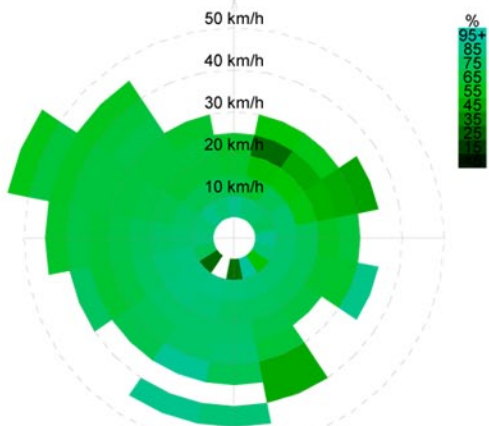
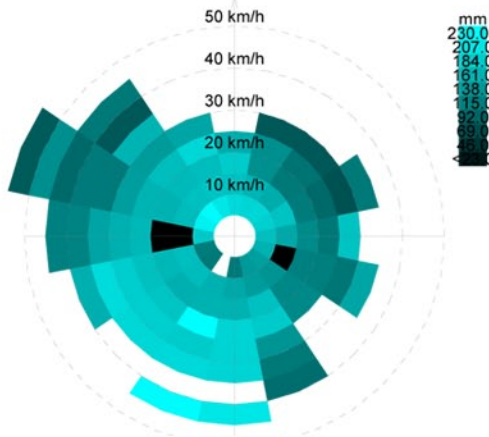
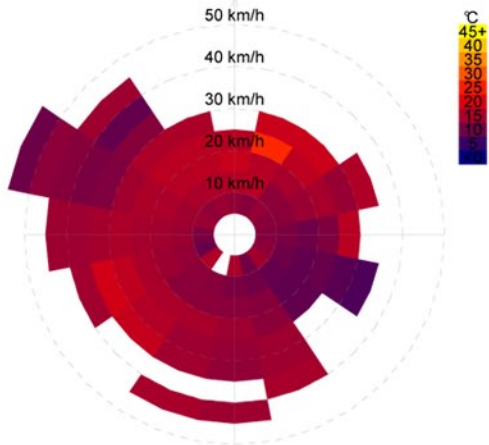


# Wind Analysis



## Prevailing Winds

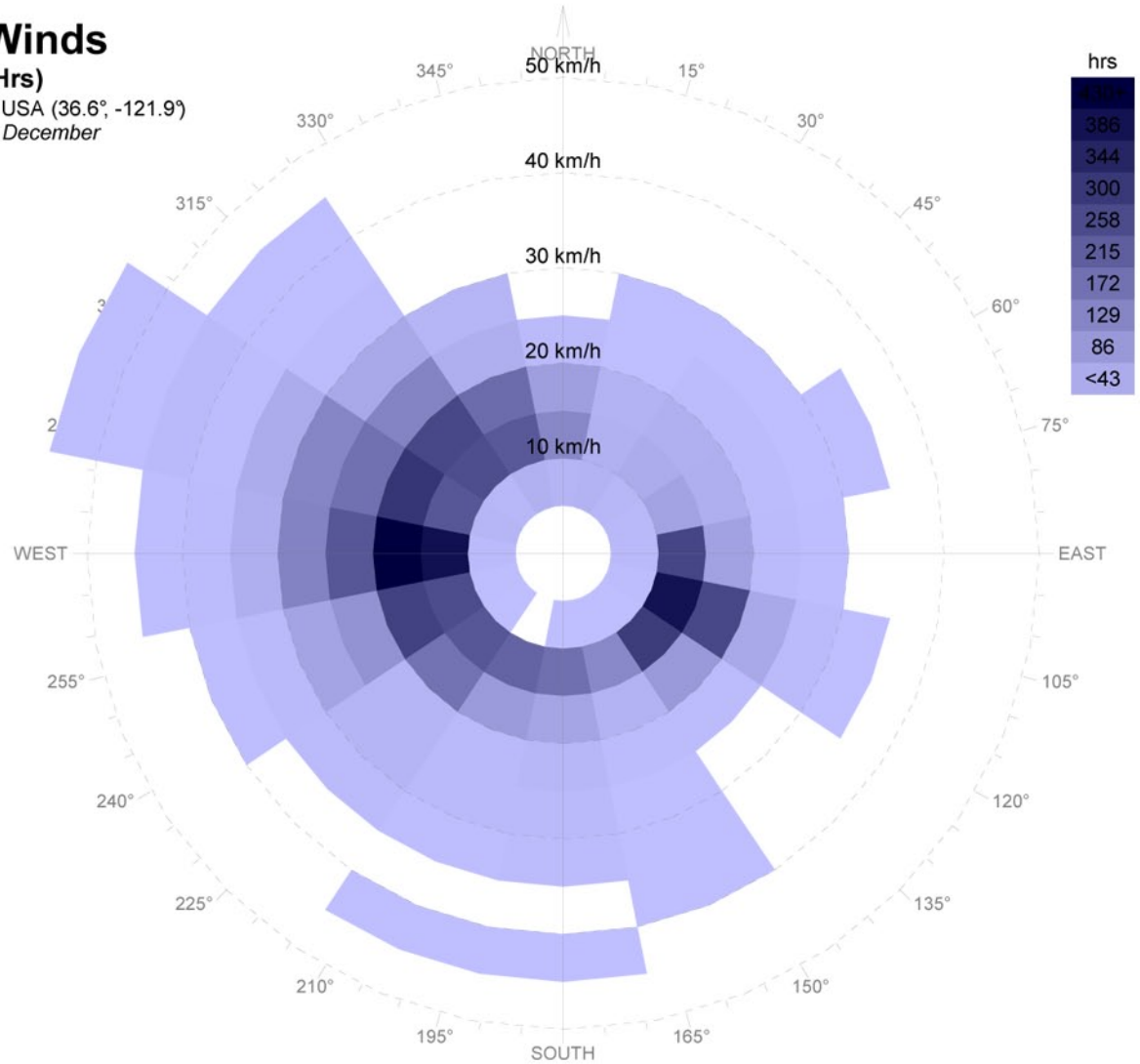
### Wind Frequency (Hrs)

Location: Monterey Naf, USA (36.6°, -121.9°)

Date: 1st January - 31st December

Time: 00:00 - 24:00

© Weather Tool



**Wind Analysis:** The graphs above were calculated with the climate analysis software Ecotect and represent the average yearly wind speeds and directions for the Winter, Summer, Spring, and Fall in Monterey California. Generally, a cool prevailing wind is present from the North / North West direction with a speed of 10 to 30 km/hr. or 6 to 18 mph.