

MPWSP Pipeline RFP/Contract Anticipated Schedule

Presented to: MPWSP Governance Committee

Presented by: Ian Crooks, CAW

Date: March 25, 2015

MPWSP Pipeline Contract Anticipated Schedule

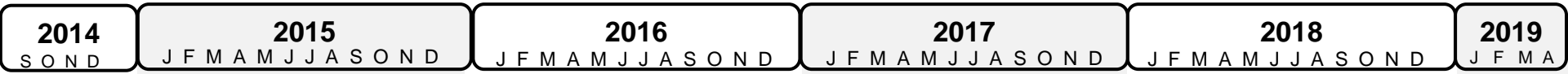


	Pipeline Contract Process	GC Activity	GC Agenda Item	GC Meeting Dates
March	Prepare RFQ & RFP Package			
April		Submit Package to GC		
	DRAFT EIR RELEASE		Approve Package for Release & recommend preparing VE RFQ/RFP	April 27, 2015
	Release Docs to contractors			
May	Pre Bid Meetings Site Visits & Q&A's		Approve VE RFQ/RFP docs & recommended consultants	May 20, 2015
		Release VE RFQ/RFP's		
June			Discuss Pipeline & VE status	June 17, 2015
	RFQ/RFP Due			
		VE RFP Due		
July	Evaluate RFP's	Evaluate VE RFQ/RFP's		
		Submit Pipeline & VE Recommendations	Approve Pipeline & VE contractor	July 27, 2015
	NOI to Contractor			
August	VE Session & Evaluation			
		Submit VE Ideas		
	Contractor Prepare & Submit Formal VE Cost Changes		Discuss VE Ideas	August 24, 2015
September		Submit Final VE Recommendations	Approve VE Recommendations	September 16, 2015
	Prepare Final Contract w/ VE Changes			
October		Submit Final Contractor Bid w/ VE Recommendations	Approve Final Pipeline Contract Award	October 21, 2015
	FINAL EIR RELEASE			
	Issue Notice of Award			
November				November 18, 2015

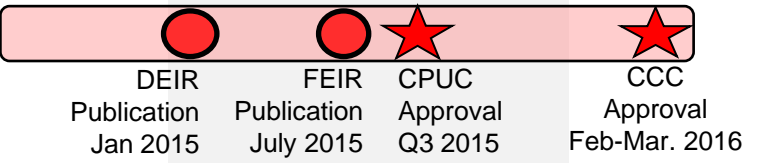
Note: The schedule is based on the information and assumptions available at time of update and is accurate to +/- 6 months.

MPWSP Anticipated Schedule

This outdated chart was submitted in error. See next page for updated chart submitted on March 26, 2015.

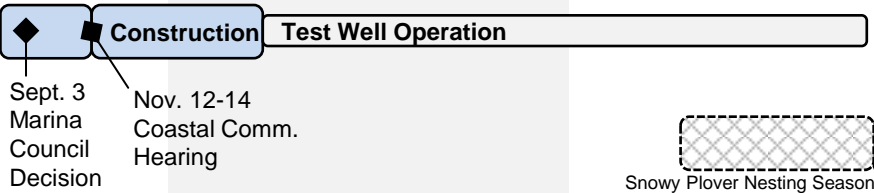


EIR



SWRCB Current CDO Deadline Dec. 31, 2016

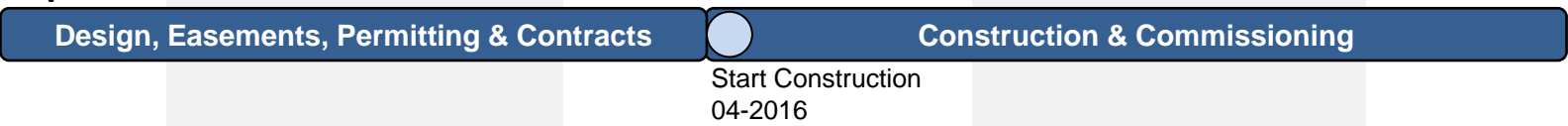
Test Well



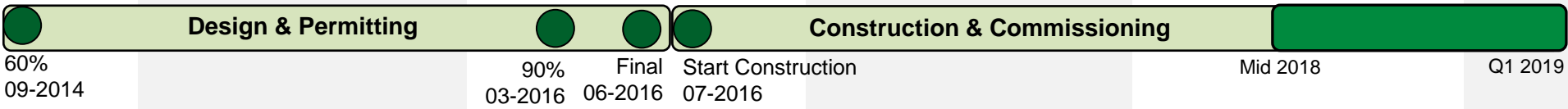
Production Wells



Pipelines / Tanks / BPS



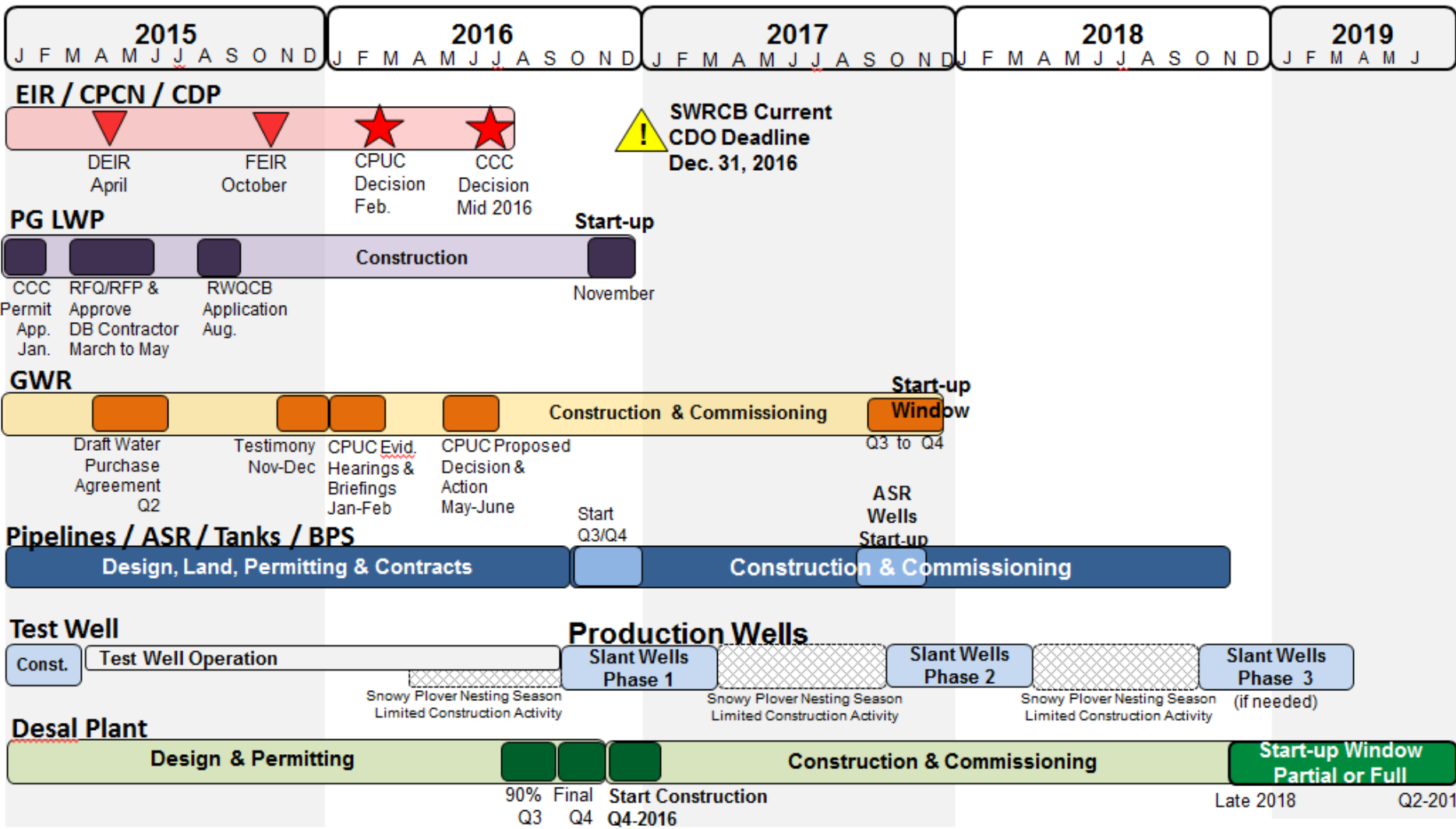
Desal Plant



Note: The schedule is based on the information and assumptions available at time of update and is accurate to +/-6 months.

Updated September 16, 2014

MPWSP Anticipated Schedule



SWRCB Current CDO Deadline Dec. 31, 2016

Snowy Plover Nesting Season Limited Construction Activity

Note: The schedule is based on the information and assumptions available at time of update and is accurate to +/-6 months.