

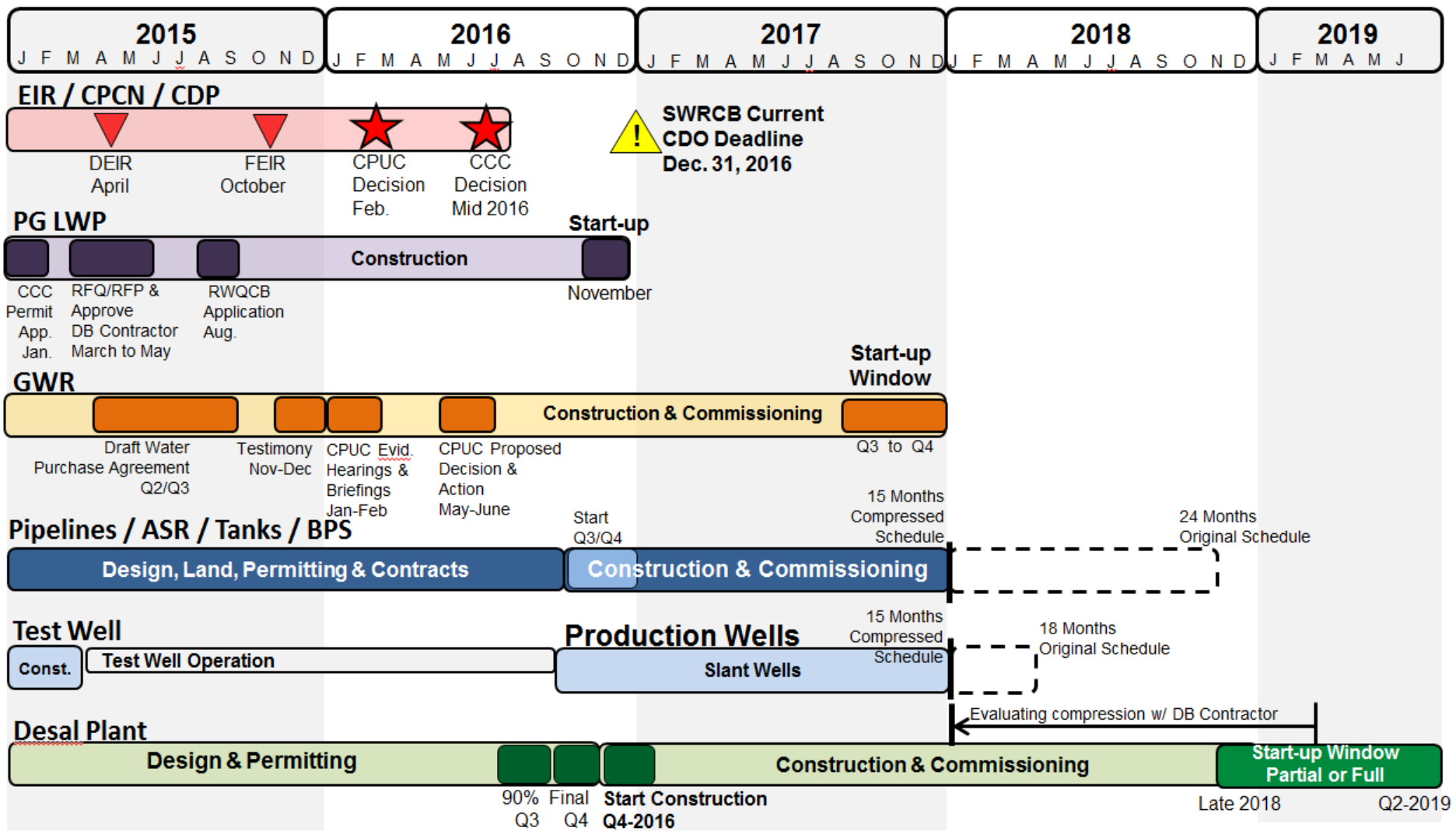
# MPWSP Schedule and Test Well Update

Presented to: MPWSP Governance Committee

Presented by: Cal Am

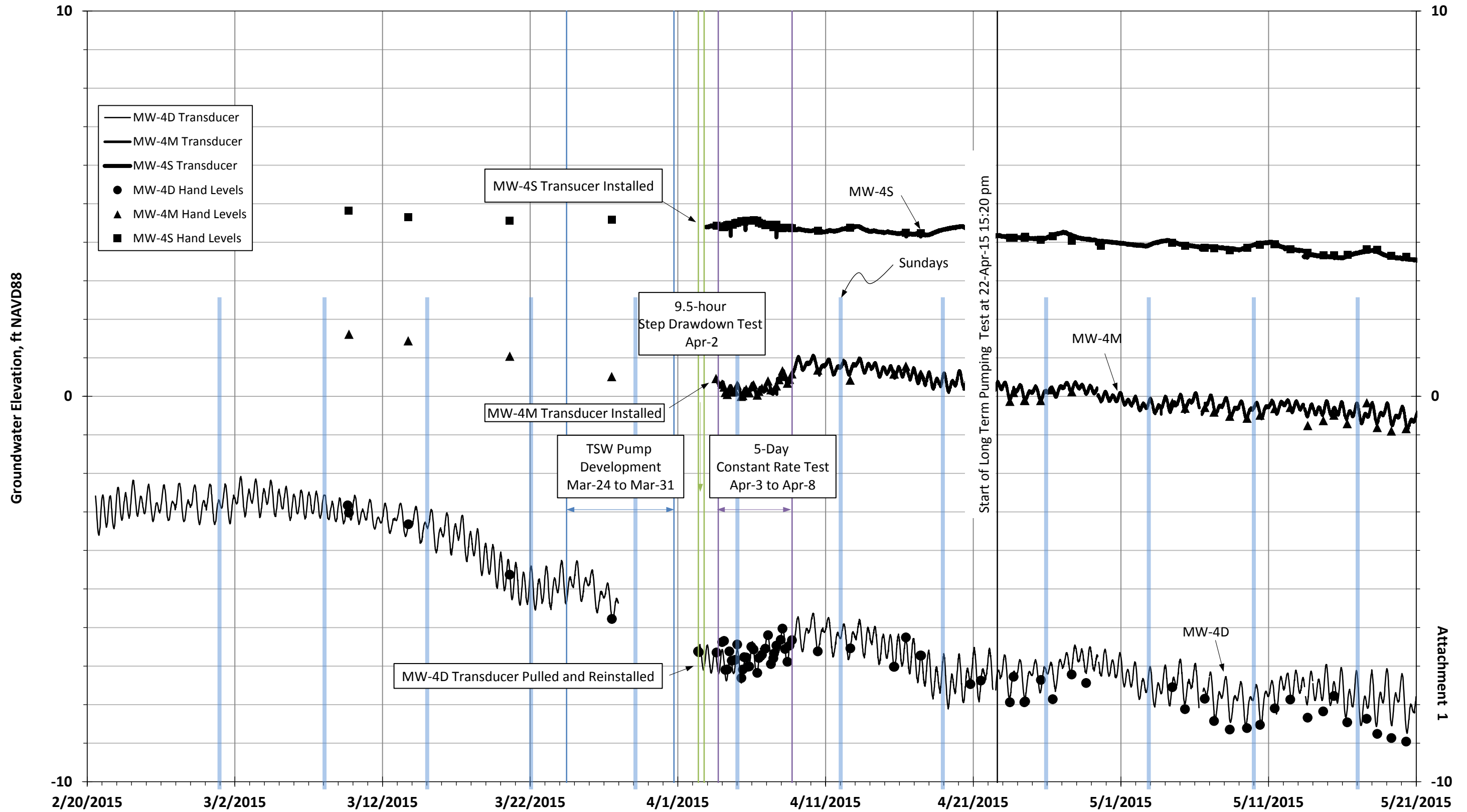
Date: June 24, 2015

# MPWSP Anticipated Schedule



Note: The schedule is based on the information and assumptions available at time of update and is accurate to +/-6 months.

### Groundwater Elevation in MPWSP MW-4



Attachment 1

### Groundwater Elevation in MPWSP MW-3

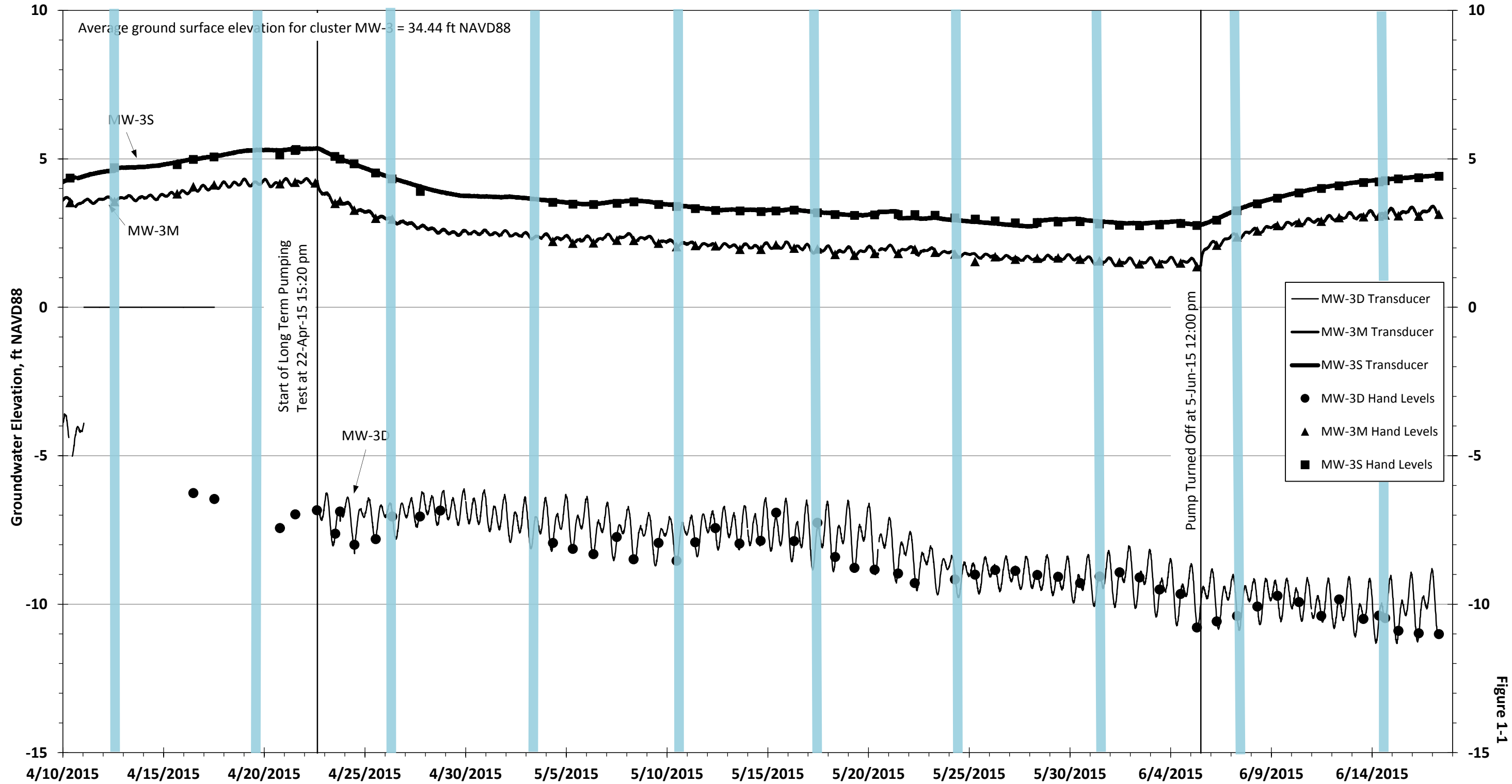


Figure 1-1

### Groundwater Elevation in MPWSP MW-4

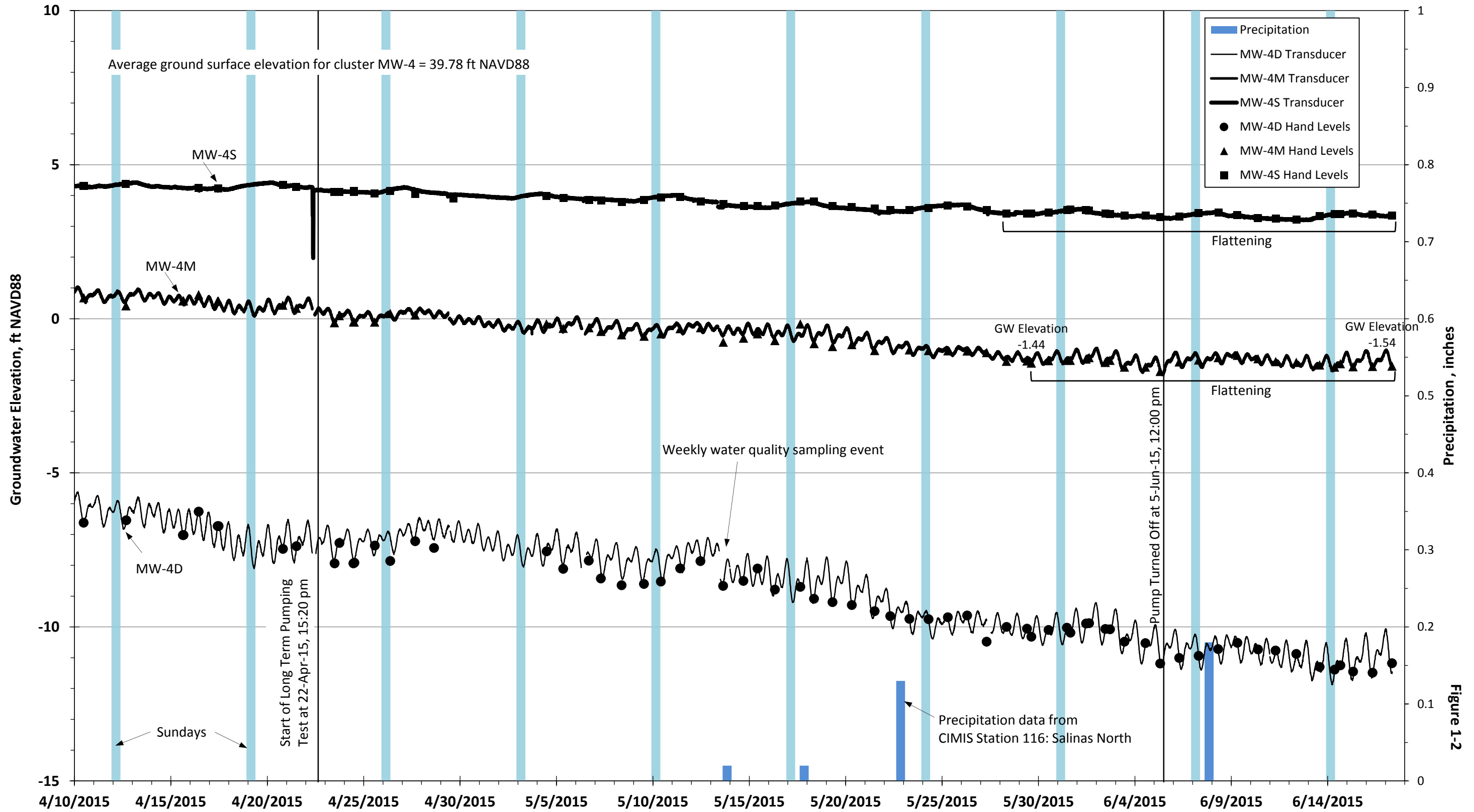


Figure 1-2

### Groundwater Elevation in MPWSP MW-5S

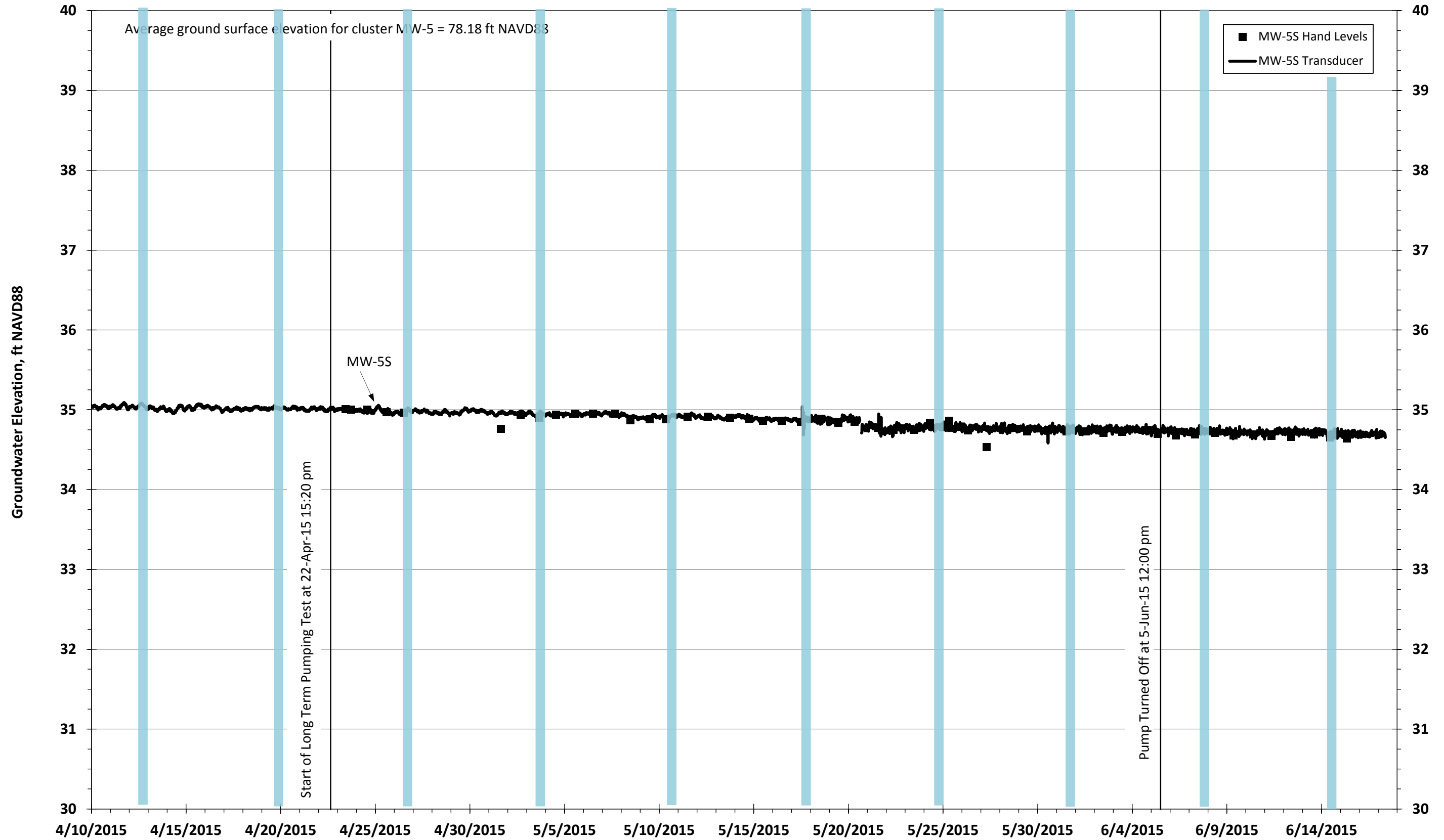


Figure 1-3a

### Groundwater Elevation in MPWSP MW-5M and MW-5D

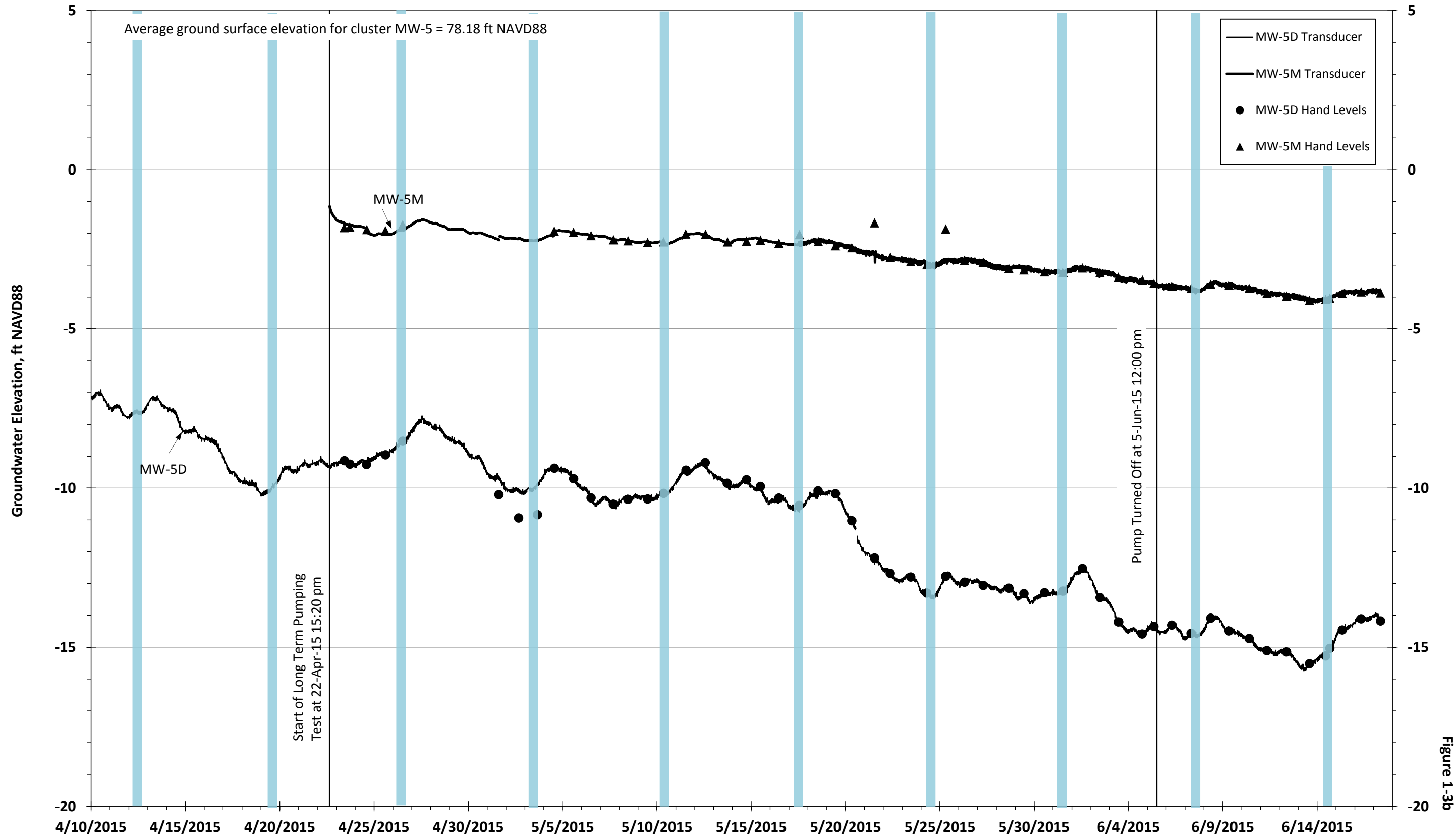


Figure 1-3b

### Water Level Profiles

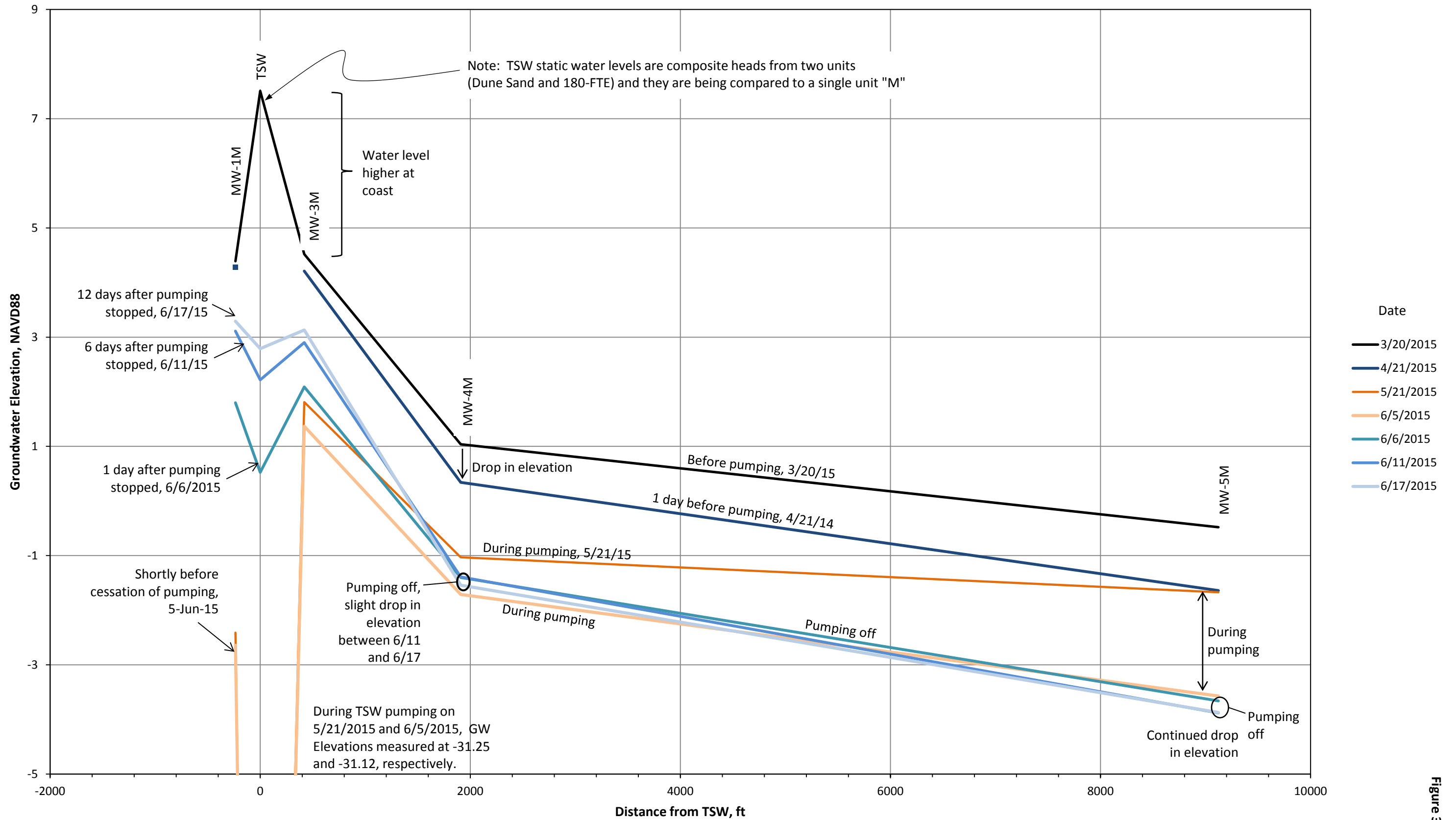


Figure 3



# MPWSP Desalination Conveyance Facilities RFP and Source Slant Wells RFP Schedule

Presented to: MPWSP Governance Committee

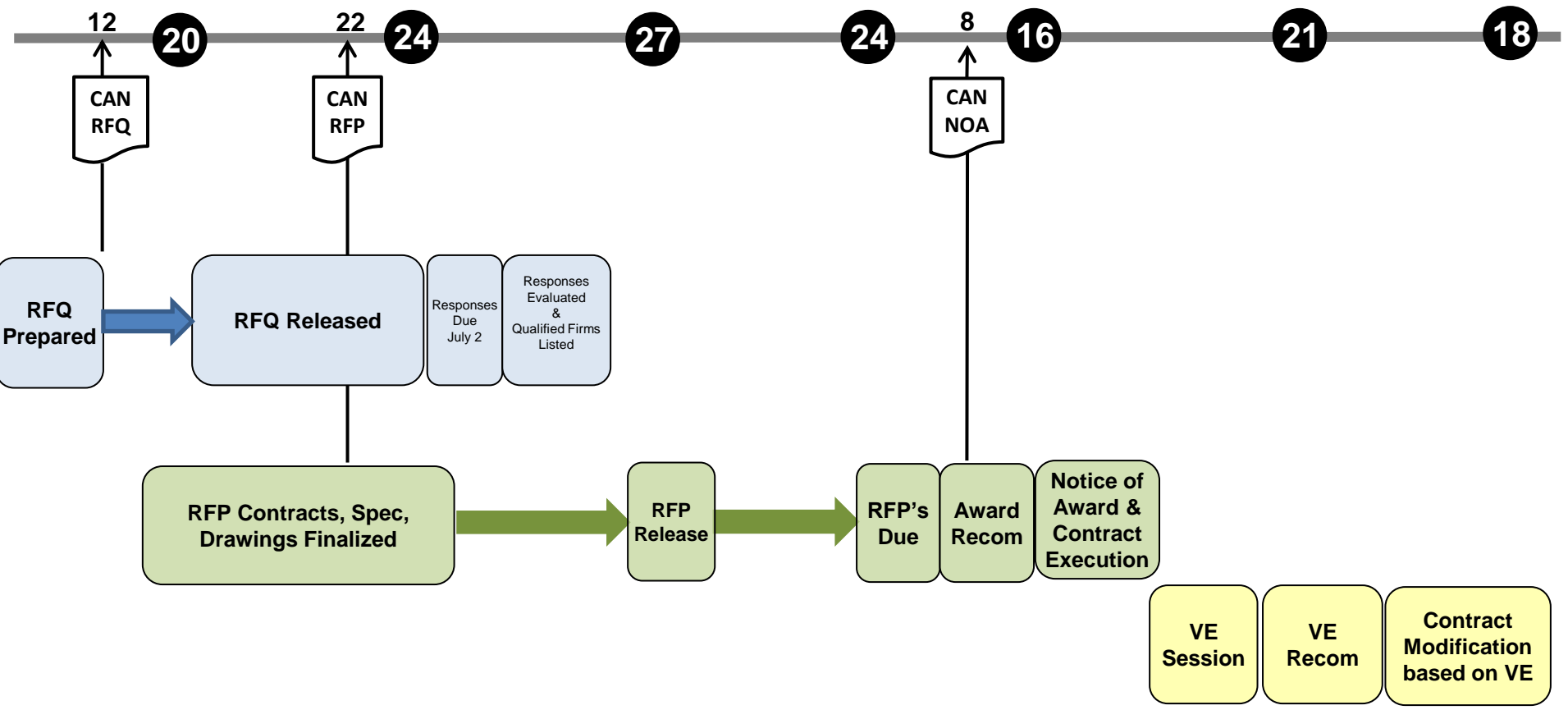
Presented by: Cal Am

Date: June 24, 2015

# MPWSP Conveyance Facilities Procurement Schedule

May	June	July	Aug	Sept	Oct	Nov
-----	------	------	-----	------	-----	-----

## # GC Meeting Dates



## RFP Provisions

- Diversity Provision (WMDVBE)
- Local Hiring
- Prevailing Wage

## RFP Components

Component	Length (LF)	Diameter
<u>Feedwater - Cemex</u>	11,527'	42"
<u>Cemex Return Line</u>	11,527'	8"
Brine Discharge	3,762'	36"
Salinas Valley Return to PCA	5,679'	12"
Transfer Pipeline	49,517'	36"
ASR Extension	5,100'	36"
(3) ASR Extension	4,300' (ea)	16"
Monterey Pipeline	34,199'	36"

Component	Dimensions	Diameter
Terminal Reservoir - 2 tanks	3 MG (ea)	130'
Inlet/Outlet Pipelines	1,711' (ea)	16"
Drain Pipeline	879'	30"

Component	Capacity (GPM)
Monterey Pump Station	6,300
Valley Greens Pump Station	2,500

# MPWSP Source Water Wells Procurement Schedule

May	June	July	Aug	Sept	Oct	Nov
-----	------	------	-----	------	-----	-----

# GC Meeting Dates

