

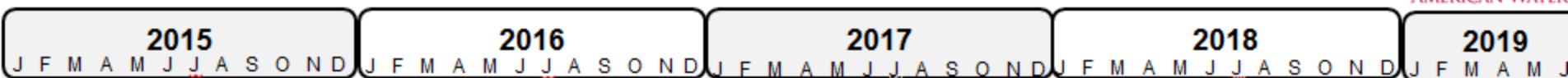


MPWSP Overview Schedule, Test Slant Well & General Update

Presented to: MPWSP Governance Committee

Date: December 16, 2015

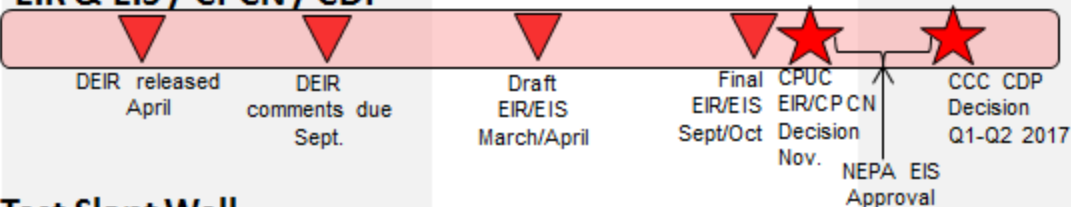
MPWSP Anticipated Schedule



EIR & EIS / CPCN / CDP



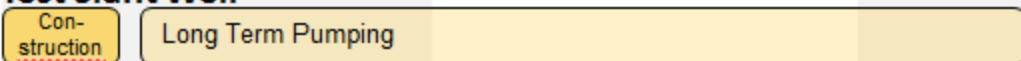
SWRCB Current CDO Deadline
Dec. 31, 2016



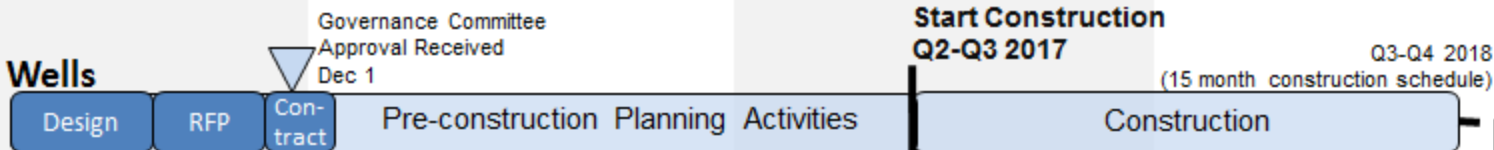
On July 9, 2015, CPUC indicated schedule changes would be issued in a subsequent ruling.

This schedule is based on our best estimate as of 12/11/2015.

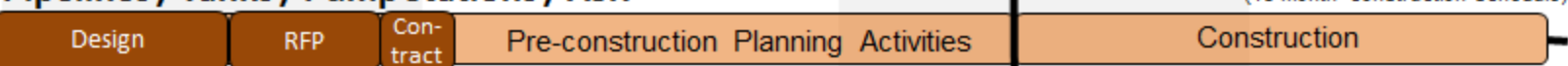
Test Slant Well



Source Wells



Pipelines / Tanks / Pump Stations / ASR

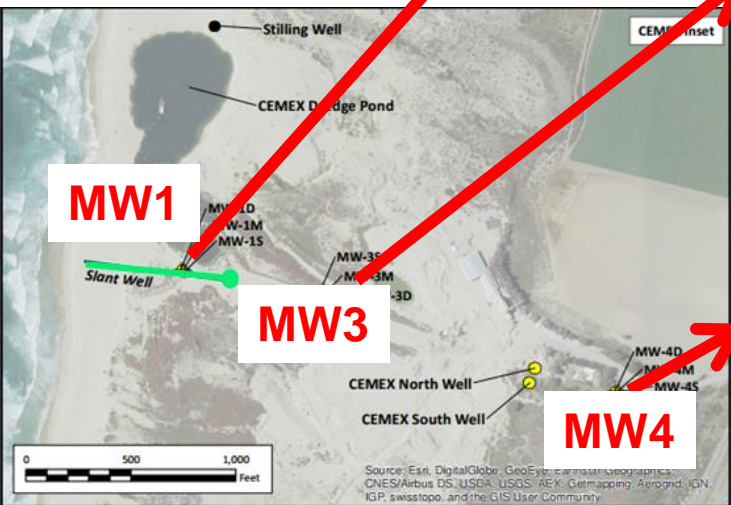
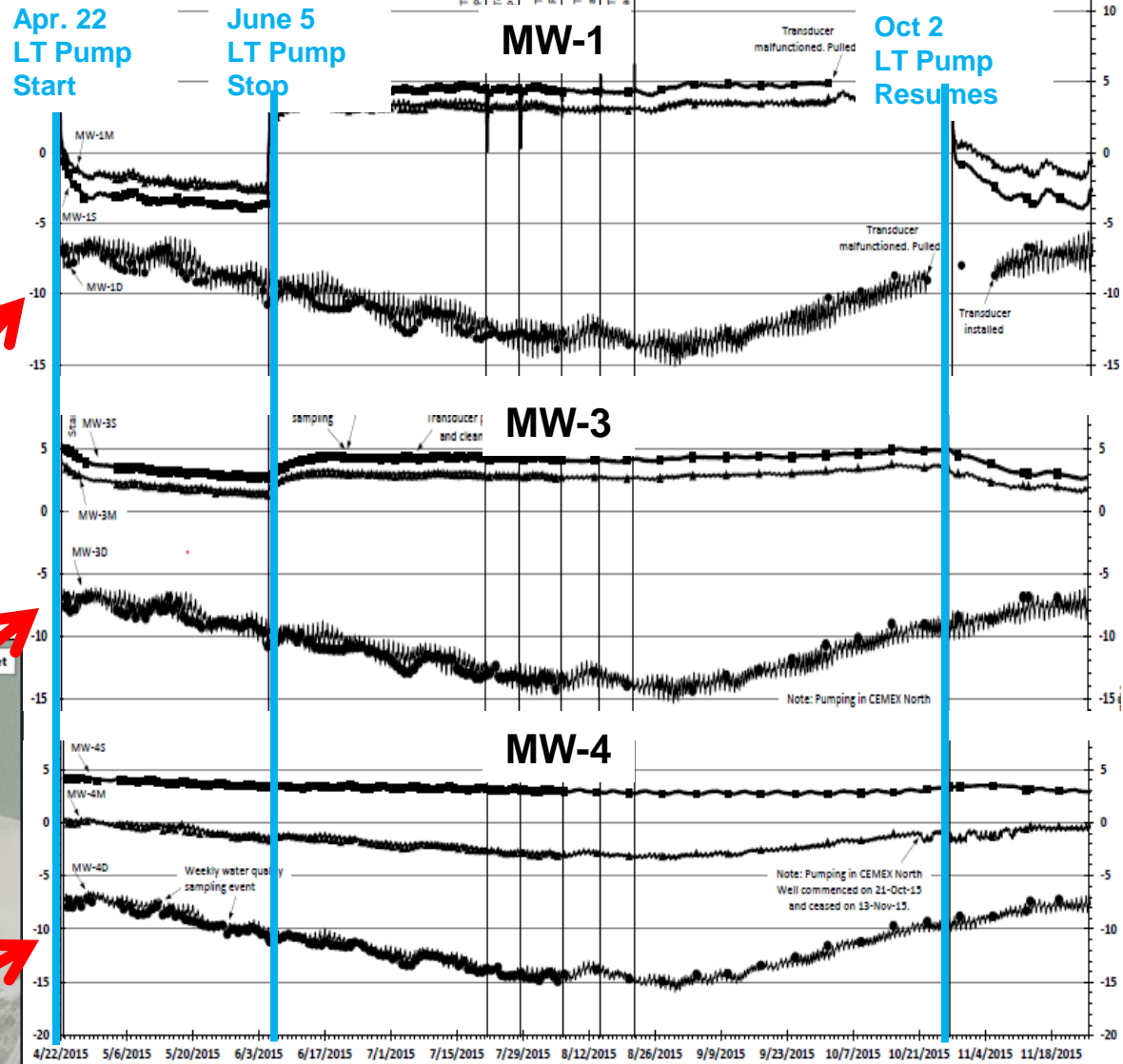


Desal Plant

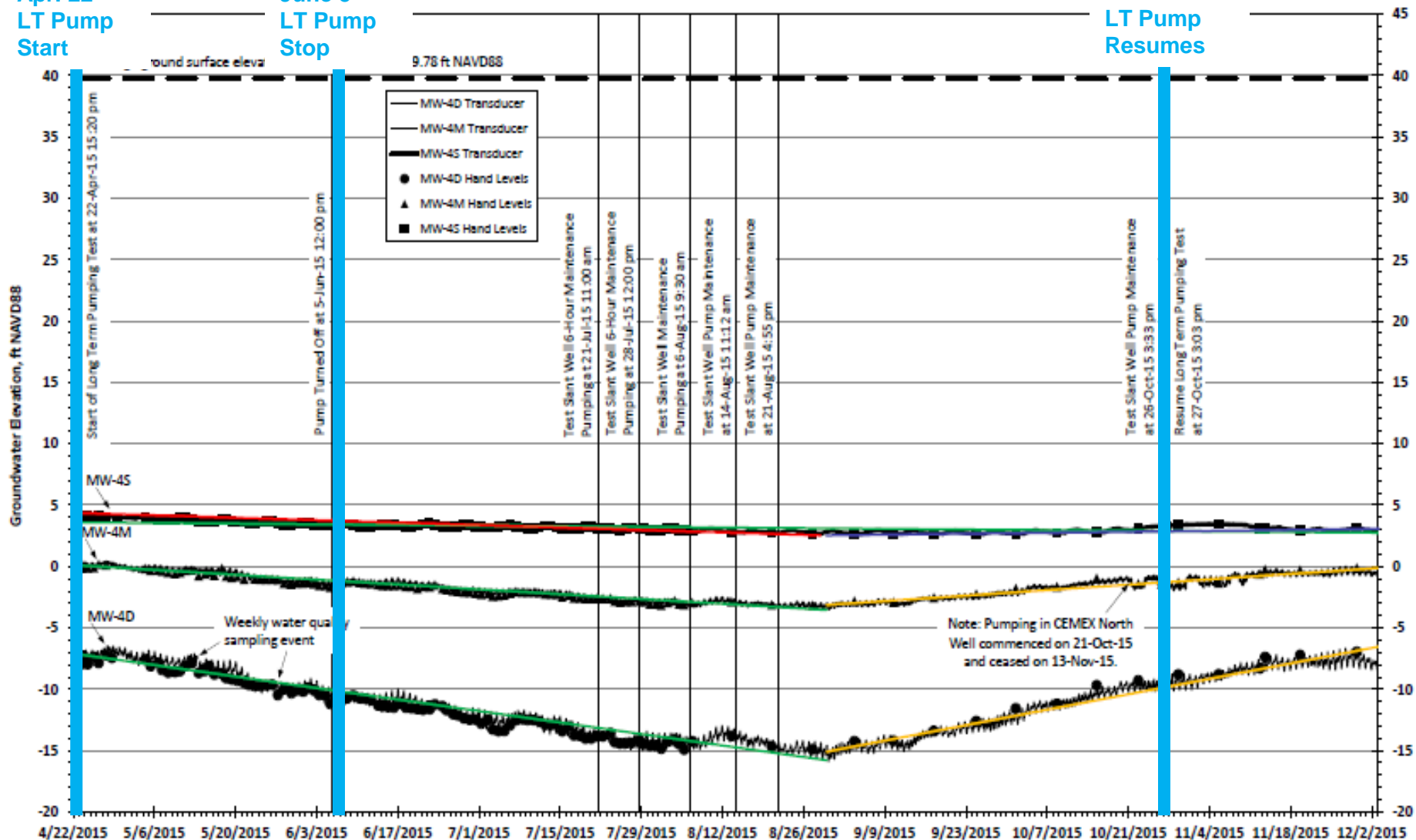


On-site Monitoring Well Levels

Graphs from Monitoring Well Report #31
(data April 22 thru Nov. 25, 2015)



MONITORING WELL #4

Apr. 22
LT Pump
StartJune 5
LT Pump
StopOct 2
LT Pump
Resumes

TEST WELL SPECIFIC CONDUCTIVITY

