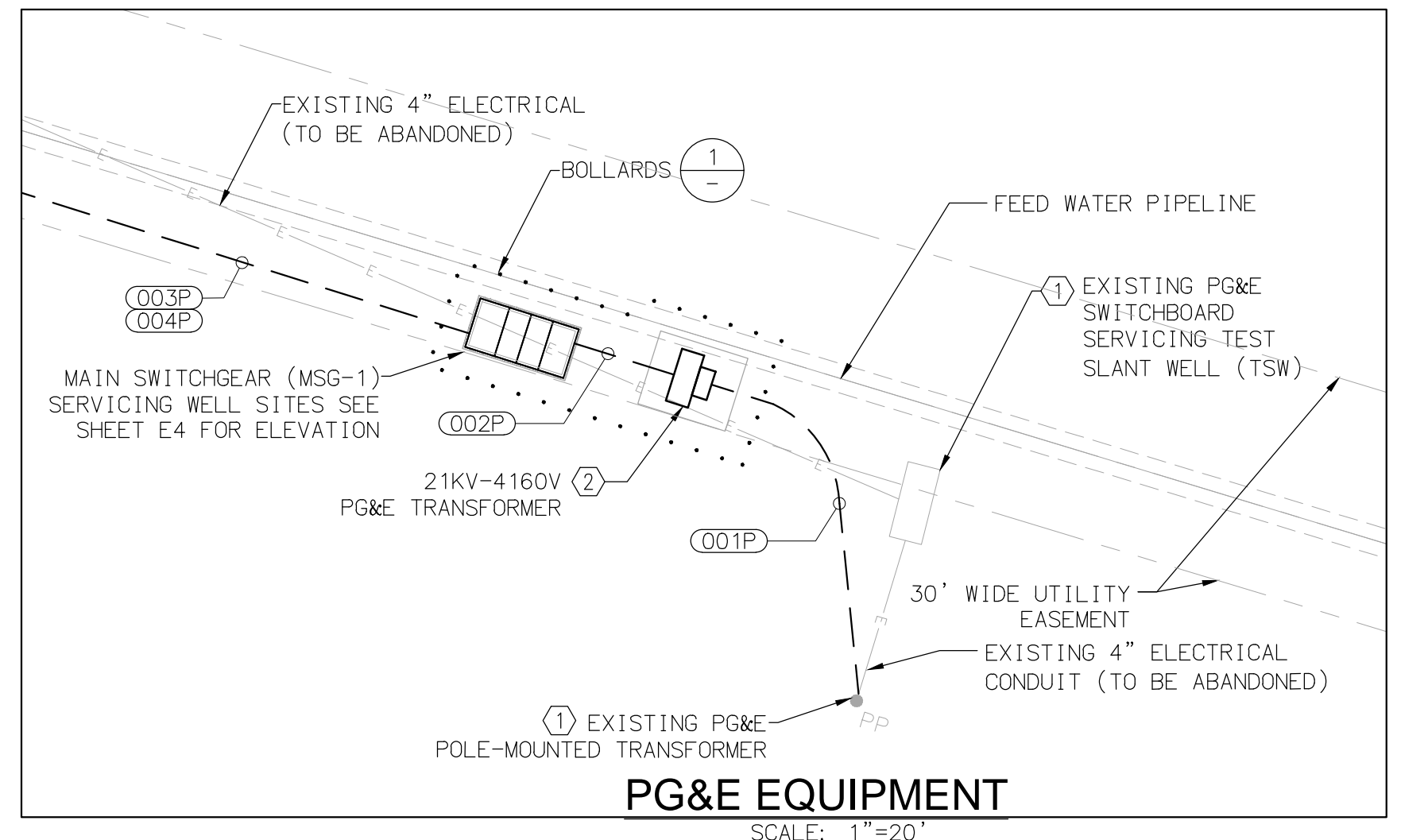
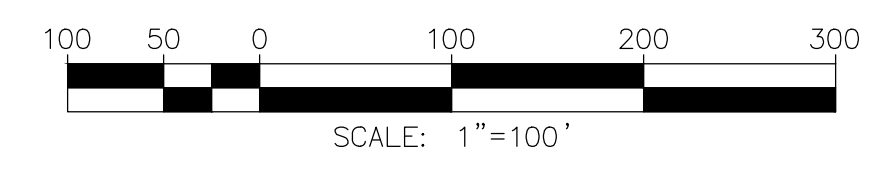


NOTES:
 CONTRACTOR TO OBTAIN APPROVAL OF BOLLARD PLACEMENT FROM UTILITY PRIOR TO INSTALLATION.

REMOVABLE GUARD POST DETAIL 1



- SHEET NOTES:**
- EXISTING PG&E SWITCHBOARD AND TRANSFORMER FOR TSW SHALL BE REMOVED PRIOR TO THE PROPOSED MAIN SWITCHGEAR (MSG-1) BEING ENERGIZED.
 - CONTRACTOR SHALL INSTALL CONCRETE PAD FOR PG&E TRANSFORMER AND PRIMARY/SECONDARY CONDUITS PER THE APPROVED PG&E SERVICE PLAN (SEE GENERAL NOTE #2 ON E2).
 - CONTRACTOR SHALL INSTALL CUSTOMER-OWNED 1500KVA 4160V-480/277V WYE TRANSFORMER ON 10' X 12' PRECAST CONCRETE SLAB BOX INCLUDING GROUND LOOP. TRANSFORMER SHALL BE EATON OR APPROVED EQUAL (STAINLESS STEEL ENCLOSURE).
 - CONTRACTOR SHALL INSTALL CUSTOMER-OWNED 1000KVA 4160V-480/277V WYE TRANSFORMER ON 10' X 12' PRECAST CONCRETE SLAB BOX INCLUDING GROUND LOOP. TRANSFORMER SHALL BE EATON OR APPROVED EQUAL (STAINLESS STEEL ENCLOSURE).



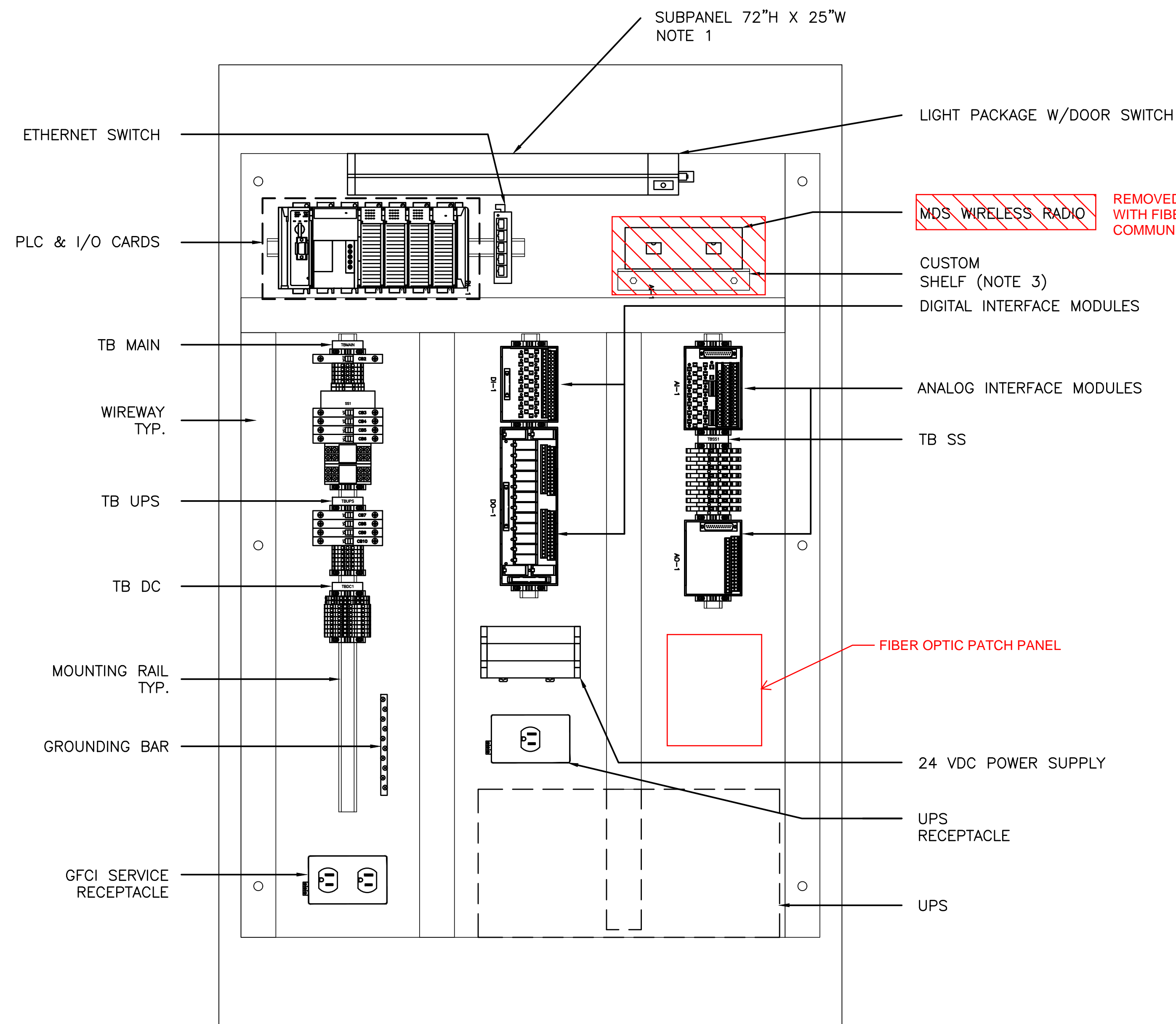
OVERALL POWER PLAN

Michael Baker INTERNATIONAL



REVISIONS	MONTEREY PENINSULA WATER SUPPLY PROJECT SLANT WELL INTAKE SYSTEM OVERALL POWER PLAN	
	CALIFORNIA AMERICAN WATER COMPANY MONTEREY	
	MICHAEL BAKER INTERNATIONAL 9755 CLAIREMONT MESA BLVD SAN DIEGO, CA 92124 858-614-5000	
	DRAWN BY PROJECT ENGR MAKROM SHATILA DATE 11/01/2018 APPROVED PROJECT MPWSP	USE DIMENSIONS ONLY SCALE 1"=100'
	USE APPROVED DRAWINGS ONLY FOR CONSTRUCTION PURPOSES	36 E7

H:\PDATA\148903\CADD\ELECT\DLV\148903 - E-007.DWG TEE, ANDREW 4/13/2019 10:49 AM

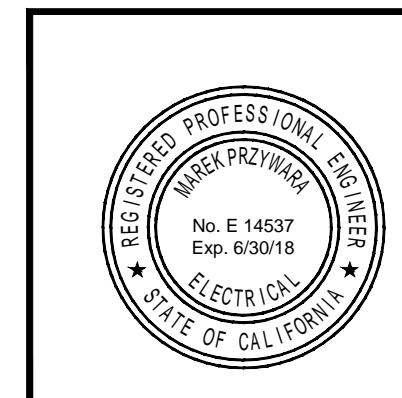



NOTES:

1. ENCLOSURE SUBPANEL. CUSTOM SIZE TO MOUNT IN CONTROL PANEL SECTION IN SWITCHBOARD SUPPLIED AND INSTALLED BY CONTRACTOR. SEE SHEET E5 AND E6 FOR ADDITIONAL PANEL LAYOUT INFORMATION.
2. CONTRACTOR SHALL FURNISH AND INSTALL NEW INTRUSION SWITCH FOR CABINET INTRUSION. FURNISH AND INSTALL BRACKET FROM BACKPANEL TO DOOR LOCATION. MOUNT SWITCH ON END OF BRACKET. DO NOT MOUNT SWITCH TO CABINET.
3. CONTRACTOR SHALL FURNISH AND INSTALL CUSTOM SHELF FOR RADIO(S) AS REQUIRED.
4. RADIO CONTRACTOR SHALL INSTALL POLYPHASE LIGHTING ARRESTORS.

CONTROL PANEL BACKPAN
NOT TO SCALE

**Michael Baker
INTERNATIONAL**



REVISIONS	MONTEREY PENINSULA WATER SUPPLY PROJECT SLANT WELL INTAKE SYSTEM CONTROL PANEL ELEVATION	
	CALIFORNIA AMERICAN WATER COMPANY MONTEREY	
	MICHAEL BAKER INTERNATIONAL 9755 CLAIREMONT MESA BLVD SAN DIEGO, CA 92124 858-614-5000	
		
DRAWN BY: PROJECT ENG'R MAKROM SHATILA DATE 11/01/2018 APPROVED: PROJECT MPWSP		USE DIMENSIONS ONLY SCALE
USE APPROVED DRAWINGS ONLY FOR CONSTRUCTION PURPOSES		48 E19

BID SET – NOT FOR CONSTRUCTION