



## **MPWSP Governance Committee**

### **Topic: Potrero Rd Test Well Permitting Contingency**

**April 16, 2014**

**Ian Crooks**

**California American Water**

## Potrero Road Site – Benefits & Challenges

### + Environmental

- Disturbed area - Parking lot and roadway
- Close to Ocean (500') and outside coastal erosion impacts
- Behind dunes – mitigates construction sight and sound from habitat
- Significant buffer from Snowy Plover, potentially allowing year-round

### + Hydrogeological

- Dune Sand equivalent aquifer with defined aquitard from 140ft – 185ft
- Ocean Water present above aquitard – 34,000 mg/l
- Good transmissivity

— More Pipeline (21,000') & Cost (\$12m to \$16m) than Cemex option

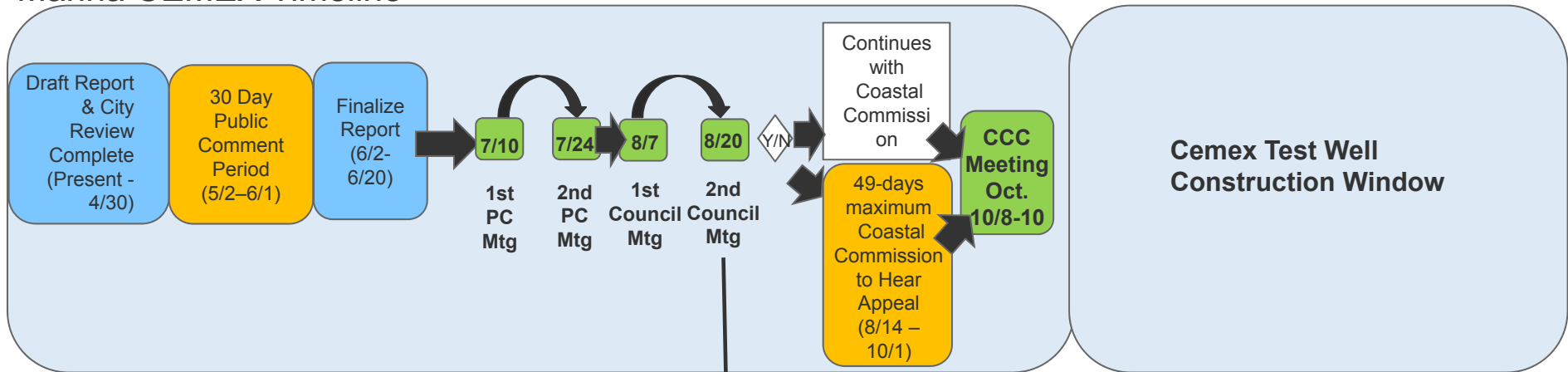
— Construction complexity – river, bridge, highway crossings may lead to higher cost

# Test Well CEQA/NEPA - Anticipated Timeline

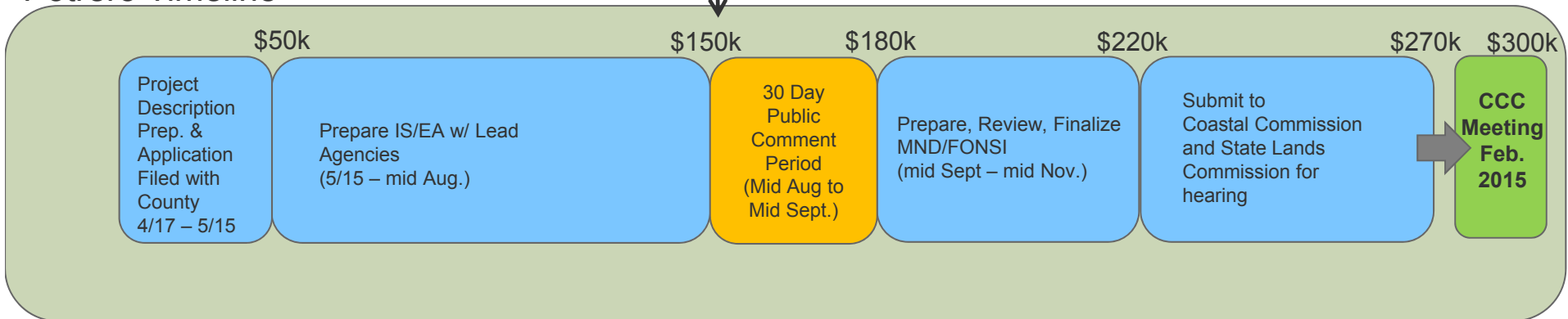
2015



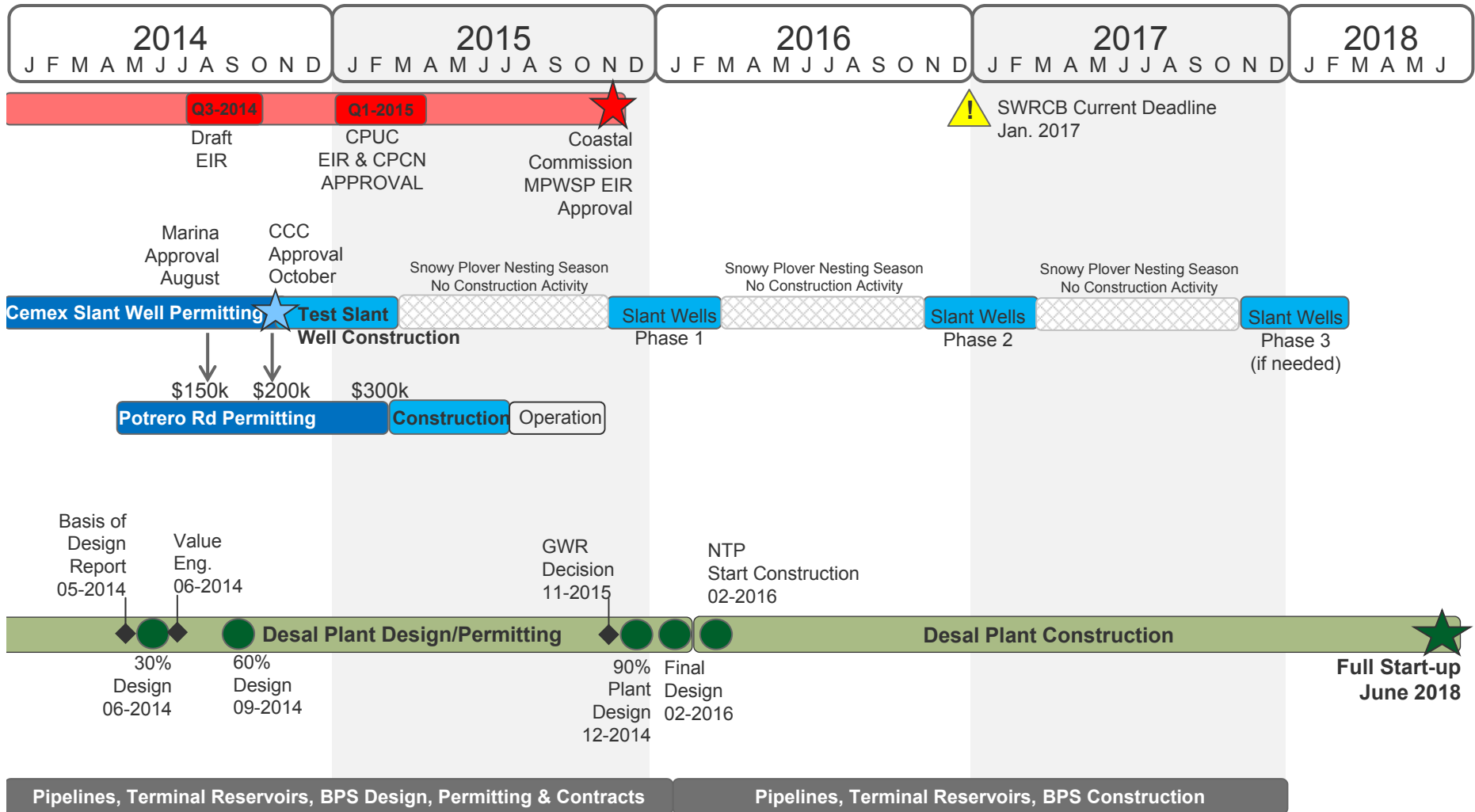
## Marina CEMEX Timeline



## Potrero Timeline



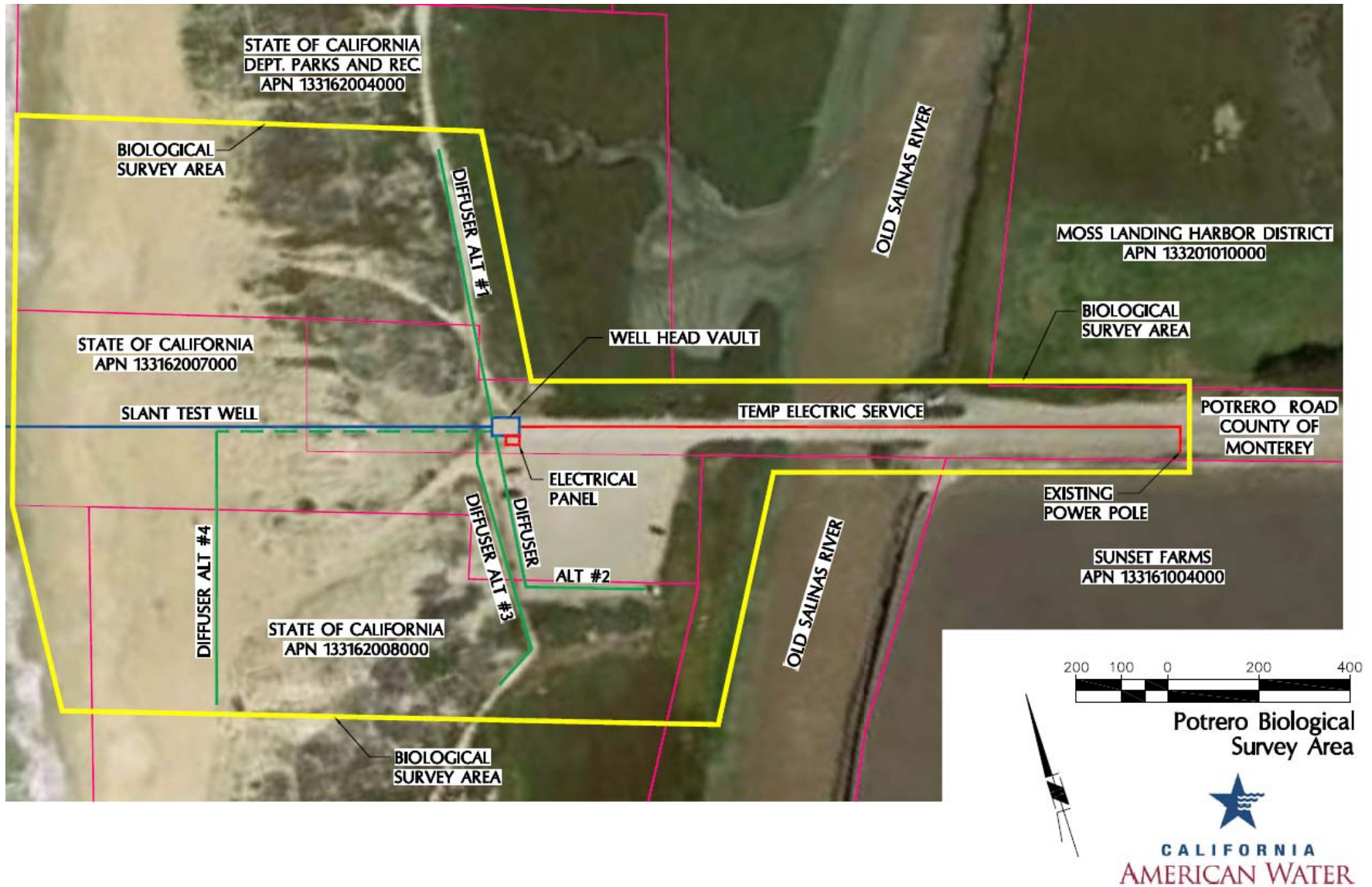
# Monterey Peninsula Water Supply Project Anticipated Schedule



Note: The schedule is based on the information and assumptions available at time of update and is accurate to +/- 6 months. Updated April 14, 2014

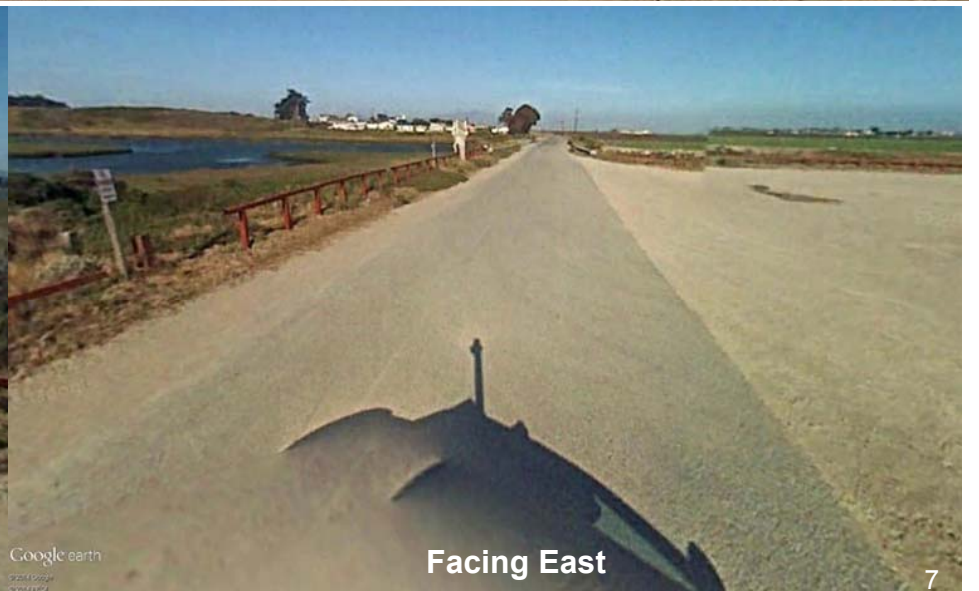
# Appendix

# Potrero Rd - Test Well Preliminary Layout





## Potrero Rd – Photos



## Potrero Rd Section – Borehole Preliminary Findings

