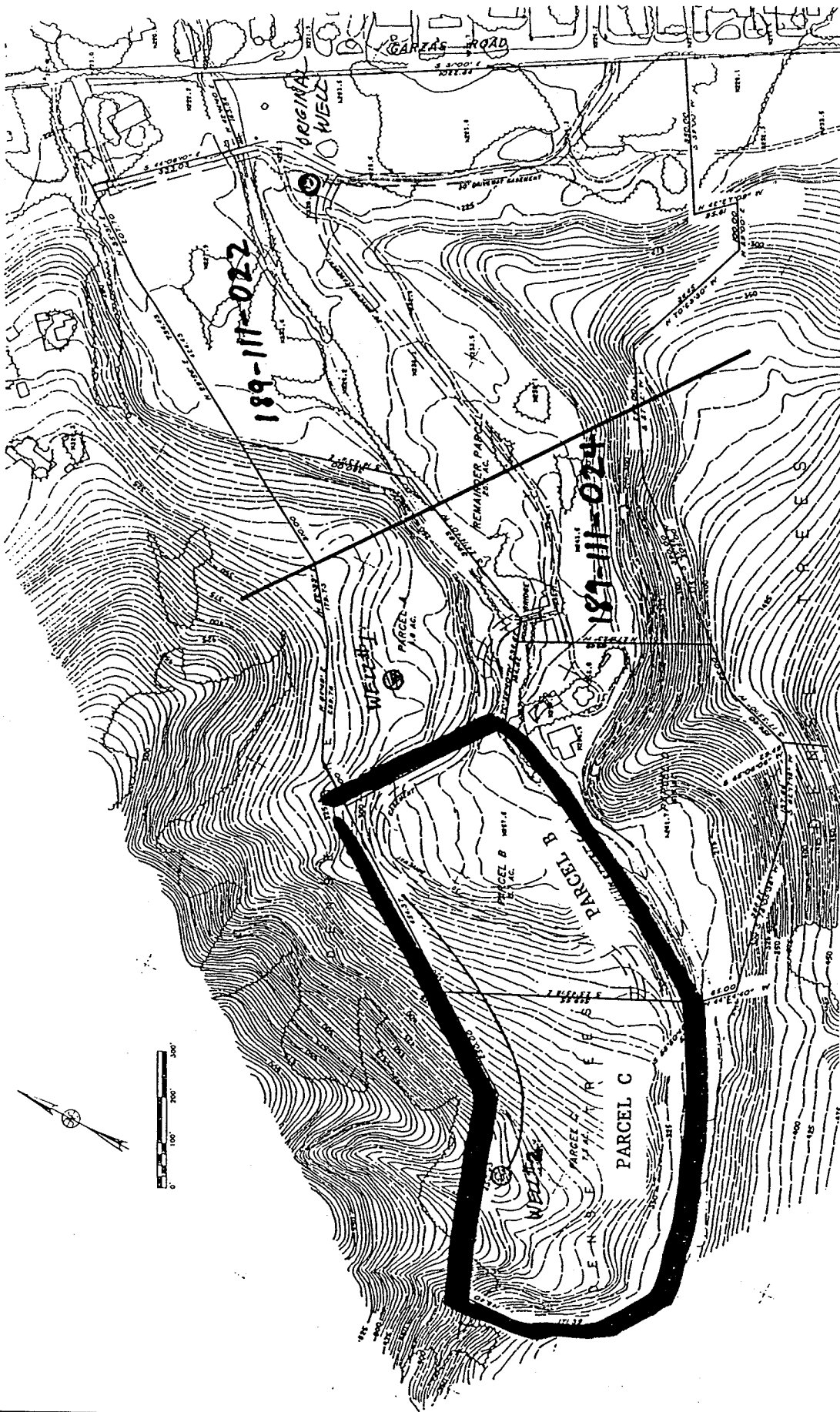


Attachment 1



HELL ENGINEERS CORP.
 DEVELOPMENT STUDY
 REVISION OF PARCEL I
 VEEDER FAMILY PARCEL
 IN PARCEL 6, RANCHO LOS LAURELES
 RANCHO LOS LAURELES
 CARMEL VALLEY, MONTEREY COUNTY, CALIFORNIA
 FEBRUARY 2001
 W.G. 5638
 NO SCALE

FIG. #1