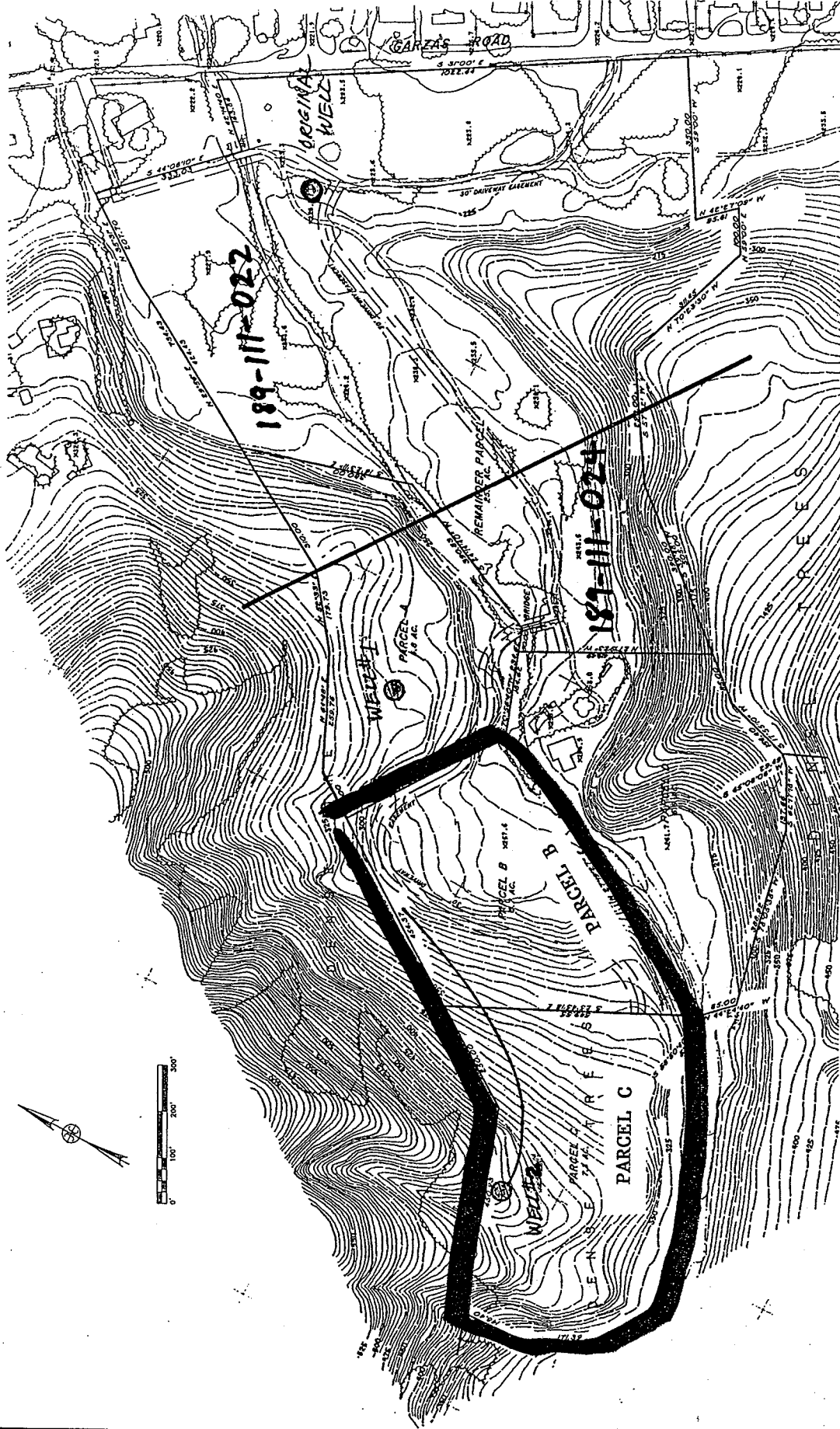


EXHIBIT 4-B



REILLY ENGINEERS CORP.  CARMEL, CALIFORNIA
DEVELOPMENT STUDY
 REVISION OF PARCEL I
 VEEDER FAMILY PARCEL
 IN PARCEL 6, RANCHO LOS LAURELES
 RANCHO LOS LAURELES
 CARMEL VALLEY, MONTEREY COUNTY, CALIFORNIA
 FEBRUARY 2001 W.O. 5636 NO SCALE

FIG. #1