



January 2007

MPWMD Strategic Issues Update





Overview

- MPWMD Mission and Geographic Area
- Current Strategic Vision
- 2005-6 Key Results
- Three-year Strategic Goals
- 2006-07 Strategic Objectives
- Q & A



Mission Statement

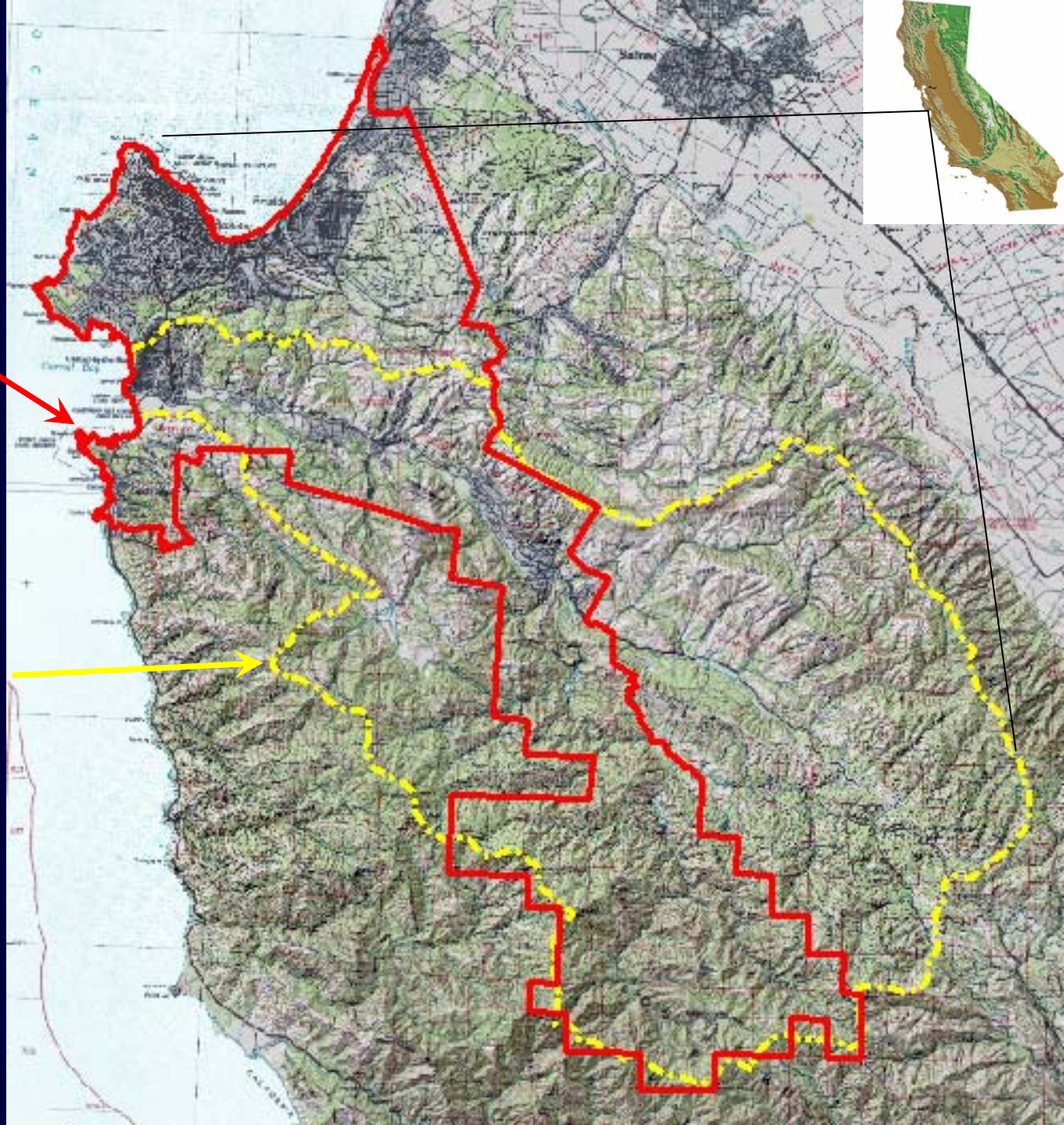
The mission of the Monterey Peninsula Water Management District is to manage, augment, and protect water resources for the benefit of the community and the environment.

Monterey Peninsula
Water Management
District

**MPWMD
Boundary**



**Carmel River
Watershed
Boundary**
(255 square miles)





Strategic Vision

The MPWMD:

- will strive to serve as a Catalyst in collaboration with Public and Private entities for environmentally responsible solutions that result in a reliable and legal water supply; and



Strategic Vision (contd.)

- shall be a fiscally responsible, professional, and publicly respected leader in managing water resources.



2005-6 Key Results

- Board approved first fully-balanced budget in 13 years--MPWMD no longer deficit spending
- Board adopted Ordinance No. 125--first comprehensive update of MPWMD Water Use Permitting & Water Credit Rules; adds definitions, clarifies process and standards, eliminates vagaries



2005-6 Key Results (contd.)

- MPWMD website upgraded for improved customer service; Rules and Regulations added
- California American Water (Cal-Am) and MPWMD signed Aquifer Storage and Recovery Project joint cooperation agreement
- Second annual Community Open House held to inform and educate public



2005-6 Key Results (contd.)

- MPWMD awarded \$500,000 State Prop. 50 IRWM Planning grant--funds Monterey & Pacific Grove stormwater discharge analysis; positions MPWMD and other Peninsula agencies to compete for millions in Props. 50, 84 & 1E water project grants



Three-year Strategic Goals (thru 2009)

- Establish respectful and effective relationships among the MPWMD, Cal-Am, Jurisdictions and the Watermaster
- Determine long-term water supply solution(s), including a quantity target



Three-year Strategic Goals (contd.)

- Build and complete Aquifer Storage and Recovery Phase 1 Project and complete Phase 2 Planning
- Enhance revenue from external sources
- Enhance the protection of water resources of the Carmel River for the benefit of the environment



2006-07 Strategic Objectives

Status of progress on key objectives of interest to jurisdictions:

- Increase the Community Water Supply
 1. Complete Aquifer Storage and Recovery (ASR) Phase 1
 2. ASR Testing
 3. Long-Term Water Supply Solutions



2006-07 Strategic Objectives (contd.)

- Enhance Carmel River environmental protection activities:
 1. Lead Carmel River Lagoon/Barrier Beach inter-agency TAC in finalizing its Long-term Adaptive Management Plan (by March 15, 2007)



2006-07 Strategic Objectives (contd.)

2. Merge and refine NMFS/Cal-Am and CRWC restoration objectives into single, prioritized list for setting MPWMD spending priorities (by March 19, 2007)



Increasing the Water Supply – ASR Testing

Seaside Basin Aquifer Storage and Recovery (ASR) conjunctive use pilot project in test stage since 1996:

- “Excess” winter flows from the Carmel River diverted thru Cal-Am mains; ASR well injects/stores diverted water in Seaside Groundwater Basin



ASR Testing (contd.)

- ASR water recovered in summer; reduces Cal-Am pumping of river to stay within SWRCB's Order 95-10 regulatory limit (11,285 AFY)
- 1,863 acre-feet of excess Carmel River water injected – and recovered for testing, since 1998



ASR Testing (contd.)

Note: a) 1 acre-foot per year (AFY) of water needed to serve 3 to 4 typical Peninsula homes; b) 13,805 AF total Cal-Am production in 2006



ASR Test Site

Full scale test well constructed in 2001.



400 Hp well pump. Backflush pit at left.



ASR Testing (contd.)

- Well completed in Santa Margarita sandstone aquifer at 720 feet depth
- Well capable of injecting 1,000 gallons per minute or 4.4 acre-feet per day



Increasing the Water Supply – Phase 1 ASR Project

- Second well at Santa Margarita site will double long-term production
- First new Peninsula water supply project since 1993
- Maximum 2,400 AFY diversion; average increased yield of 920 AFY

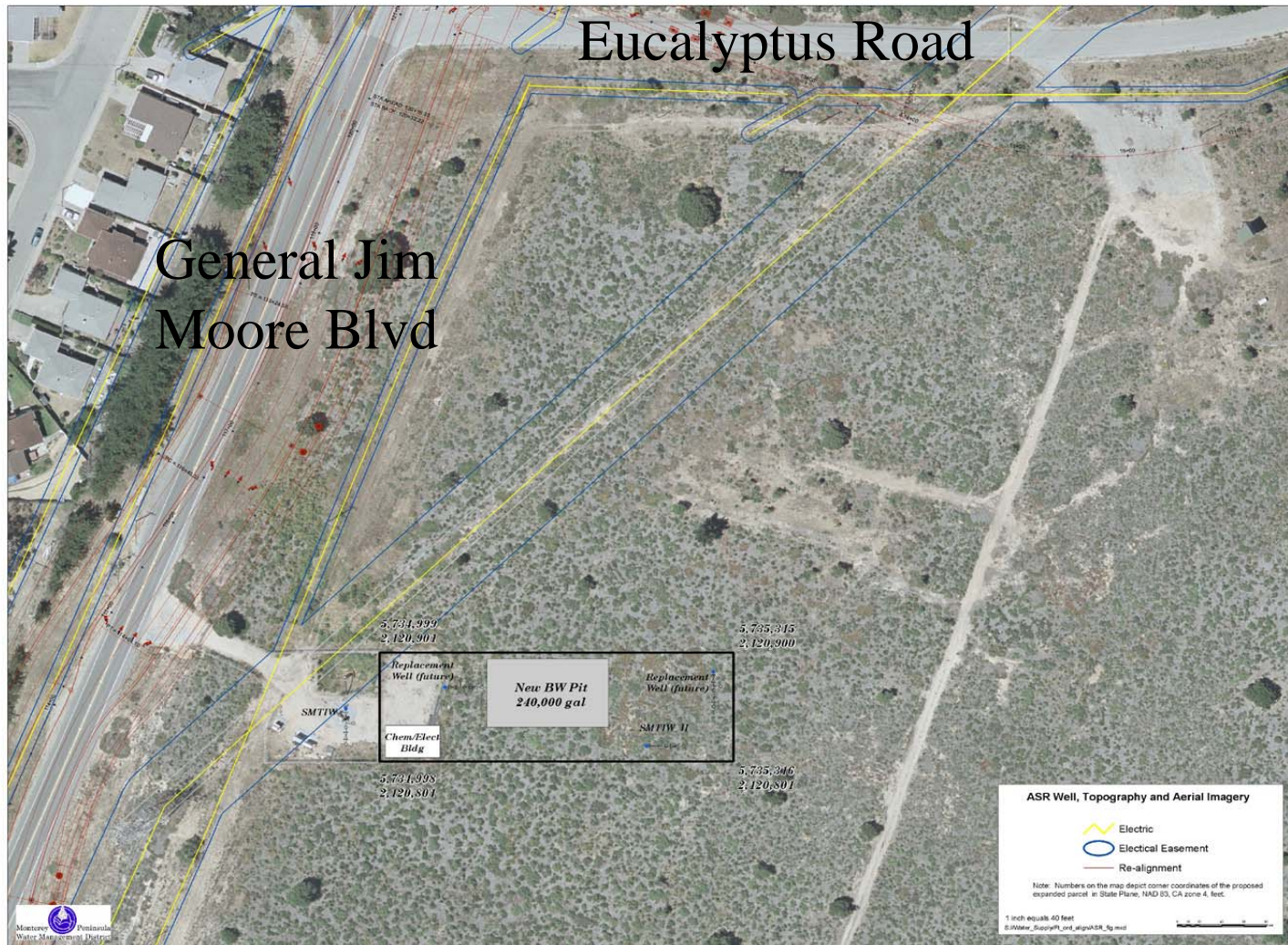


Phase 1 ASR Project (contd.)

- Environmental Impact Report certified in August 2006; federal, state and local permits approved; SWRCB water right diversion permit application in progress
- Construction underway; completion scheduled for March 1, 2007



Phase 1 ASR Project Site





Second ASR well under construction



Increasing the Water Supply – Long-Term Solutions

- Proposed long-term water need targets for Cal-Am service area—12,500 AFY replacement + 4,500 AFY future; input requested from cities, county, airport district (by May 15, 2007)



Long-Term Solutions (contd.)

- Cal-Am Coastal Water Project Moss Landing desalination facility application to CA Public Utility Commission; provide Peninsula jurisdictions' consensus on project production yield to meet long-term need, and input on alternative projects to be considered in draft EIR (by June 2007)



Long-Term Solutions (contd.)

- Refine MPWMD Comparative Matrix of Water Supply Project Alternatives, including ship-based desal proposal
- 14-member Ad hoc Community Advisory Committee formed to provide pros/cons analysis of seven alternative projects on Comparative Matrix (by September 2007)

Q&A

- MPWMD manages, augments, and protects water resources for the benefit of the community and the environment.
- Further information available on MPWMD website: www.mpwmd.dst.ca.us

