



EXHIBIT 1-C

MONTEREY PENINSULA WATER MANAGEMENT DISTRICT

5 HARRIS COURT, BLDG. G
POST OFFICE BOX 85
MONTEREY, CA 93942-0085 • (831) 658-5600
FAX (831) 644-9560 • <http://www.mpwmd.dst.ca.us>

NOTICE OF PUBLIC HEARING

Determination of Insufficient Physical Supply to Serve California American Water's Ryan Ranch Water Distribution System and Modify System Capacity and/or Expansion Capacity Limits; Ryan Ranch Research Park, City of Monterey – A list of Assessor's Parcel Numbers affected by this action is attached, as well as a map showing the WDS boundary.

Hearing Date/Time: January 21, 2009 beginning at 8:30 A.M. (continuing all day)

Location: MPWMD Conference Room, 5 Harris Court, Building "G", Monterey (Ryan Ranch)

The Board of Directors of the Monterey Peninsula Water Management District (MPWMD or District) will conduct a public hearing on the Ryan Ranch Water Distribution System (WDS) beginning at 8:30 A.M. on Wednesday, January 21, 2009, pursuant to MPWMD Rule 40.

District staff will present evidence that the physical water supply that serves California American Water's (CAW) Ryan Ranch WDS is not sufficient to support the current System Capacity of 175 acre-feet per year (AFY) and/or the current Expansion Capacity of 190 connections as specified for the Ryan Ranch WDS in November 1989. Representatives from CAW, owners or occupants of parcels within the WDS, and other persons potentially affected by modification of these limits will be allowed an opportunity to present evidence and recommendations for Board consideration. If the Board finds that the physical supply is insufficient to meet the permitted System and/or Expansion Capacity limits for the Ryan Ranch WDS, the Board will determine new System and/or Expansion Capacity limits for the system, based on substantial evidence, including credible expert evidence.

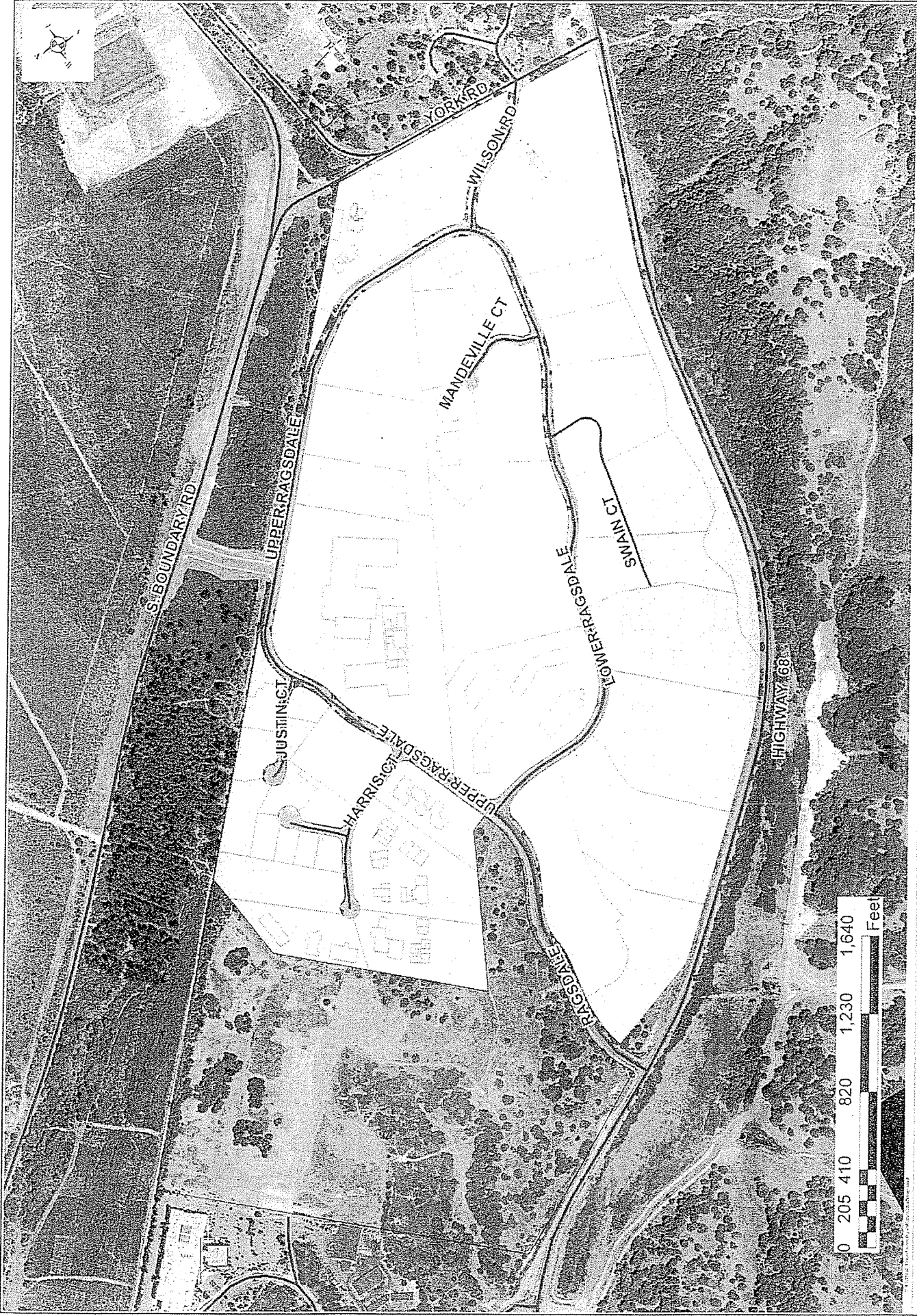
The District General Manager, consistent with Rule 40 (B), has directed District staff to suspend receipt of Water Permit applications for the Ryan Ranch WDS and to suspend processing of current Water Permit applications in progress. CAW has been directed to not issue any additional "will serve" letters to prospective customers in the Ryan Ranch WDS until written authorization is provided by the District.

If you are unable to attend the hearing, written comments should be received by the District office no later than 12:00 PM (noon) on Tuesday, January 20, 2009.

For questions regarding this hearing, please contact District Prosecution Team Leader Fran Farina at 805-681-8822 or ffarina@cox.net.

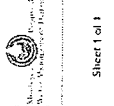
ASSESSOR'S PARCEL NUMBERS (APN)
Ryan Ranch Water Distribution System
December 2008

259-031-003	259-051-011	259-091-020	259-185-013
259-031-011	259-051-012	259-141-001	259-185-014
259-031-012	259-051-013	259-141-002	259-185-015
259-031-018	259-051-014	259-141-003	259-185-016
259-031-021	259-051-015	259-141-004	259-185-017
259-031-040	259-051-016	259-141-005	259-185-018
259-031-043	259-051-019	259-141-006	259-185-019
259-031-044	259-051-020	259-151-003	259-185-020
259-031-050	259-051-021	259-151-004	259-185-021
259-031-051	259-051-022	259-151-005	259-185-022
259-031-053	259-061-001	259-151-006	259-185-023
259-031-055	259-061-006	259-181-004	259-185-024
259-031-056	259-061-007	259-181-006	259-185-025
259-031-057	259-061-008	259-181-008	259-185-026
259-031-058	259-061-010	259-182-001	259-185-027
259-031-059	259-061-011	259-182-003	259-185-028
259-031-060	259-061-013	259-182-003	259-185-029
259-031-061	259-062-001	259-182-004	259-185-030
259-031-062	259-062-002	259-182-004	259-185-031
259-031-064	259-062-003	259-182-005	259-185-032
259-031-066	259-062-004	259-182-005	259-221-001
259-031-068	259-062-005	259-182-006	259-221-002
256-031-069	259-062-006	259-182-007	259-221-004
259-041-004	259-062-007	259-183-001	259-221-005
259-041-005	259-062-008	259-183-002	259-221-008
259-041-006	259-062-009	259-183-003	259-221-013
259-041-007	259-062-010	259-184-001	259-221-014
259-041-008	259-071-001	259-184-002	259-222-001
259-041-009	259-071-002	259-184-003	259-222-001
259-041-013	259-071-003	259-184-004	259-222-002
259-041-014	259-071-004	259-185-001	259-222-003
259-041-015	259-071-005	259-185-002	259-222-004
259-041-016	259-071-006	259-185-003	259-222-005
259-041-017	259-071-007	259-185-004	259-222-005
259-041-018	259-071-008	259-185-005	259-222-006
259-051-001	259-081-001	259-185-006	259-222-006
259-051-002	259-081-002	259-185-007	259-222-007
259-051-003	259-081-003	259-185-008	259-222-008
259-051-005	259-081-004	259-185-009	259-222-009
259-051-008	259-091-015	259-185-010	
259-051-009	259-091-017	259-185-011	
259-051-010	259-091-019	259-185-012	



**Ryan Ranch
Parcels**
Preliminary Map of Existing Parcel Boundaries

ROADS
PARCELS



The City of San Diego hereby certifies that the information contained herein is true and correct to the best of its knowledge and belief. This information is provided for informational purposes only and is not intended to constitute a warranty or any other form of insurance. The City of San Diego is not liable for any damages, including reasonable attorney's fees, arising from the use of this information. The City of San Diego is not responsible for any errors or omissions in this information. The City of San Diego is not responsible for any damages, including reasonable attorney's fees, arising from the use of this information. The City of San Diego is not responsible for any errors or omissions in this information. The City of San Diego is not responsible for any damages, including reasonable attorney's fees, arising from the use of this information.

Created by: Eric Sandberg
Date: December 23, 2008
City of San Diego, Planning and Economic Development Department