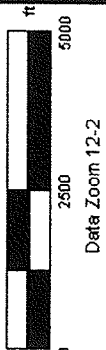
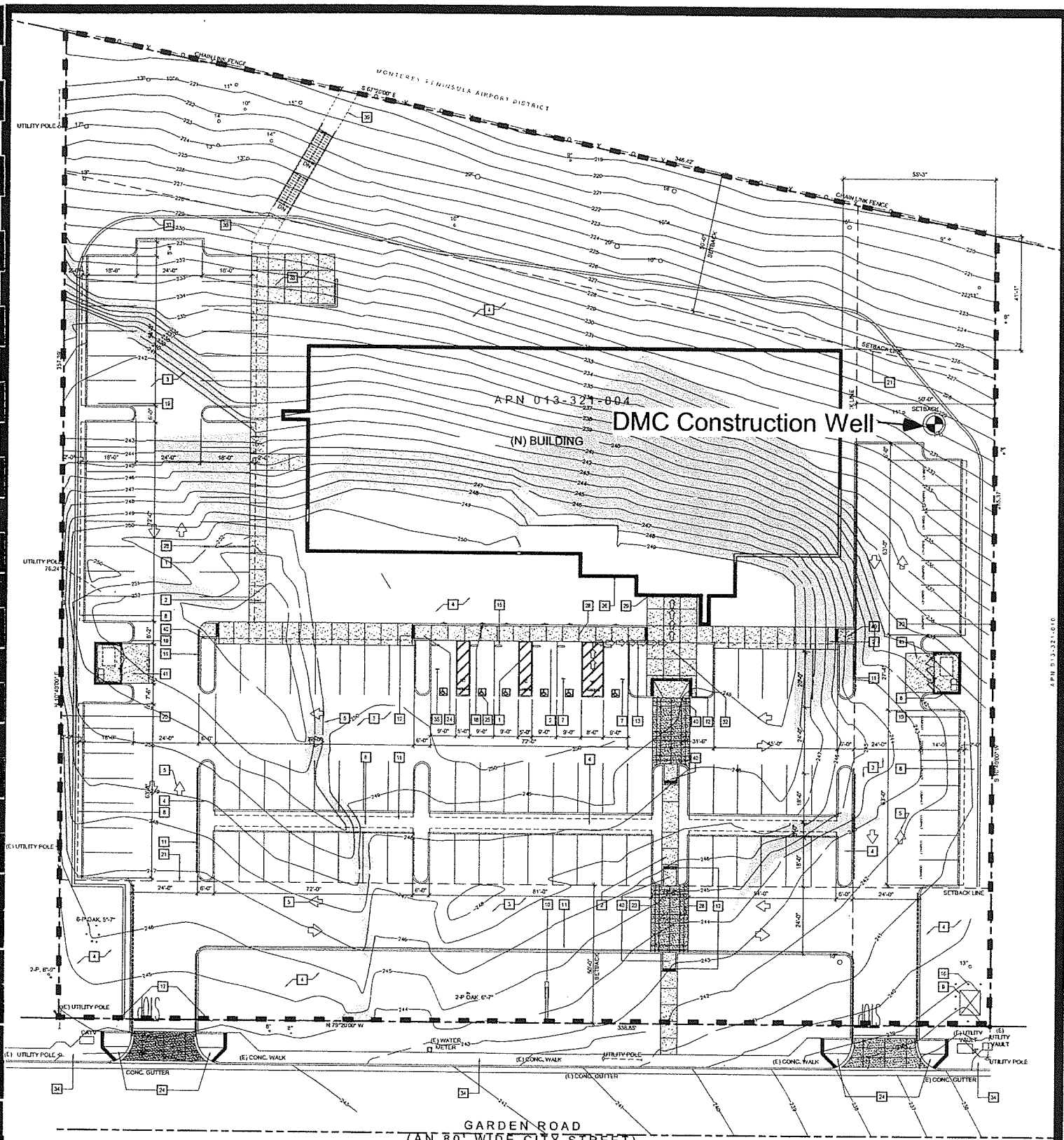


NOTES:
 1) Base Map From Delorme, TOPO USA 6.0 and uses USGS Topographic Maps, Monterey 7.5 min. quadrangle.
 2) Inset Map: Monterey Peninsula Water Management District Boundary Map, Sheet 17, Drafted November, 2003 and Updated July, 2005.



LOCATION MAP
 APN: 013-321-004
 2611 Garden Road, Monterey
 Monterey County, California

FIGURE 1



Base Map from Wald, Ruhnke & Dost Architects, LLP, Job #08053, dated 1/19/09

Notes:
Refer to original blue prints for additional site details. This Figure is to demonstrate well location in relation to site.

BIERMAN
Hydrogeologic
 A Professional Company
 Hydrogeologic Consulting & Water Resource Management

SITE MAP
 APN: 013-321-004
 2611 Garden Road, Monterey
 Monterey County, California

FIGURE
2

By: AB; 1/5,7/09
 File: DMC/Figures/SiteMap.cvx