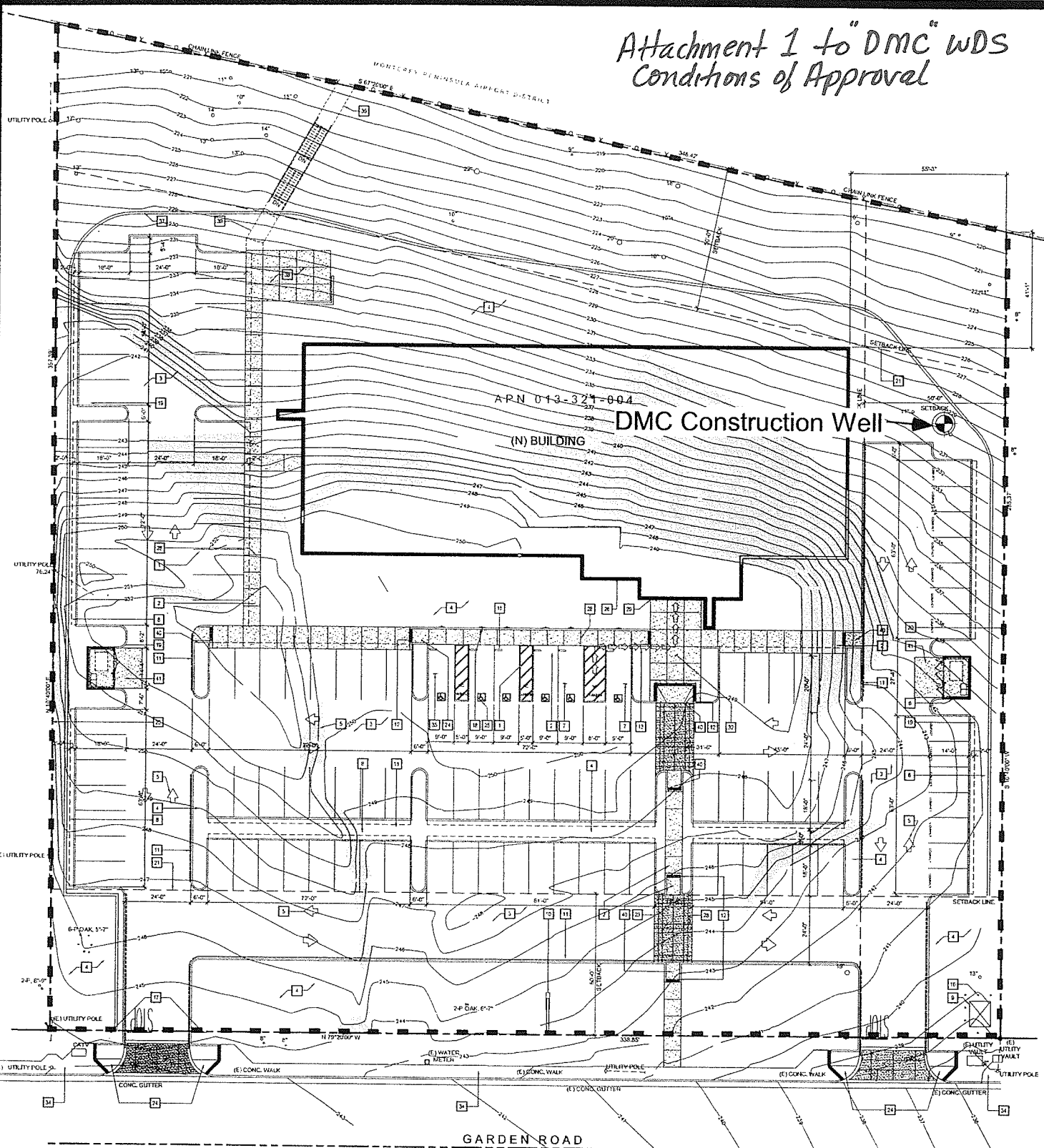


Attachment 1 to "DMC" WDS
Conditions of Approval



Base Map from Wald, Ruhnke & Dost Architects, LLP, Job #08053, dated 1/19/09

Notes:
Refer to original blue prints for additional site details. This Figure is to demonstrate well location in relation to site.

BIERMAN
Hydrogeologic
A Professional Company
Hydrogeologic Consulting & Water Resource Management

SITE MAP
APN: 013-321-004
2611 Garden Road, Monterey
Monterey County, California

FIGURE
2

By: AB; 1/5/09
File: DMC/Figures/SiteMap.cvx