

THE SIENNA COMPANY
227 Avenida Street, Suite H
Monterey, CA 93940
Tel: 831-441-0090
Fax: 831-441-1002

Consultants

Project
**Ocean View
Plaza**

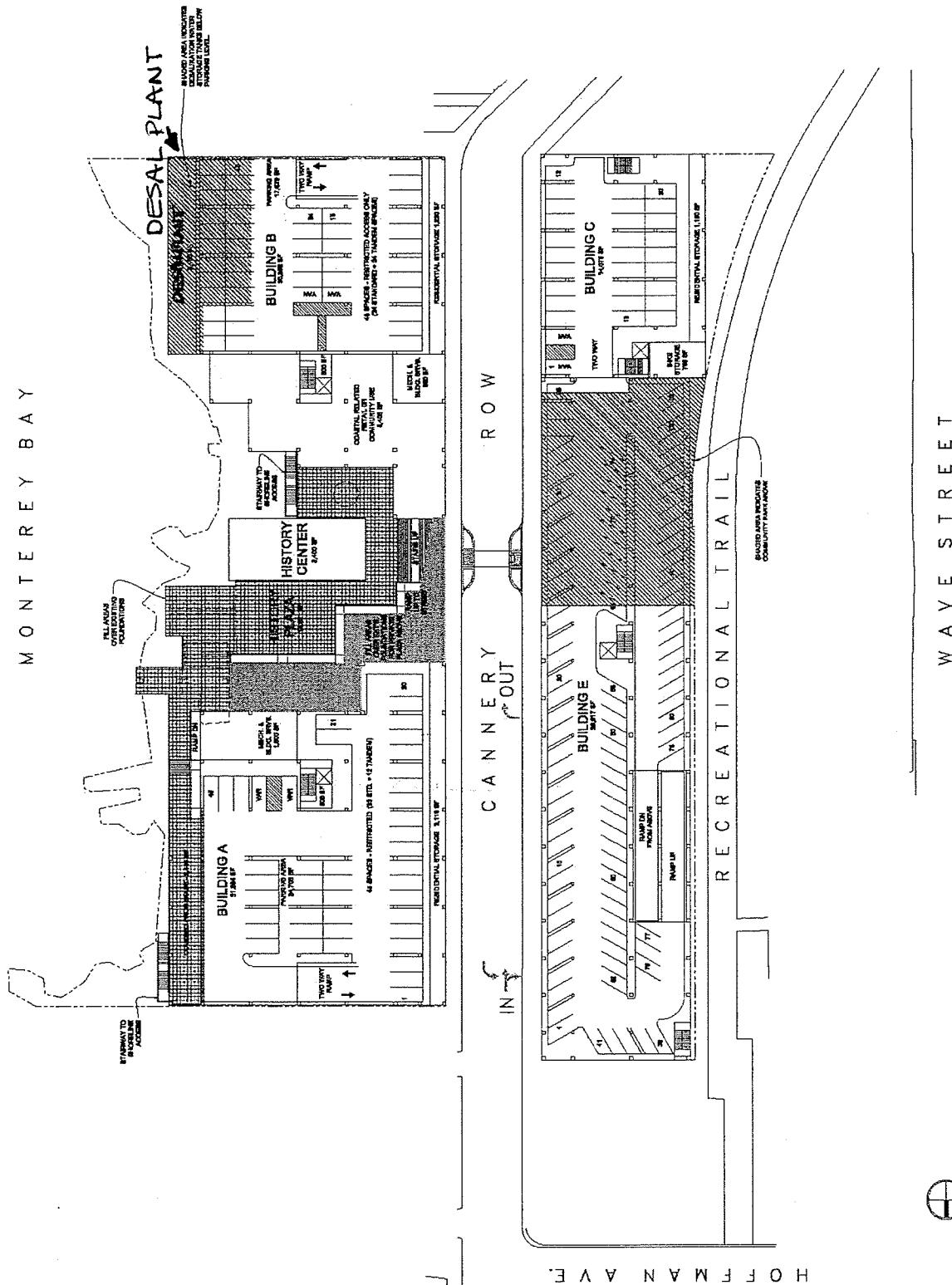
Project Location
Cannery Row
Monterey, CA 93940

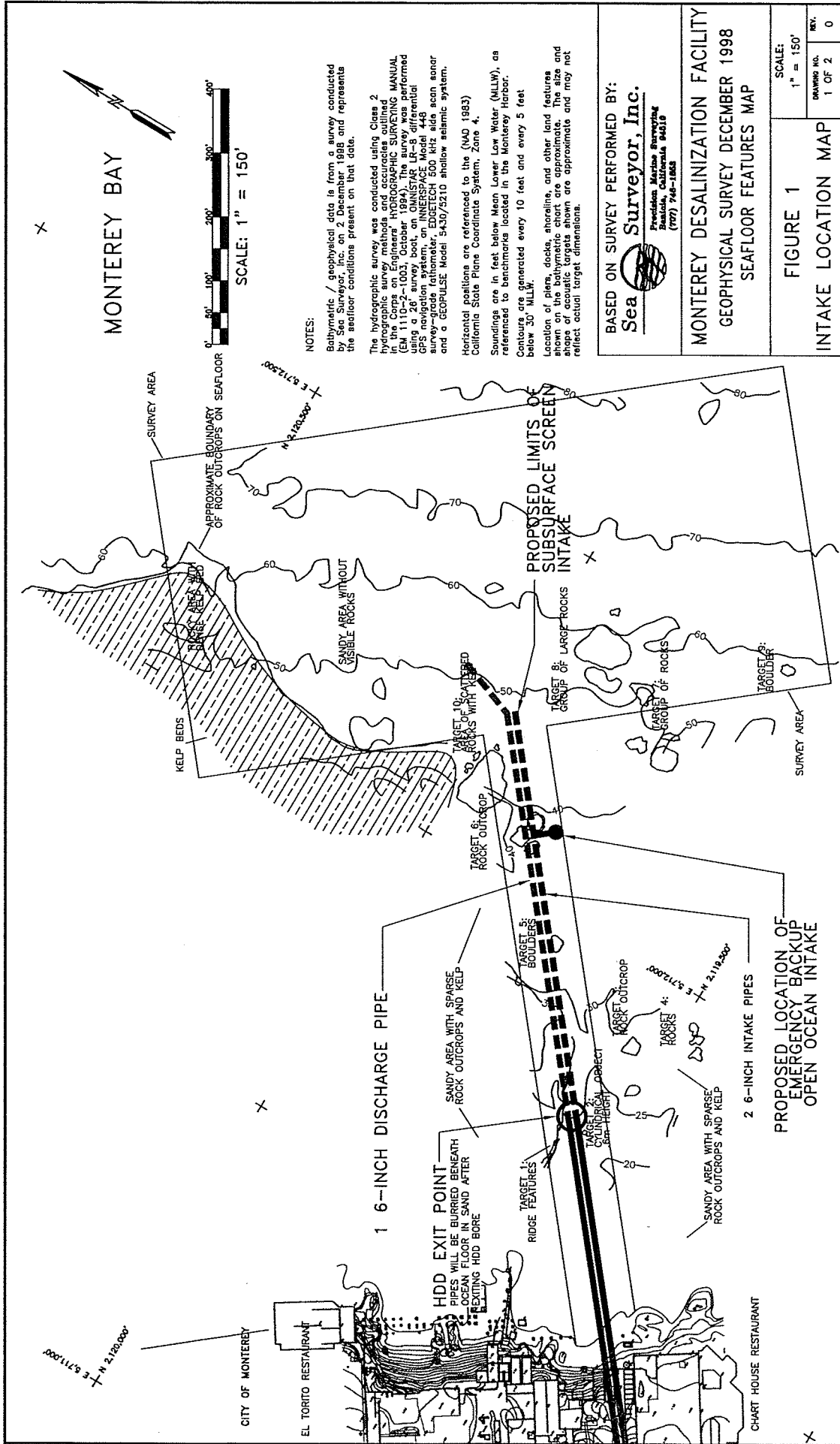
Project No. 0401.001
Issue Date October 9, 2003
Revisions

Drawing Scale 1"=30'-0"
Sheet Title
Bay Level Plan

A201

MONTEREY BAY





MONTEREY BAY



NOTES:

Bathymetric / geophysical data is from a survey conducted by Sea Surveyor, Inc. on 2 December 1988 and represents the seafloor conditions present on that date.

The hydrographic survey was conducted using Cissa 2 hydrographic survey methods and accuracies outlined in the manual for the Cissa 2 system. The survey was performed using a 26' survey boat, an OMNISTAR LR-8 differential GPS navigation system, an INERSPACE Model 448 survey-grade fathometer, EDGE TECH 500 KHz side scan sonar and a GEOPULSE Model 5430/5210 shallow seismic system.

Horizontal positions are referenced to the (NAD, 1983) California State Plane Coordinate System, Zone 4.

Soundings are in feet below Mean Lower Low Water (MLLW), as referenced to benchmarks located in the Monterey Harbor.

Contours are generated every 10 feet and every 5 feet below 30' MLLW.

Location of piers, docks, shoreline, and other land features shown on the bathymetric chart are approximate. The size and shape of acoustic targets shown are approximate and may not reflect actual target dimensions.

BASED ON SURVEY PERFORMED BY:



MONTEREY DESALINATION FACILITY GEOPHYSICAL SURVEY DECEMBER 1988 SEAFLOOR FEATURES MAP

<p>FIGURE 1</p> <p>INTAKE LOCATION MAP</p>	<p>SCALE:</p> <p>1" = 150'</p>
	<p>DRAWING NO.</p> <p>1 OF 2</p>
<p>REV.</p> <p>0</p>	



THE SIENNA COMPANY
221 Alvarado Street, Suite 4
Monterey, CA 93940
Tel: 831-641-5000
Fax: 831-641-5000

RECEIVED
MAY 24 2004
CITY OF MONTEREY
PLANNING DIVISION

CHERIAN + D'ANGELO
CITY OF MONTEREY PLANNING DIVISION
CITY OF MONTEREY PLANNING DIVISION

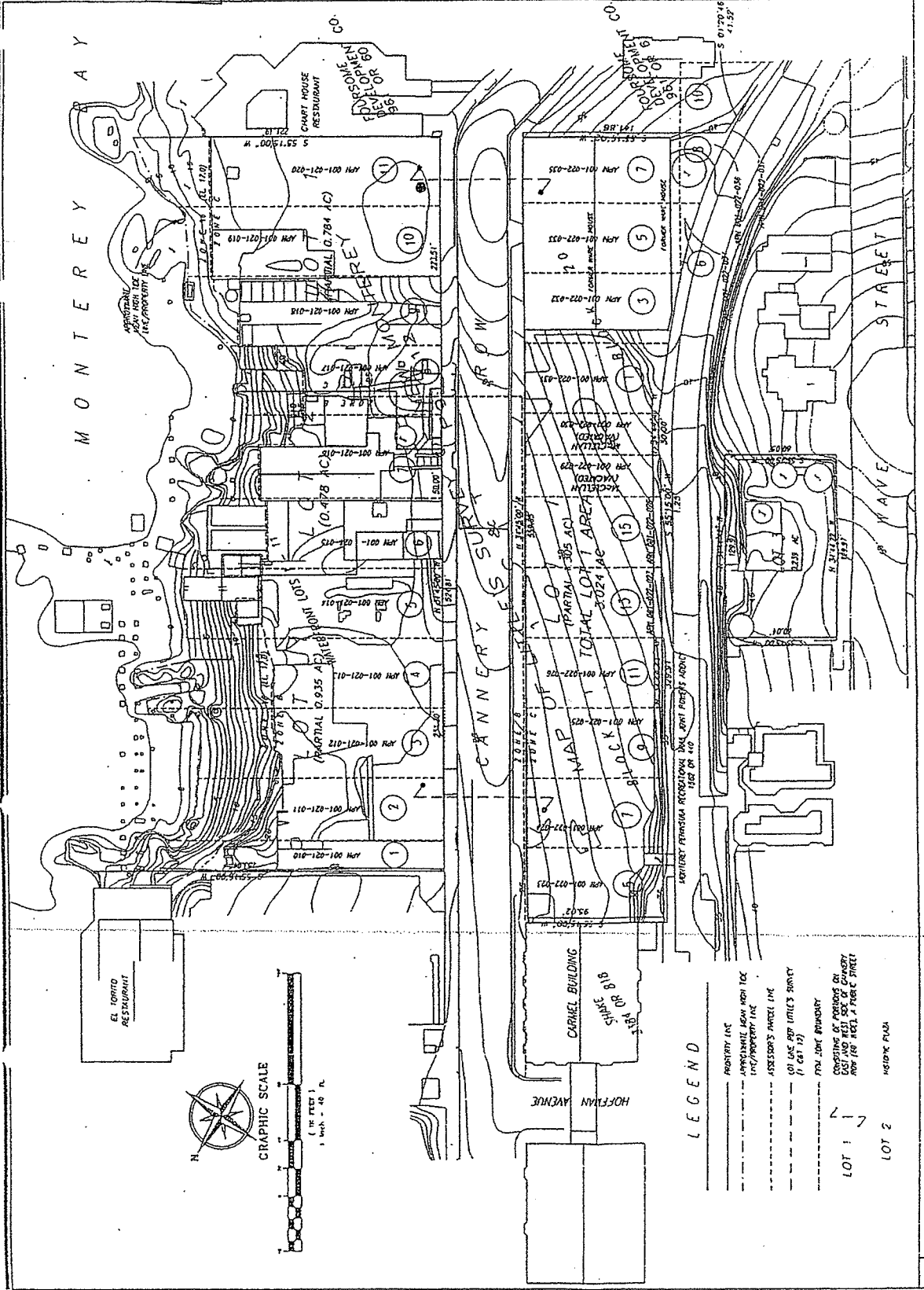
Project
Ocean View Plaza

Project Location
Canary Row
Monterey, CA 93940

Project No. 041.001
Issue Date October 1, 2003
Revisions

Design Staff
Project Title
Existing
Site Plan

C101



LEGEND

- PROPERTY LINE
- APPROXIMATE BOUNDARY LINE
- ASSESSOR'S PARCEL LINE
- LOT BOUNDARY
- EASEMENT
- COOPERATION OF PARCELS ON EAST AND WEST SIDES OF CANNERY ROW (SEE MAP AT THESE STREETS)
- WATER PLAZA

List of Assessor's Parcel Numbers
Ocean View Community Services District
Pre-Application Form
For Water Distribution System (WDS) Permits

Assessor's Parcel Numbers:

001-021-010
001-021-011
001-021-012
001-021-013
001-021-014
001-021-015
001-021-016
001-021-017
001-021-018
001-021-019
001-021-020
001-022-023
001-022-024
001-022-025
001-022-026
001-022-027
001-022-028
001-022-029
001-022-030
001-022-031
001-022-032
001-022-033
001-022-034
001-022-035
001-022-036
001-022-037