

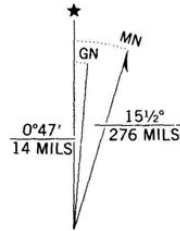
Watershed Map Sleepy Hollow Ford Removal and Bridge Replacement Project



FIGURE 1.

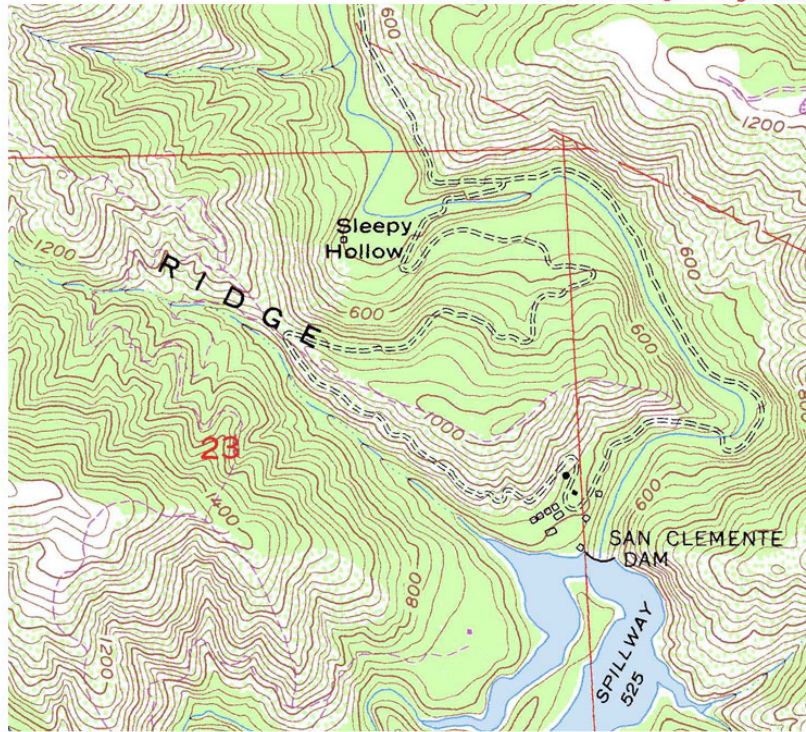
- Rivers
- Watershed Boundaries

Project Location Topographic Map

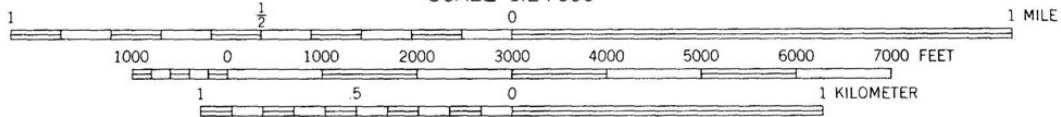


UTM GRID AND 1984 MAGNETIC NORTH
DECLINATION AT CENTER OF SHEET

Map photoinspected 1974
No major culture or drainage changes observed



SCALE 1:24 000

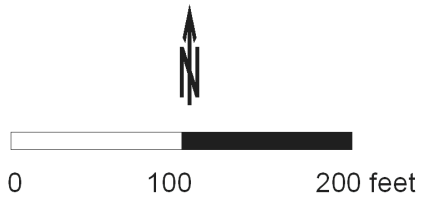
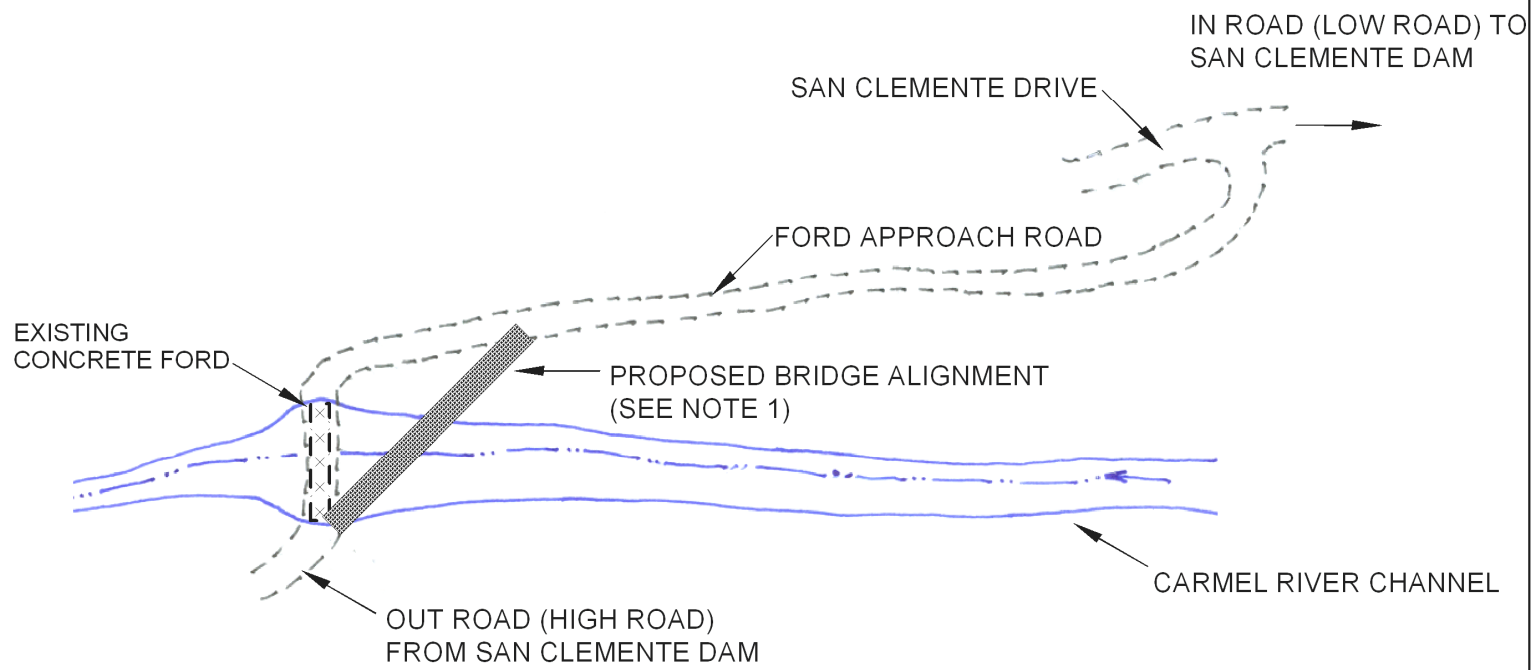


CARMEL VALLEY, CALIF.

CONTOUR INTERVAL 40 FEET
NATIONAL GEODETIC VERTICAL DATUM OF 1929

THIS MAP COMPLIES WITH NATIONAL MAP ACCURACY STANDARDS
FOR SALE BY U. S. GEOLOGICAL SURVEY, DENVER, COLORADO 80225
OR RESTON, VIRGINIA 22092
A FOLDER DESCRIBING TOPOGRAPHIC MAPS AND SYMBOLS IS AVAILABLE ON REQUEST

PLAN VIEW SKETCH



NOTES

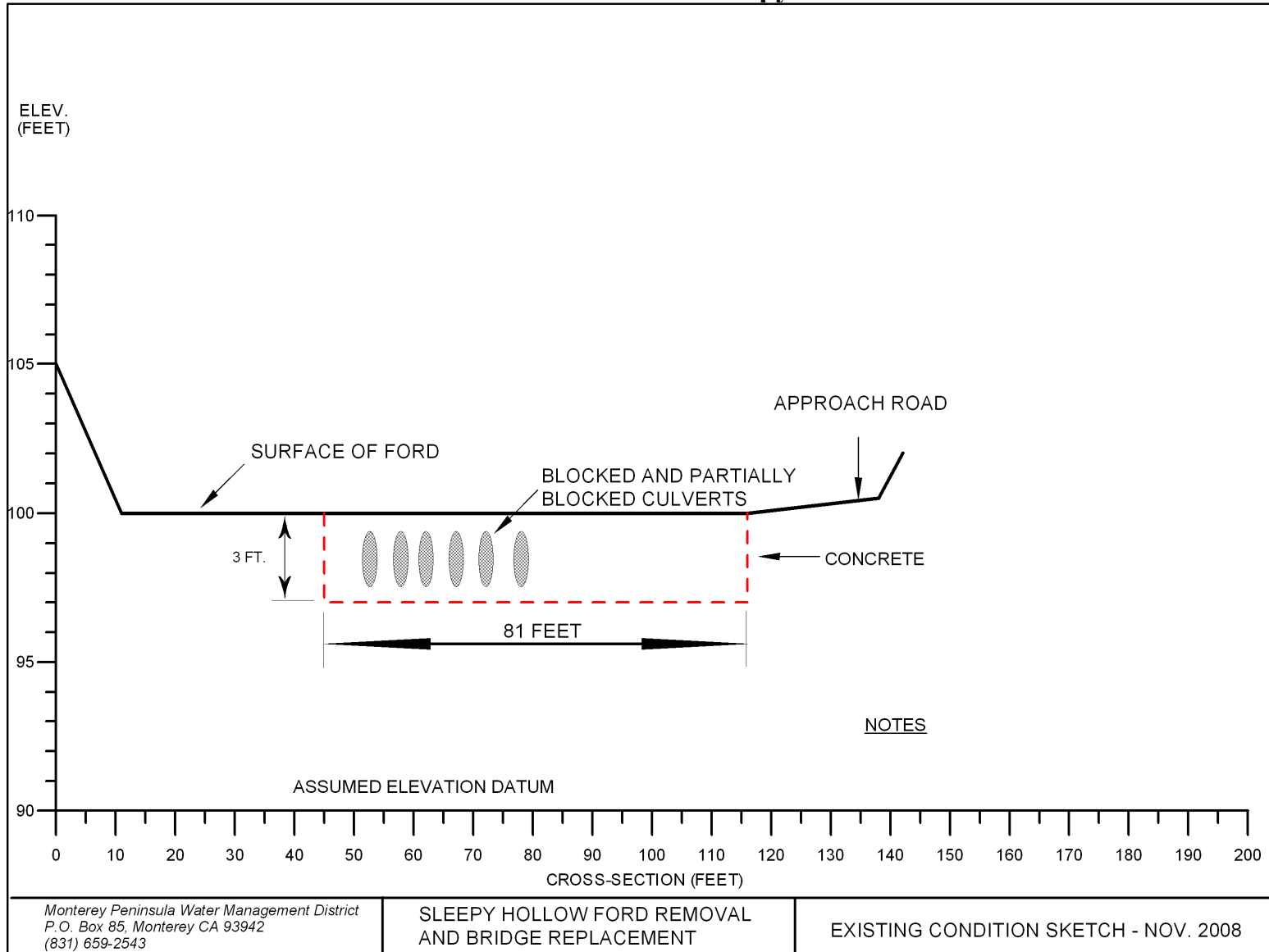
1. Approximate alignment shown. Final alignment to be determined after geotechnical investigation and scour analysis is complete.

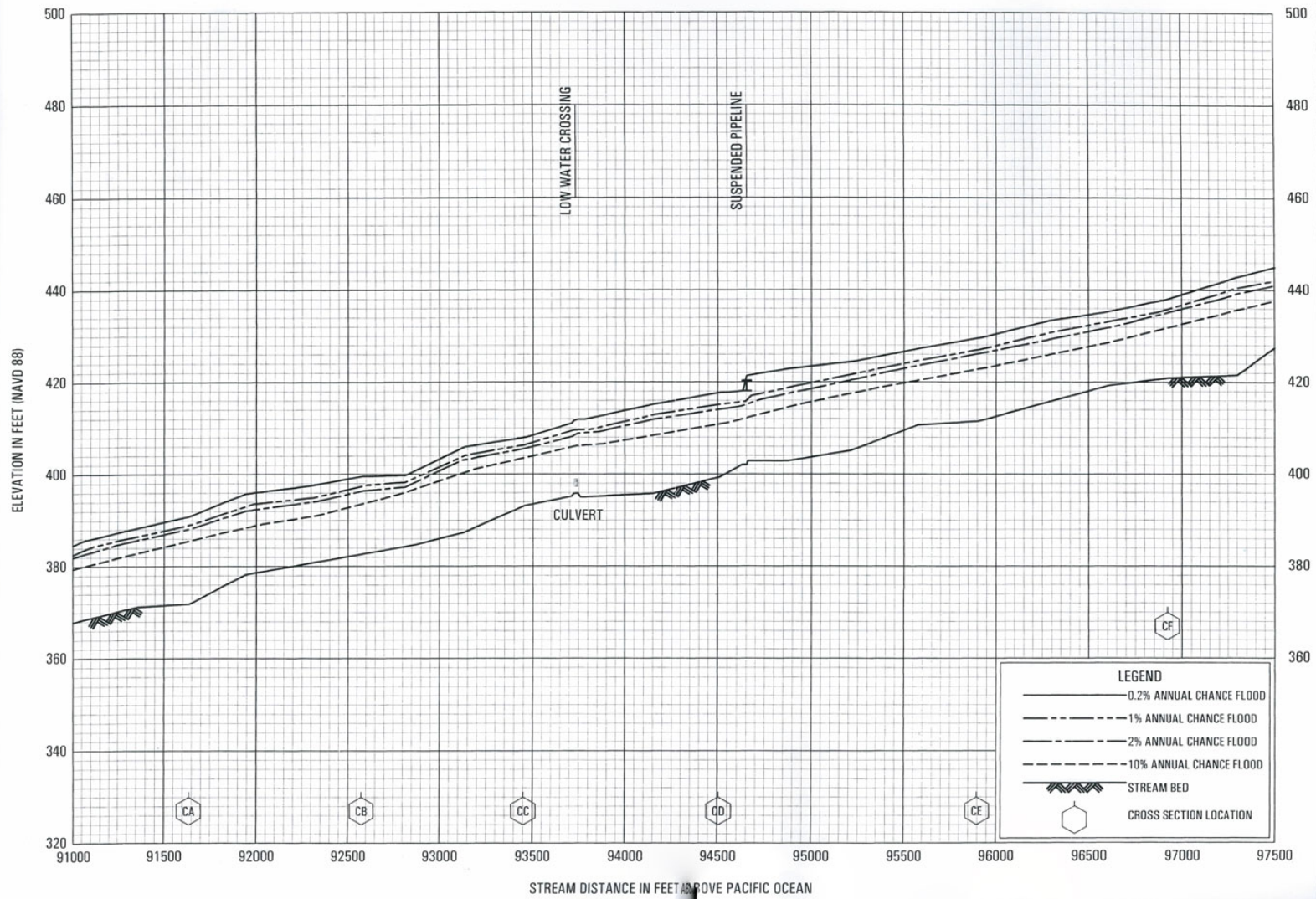
Monterey Peninsula Water Management District
 P.O. Box 85, Monterey CA 93942
 (831) 659-2543

SLEEPY HOLLOW FORD REMOVAL
 AND BRIDGE REPLACEMENT

EXISTING CONDITION PLAN SKETCH
 NOVEMBER 2008

Cross-Section View Sketch at Sleepy Hollow Ford





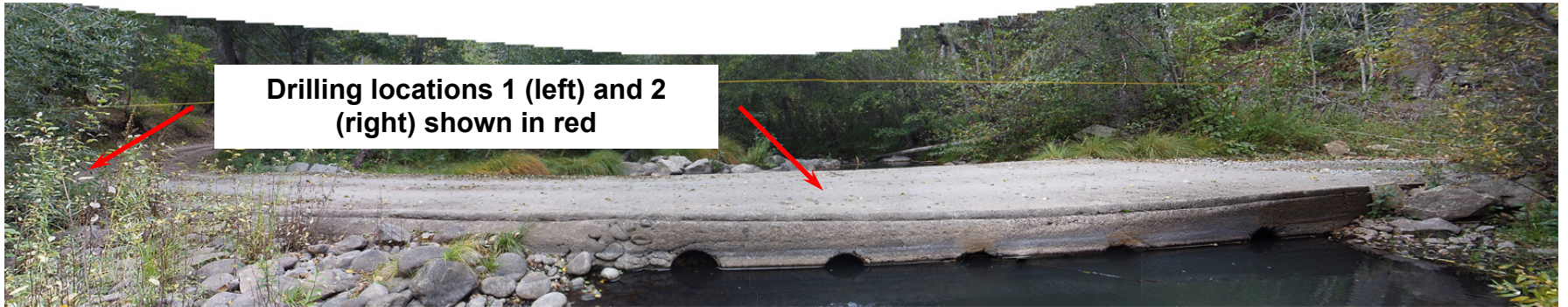
FLOOD PROFILES

CARMEL RIVER

FEDERAL EMERGENCY MANAGEMENT AGENCY
 MONTEREY COUNTY, CA
 AND INCORPORATED AREAS

33P

Sleepy Hollow Ford Removal and Bridge Replacement Project – Carmel River, Monterey County



Drilling locations 1 (left) and 2 (right) shown in red

Above - looking downstream at Sleepy Hollow ford (north is to right)



Looking upstream from north side (above)



Looking north from center of ford toward approach

Sleepy Hollow Ford Removal and Bridge Replacement Project – Carmel River, Monterey County



Looking downstream from ford after just over 4,500 cfs event – October 23, 2009

Sleepy Hollow Ford Removal and Bridge Replacement Project – Carmel River, Monterey County
Looking at proposed left abutment location



Sleepy Hollow Ford Removal and Bridge Replacement Project – Carmel River, Monterey County
Looking at proposed right abutment location (on the approach to the ford)





Above – typical double-double chord reinforced Bailey Bridge (clear span)