



General Manager's Report Item 20:

Status Report on Cal-Am Compliance
with SWRCB Orders and Seaside Basin
Decision as of June 30, 2011

July 18, 2011, Regular Meeting
Staff contact: Darby Fuerst

Actual versus Target Production for Cal-Am: Oct 2010 – Jun 2011

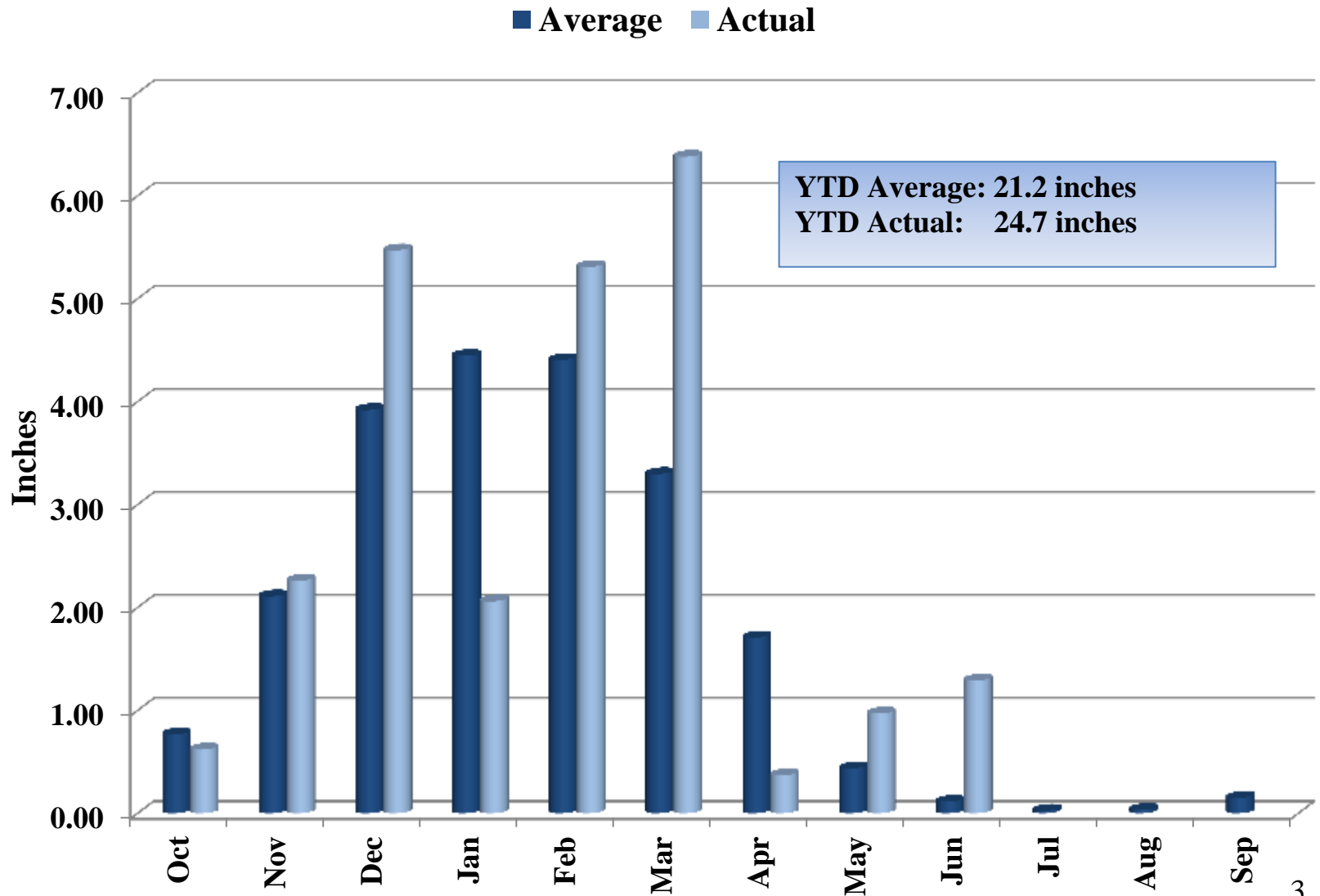
(All Values in Acre-Feet)

Year-to-Date Values	Carmel River Basin	Water Project 1	Seaside Groundwater Basin			MPWRS Total
			Coastal	Laguna Seca	Sand City	
Target	6,300	1,111	1,720	158	225	9,514
Actual	<u>5,524</u>	<u>1,111</u>	<u>1,509</u>	<u>256</u>	<u>206</u>	<u>8,606</u>
Difference	776	0	211	-98	19	908

Notes:

1. “Sand City” refers to the Sand City Desalination Facility, which pumps brackish water from the Seaside Groundwater Basin as source water. The Sand City values refer to yield from the facility.
2. “Water Project 1” refers to the Phase 1 Aquifer Storage and Recovery (ASR) Project and the values refer to the amount of stored water recovered for customer service.
3. “MPWRS” refers to Monterey Peninsula Water Resource System. All values shown are production for customer service.

Recorded Rainfall at San Clemente Dam: Water Year 2011



Estimated Unimpaired Carmel River Flow at San Clemente Dam: Water Year 2011

