



General Manager's Report Item 11:

Status Report on Cal-Am Compliance
with SWRCB Orders and Seaside Basin
Decision as of May 1, 2015

Meeting Date: May 18, 2015

Staff contact: David J. Stoldt

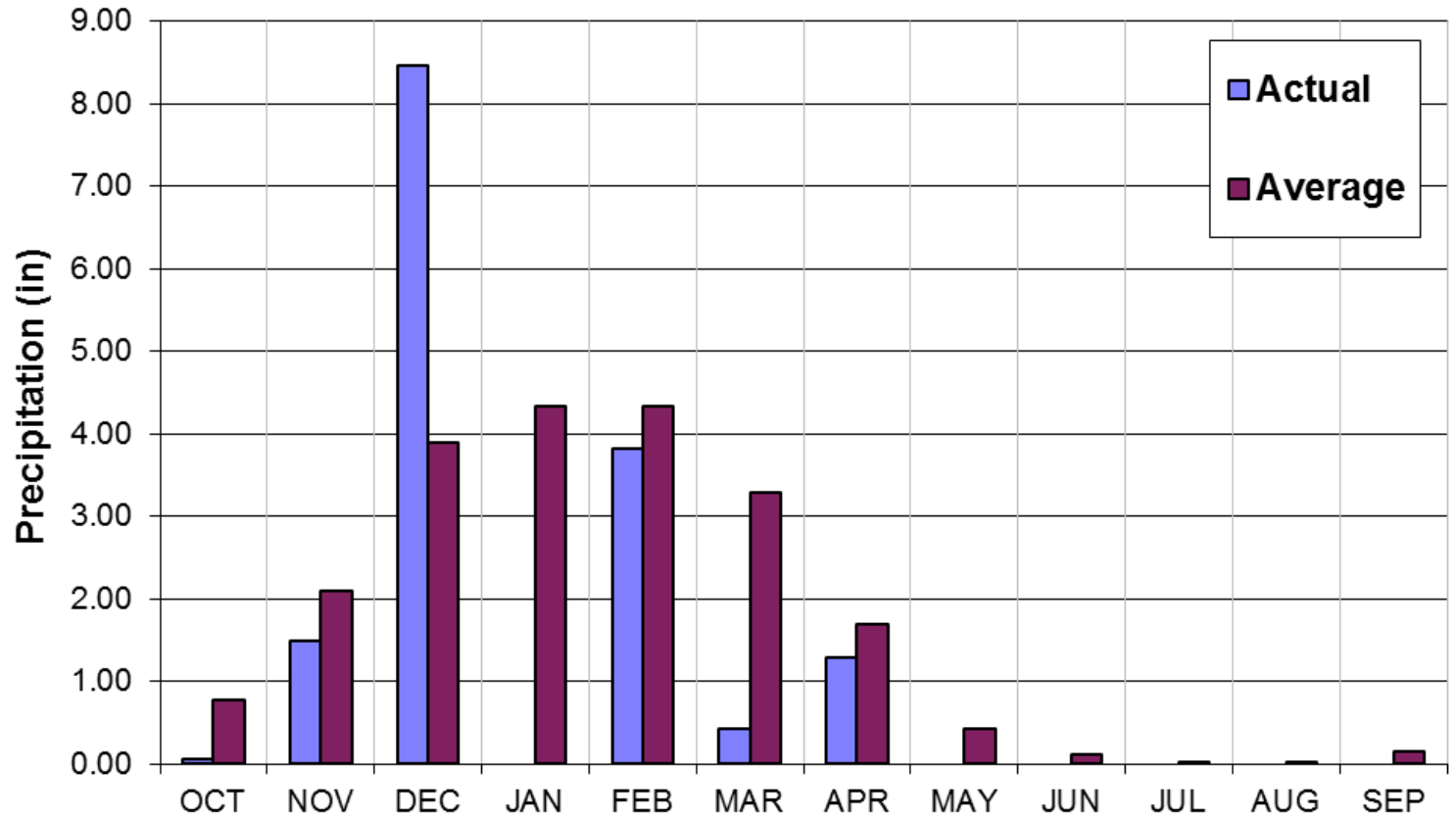
Actual versus Target Production for Cal-Am: May 2015 (All Values in Acre-Feet)

Year-to-Date Values	Carmel River Basin	Seaside Groundwater Basin		Water Projects		MPWRS Total
		Coastal	Laguna Seca	ASR Projects	Sand City	
Target	4,909	1,100	22	0	175	6,206
Actual	4,127	1,011	171	0	132	5,442
Difference	782	89	-149	0	43	764

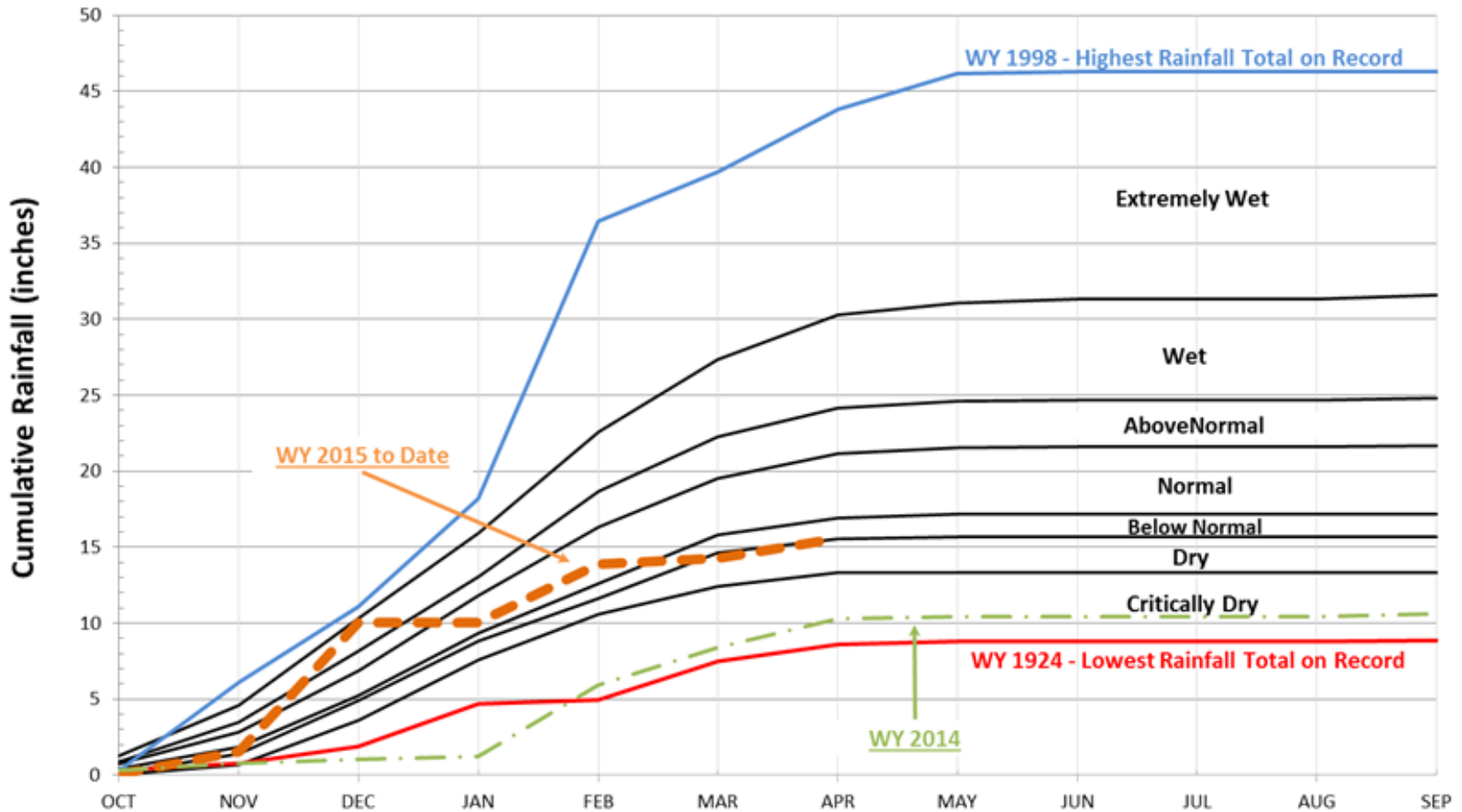
Notes:

1. “Sand City” refers to the Sand City Desalination Facility, which pumps brackish water from the Seaside Groundwater Basin as source water. The Sand City values refer to yield from the facility.
2. “ASR Projects” refers to the Phase 1 and 2 Aquifer Storage and Recovery (ASR) Project and the values refer to the amount of stored water recovered for customer service.
3. “MPWRS” refers to Monterey Peninsula Water Resource System.
4. Carmel River Basin Target reflects assumed annual production of 300 AF from Sand City.
5. Production numbers are estimated pending finalization of CAW production data.
6. Carmel River Basin target represents quarterly adjustments based on differences between budgeted values and actual production from other sources.

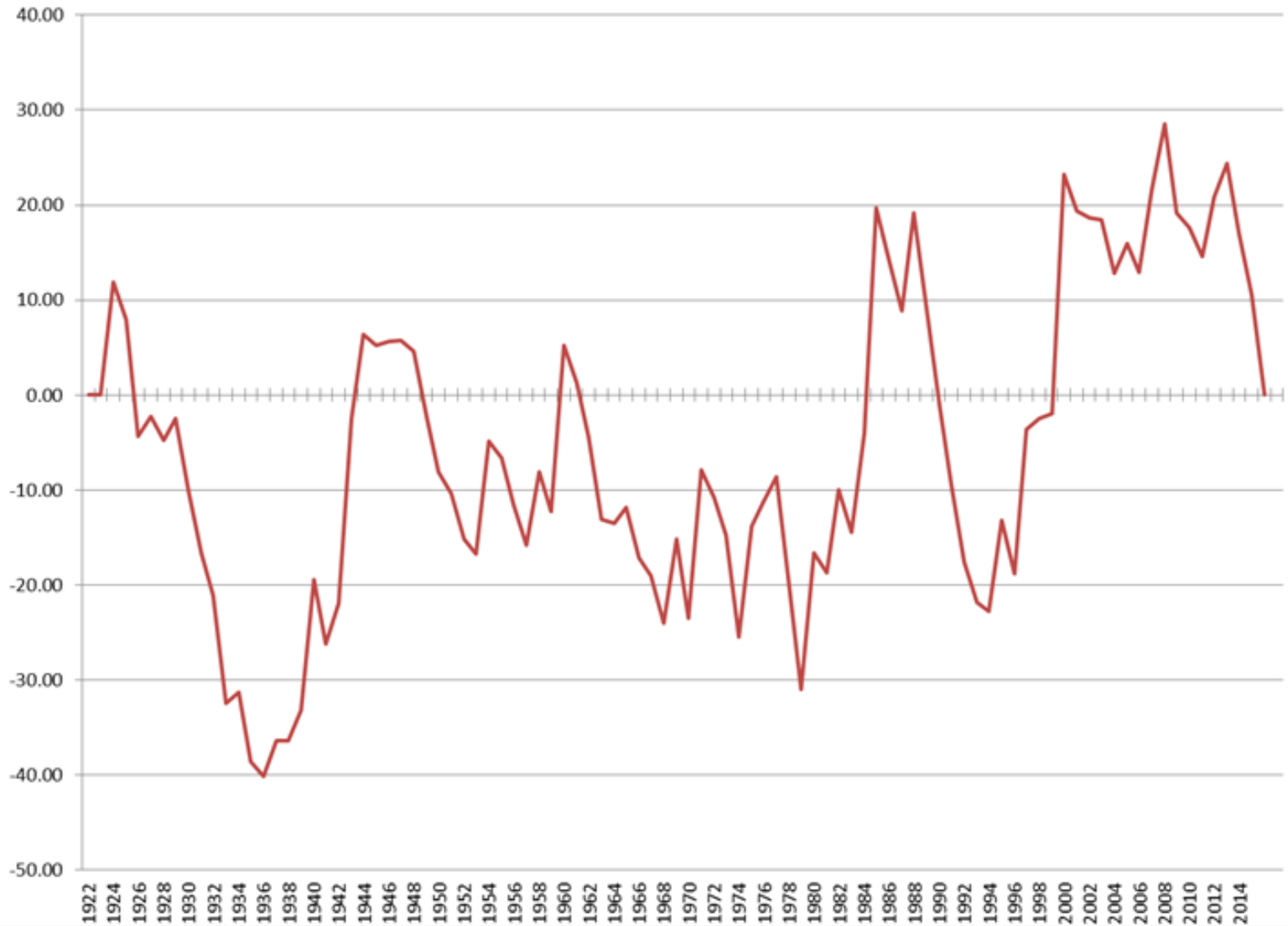
Recorded Rainfall at San Clemente Dam: Water Year 2015



Water Year Classification By Recorded Rainfall



Rainfall Cumulative Departure from Mean



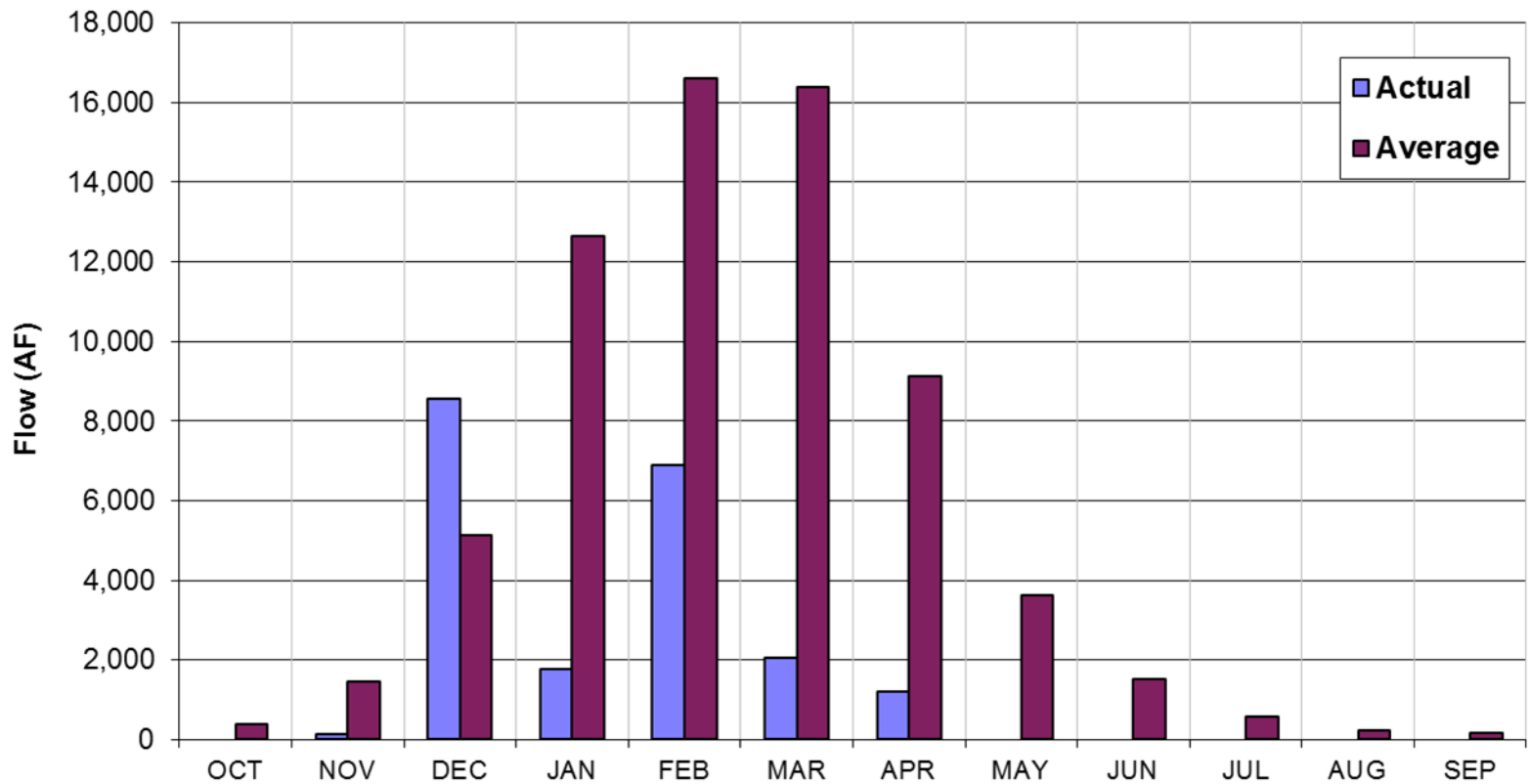
Droughts

(Based on Cumulative Departure
From Mean Precipitation Record)

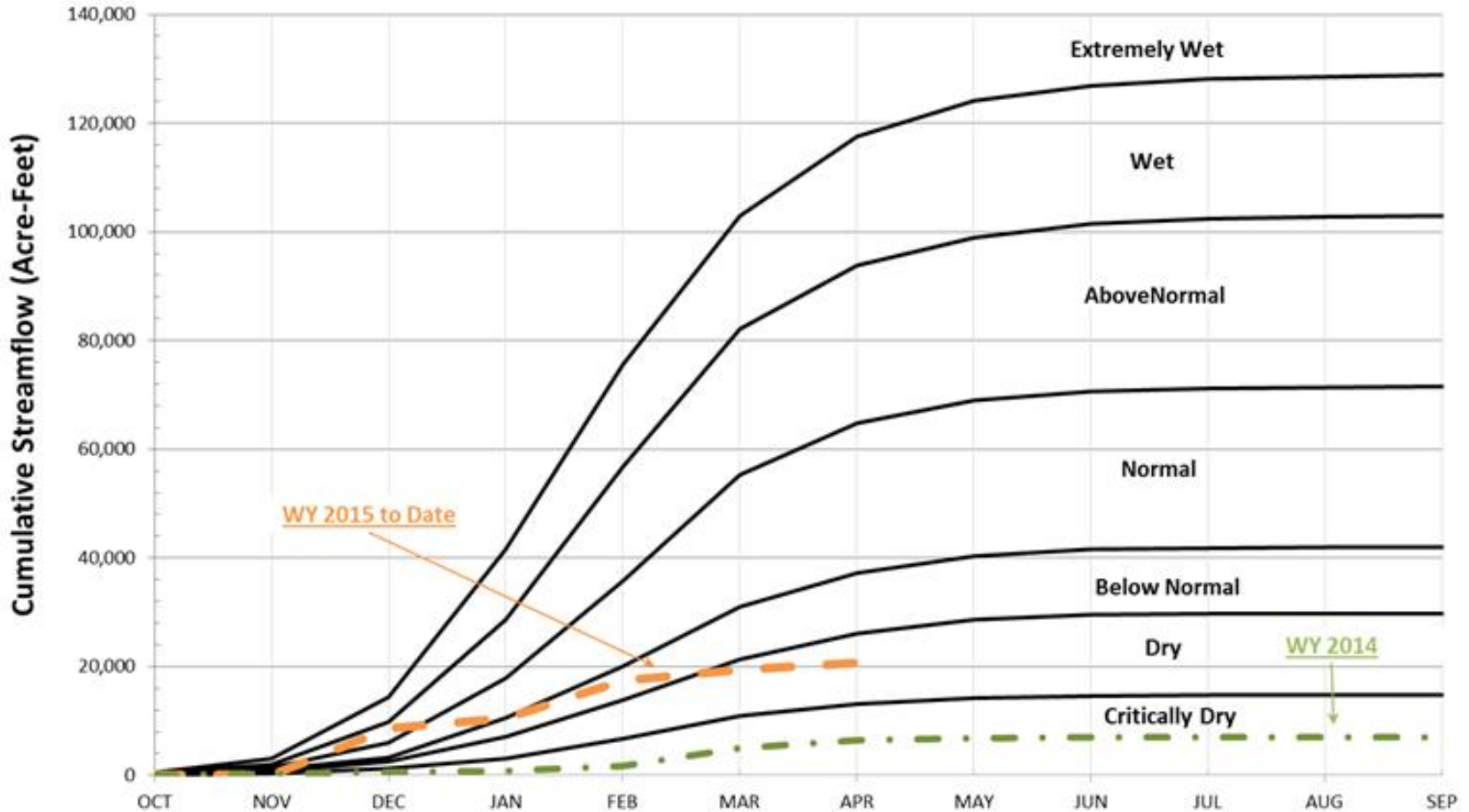
- 1924 – 1936 52.01 inches
- 1988 – 1994 41.96 inches
- 1960 – 1968 29.62 inches
- **2013 – 2015 24.38 inches**
- 1947 – 1953 22.53 inches
- 1977 – 1979 22.34 inches
- 1971 – 1974 17.94 inches



Estimated Unimpaired Carmel River Flow at San Clemente Dam: Water Year 2015



Water Year Classification by Unimpaired Flow



Recorded Rainfall v. Carmel Valley Aquifer Storage

