



# **New State Conservation Mandates and Impact on the Monterey Peninsula**

*May 18, 2015 MPWMD Board Meeting  
Agenda Item 13*

# State Water Board Emergency Regulations

- Focus on (a) Water Waste, (b) Mandatory conservation, and (c) Reporting
- State Water Board amended and re-adopted August 2014 drought-related emergency water conservation regulations in March 2015, including fines
- Additional Water Waste regulations added
- Current Water Waste regulations remain, including 2-day per week watering schedule (Wednesday and Saturday)
- California Energy Commission adopted lower requirements for faucets and urinal water efficiency

# Potable Water Waste Defined

New State Law	Water Management District
Landscape Irrigation Overflow	Same
Landscape Irrigation w/in 48 Hours of Rain	New
2 Day per Week Landscape Irrigation	Same, Saturdays and Wednesdays
New Irrigation Not Consistent with CA Code	Same
Irrigation of Turf in Street Medians	New
Serving Water Other Than Upon Request	Same
Hotel Linen Programs	Same
Washing a Car without Shut-Off Nozzle	Same
Cleaning Sidewalks or Driveways	Same, but more surfaces
Water Features w/o Recirculation	Same
	Leaks Not Repaired w/in 72 Hours
	Power Washing Structures
	Hand Watering w/o Shut-Off Nozzle
	Draining and Refilling Swimming Pools
	Charity Car Washes
	Failure to Meet Mandated Efficiency Standards
	Unmetered Hydrant Use
	Water in Excess of a Ration
	Several Others

# Governor's April 1 Executive Order

- Mandates a statewide 25 percent reduction on potable urban water use through February 2016.
- Requires mandatory conservation for the first time in the State's history.
  - Governor Brown: Conserving water now will forestall impacts if it does not rain next year.
- State Water Board adopted regulations to implement the Governor's Order on May 6th
  - District met with State staff and commented during comment periods

# New Mandatory Conservation Standards

- Order 400+ water suppliers by Residential Gallons per Capita per Day (GPCD) for Jul-Aug-Sep 2014
- Create 9 categories of reduction targets 4% to 36%
- Target is based on total system water production
- Will be judged based on June to February usage
- Target is relative to 2013 for same period
- Compliance measured monthly on a cumulative basis

# New Mandatory Conservation Standards


Category	Range GPCD	Reduction Required	#	Example Community And GPCD
1	Reserved	4%	0	
2	< 65	8%	23	Monterey Peninsula (51.3)
3	65 – 79	12%	24	Santa Ana (78.3)
4	80 – 94	16%	44	Sunnyvale (85.2)
5	95—109	20%	51	Watsonville (100.3)
6	110 – 129	24%	48	Chino (126.7)
7	130 – 169	28%	82	Morgan Hill (161.3)
8	170 – 214	32%	54	Suburban Sacramento (222.5)
9	> 215	36%	85	Palm Springs (416.0)

# Other Local Communities

Community	GPCD	Reduction Required
Santa Cruz	47	8%
King City	68	12%
Marina	76	12%
Greenfield	84	16%
Salinas (Cal Water Service)	85	16%
Scott's Valley	92	16%
Gilroy	118	24%
Salinas (ALCO)	124	24%

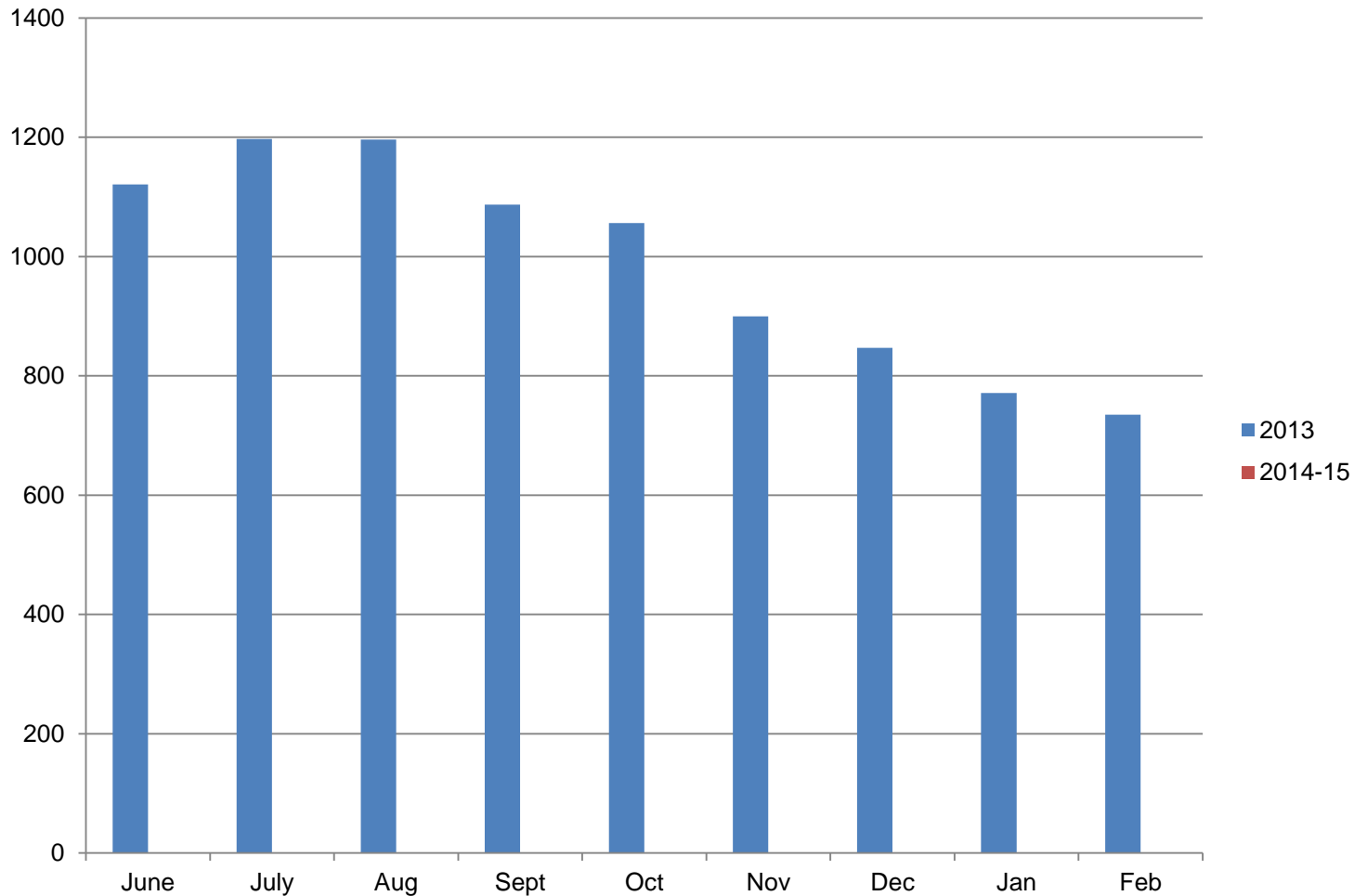


# New Mandatory Conservation Standards

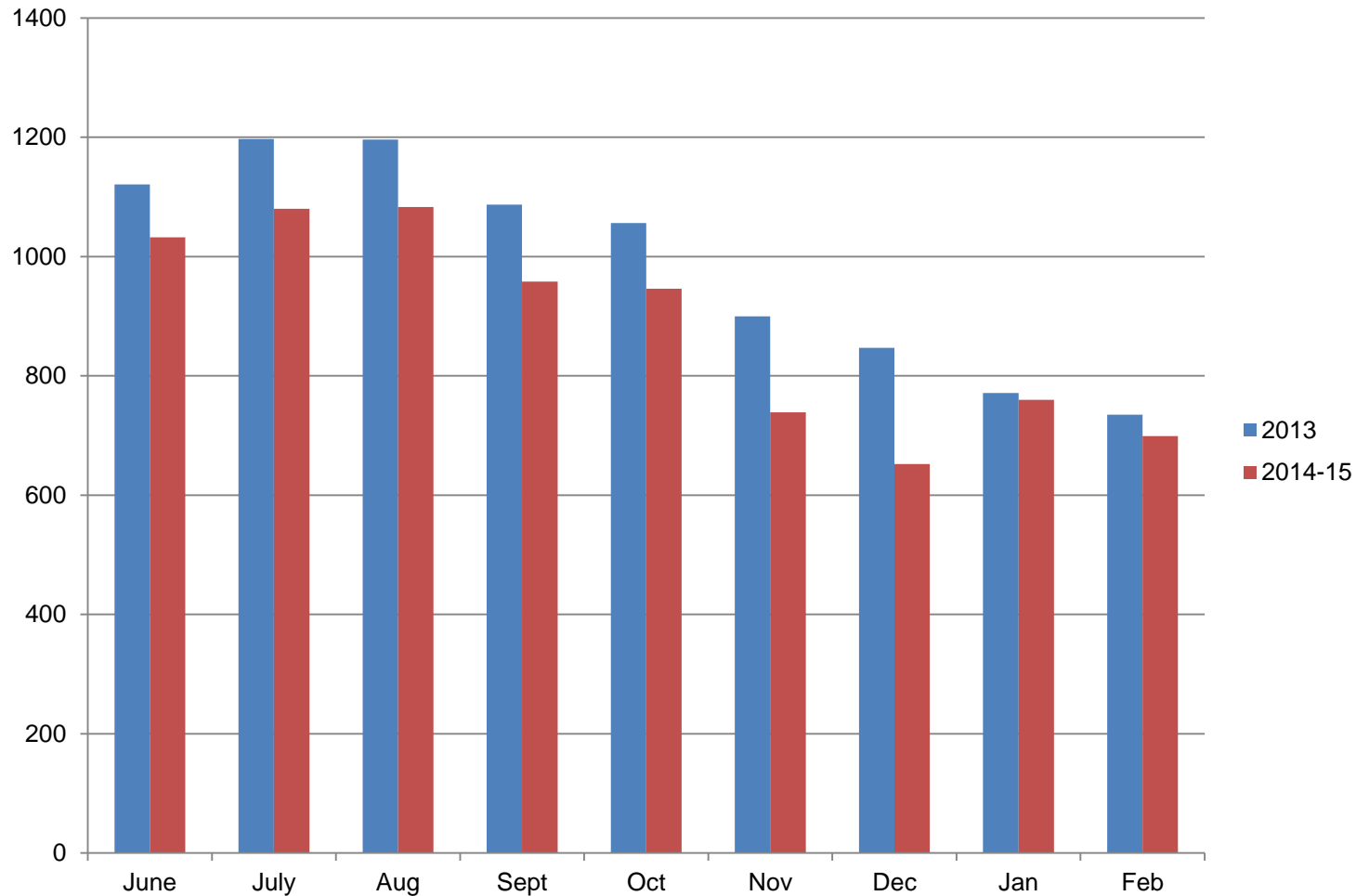
- 
- Small water systems (between 15 and 3,000 customers) must reduce by 25% or limit irrigation to 2 days per week
  - Reporting requirements for all suppliers
  - Enforcement includes fines, informational orders, conservation orders, or cease and desist orders



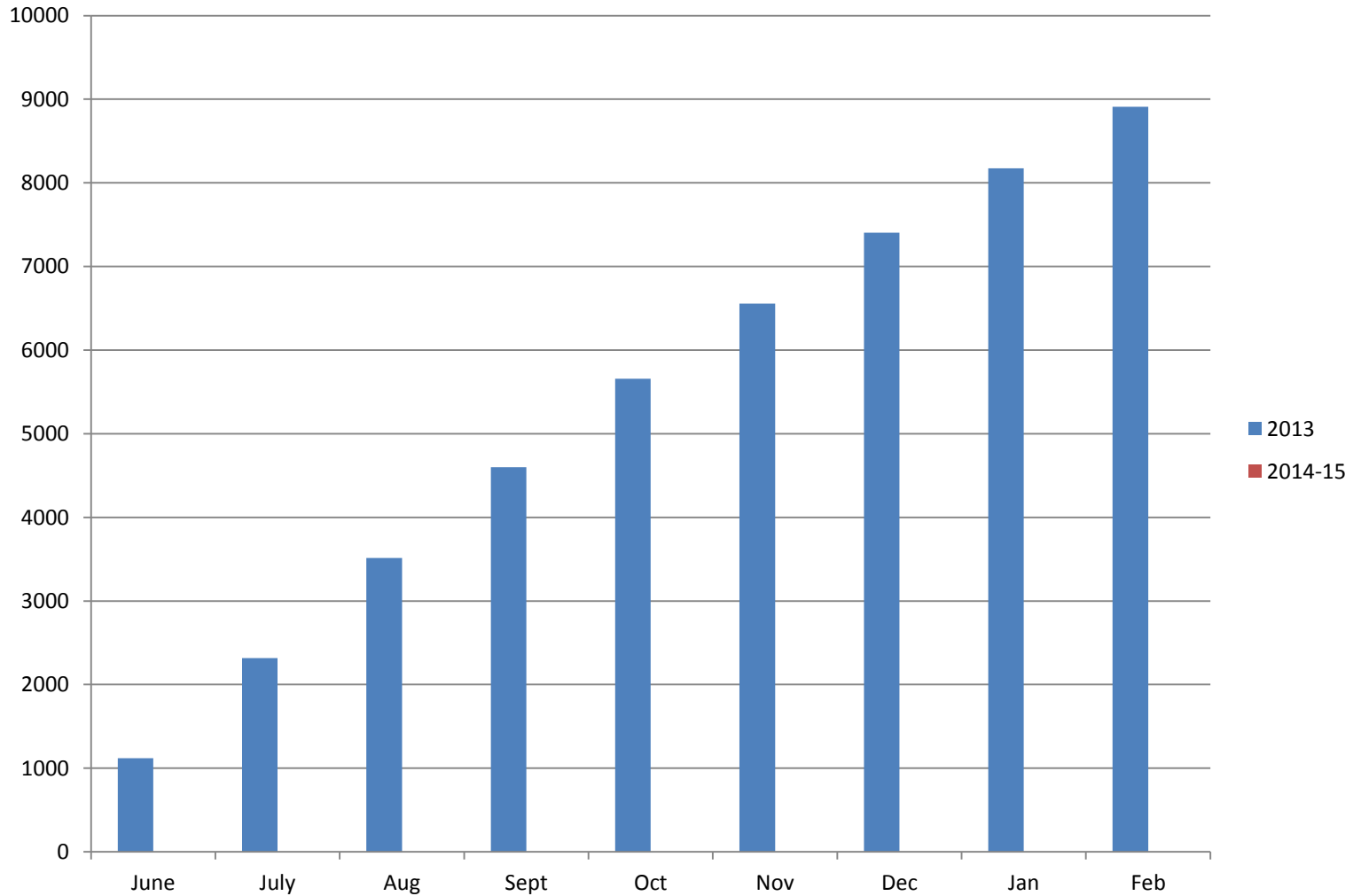
# New Mandatory Conservation Standards Impact on the Monterey Peninsula



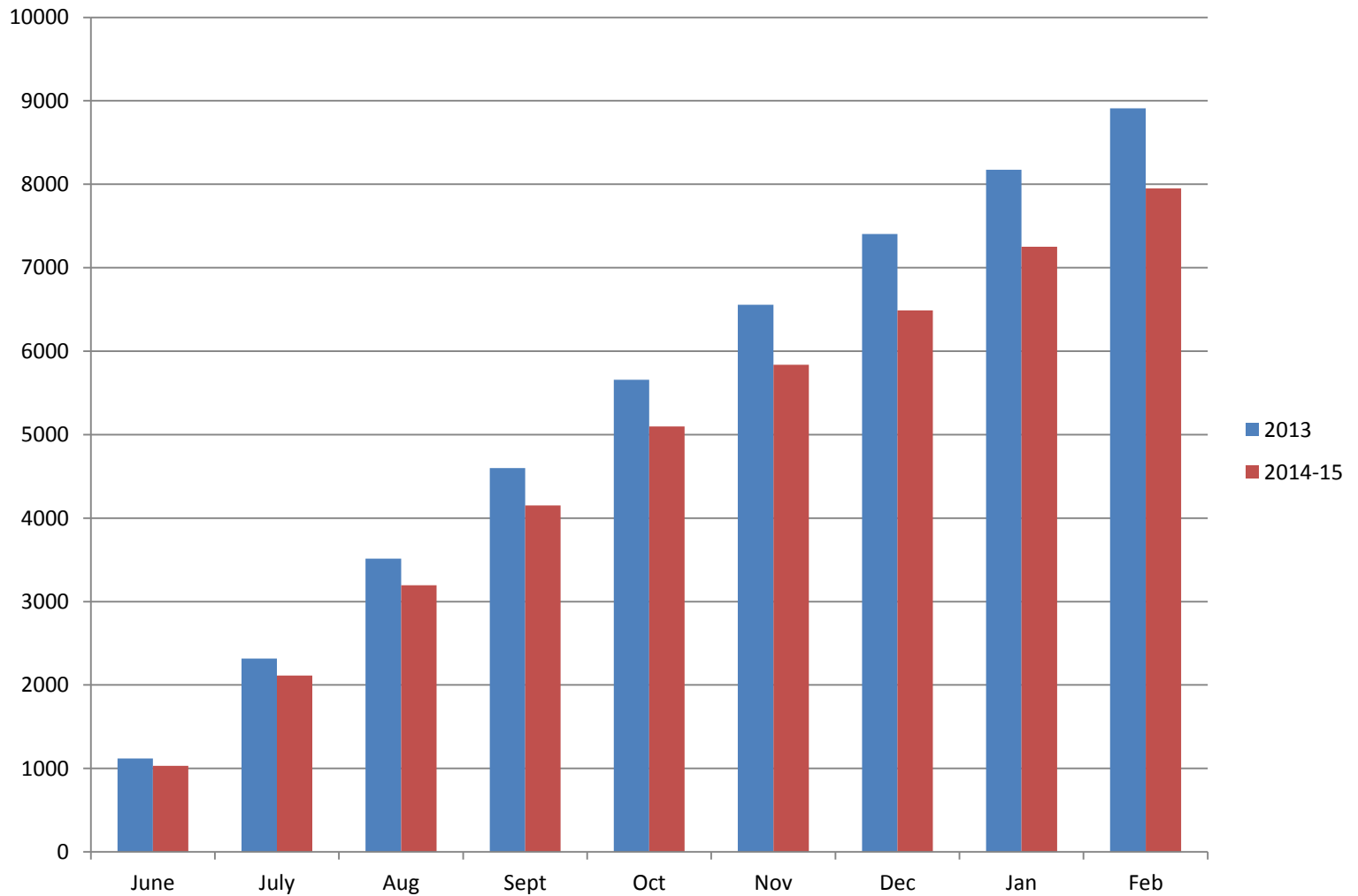
# New Mandatory Conservation Standards Impact on the Monterey Peninsula



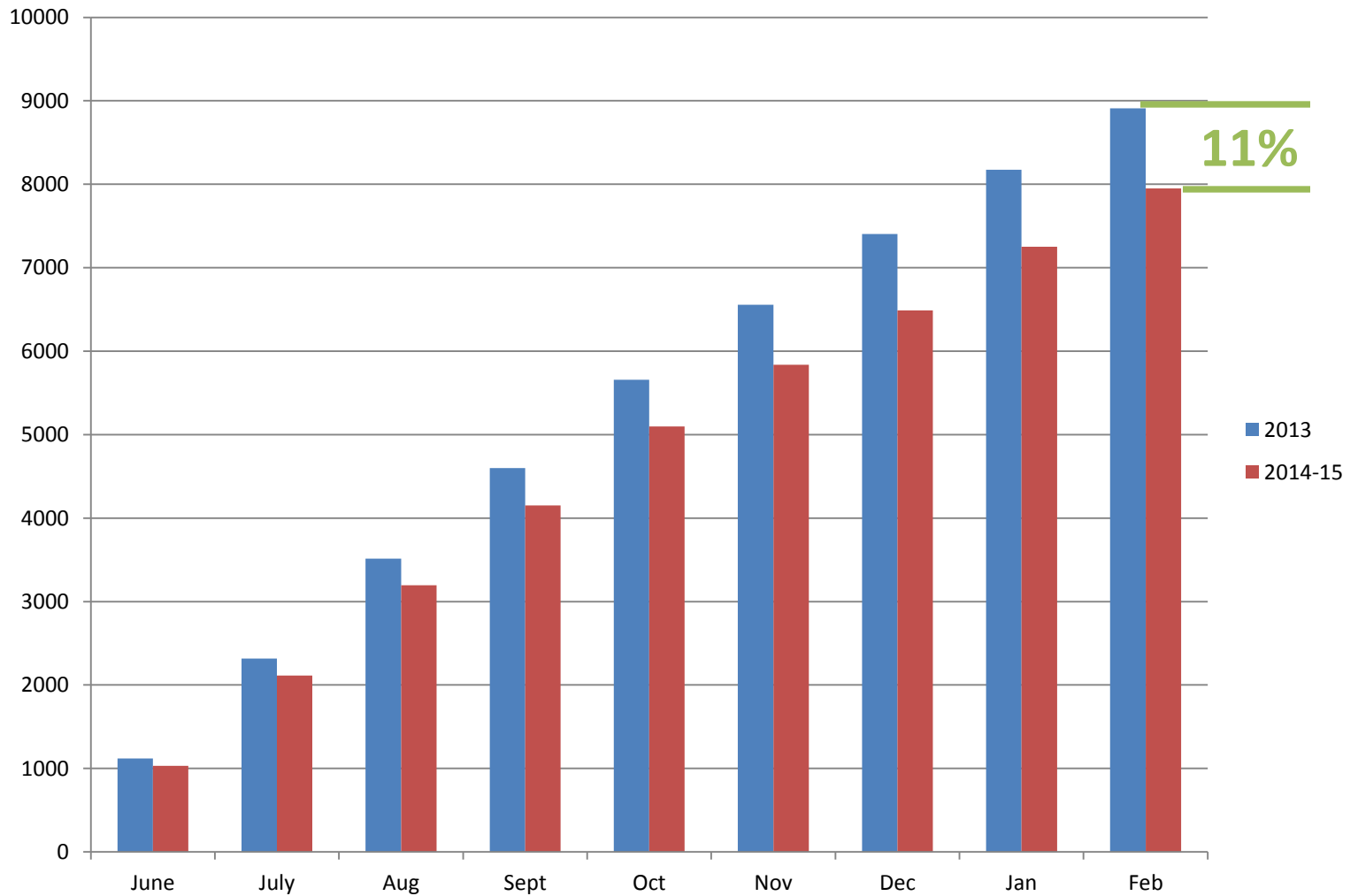
# New Mandatory Conservation Standards Impact on the Monterey Peninsula



# New Mandatory Conservation Standards Impact on the Monterey Peninsula




# New Mandatory Conservation Standards Impact on the Monterey Peninsula





# District Actions In Response

- 
- Adopted revisions to Water Waste Definitions
  - Adopted schedule of fines and penalties
  - Will be proposing amended conservation and rationing plan in May
  - Water waste enforcement (Hotline # 831-658-5653)