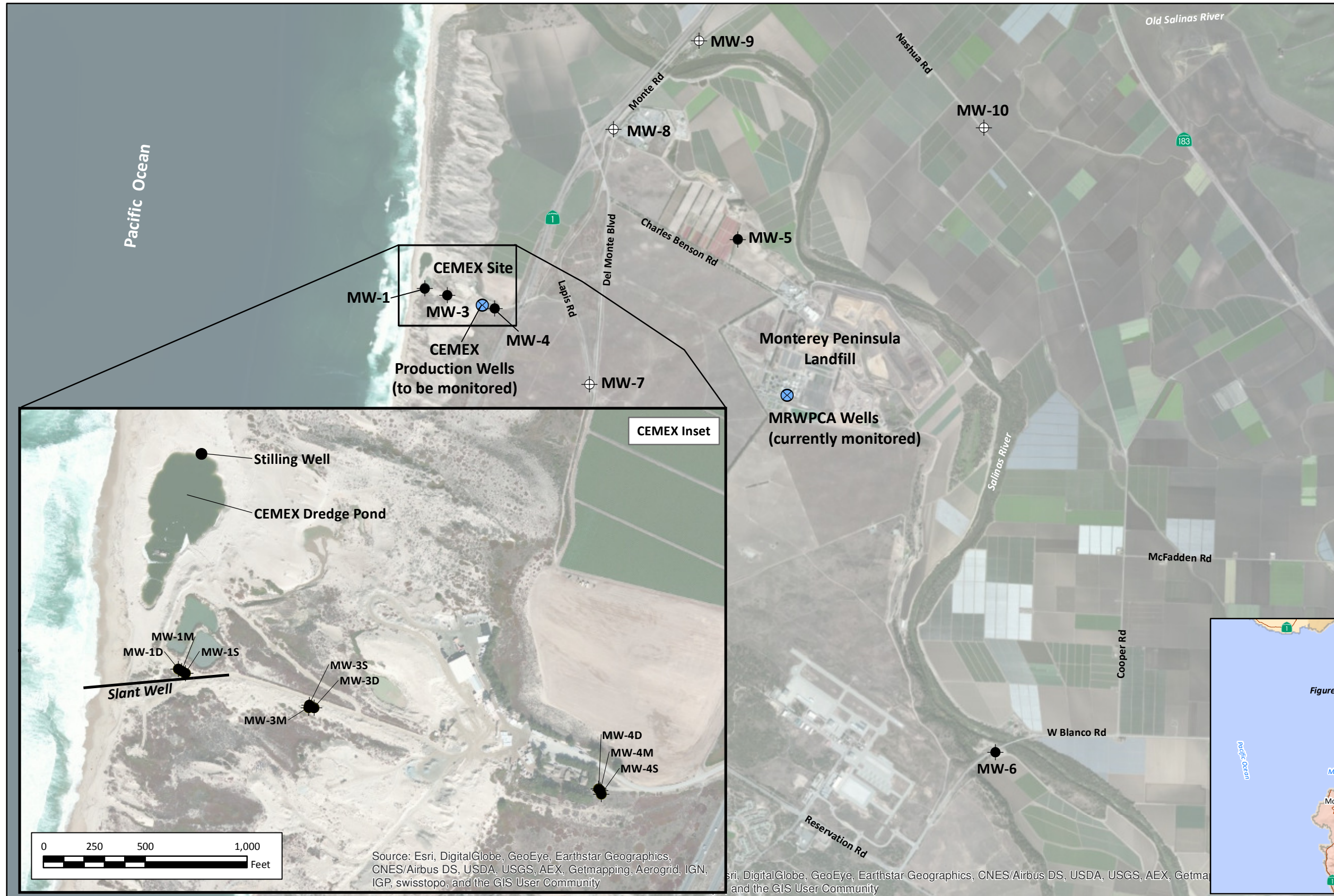


EXHIBIT 8-C

CALIFORNIA AMERICAN WATER

MONTEREY PENINSULA WATER SUPPLY PROJECT

EXISTING AND PROPOSED MONITORING WELL LOCATIONS



- EXPLANATION**
- Existing Monitoring Well Cluster
 - Proposed Monitoring Well Cluster
 - Existing Production Well
 - Slant Well

CEMEX Site

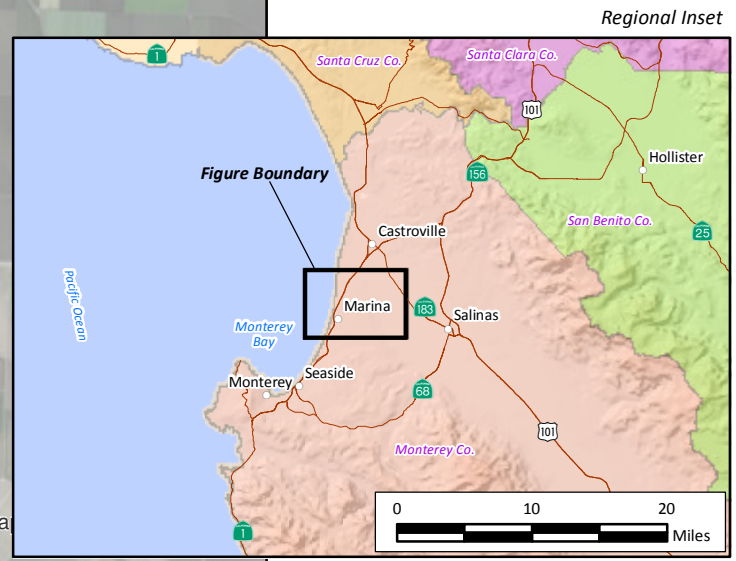
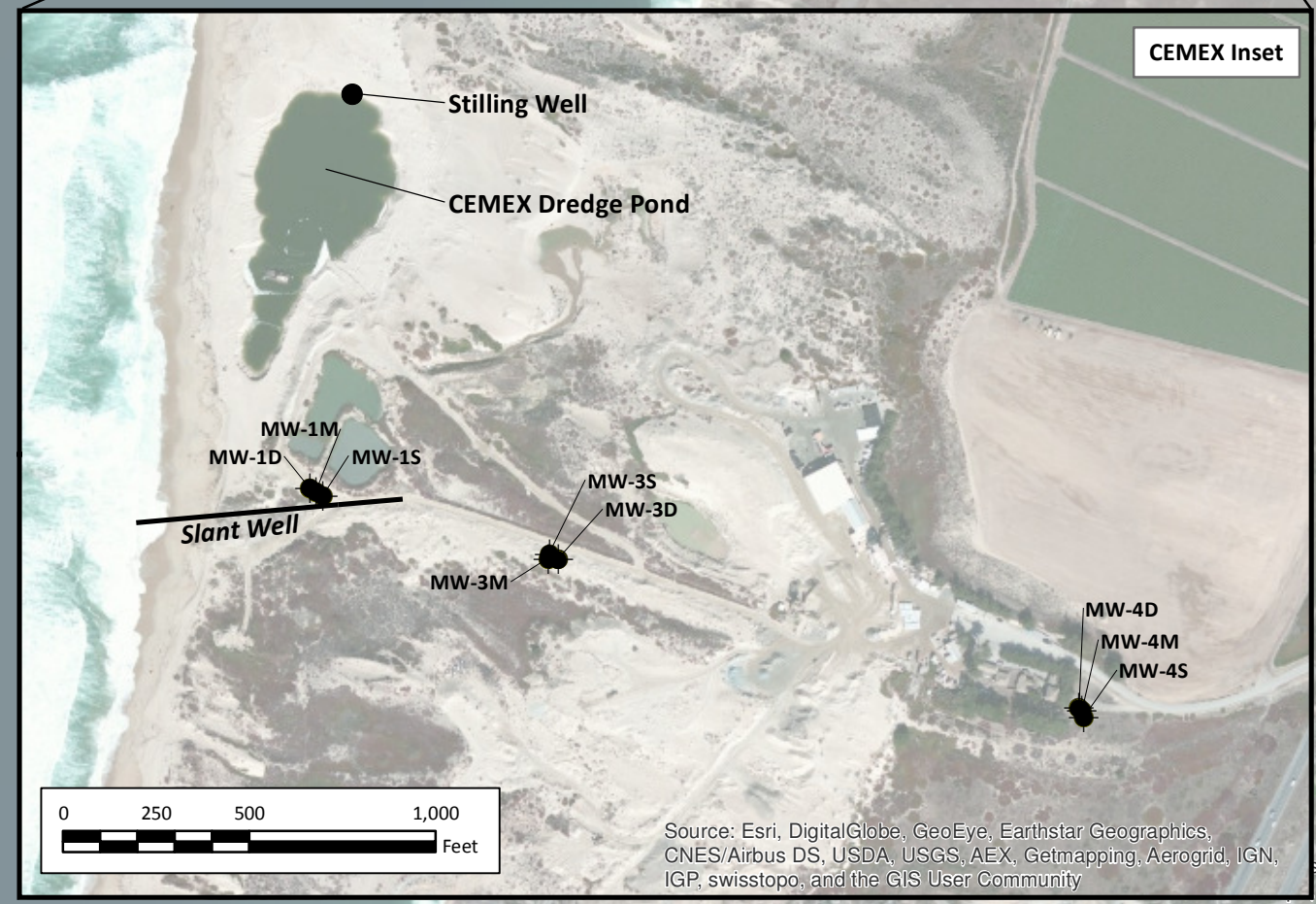
MW-1, MW-3, MW-4

CEMEX Production Wells (to be monitored)

MW-7

Monterey Peninsula Landfill

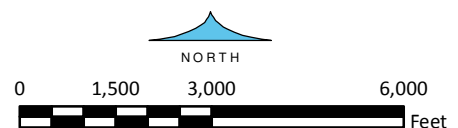
MRWPCA Wells (currently monitored)



Source: Esri, DigitalGlobe, GeoEye, Earthstar Geographics, CNES/Airbus DS, USDA, USGS, AEX, Getmapping, Aerogrid, IGN, IGP, swisstopo, and the GIS User Community

Esri, DigitalGlobe, GeoEye, Earthstar Geographics, CNES/Airbus DS, USDA, USGS, AEX, Getmapping, Aerogrid, IGN, IGP, swisstopo, and the GIS User Community

23-Mar-15
 Prepared by: DWB. Map Projection: State Plane 1983, Zone IV.
 © 2015, GEOSCIENCE Support Services, Inc. All rights reserved.



GEOSCIENCE
 GEOSCIENCE Support Services, Inc.
 P.O. Box 220, Claremont, CA 91711
 Tel: (909) 451-6650 Fax: (909) 451-6638
 www.gssiwater.com

Figure 1

EXHIBIT 8-C

Groundwater Elevation in MPWSP MW-1

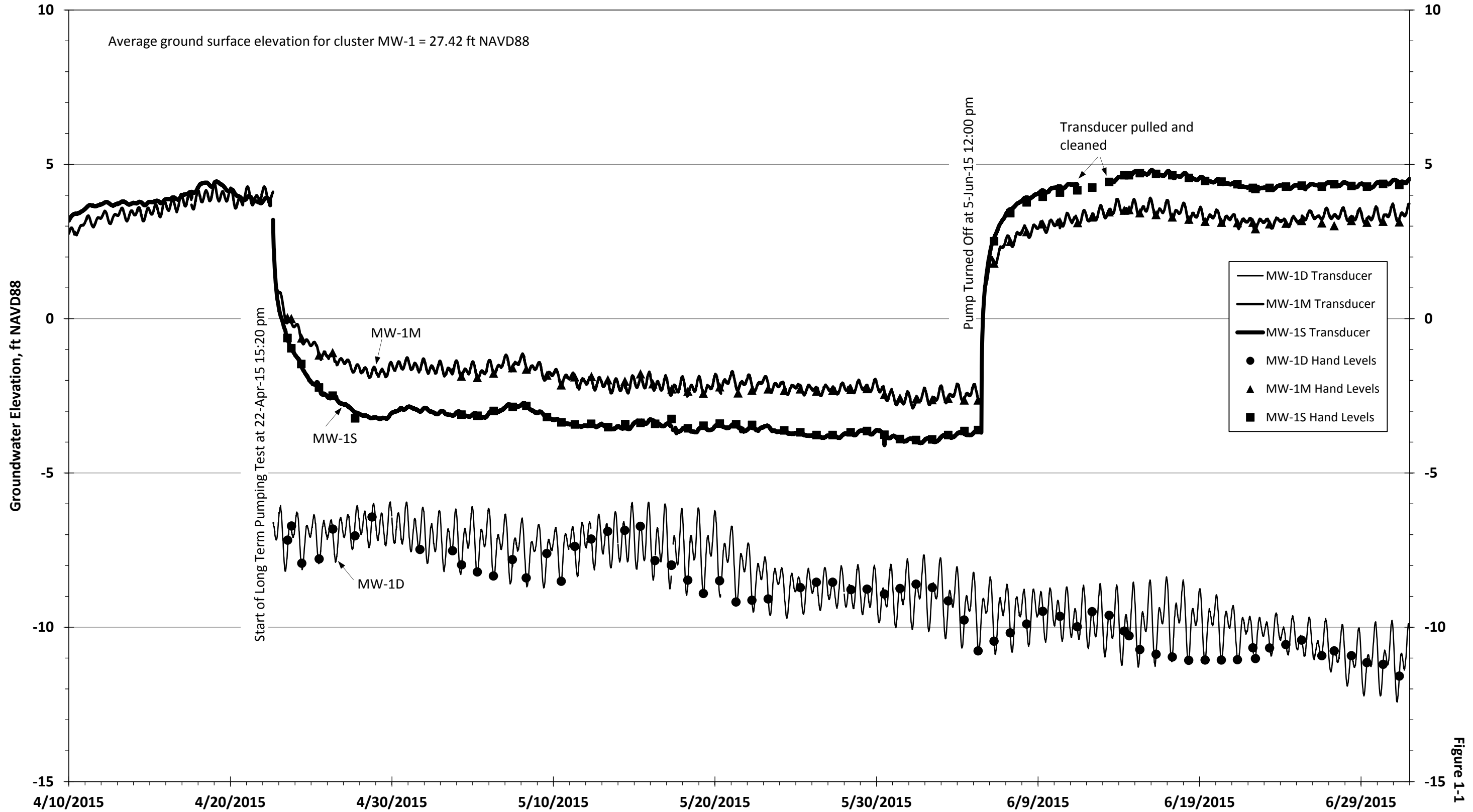


Figure 1-1

EXHIBIT 8-C

Groundwater Elevation in MPWSP MW-3

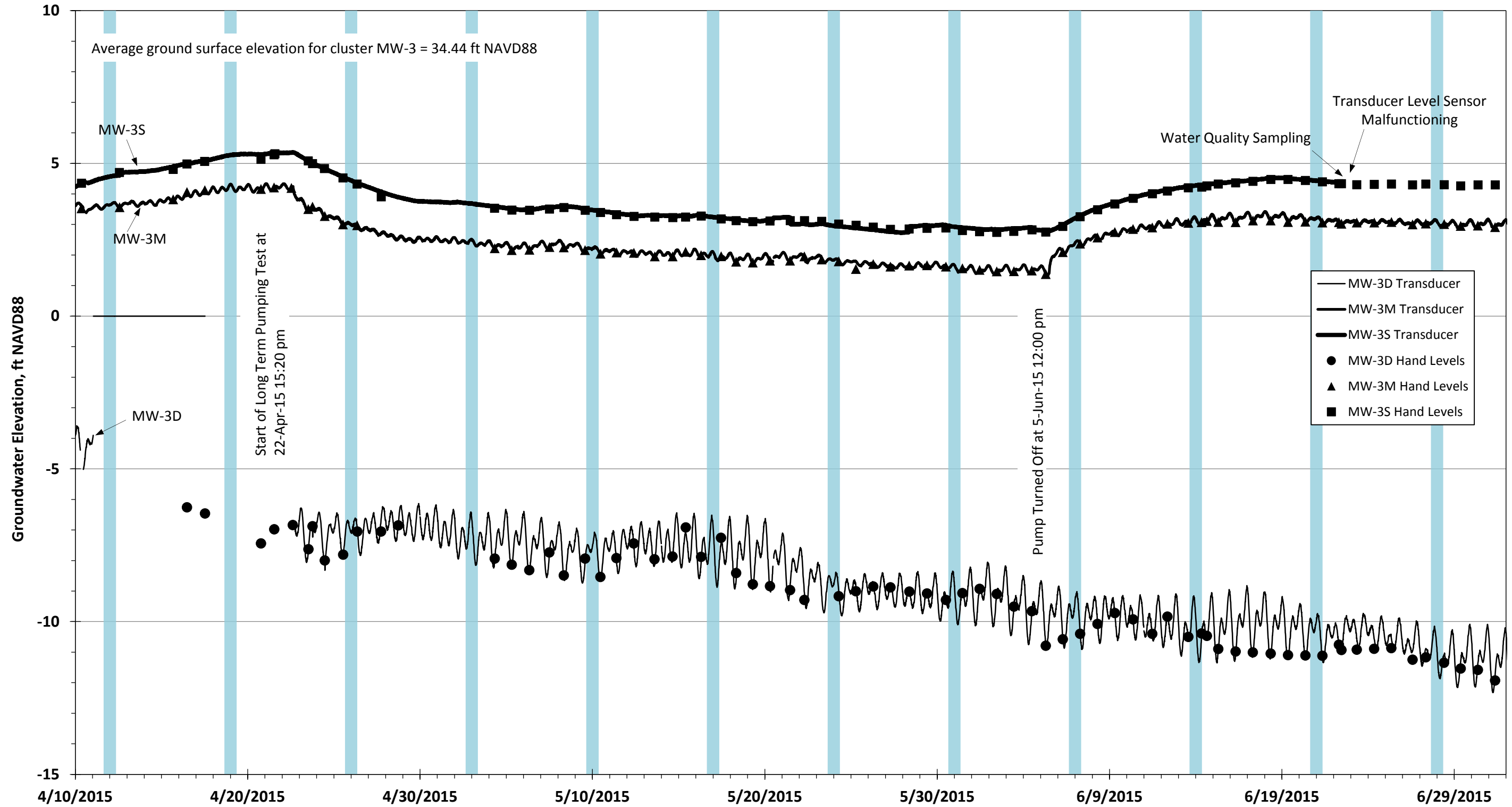


Figure 1-2

EXHIBIT 8-C

Groundwater Elevation in MPWSP MW-4

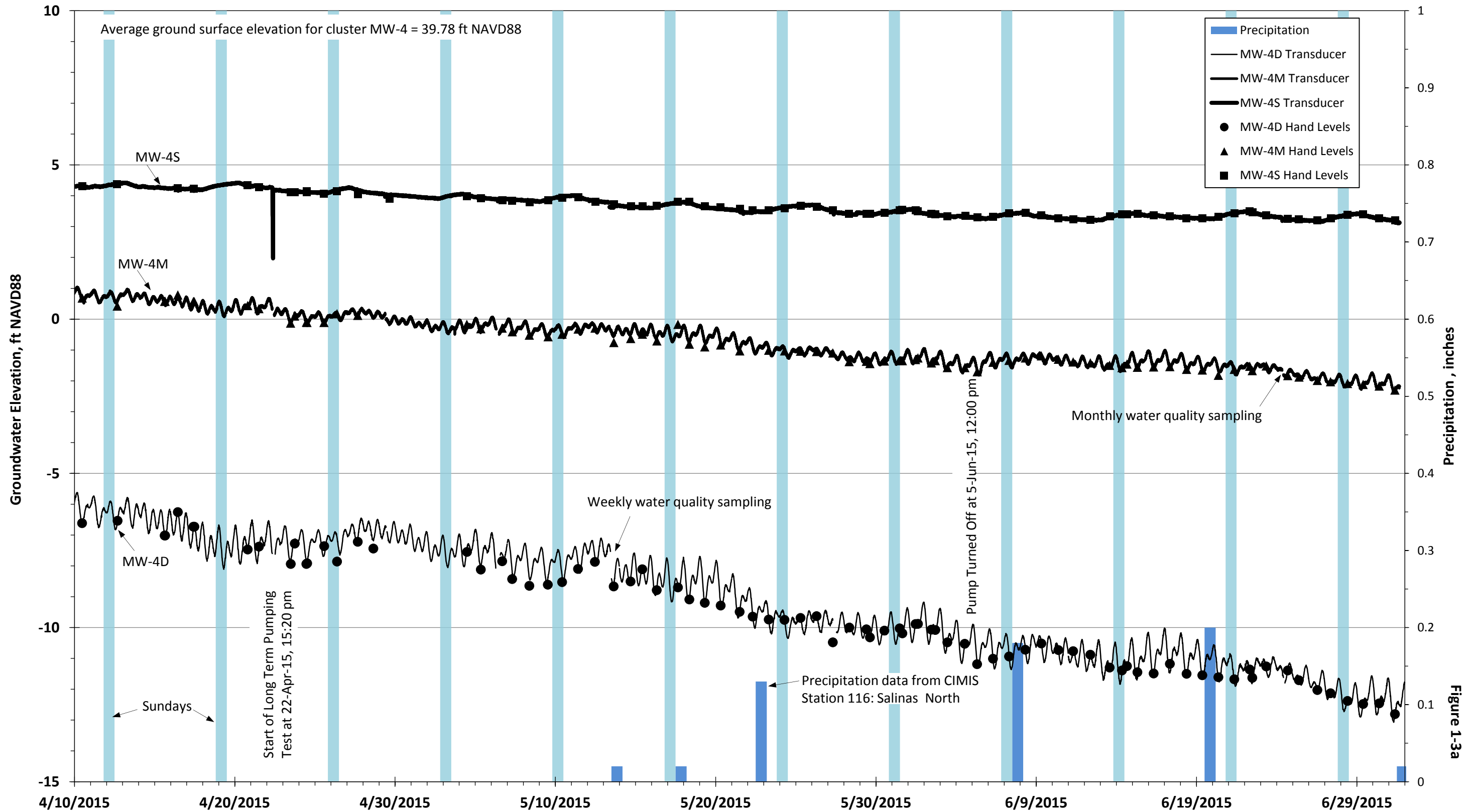


Figure 1-3a