

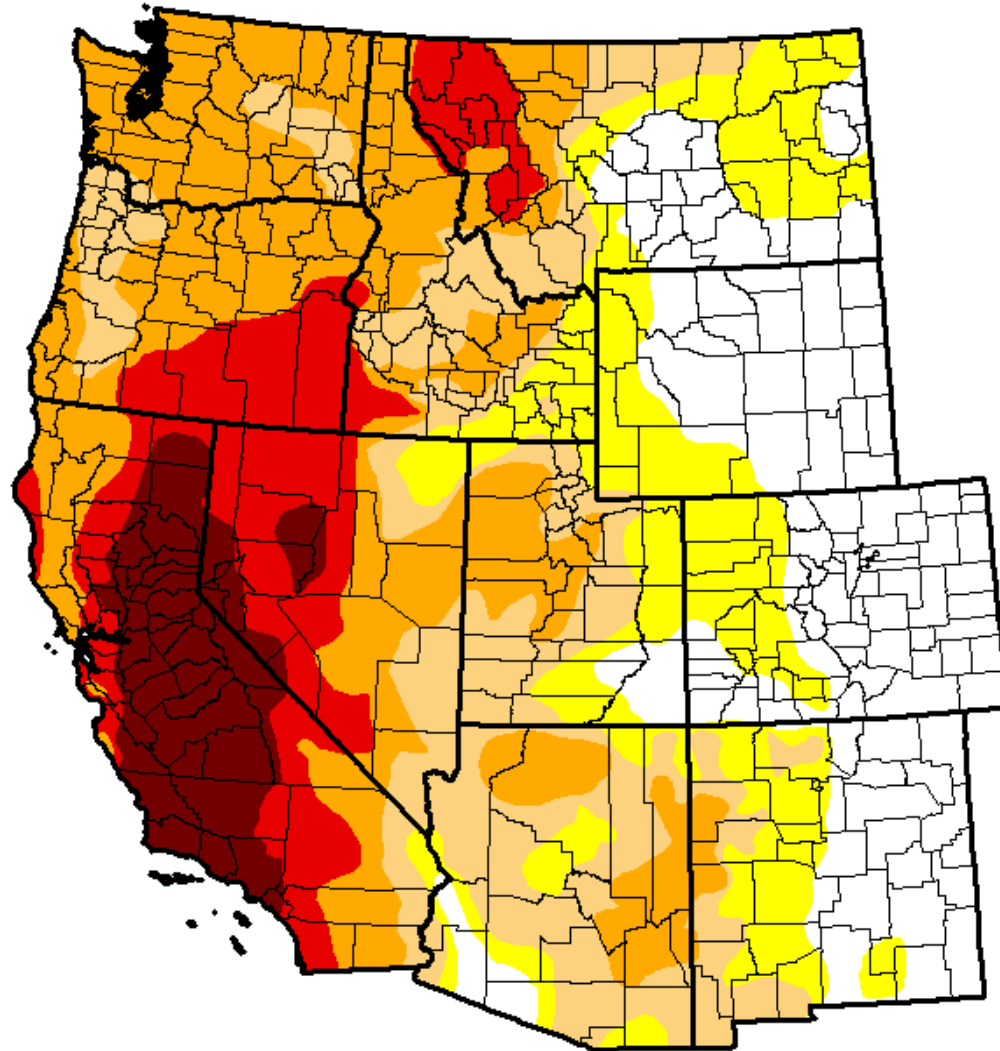


# Drought Update

*July 2015*

# Drought Monitor – Western States

July 7, 2015

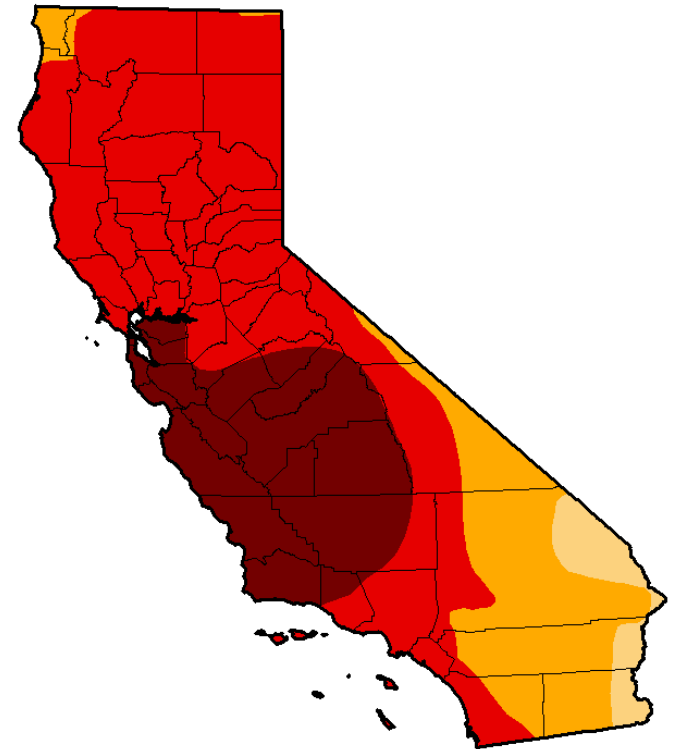
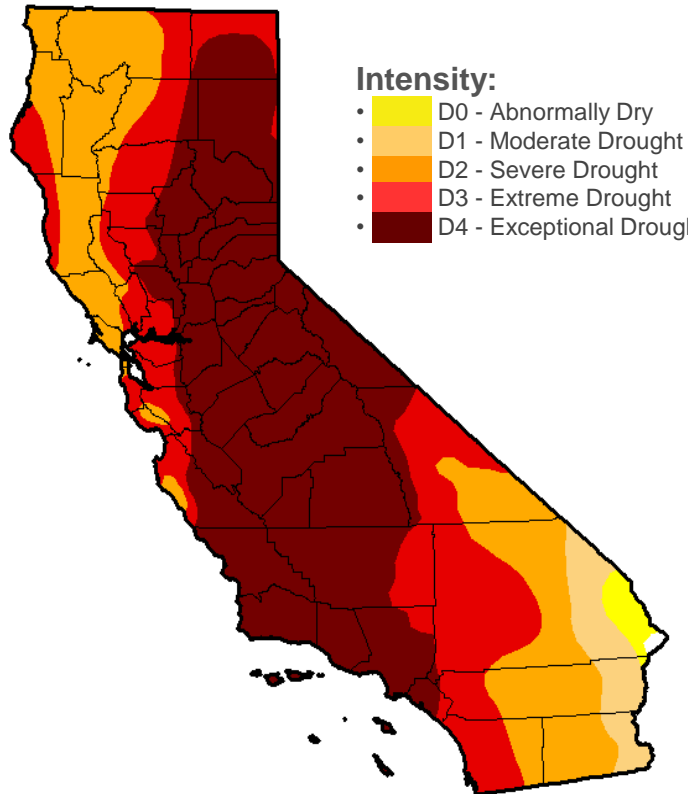


# Drought Monitor – California

## July 7, 2015

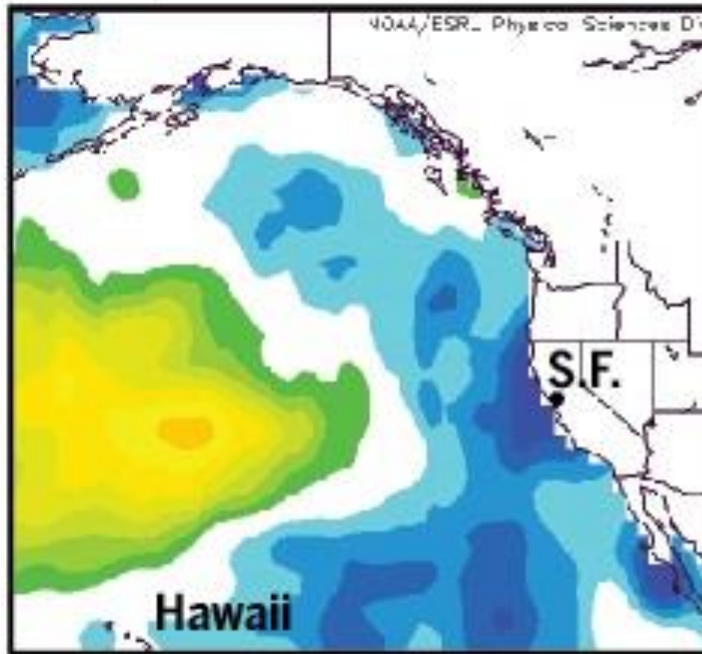
Today

1 Year Ago

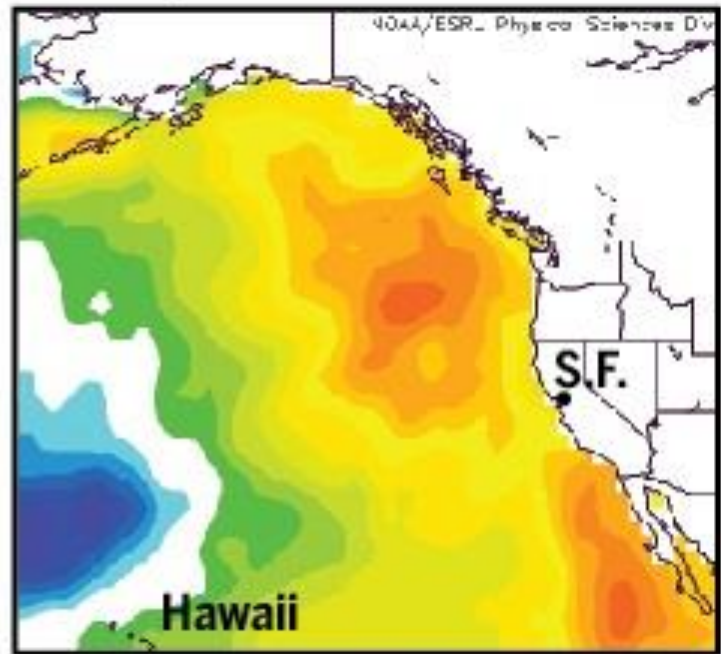


# Ocean Surface Temperature Change Feb - April

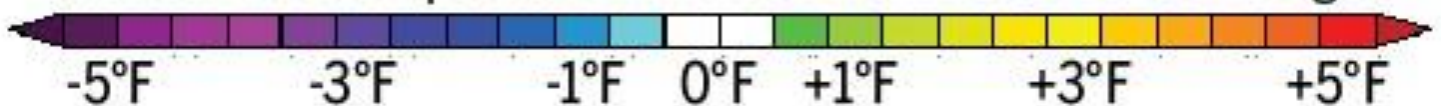
**Feb.-April 2013**



**Feb.-April 2015**



Sea surface temperature variation from 1981-2010 average



# Ocean Surface Temperature Change

- West Coast over the past year has grown to the biggest and longest-lasting ocean temperature anomaly on record
- Unusually slack winds are to blame for the warming ocean off the West Coast
- In August last year, a temperature sensor in Monterey Bay picked up its highest temperature reading ever recorded
- More stranded California sea lions and northern elephant seals than average

# Waiting for El Nino Sea Surface Temperature Anomalies

SST Anomalies (°C)

01 JUL 2015

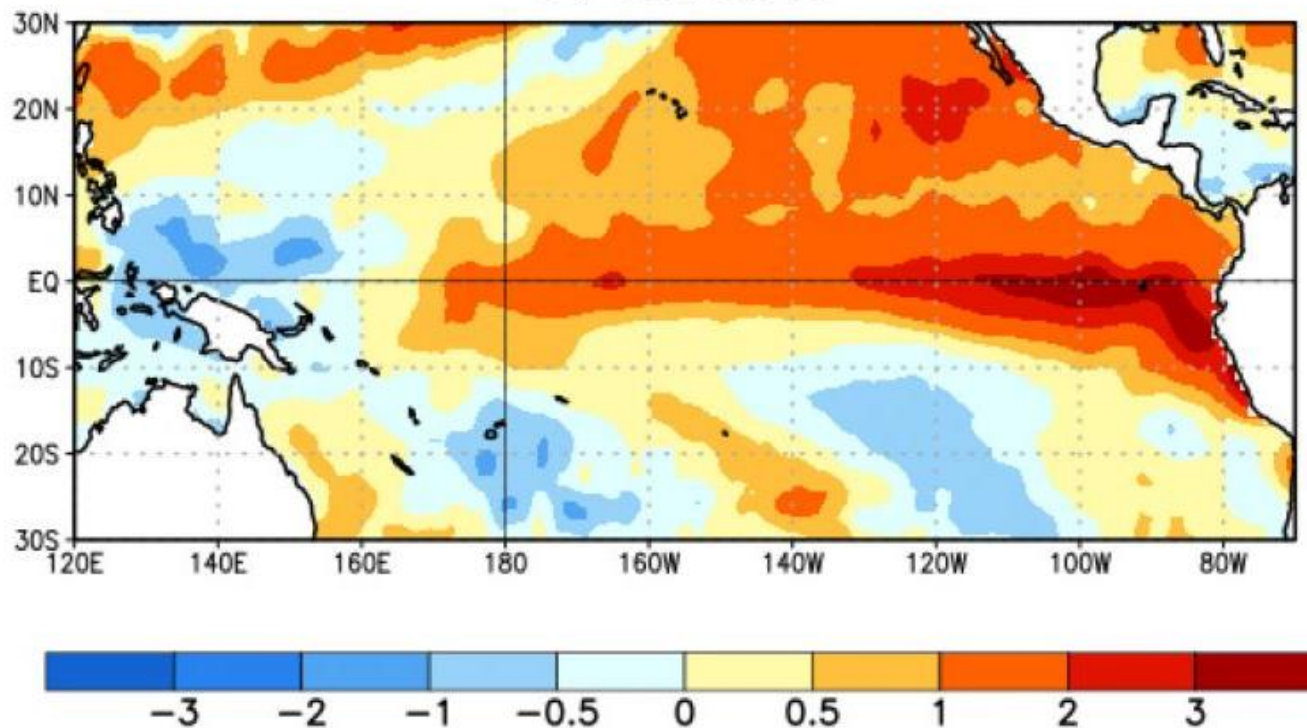


Figure 1. Average sea surface temperature (SST) anomalies (°C) for the week centered on 1 July 2015. Anomalies are computed with respect to the 1981-2010 base period weekly means.

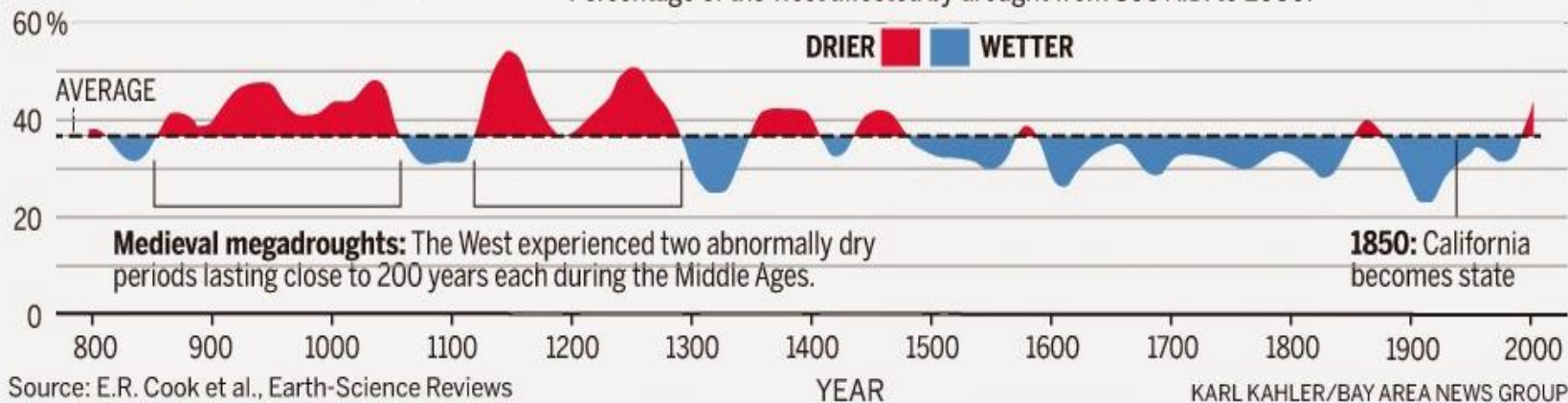
# Waiting for El Niño

In early July, the U.S. Climate Prediction Center reported that telltale signs of El Niño, which include warming sea surface temperatures and emerging equatorial winds, bore close resemblance to conditions preceding some of the strongest El Niños in recent history

# Long Term Predictions?

## A 200-year drought?

Evidence from tree rings shows that drought was historically much more widespread in the American West than now, while the 20th century was wetter than normal. Percentage of the West affected by drought from 800 A.D. to 2000:

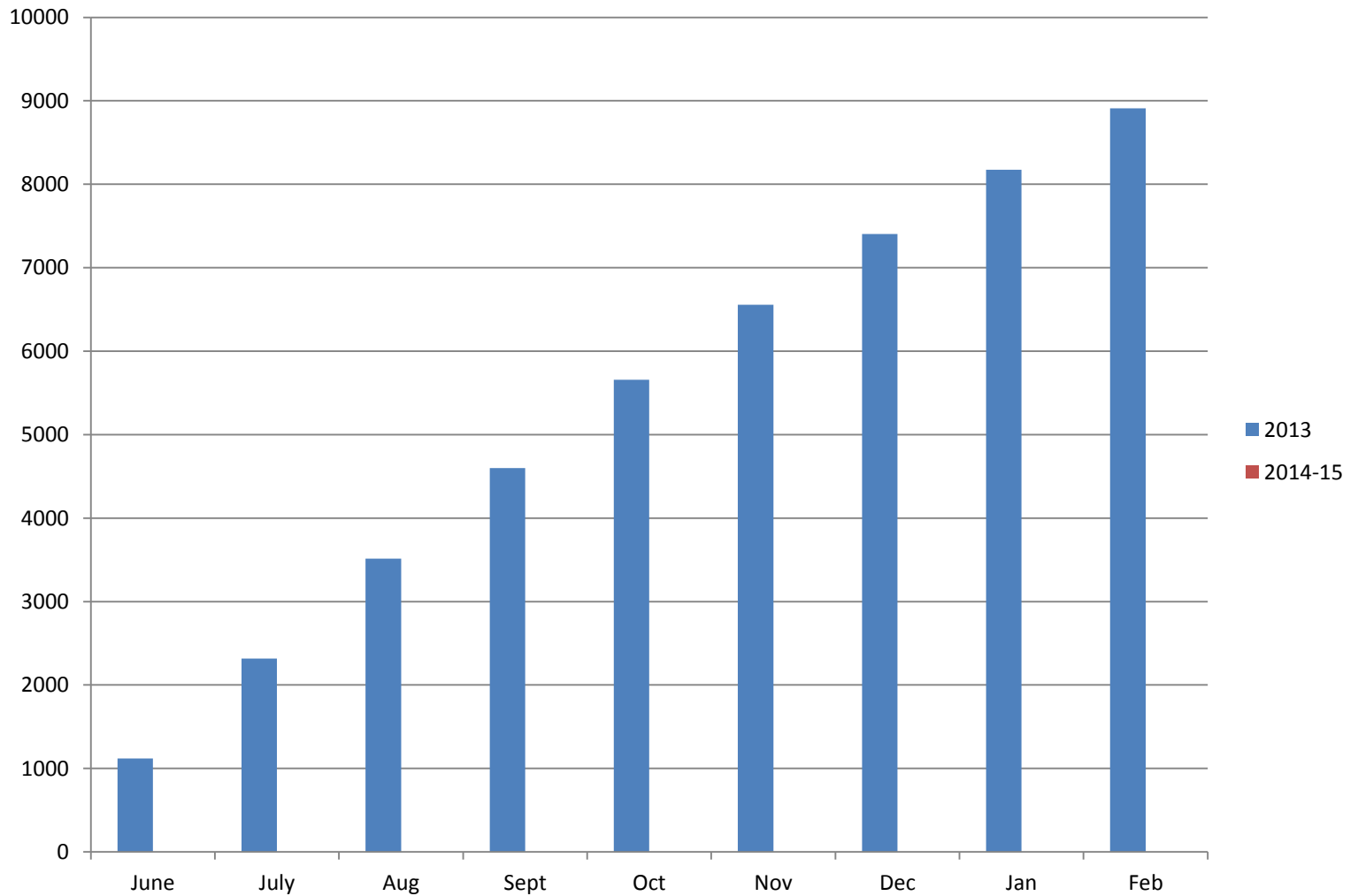




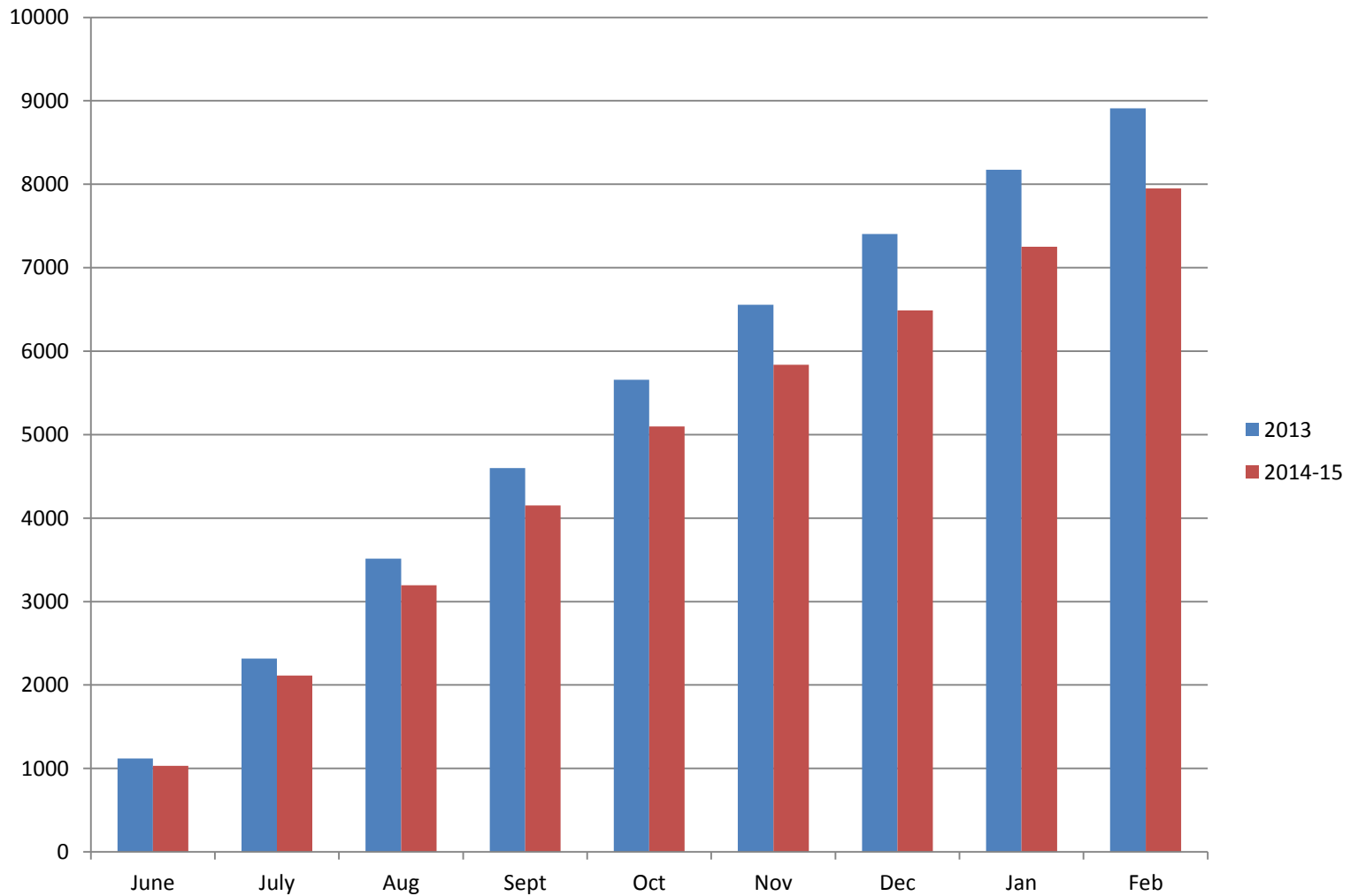
# New Mandatory Conservation Standards

Category	Range GPCD	Reduction Required	#	Example Community And GPCD
1	Reserved	4%	0	
2	< 65	8%	23	Monterey Peninsula (51.3)
3	65 – 79	12%	24	Santa Ana (78.3)
4	80 – 94	16%	44	Sunnyvale (85.2)
5	95—109	20%	51	Watsonville (100.3)
6	110 – 129	24%	48	Chino (126.7)
7	130 – 169	28%	82	Morgan Hill (161.3)
8	170 – 214	32%	54	Suburban Sacramento (222.5)
9	> 215	36%	85	Palm Springs (416.0)

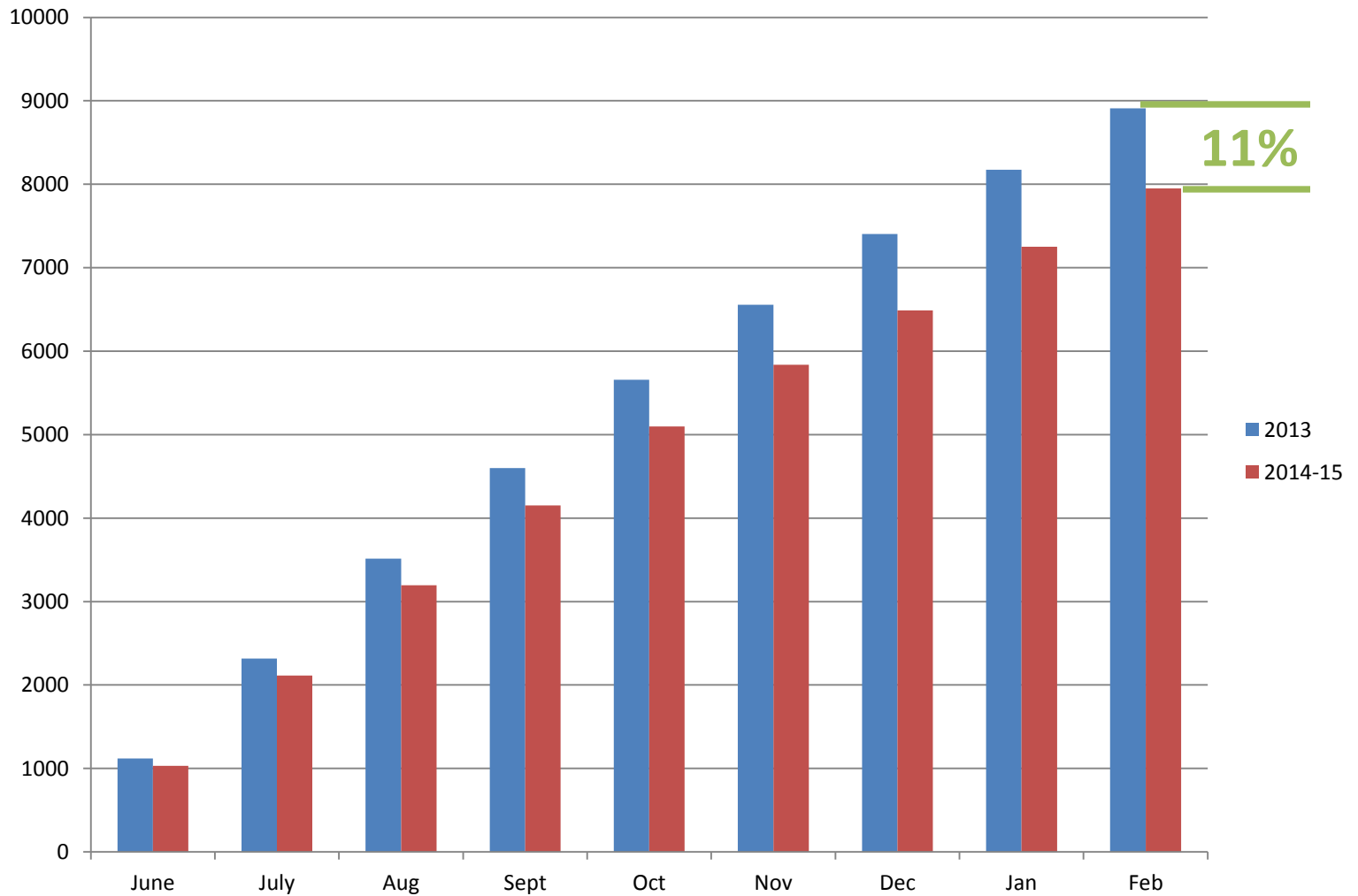
# New Mandatory Conservation Standards Impact on the Monterey Peninsula



# New Mandatory Conservation Standards Impact on the Monterey Peninsula



# New Mandatory Conservation Standards Impact on the Monterey Peninsula



# How Are We Doing So Far?

