



## General Manager's Report Item 8:

Status Report on Cal-Am Compliance  
with SWRCB Orders and Seaside Basin  
Decision as of August 1, 2015

*Meeting Date: August 17, 2015*

*Staff contact: David J. Stoldt*

# Actual versus Target Production for Cal-Am: August 2015 (All Values in Acre-Feet)

Year-to-Date Values	Carmel River Basin	Seaside Groundwater Basin		Water Projects		MPWRS Total
		Coastal	Laguna Seca	ASR Projects	Sand City	
Target	8,117	1,401	38	0	250	9,806
Actual	5,749	1,913	262	0	196	8,120
Difference	2,368	-512	-224	0	54	1,686

**Notes:**

1. “Sand City” refers to the Sand City Desalination Facility, which pumps brackish water from the Seaside Groundwater Basin as source water. The Sand City values refer to yield from the facility.
2. “ASR Projects” refers to the Phase 1 and 2 Aquifer Storage and Recovery (ASR) Project and the values refer to the amount of stored water recovered for customer service.
3. “MPWRS” refers to Monterey Peninsula Water Resource System.
4. Carmel River Basin Target reflects assumed annual production of 300 AF from Sand City.
5. Production numbers are estimated pending finalization of CAW production data.
6. Carmel River Basin target represents quarterly adjustments based on differences between budgeted values and actual production from other sources.

# Actual versus Target Production for Cal-Am: August 2015 (All Values in Acre-Feet)

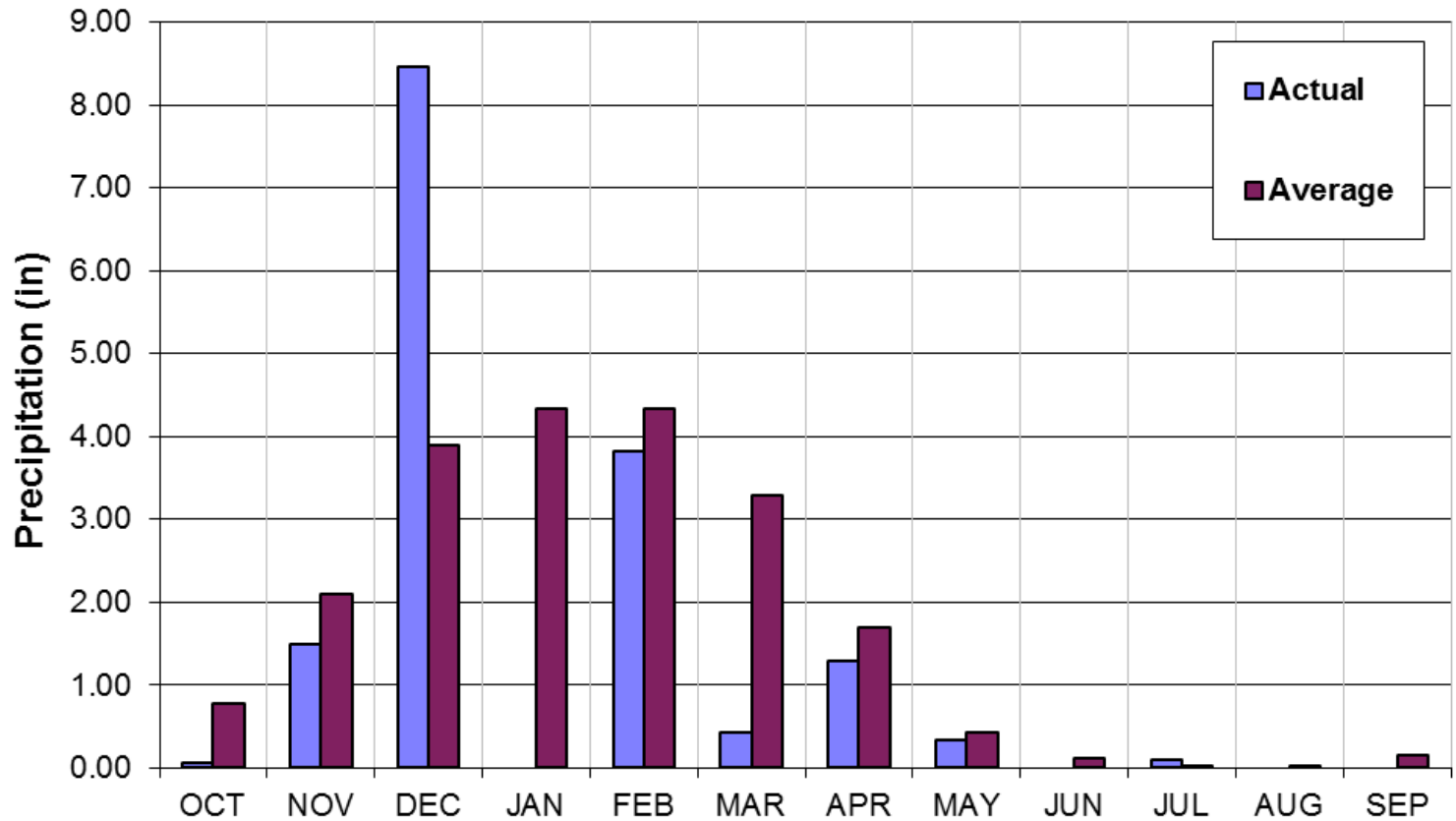
Year-to-Date Values	Carmel River Basin	Seaside Groundwater Basin		Water Projects		MPWRS Total
		Coastal	Laguna Seca	ASR Projects	Sand City	
Target	8,117	1,401	38	0	250	9,806
Actual	5,749 <b>7,089</b>	1,913	262	0	196	8,120 <b>10,197</b>
Difference	2,368	<b>-512</b>	<b>-224</b>	0	54	1,686

**20% Lower  
than last year**

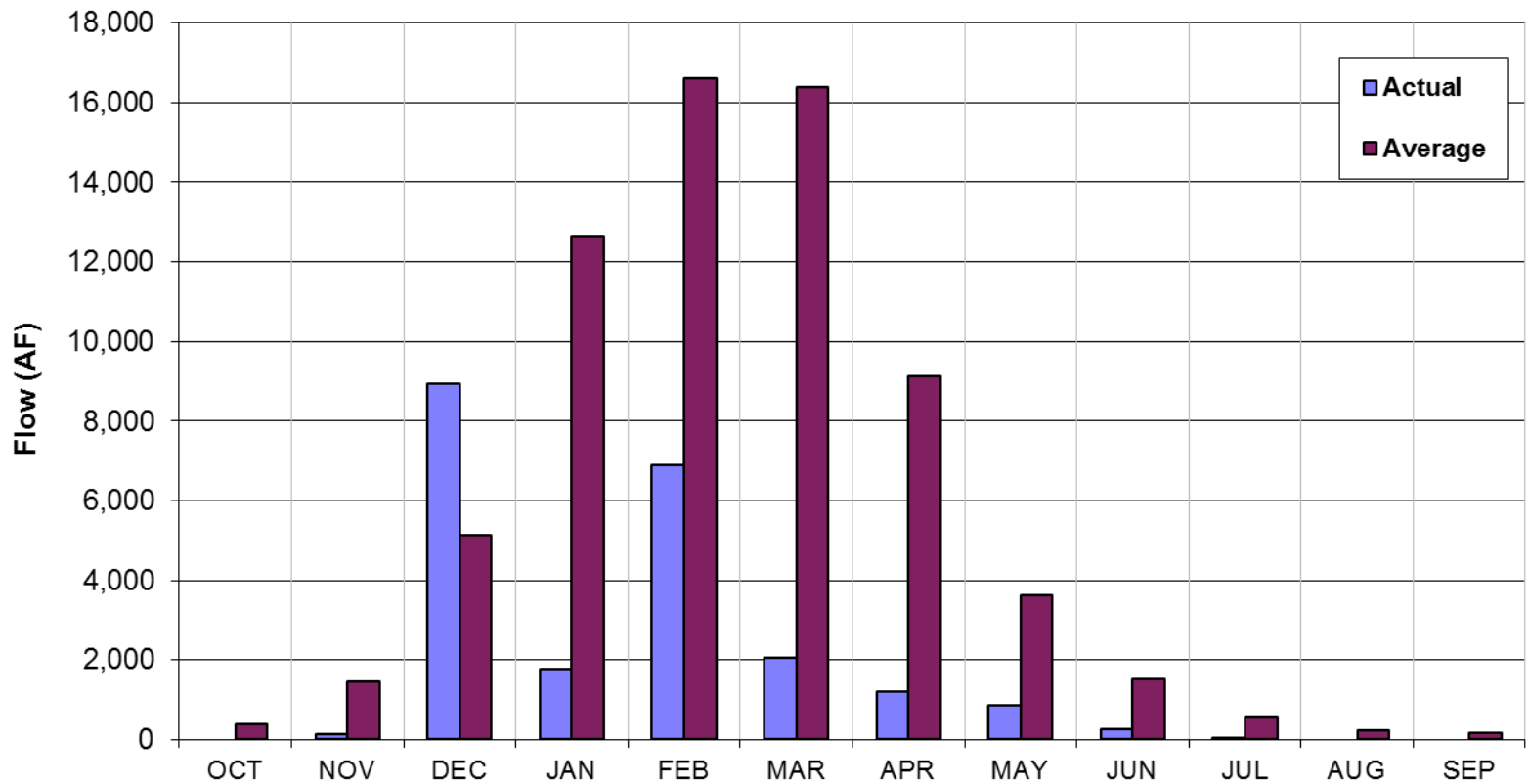
**Notes:**

1. “Sand City” refers to the Sand City Desalination Facility, which pumps brackish water from the Seaside Groundwater Basin as source water. The Sand City values refer to yield from the facility.
2. “ASR Projects” refers to the Phase 1 and 2 Aquifer Storage and Recovery (ASR) Project and the values refer to the amount of stored water recovered for customer service.
3. “MPWRS” refers to Monterey Peninsula Water Resource System.
4. Carmel River Basin Target reflects assumed annual production of 300 AF from Sand City.
5. Production numbers are estimated pending finalization of CAW production data.
6. Carmel River Basin target represents quarterly adjustments based on differences between budgeted values and actual production from other sources.

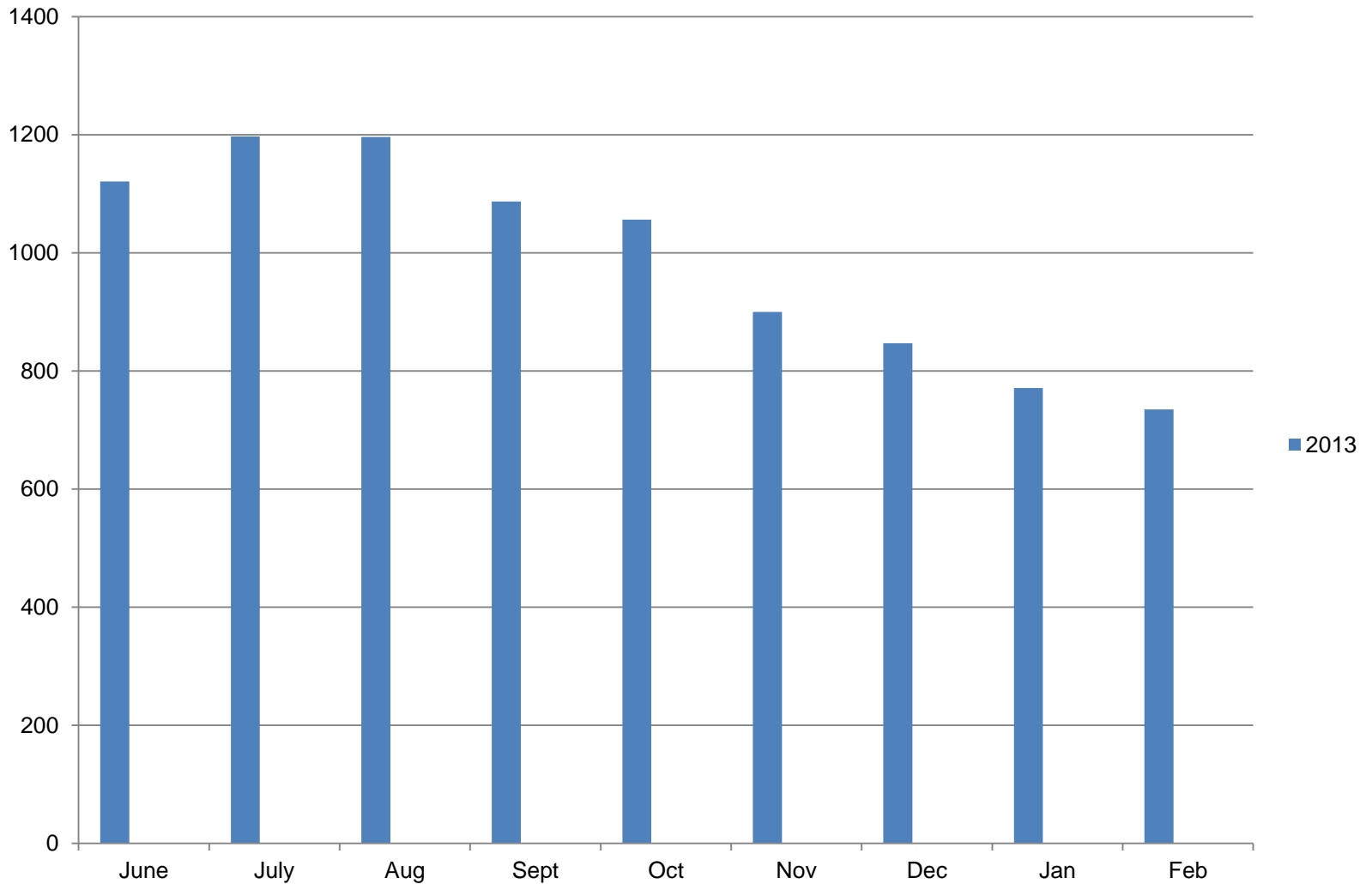
# Recorded Rainfall at San Clemente Dam: Water Year 2015



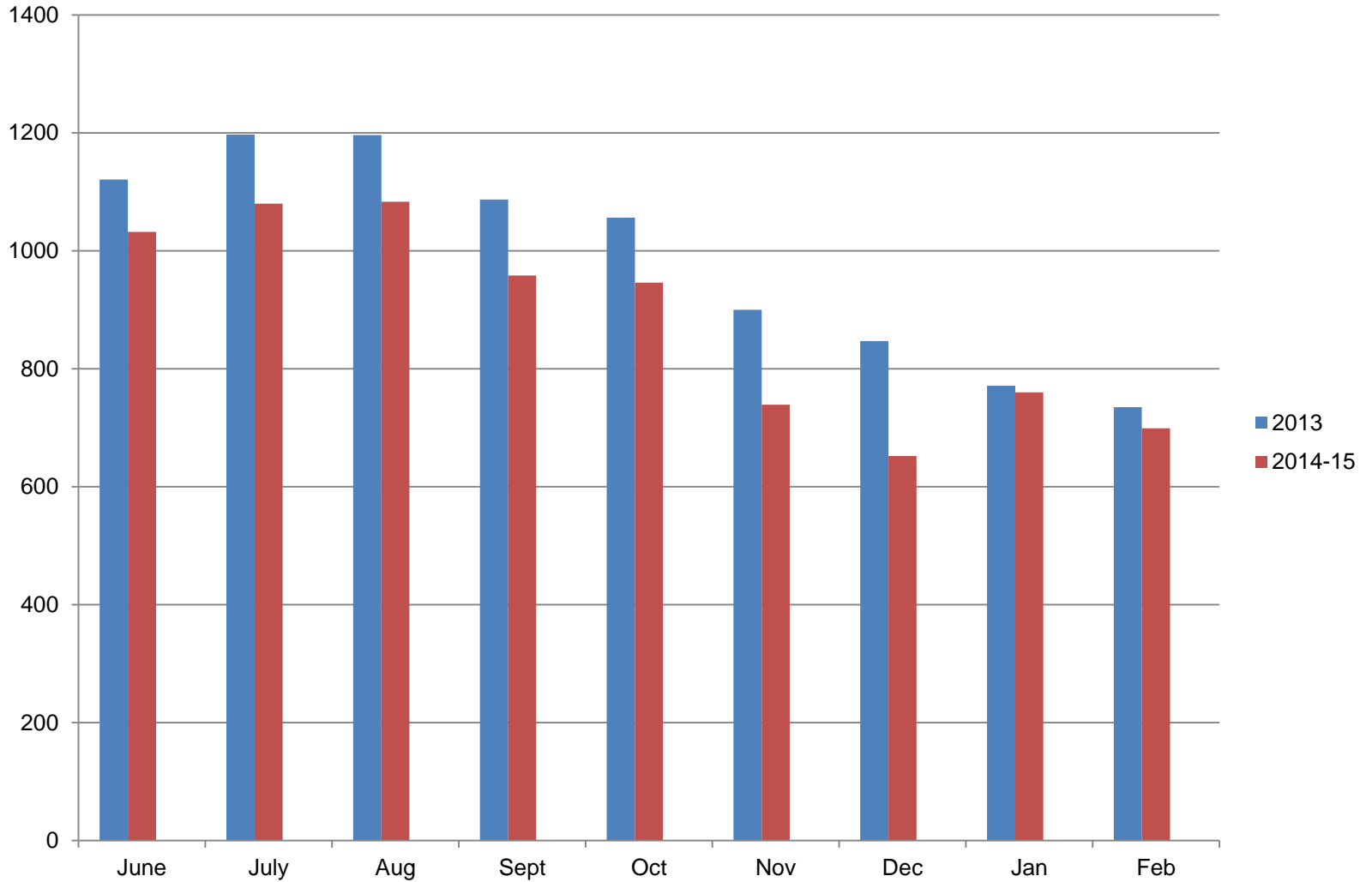
# Estimated Unimpaired Carmel River Flow at San Clemente Dam: Water Year 2015



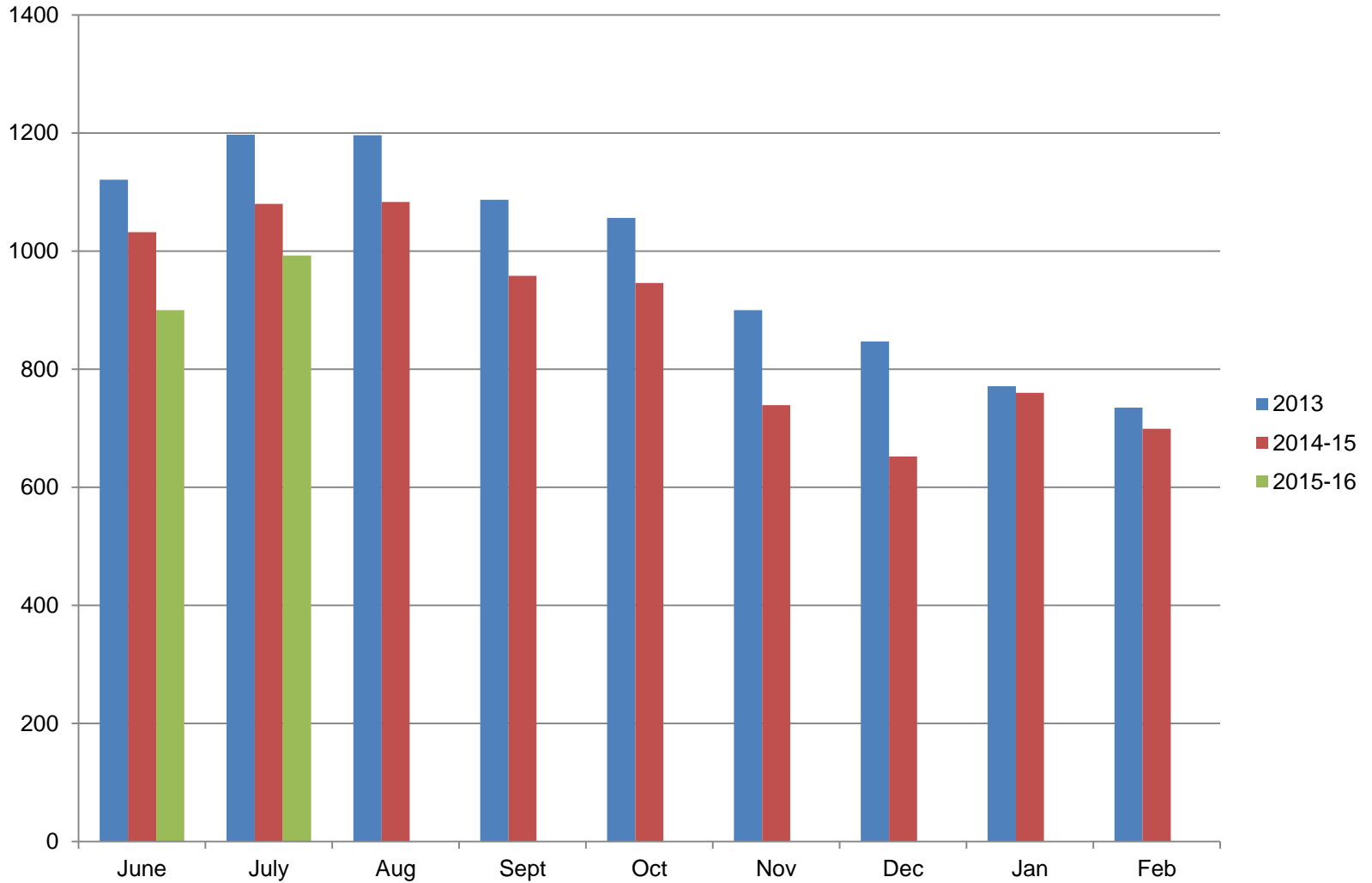
# New Mandatory Conservation Standards Monterey Peninsula 2013 Target Year



# Last Year's Performance

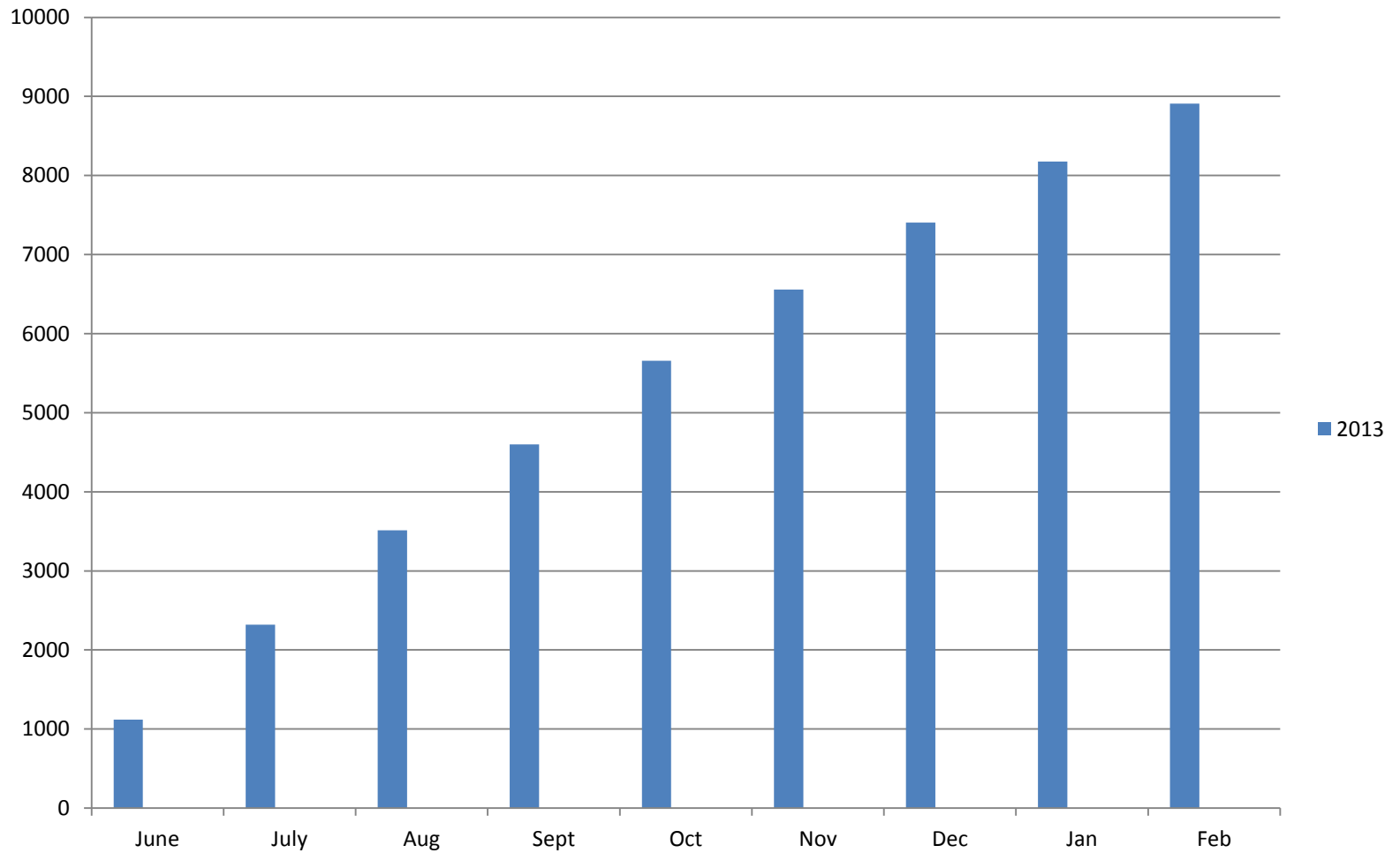


# The 2015 Sweepstakes: How Are We Doing So Far?

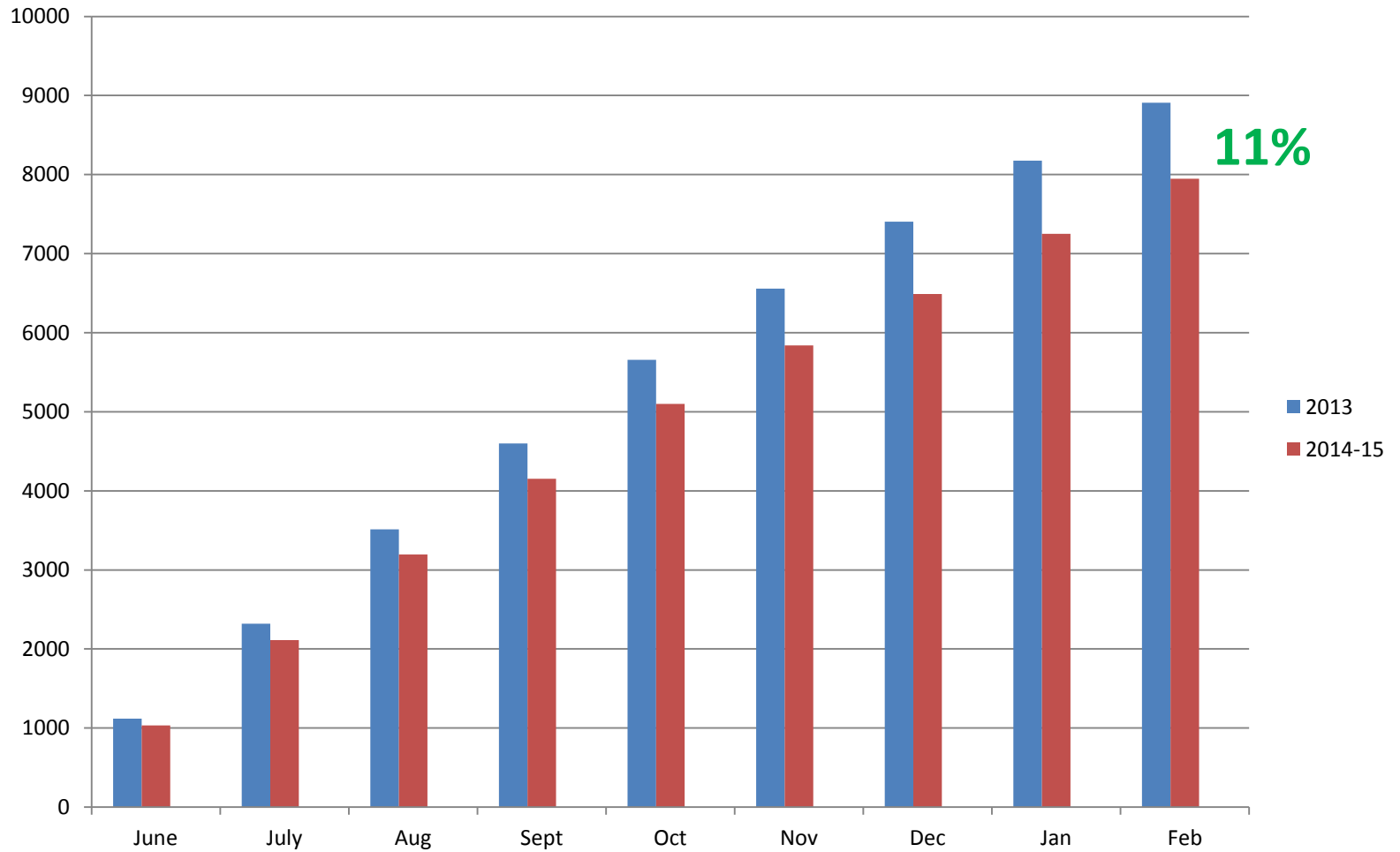




# New Mandatory Conservation Standards Monterey Peninsula 2013 Target Year



# Last Year's Performance



# The 2015 Sweepstakes: How Are We Doing So Far?

