

This meeting has been noticed according to the Brown Act rules. The Board of Directors meets regularly on the third Monday of each month. The meetings begin at 7:00 PM.



AGENDA

Regular Meeting Board of Directors Monterey Peninsula Water Management District

Monday, September 21, 2015, 7:00 pm
Conference Room, Monterey Peninsula Water Management District
5 Harris Court, Building G, Monterey, CA

Staff notes will be available on the District web site at
<http://www.mpwmd.net/asd/board/boardpacket/2015>
by 5 PM on Friday, September 18, 2015.

Brenda Lewis will participate by telephone from 1758 Broadway Avenue, Seaside, CA 93955

The 7 PM Meeting will be televised on Comcast Channels 25 & 28. Refer to broadcast schedule on page 3.

CALL TO ORDER/ROLL CALL

PLEDGE OF ALLEGIANCE

ORAL COMMUNICATIONS: Anyone wishing to address the Board on Consent Calendar, Information Items, Closed Session items, or matters not listed on the agenda may do so only during Oral Communications. Please limit your comment to three (3) minutes. The public may comment on all other items at the time they are presented to the Board.

CONSENT CALENDAR: The Consent Calendar consists of routine items for which staff has prepared a recommendation. Approval of the Consent Calendar ratifies the staff recommendation. Consent Calendar items may be pulled for separate consideration at the request of a member of the public, or a member of the Board. Following adoption of the remaining Consent Calendar items, staff will give a brief presentation on the pulled item. Members of the public are requested to limit individual comment on pulled Consent Items to three (3) minutes.

1. Consider Adoption of Minutes of the August 17, 2015 Regular Board Meeting
2. Authorize a Change to the Organization Chart to Fund a Water Resources Engineer Position and Eliminate Funding for the Project Manager Position
3. Wildlife Conservation Board California Stream Flow Enhancement Program Grant Application
(A) Consider Approval of Resolution 2015-16 in Support of Filing a Proposition 1 Grant Application (B) Authorize the General Manager to Enter into Grant Agreements

Board of Directors

Kristi Markey, Chair – Division 3
Jeanne Byrne, Vice Chair – Division 4
Brenda Lewis – Division 1
Andrew Clarke - Division 2
Robert S. Brower, Sr. – Division 5
David Pendergrass, Mayoral Representative
David Potter, Monterey County Board of Supervisors Representative

General Manager

David J. Stoldt

This agenda was posted at the District office at 5 Harris Court, Bldg. G Monterey on Wednesday, September 16, 2015. Staff reports regarding these agenda items will be available for public review on 9/17/15, at the District office and at the Carmel, Carmel Valley, Monterey, Pacific Grove and Seaside libraries. After staff reports have been distributed, if additional documents are produced by the District and provided to a majority of the Board regarding any item on the agenda, they will be available at the District office during normal business hours, and posted on the District website at <http://www.mpwmd.net/asd/board/boardpacket/2015>. Documents distributed at the meeting will be made available in the same manner. The next regular meeting of the Board of Directors is scheduled for October 19, 2015 at 7 pm.

4. Consider Extension of Cooperative Agreement with the United States Geological Survey for Streamflow Gaging in Water Year 2016
5. Consider Expenditure for Additions to WaterWise Website by Gardensoft
6. Consider Expenditure For Renewal of Standard License Agreement With CoreLogic Information Solutions, Inc.
7. Consider Extension of Memorandum of Understanding Regarding Source Waters and Water Recycling

PRESENTATIONS

8. Report from Sarah Hardgrave of the Big Sur Land Trust on the Carmel River FREE Project

GENERAL MANAGER'S REPORT

9. Status Report on California American Water Compliance with State Water Resources Control Board Order 2009-0060 and Seaside Groundwater Basin Adjudication Decision
10. Update on Development of Water Supply Projects
11. Report on Drought Response

ATTORNEY'S REPORT

DIRECTORS' REPORTS (INCLUDING AB 1234 REPORTS ON TRIPS, CONFERENCE ATTENDANCE AND MEETINGS)

12. Oral Reports on Activities of County, Cities, Other Agencies/Committees/Associations

PUBLIC HEARINGS – Public comment will be received on each of these items. Please limit your comment to three (3) minutes per item.

13. **Consider Adoption of Resolution 2015-17 -- Establish MPWMD as Groundwater Sustainability Agency for the Carmel Valley Alluvial Aquifer**
Action: The Board will consider adoption of Resolution 2015-17, and authorization for staff to submit a notice of intent with the State Department of Water Resources to become the Groundwater Sustainability Agency for the Carmel Valley Aquifer.
14. **Consider Adoption of Resolution 2015-18 Modifying Rule 162 -- Regulatory Water Production Targets for California American Water Systems**
Action: The Board will consider modifications to the Regulatory Water Production Targets in Tables XV-1, XV-2 and XV-3 of Rule 162. The modifications reflect the anticipated changes in Cal-Am production limits as set by the State Water Resources Control Board orders and Seaside Basin Adjudication decision in Water Year 2016 (Oct. 1, 2015 through Sept. 30, 2016).
15. **Consider Adoption of October through December 2015 Quarterly Water Supply Strategy and Budget**
Action: The Board will consider approval of a proposed production strategy for the California American Water Distribution Systems for the three-month period of October through December 2015. The strategy sets monthly goals for surface and groundwater production from various sources within the California American Water systems.
16. **Item deleted from the agenda prior to publication. No issue presented for discussion.**

ACTION ITEMS – No Action Items were Submitted for Board Consideration.

INFORMATIONAL ITEMS/STAFF REPORTS The public may address the Board on Information Items and Staff Reports during the Oral Communications portion of the meeting. Please limit your comments to three minutes.

17. Letters Received Supplemental Letter Packet
18. Committee Reports
19. Monthly Allocation Report
20. Water Conservation Program Report

21. Carmel River Fishery Report
22. Monthly Water Supply and California American Water Production Report

RECEIVE PUBLIC COMMENT ON CLOSED SESSION ITEMS

ADJOURN TO CLOSED SESSION

As permitted by Government Code Section 54956 et seq., the Board may adjourn to closed or executive session to consider specific matters dealing with pending or threatened litigation, certain personnel matters, or certain property acquisition matters.

1. **Conference with Legal Counsel – Existing Litigation (Gov. Code 54956.9 (a))**
 - A. MPWMD v. SWRCB; Santa Clara 1-10-CV-163328 – CDO
 - B. Application 15-07-019 - California-American Water Company (U210W) to Public Utilities Commission for Authorization to Modify Conservation and Rationing Rules, Rate Design, and Other Related Issues for the Monterey District

ADJOURNMENT

Board Meeting Broadcast Schedule – Comcast Channels 25 & 28	
View Live Webcast at Ampmedia.org	
Ch. 25, Sundays, 7 PM	Monterey
Ch. 25, Mondays, 7 PM	Monterey, Del Rey Oaks, Pacific Grove, Sand City, Seaside
Ch. 28, Mondays, 7 PM	Carmel, Carmel Valley, Del Rey Oaks, Monterey, Pacific Grove, Pebble Beach, Sand City, Seaside
Ch. 28, Fridays, 9 AM	Carmel, Carmel Valley, Del Rey Oaks, Monterey, Pacific Grove, Pebble Beach, Sand City, Seaside

Upcoming Board Meetings			
Mon. October 19, 2015	Regular Board Meeting	7:00 pm	District conference room
Mon. November 16, 2015	Regular Board Meeting	7:00 pm	District conference room
Mon. December 14, 2015	Regular Board Meeting	7:00 pm	District conference room

Upon request, MPWMD will make a reasonable effort to provide written agenda materials in appropriate alternative formats, or disability-related modification or accommodation, including auxiliary aids or services, to enable individuals with disabilities to participate in public meetings. MPWMD will also make a reasonable effort to provide translation services upon request. Please submit a written request, including your name, mailing address, phone number and brief description of the requested materials and preferred alternative format or auxiliary aid or service by 5:00 PM on Thursday, September 17, 2015. Requests should be sent to the Board Secretary, MPWMD, P.O. Box 85, Monterey, CA, 93942. You may also fax your request to the Administrative Services Division at 831-644-9560, or call 831-658-5600.

U:\staff\Boardpacket\2015\20150915\Sept21BoardMeetingAgenda.docx

ITEM: CONSENT CALENDAR**1. CONSIDER ADOPTION OF MINUTES OF THE AUGUST 17, 2015 REGULAR BOARD MEETING****Meeting Date: September 21, 2015****Budgeted: N/A****From: David J. Stoldt,
General Manager****Program/
Line Item No.: N/A****Prepared By: Arlene Tavani****Cost Estimate: N/A****General Counsel Review: N/A****Committee Recommendation: N/A****CEQA Compliance: N/A**

SUMMARY: Attached as **Exhibit 1-A** are draft minutes of the August 17, 2015 Regular meeting of the Board of Directors.

RECOMMENDATION: District staff recommends approval of the minutes with adoption of the Consent Calendar.

EXHIBIT**1-A** Draft Minutes of the August 17, 2015 Regular Board Meeting



EXHIBIT 1-A

DRAFT MINUTES
Regular Meeting
Board of Directors
Monterey Peninsula Water Management District
August 17, 2015

The meeting was called to order at 7:00 p.m. in the Water Management District conference room.

CALL TO ORDER/ROLL CALL

Directors Present:

Kristi Markey – Chair, Division 3
 Jeanne Byrne – Vice Chair, Division 4
 Brenda Lewis – Division 1
 Andrew Clarke – Division 2
 Robert S. Brower, Sr. – Division 5
 David Pendergrass – Mayoral Representative
 David Potter – Monterey County Board of Supervisors Representative

Directors Absent: None

General Manager present: David J. Stoldt

District Counsel present: David Laredo

The assembly recited the Pledge of Allegiance.

PLEDGE OF ALLEGIANCE

No comments were directed to the Board during Oral Communications.

ORAL COMMUNICATIONS

On a motion by Brower and second of Byrne, the Consent Calendar was approved unanimously on a vote of 7 – 0 by Markey, Byrne, Lewis, Clarke, Brower, Pendergrass and Potter.

CONSENT CALENDAR

Approved.

1. Consider Adoption of Minutes of the July 20, 2015 Regular Board Meeting

Approved an expenditure of \$10,000 to contract with Maddaus Water Management Inc.

2. Consider Contract with Maddaus Water Management Inc. for Commercial Water Efficiency Training

Approved.

3. Authorize a Change to the Organization Chart Adding a Conservation Representative I/II Position

Approved a contract amendment with Central Coast Surveyors for the amount of \$25,000.

4. Consider Expenditure for Carmel River Thalweg Profile

Approved expenditure of \$16,500 for Geographic Information Systems maintenance agreements.

Approved.

Approved.

A summary of Stoldt’s presentation is on file at the District office and on the agency website. Stoldt noted that rainfall was at 76% of long-term average as of July 31, 2015. Streamflow was estimated at 33% of long-term average for the same time period.

Stoldt reported that the District was awarded a \$200,000 drought contingency planning grant from the U.S. Bureau of Reclamation for completion of the North Monterey County Drought Contingency Plan. The District will provide matching funds of about \$300,000. A \$950,000 grant was also awarded by the U.S. Bureau of Reclamation for a basin study that includes the Carmel River and Seaside Basin. He announced that the District will make a presentation in September 2015 at the National WaterReuse Symposium regarding building a coalition in a collaborative fashion for the Pure Water Monterey Project. Stoldt will participate on a panel with Gary Peterson, City of Salinas; Paul Sciuto, Monterey Regional Water Pollution Control District; and David Potter, Monterey County Board of Supervisors. An award will also be presented at that conference for the Pure Water Monterey Project. In addition, at the Water Smart Innovations Conference in October 2015 staff will speak on water conservation and rationing program planning. The District will also make a presentation at the American Water Works Conference in October 2015.

David Armanasco introduced Kim Adamson, General Manager for DeepWater Desal who gave the presentation. A summary is on file at the District office and on the agency website. Armanasco and Adamson responded to questions from the Board. Armanasco noted that development of the desalination project is not dependent on creation of a data center. However, there is great interest from various parties about development of a data center. He thanked the Water Management District for support of the DeepWater Desal project.

No report.

Counsel Laredo reported that the Monterey Peninsula Taxpayers Association (MPTA) appealed the court’s decision to award costs to the District for the challenge brought by the MPTA on implementation of the Proposition 218 water supply charge. On Friday, August 14, 2015, the court denied the MPTA objections, ruled in favor of the District, and agreed that the costs were reasonable

5. Authorize Expenditure for Software Maintenance Agreements

6. Consider Approval of Fourth Quarter Fiscal Year 2014-2015 Investment Report

7. Consider Approval of May 2015 Treasurer's Report

GENERAL MANAGER’S REPORT

8. Status Report on California American Water Compliance with State Water Resources Control Board Order 2009-0060 and Seaside Groundwater Basin Adjudication Decision

9. Report from DeepWater Desal Project Representatives

10. Report on Drought Response

ATTORNEY’S REPORT

Counsel reported that at the 6:30 pm closed session, the Board was given a status report on items 1 and 2; no reportable action was taken.

11. Report from District Counsel on 6:30 pm Closed Session

1. **Conference with Real Property Negotiators (Gov. Code 54956.8)**
 - A. Address: 1910 General Jim Moore Blvd., Seaside, CA 93955
Agency Negotiator: David J. Stoldt, General Manager
Under Negotiation: Price and Terms
2. **Conference with Legal Counsel – Existing Litigation (Gov. Code 54956.9 (a))**
 - A. MPWMD v. SWRCB; Santa Clara 1-10-CV-163328 – CDO

Markey congratulated Directors Brower, Byrne and Clarke who had filed unopposed for candidacy in the November 2015 election and will therefore serve another four-year term on the Board. Markey announced that she did not file for candidacy for another term as Division 3 representative, because she is shopping for a new home and may be moving out of Division 3.

**DIRECTORS' REPORTS
(INCLUDING AB 1234 REPORTS ON TRIPS,
CONFERENCE ATTENDANCE AND MEETINGS)**

12. Oral Reports on Activities of County, Cities, Other Agencies/Committees/Associations

Brower offered a motion that was seconded by Byrne, that the Board determine that the State Water Resources Control Board's Eastwood/Odello Water Rights Change Petition certified Environmental Impact Report sufficiently analyzed the impacts related to water and hydrology and that the evaluation was adequate to rely upon for establishment of the Malpas Water Company LLC Water Entitlement, and that a Notice of Determination should be filed with the Monterey County Clerk. The motion was approved on a vote of 7 – 0 by Brower, Byrne, Clarke, Lewis, Markey, Pendergrass and Potter.

PUBLIC HEARINGS

13. Consider Second Reading and Adoption of Ordinance No. 165 Amending Rules 11, 21, 23 and 23.1 and Adding Rule 23.7 to Establish a Water Entitlement for Malpas Water LLC

On a motion by Byrne and second of Lewis, the second reading of Ordinance No. 165 was adopted unanimously on a roll-call vote of Brower, Byrne, Clarke, Lewis, Markey, Pendergrass and Potter. No comments were directed to the Board during the public hearing on this item.

On a motion by Pendergrass and second of Hampson, the Board approved the staff recommendation to: (1) Adopt the MPWMD Findings of Approval for Application #WDS-20150715MAL to create the Malpas Water Distribution System and amend the California American Water Water Distribution System; (2) Approve Application #WDS-20150715MAL and authorize issuance of MPWMD Permit #M15-04-L3 to create the Malpas

14. Consider Approval of Application #WDS-20150715MAL to Create Malpas Water Distribution System (WDS) and Amend California-American Water Company WDS Pursuant to SWRCB License

Water Distribution System with 33 Conditions of Approval and direct staff to file a Notice of Determination with the Monterey County Clerk; and (3) Approve Application #WDS-20150715MAL and authorize issuance of MPWMD Permit #M15-05-L3 for the California American Water/Malpasco Amendment with 32 Conditions of Approval and file a Notice of Determination with the Monterey County Clerk. The motion was approved unanimously on a vote of Brower, Byrne, Clarke, Lewis, Markey, Pendergrass and Potter. No comments were directed to the Board during the public hearing on this item.

On a motion of Byrne and second by Lewis the Board approved the staff recommendation to: (1) Adopt the MPWMD Findings of Approval for Application #WDS-20150715RYA for the California American Water (CAW)/Ryan-Ranch-Community Hospital of the Monterey Peninsula (CHOMP) Amendment; (2) Approve Application #WDS-20150715RYA and authorize issuance of MPWMD Permit #M15-06-L3 for the CAW/Ryan Ranch-CHOMP Amendment with Conditions of Approval; (3) Direct staff to file a Notice of Exemption with the County Clerk; and (4) Approve a Statement of Expanded Supply for the Ryan Ranch Unit. The motion was approved unanimously on a vote of Brower, Byrne, Clarke, Lewis, Markey, Pendergrass and Potter.

During the public hearing on this item, Tony Lombardo, representing Cypress Pacific, expressed support for the staff recommendation and stated that the applicant agreed with all permit conditions.

#13868A, California-American Water Company and Malpasco Water Company, LLC, Co-Applicants

- A. Approve Application to Create Malpasco WDS, Parcel APN 015-162-038 (Well Lot)**
- B. Approve Application to Amend California-American Water Company WDS to Receive Malpasco Source of Supply (CAW/Malpasco Amendment)**

- 15. Consider Approval of Application #WDS-20150715RYA to Transfer Cypress Pacific Water Rights to Community Hospital of the Monterey Peninsula (CHOMP) Parcels in Ryan Ranch**

- A. Consider Approval of Amendment to Ryan Ranch Unit Water Distribution System (WDS) to Enable Service to CHOMP, Parcels APN 259-221-004 and -005, California-American Water Company, Applicant**
- B. Consider Approval of Ryan Ranch WDS System Capacity Amendment in Compliance with MPWMD Decision on Insufficient Physical Supplies (June 2009)**

On a motion of Brower and second of Potter, the Board approved the staff recommendation to authorize staff to post notice of a public hearing scheduled for the September Board meeting, hold the public hearing, and subsequent to the hearing file Notice of intent with the State Department of Water Resources to become GSA for the Carmel Valley Alluvial Aquifer. The motion was approved on a vote of 7 – 0 by Brower, Byrne, Clarke, Lewis, Markey, Pendergrass and Potter. No comments were directed to the Board during the public comment period on this item.

Brower offered a motion that was seconded by Byrne, to authorize the General Manager to enter into an agreement for California American Water to co-fund up to \$1 million over three years for studies to evaluate long-term options for the future of Los Padres Dam and Reservoir. The General Manager would be authorized to make non-substantive changes to the draft agreement. The motion was approved on a vote of 7 – 0 by Brower, Byrne, Clarke, Lewis, Markey, Pendergrass and Potter.

The following comments were directed to the Board during the public comment period on this item. **(A) George Riley**, representing Public Water Now, encouraged the Water Management District to do what it determines is right for the watershed and the river as the District's priorities are superior to those of California American Water. **(B) Tom Rowley**, representing the Monterey Peninsula Taxpayers Association, suggested that plans for the New Los Padres Dam fish ladder be reviewed for applicability to fish passage for the Los Padres Dam long-term plan.

There was no discussion of the Informational Items/Staff Reports.

The meeting was adjourned at 8:40 pm.

ACTION ITEMS

16. **Consider District Assuming Role of Groundwater Sustainability Agency for Carmel Valley Alluvial Aquifer**
17. **Consider Entering into an Agreement with California American Water for Los Padres Dam Long-Term Plan**

INFORMATIONAL ITEMS/STAFF REPORTS

18. **Letters Received**
19. **Committee Report**
20. **Monthly Allocation Report**
21. **Water Conservation Program Report**
22. **Carmel River Fishery Report**
23. **Semi-Annual Financial Report on the CAWD/PBCSD Wastewater Reclamation Project**
24. **Monthly Water Supply and California American Water Production Report**

ADJOURNMENT

Arlene M. Tavani, Deputy District Secretary

ITEM: CONSENT CALENDAR**2. AUTHORIZE A CHANGE TO THE ORGANIZATION CHART TO FUND A WATER RESOURCES ENGINEER POSITION AND ELIMINATE FUNDING FOR THE PROJECT MANAGER POSITION**

Meeting Date:	September 21, 2015	Budgeted:	Yes
From:	David Stoldt General Manager	Program/ Line Item No.:	N/A N/A
Prepared By:	Cynthia Schmidlin Larry Hampson	Cost Estimate:	None

General Counsel Review: N/A**Committee Recommendation:** The Administrative Committee reviewed this item on September 14, 2015 and recommended approval.**CEQA Compliance:** N/A

SUMMARY: The District Project Manager position, currently held by Henrietta Stern, is in the Planning and Engineering (P&E) Division and will become vacant in December 2015, when Ms. Stern plans to retire. District management propose to eliminate funding for this position and replace it with a funded Water Resources Engineer position within the P&E division at the same salary range as the Project Manager position.

Due to evolving project commitments, the District needs a journeyman Registered Civil Engineer to assist with projects in both the Water Resources and P&E divisions. As described in **Exhibit 2-A** the Water Resources Engineer would perform professional engineering duties involving comprehensive watershed management, water supply projects, such as Pure Water Monterey and an expansion of the Aquifer Storage and Recovery project, construction inspection, and hydrologic analysis. Coordination of the District's Water Distribution System (WDS) permit process, as well as environmental document review and analysis currently performed by the Project Manager position, would also be part of the Water Resources Engineer responsibilities.

RECOMMENDATION: The District Board should authorize a change to the current District Organization Chart, **Exhibit 2-B**, to show the Project Manager as an unfunded position and to replace the unfunded Senior Water Resources Engineer position with a funded Water Resources Engineer position as shown in **Exhibit 2-C**. If this item is approved with the Consent Calendar, these changes would become effective January 1, 2016.

DISCUSSION: The duties of the Project Manager position have significantly changed over time. There have been periods with fewer project management responsibilities, but after the adoption of Ordinance 96 in 2001, there was an increase and an emphasis on WDS permit review and approval. The WDS permit process was recently streamlined and simplified by the Board. In considering both existing and future District activities, management determined that responsibility for WDS permit processing can be split between the Water Demand Division and the P&E Division. Water Demand will process WDS permit exemptions, which are now ministerial in nature, whereas P&E will take the lead in processing more complex permits that may require advanced knowledge of the District's Rules and Regulations that apply to WDS permits, water

rights, CEQA analysis, hydrology and hydrogeology, and well production history. A long-term goal is to transition all WDS permit processing to the Water Demand Division.

It is expected the District will need additional engineering expertise to manage and carry out several projects including the Pure Water Monterey Project, an expansion to the ASR Project, the Salinas River and Carmel River Basin Study, a Drought Contingency Plan, a retrofit of the Sleepy Hollow Steelhead Rearing Facility, analysis for the long-term plan for Los Padres Dam, and an updated instream flow study for the Carmel River. In addition, the District must also continue to carry out the Mitigation Program activities, of which several tasks would be assigned to the Water Resources Engineer.

IMPACTS TO STAFF/RESOURCES: The District's current organization chart includes a funded Project Manager position and an unfunded Senior Water Resources Engineer position. The latter position has been unfunded since 2012, when the Senior Water Resources Engineer at the time (Larry Hampson) transitioned into the District Engineer position and the District elected not to fill the Senior Water Resources Engineer position. It is proposed that the funded Project Manager position remain unfilled and unfunded after the retirement of Henrietta Stern and that the Senior Water Resources Engineer position, placed at Range 43 on the District Salary Schedule, be replaced by a funded Water Resources Engineer position, as described above. The new title and redesigned duties of the Water Resources Engineer better reflect current District requirements.

A survey of the local government agencies listed in the District's Personnel Compensation Policy, showing salaries for engineer positions with comparative duties, **Exhibit 2-D**, indicates that placement in Range 43 would be appropriate. The Project Manager position is also placed at Range 43 on the Salary Schedule so that the long-term net effect on salaries will be neutral. Because newly filled positions are normally placed no higher than step 3 (in a five step range) and there will be a short time when neither position is filled, salary and benefits costs in the P&E Division in Fiscal Year 2015-16 may go down from the budgeted amount. Changes to the District's organization would be effective as of January 1, 2016.

EXHIBITS

- 2-A** Water Resources Engineer Job Description
- 2-B** Current Organization Chart
- 2-C** Proposed Organization Chart
- 2-D** Local Government Agency Salary Survey

EXHIBIT 2-A**MONTEREY PENINSULA WATER MANAGEMENT DISTRICT****WATER RESOURCES ENGINEER**

*Class specifications are intended to present a descriptive list of the range of duties performed by employees in the class. Specifications are **not** intended to reflect all duties performed within the job.*

DEFINITION

To perform professional engineering duties involving comprehensive watershed management, water supply projects, and hydrologic analysis; to implement major engineering and environmental management programs to restore and enhance Carmel River streamside resources; and to perform a variety of technical tasks relative to assigned area of responsibility.

DISTINGUISHING CHARACTERISTICS

This is a journey level of professional engineering job classes. Positions at this level are characterized by the performance of technically-advanced, professional-level research studies, and/or management of some complex District projects. Employees at this level are expected to understand basic principles and theories, laws and regulations and structures of other related governmental agencies which regularly interact with the District. Incumbents may solicit and administer grants, serve as District representative and technical advisor on construction projects, prepare plans, specifications, and estimates and work with other professional and technical staff on multi-divisional projects. This position is distinguished from the Senior Water Resources Engineer by the latter position's management responsibility for program development, management of more complex projects involving multiple agencies and parties, and representation of District interests in official proceedings (such as before the SWRCB, Superior Court, or CPUC).

SUPERVISION RECEIVED AND EXERCISED

Receives general direction from the Planning and Engineering Manager/District Engineer; coordinates activities of other District staff, consultants, and contract employees on special projects.

ESSENTIAL AND MARGINAL FUNCTION STATEMENTS

The following duties are typical for positions in this classification. Any single position may not perform all of these duties and/or may perform similar related duties not listed here:

Essential Functions:

1. Conduct field and office engineering studies related to the planning, design, and construction of civil engineering projects and confer with other District staff and consultants to coordinate projects and activities. Such projects include, but are not limited to well construction, water pipeline construction, water quality testing, use of recycled water, use of recirculating aquaculture systems, construction of fish passage facilities, reservoir maintenance and sediment management, stabilization or repair of stream banks.
2. Manage, oversee and participate in engineering projects identified in paragraph 1, including the preparation of plans, specifications, cost and quantity estimates; secure appropriate permits; maintain accurate records, and prepare periodic and special reports; negotiate terms and fees; approve contractor and consultant pay requests.
3. Plan, prioritize, assign, supervise and review the work of staff and consultants involved in projects identified in paragraph 1 above.
4. Participate in construction field activities including mark and layout field work locations; interpret plans and resolve problems during construction; enforce permit conditions; prepare and review as-built plans to ensure compliance with original plans and specifications; perform long-term monitoring including photo documentation, surveys, and prepare periodic reports

MONTEREY PENINSULA WATER MANAGEMENT DISTRICT
Water Resources Engineer (Continued)

5. Provide technical assistance to private property owners regarding stream bank stabilization and repair; coordinate authorizations and permits from Federal, State, and local regulatory agencies for new stream restoration projects.
6. Review applications for river work permits and make recommendations to the Planning & Engineering Manager regarding conformance to District standards; inspect authorized work; make recommendations to permittee and/or the Planning and Engineering Manager regarding conformance with river work permits.
7. Gather and interpret hydrologic data including photos, cross-sections, profiles and sediment transport.
8. Inspect the Carmel River to identify and document erosion hazards, riparian ordinance violations, and opportunities for enhancement; make recommendations to the Planning and Engineering Manager regarding appropriate corrective projects and actions.
9. Make presentations to public agencies and private groups concerning projects.
10. Prepare drafts of the following documents: requests for proposals and calls for bids; contract plans and specifications; review contract bids and proposals; participate in the review of contractor work activities.
11. Maintain constant awareness of progress on assigned projects to ensure compliance with designated time and cost schedules for project completion.
12. Inspect construction projects and perform a full range of construction contract administration duties; document onsite conditions; represent the District on site; provide reports and recommendations to senior staff as required to complete project construction.
13. Participate in budget preparation; prepare cost estimates for project budget recommendations; monitor and control expenditures on assigned projects.
14. Establish schedules and methods for providing assigned services; identify resource needs; review needs with appropriate management staff; allocate resources accordingly.
15. Coordinate and manage the District's Water Distribution System Permit program.
16. Represent the District to other governmental and regulatory agencies, professional and community groups and others; answer questions and provide information to the public; investigate complaints and recommend corrective actions as necessary to resolve complaints.
17. Perform related duties and responsibilities as required.

QUALIFICATIONS

Knowledge of:

Civil engineering principles and practices related to one or more of the following activities: planning, design, construction, and construction management skills relevant and applicable to well construction, water pipeline construction, water quality testing, use of recycled water, use of recirculating aquaculture systems, construction of fish passage facilities, reservoir maintenance projects, stream bank stabilization, repair, and other streamside corridor enhancement projects, river mechanics, or fluvial geomorphology.

Principles and practices of project and construction management.

Principles and practices of engineering design.

Principles and practices of engineering surveying.

Terminology, methods, practices, and techniques used in technical civil engineering report preparation.

Principles and practices of budget preparation and control.

Principles of mathematics as applied to engineering work.

MONTEREY PENINSULA WATER MANAGEMENT DISTRICT
Water Resources Engineer (Continued)

Recent developments, current literature, and sources of information regarding civil engineering of stream and river restoration projects, construction of new and recycled water supply projects, and projects to enhance anadromous fisheries.

Modern office procedures, methods, and computer software and hardware as related to the solution of engineering problems.

Pertinent federal, state, and local laws, codes, and regulations governing civil engineering, construction, and water quality including Section 401 and 404 of the federal Clean Water Act, the federal and state Endangered Species Acts, the California Environmental Quality Act, the California Department of Fish and Wildlife Code, and Monterey County Ordinances.

Ability to:

Plan, organize, and supervise the work of technical staff and consultants.

Manage complex engineering projects.

Administer and coordinate various projects and activities simultaneously.

Ensure project compliance with appropriate federal, state, and local rules, laws, and regulations.

Coordinate phases of construction projects and prepare progress reports.

Analyze problems, identify alternative solutions, project consequences of proposed actions, and implement recommendations in support of goals.

Conduct comprehensive engineering studies and develop appropriate recommendations.

Perform technical research and solve difficult engineering problems.

Prepare and maintain technical civil engineering records and prepare comprehensive reports.

Compile rough technical data and prepare statistical and narrative reports from field studies.

Develop, review and modify civil engineering plans, designs, and specifications.

Exercise professional engineering judgment to achieve results consistent with objectives.

Identify threatened and endangered species in the field.

Understand pertinent sections of the federal and state Endangered Species Acts.

Incorporate measures to protect threatened species into project designs and project maintenance.

Use sophisticated word processing, spreadsheet, modeling, and graphical design programs.

Communicate clearly and concisely, both orally and in writing.

Establish and maintain effective working relationships with those contacted in the course of work.

Maintain physical condition appropriate to the performance of assigned duties and responsibilities.

Experience and Training Guidelines — *Any combination of experience and training that would likely provide the required knowledge and abilities is qualifying. A typical way to obtain the knowledge and abilities would be:*

Experience

Four years of increasingly responsible professional civil engineering experience one year of project management responsibility.

Training

Equivalent to a Bachelor's degree from an accredited college or university with major course work in civil engineering or closely related field.

License or Certificate:

Possession of or ability to obtain a valid certificate of registration as a Professional Civil Engineer in the State of California (if out of state, must be a licensed or registered engineer from a state with reciprocity with California).

Possession of, or the ability to obtain, an appropriate, valid driver's license.

WORKING CONDITIONS

The conditions herein are representative of those that must be met by an employee to successfully perform the essential functions of this job. Reasonable accommodations may be made to enable individuals with disabilities to

MONTEREY PENINSULA WATER MANAGEMENT DISTRICT
Water Resources Engineer (Continued)

perform the essential job functions.

Environmental Conditions:

Office and field environment; travel from site to site; exposure to atmospheric conditions; work around moving water; work with computers.

Physical Conditions:

Essential functions may require maintaining physical condition necessary for sitting, standing and walking for prolonged periods of time in and around river beds; operating motorized vehicles.

Vision:

See in the normal visual range with or without correction; vision sufficient to read small print, computer screens and other printed documents.

Hearing:

Hear in the normal audio range with or without correction.

U:\staff\Boardpacket\2015\20150915\ConsentCldr\02\Item2_Exhibit2-A.docx

DRAFT

EXHIBIT 2-B

**MONTEREY PENINSULA WATER MANAGEMENT DISTRICT
CURRENT ORGANIZATION CHART
September 2015**

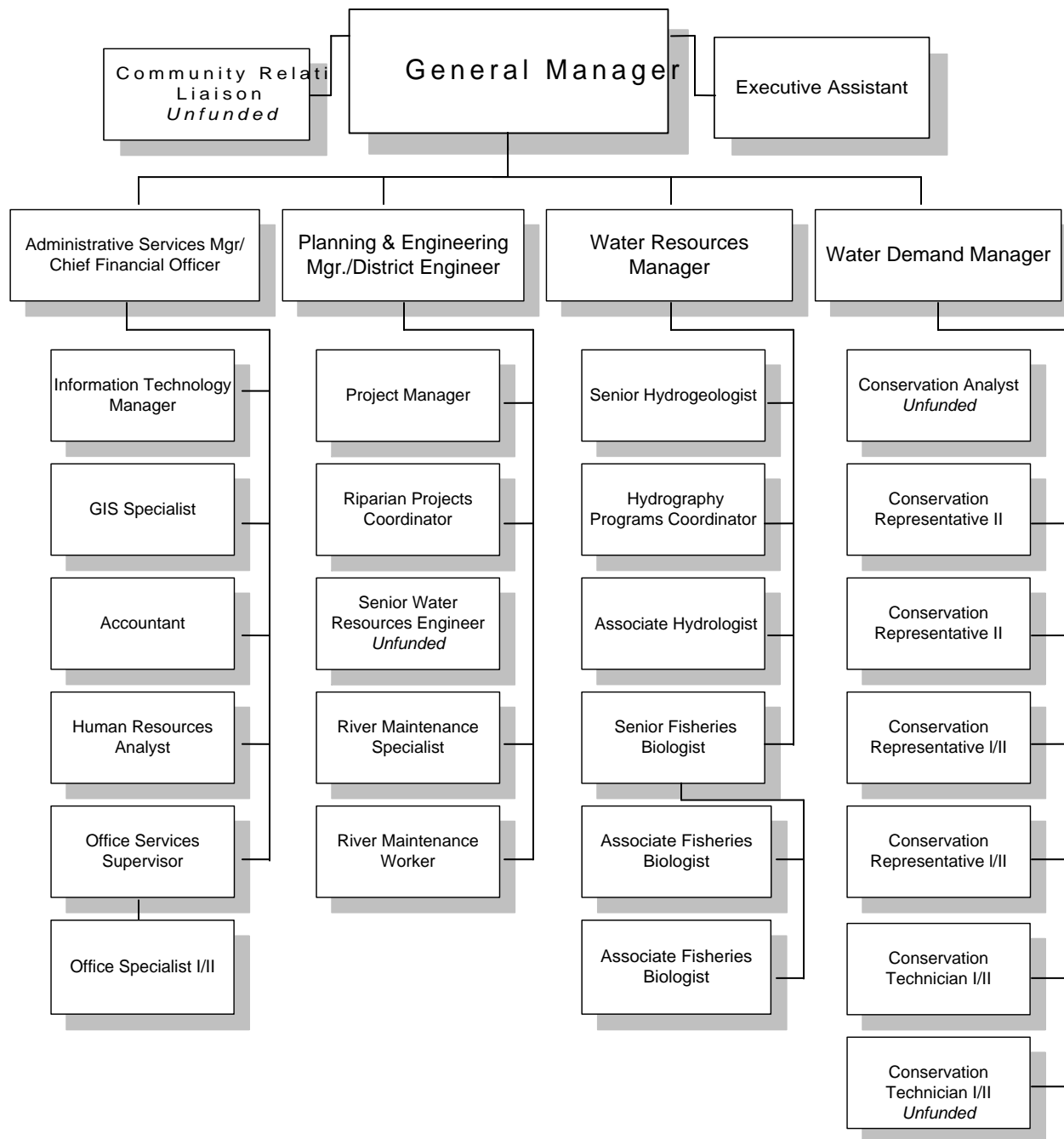


EXHIBIT 2-C

**MONTEREY PENINSULA WATER MANAGEMENT DISTRICT
PROPOSED ORGANIZATION CHART
September 2015**

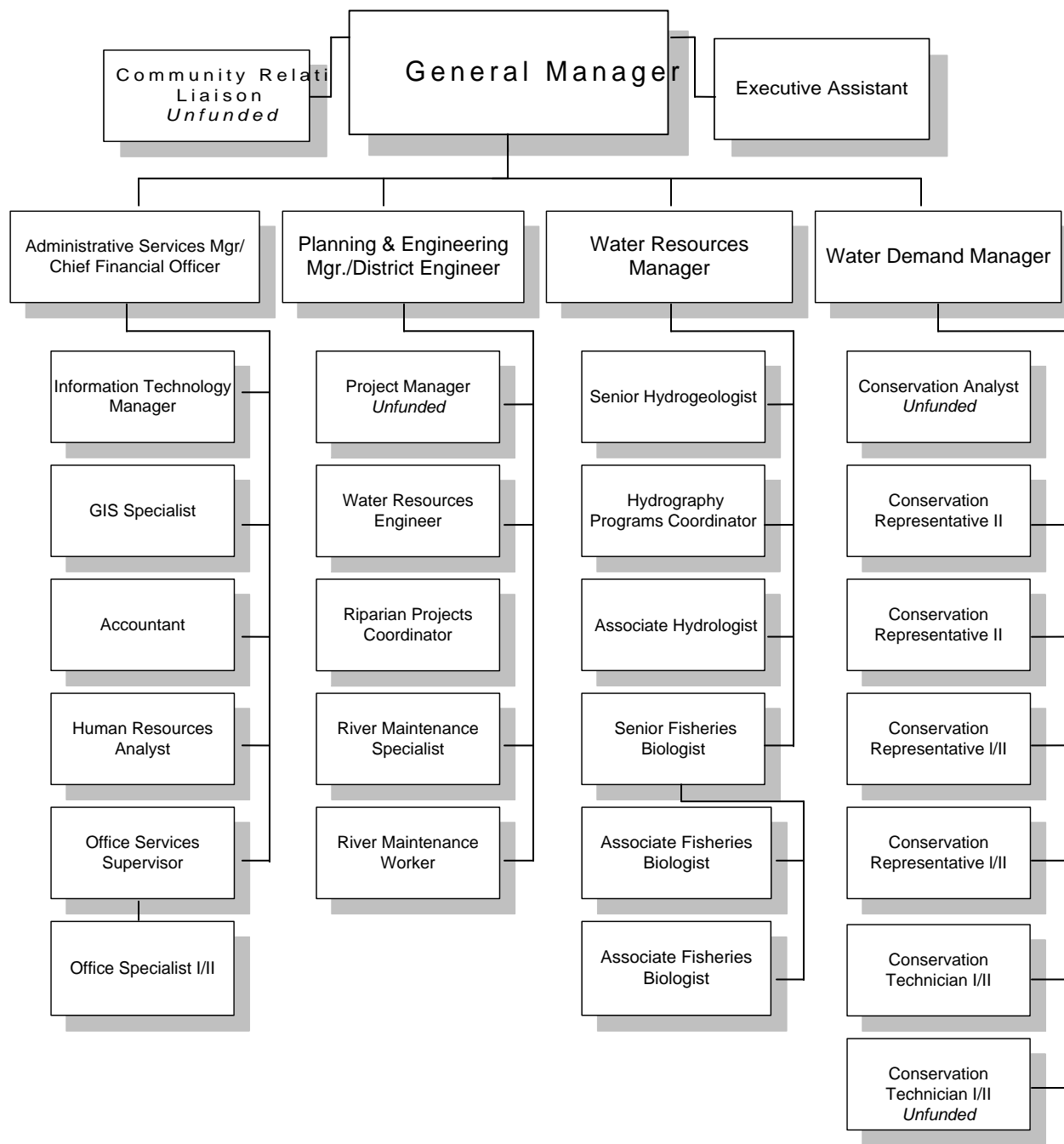


EXHIBIT 2-D**Comparable Public Sector Agency Compensation - Current Monthly Salary, August 2015**

Agency	Engineering	Salary Range
Monterey Peninsula Water Mgmt District	Water Resources Engineer	\$7,218-\$8,704
Alameda County Water District	Engineer III	\$10,045 - \$12,211
Association of Monterey Bay Area Governments	No Match	N/A
Carmel Area Waste Water District	No Match	
CA Department of Fish and Game	Associate Civil Engineer	\$7,156 - \$8,915
CA Department of Parks and Recreation	Associate Civil Engineer	\$7,156 - \$8,915
CA Department of Water Resources -	Water Resources Control Engineer	\$7,125 - \$8,915
City of Carmel	No Match	
City of Monterey	Associate Civil Engineer	\$7,322 - \$8,898
City of Pacific Grove	No Match	
City of Salinas	Sr. Civil Engineer	\$7,430 - \$9,483
City of Santa Cruz	Sr. Civil Engineer	\$7,293 - \$9,871
City of Seaside	Associate Civil Engineer	\$7,126 - \$8,502
Monterey County Water Resources Agency	Senior Water Resources Engineer	\$7,329 - \$10,004
Monterey Regional Water Pollution Control Agency	Associate Engineer	\$8,989 - \$12,349
Pajaro Valley Water Management Agency	No Match	
Santa Clara Valley Water District	Associate Civil Engineer	\$8,840 - \$11,313

ITEM: CONSENT CALENDAR**3. WILDLIFE CONSERVATION BOARD CALIFORNIA STREAMFLOW ENHANCEMENT PROGRAM GRANT APPLICATION****(A) CONSIDER APPROVAL OF RESOLUTION 2015-16 IN SUPPORT OF FILING A PROPOSITION 1 GRANT APPLICATION****(B) AUTHORIZE THE GENERAL MANAGER TO ENTER INTO GRANT AGREEMENTS**

Meeting Date:	September 21, 2015	Budgeted:	Yes
From:	David J. Stoldt, General Manager	Program/ Line Item No:	Water Supply Projects 1-8-1-A IFIM feasibility studies
Prepared By:	Larry Hampson	Cost Estimate:	\$125,000

General Counsel Review: N/A**Committee Recommendation: The Administrative Committee reviewed this item on September 14, 2015 and recommended approval.****CEQA Compliance: N/A**

SUMMARY: For Fiscal Year 2015/16 the Wildlife Conservation Board (WCB) is proposing to award up to \$38,400,000 statewide in competitive grants from Proposition 1 bond funds. Up to \$5 million will be available for scientific studies including "... studies to evaluate instream flow needs...or evaluate habitat suitability and temperature needs." The FY 2015-16 District budget includes \$125,000 for the development of such studies. District staff is requesting authorization to move forward with a grant application for a project estimated at \$400,000 with a local match of \$125,000 (31.25% local match). Applications are due September 30, 2015. If this item is approved by the Board and a grant is awarded to the District, an agreement would be executed between MPWMD and the WCB and staff would retain one or more consultants to complete the project.

RECOMMENDATION: If this item is approved, the Board will:

- A) Adopt Resolution 2015-16 to apply for a grant from the Proposition 1 California Stream Flow Enhancement Program;
- B) Authorize the General Manager to enter into a contract with the Wildlife Conservation Board (or State of California) to receive a grant. The General Manager will also be authorized to negotiate agreements with consultants to carry out the scope of work described in the grant contract.

District staff recommends approval of the above actions.

DISCUSSION: A 2010 report by the State Water Resources Control Board recommends completion of an instream flow study for the Carmel River and estimates its cost at \$400,000 to

\$800,000. The District previously authorized up to \$100,000 for assistance to develop a scope of work for an Instream Flow Incremental Method study and for work to test existing habitat suitability criteria for steelhead in the Carmel River (see March 25, 2015 Board meeting agenda, Item 3). Approximately \$90,000 has been expended to date to complete a detailed scope of work for the study and to begin testing for habitat suitability.

If this project is awarded grant funds, the District would be responsible for grant administration, in-house analysis, and oversight of consultant contracts. Where feasible, both MPWMD and CDFW resources would be used in the field to defray the cost of field sampling, which can be labor intensive. For a grant, the District would provide in-kind services and fund consultant costs for a total of up to \$125,000 in local cost share. The State would be asked to fund up to \$275,000 for the project for a total project cost of \$400,000.

The IFIM study would involve developing a one-dimensional (1D) and 2D hydraulic model to simulate flow and habitat at specific locations in the Carmel River that are considered representative of the river from Highway 1 at River Mile (RM) 1 to Los Padres Dam at RM 25. Habitat suitability criteria (HSC) would be developed based on a test of whether Big Sur River HSC can be used in the Carmel River (to be conducted) or on field measurements in the Carmel River.

The IFIM study would be used to evaluate what instream flows are appropriate for various steelhead life stages and how different levels of flow diversions would affect habitat in the river for each life stage. In addition, staff would analyze lagoon elevation data and inflow to the lagoon collected since 1991 to determine beach percolation rates and the frequency of specific water levels. This would be coupled with data from a study by the Malpas Water Company of steelhead habitat quality and quantity at various levels and in all four seasons.

The District, CDFW, NMFS, Cal-Am, and others are interested in evaluating both existing Carmel River operations and the effects to steelhead habitat from proposed alternatives for water supply, surface flow management, and well operations in the Carmel Valley Alluvial Aquifer.

IMPACT ON STAFF/RESOURCES: Application for a grant will be completed by the District's Planning and Engineering Division staff with assistance from the Water Resources Division. Minimal direct costs may be incurred to obtain relevant documents from other agencies and to copy and mail the application. If the District receives a grant, staff time will be required to administer a grant, to coordinate with other agencies, and to facilitate consultant services.

EXHIBIT

3-A Resolution No. 2015-16



EXHIBIT 3-A

RESOLUTION NO. 2015-16

**A RESOLUTION OF THE BOARD OF DIRECTORS
OF THE MONTEREY PENINSULA WATER MANAGEMENT DISTRICT
TO APPLY FOR PROPOSITION 1 CALIFORNIA STREAM FLOW ENHANCEMENT PROGRAM
GRANT AND AUTHORIZE THE GENERAL MANAGER TO ENTER INTO A CONTRACT WITH THE
STATE OF CALIFORNIA**

Resolved by the Board of Directors of the Monterey Peninsula Water Management District, that application be made to the Wildlife Conservation Board to obtain a California Stream Flow Enhancement Program Grant pursuant to the Water Quality, Supply, and Infrastructure Improvement Act of 2014 (Proposition 1), for tasks to conduct an instream flow study for the Carmel River and to enter into an agreement to receive a grant for such tasks. The General Manager of the Monterey Peninsula Water Management District is hereby authorized and directed to prepare the necessary data, conduct investigations, file such application, and if a grant is awarded, execute a grant agreement with the State of California.

On motion of Director _____, and second by Director _____, the foregoing resolution is duly adopted this 21st day of September 2015, by the following votes:

AYES:

NAYES:

ABSENT:

I, David J. Stoldt, Secretary of the Board of Directors of the MPWMD, hereby certify that the foregoing is a full, true and correct copy of a resolution duly adopted on the 21st day of September 2015.

Witness my hand and seal of the Board of Directors, this _____ day of September, 2015.

David J. Stoldt, Secretary to the Board

ITEM: CONSENT CALENDAR**4. CONSIDER EXTENSION OF COOPERATIVE AGREEMENT WITH THE UNITED STATES GEOLOGICAL SURVEY FOR STREAMFLOW GAGING IN WATER YEAR 2016**

Meeting Date:	September 21, 2015	Budgeted:	Yes
From:	Dave Stoldt General Manager	Program/ Line Item No.:	2-5-1 A
Prepared By:	Greg James	Cost Estimate:	\$14,250

General Counsel Approval: N/A**Committee Recommendation: The Administrative Committee reviewed this item on September 14, 2015 and recommended approval.****CEQA Compliance: N/A**

SUMMARY: The United States Geological Survey (USGS) operates two streamflow gaging stations on the Carmel River:

- (1) Carmel River at Robles del Rio (No. 11143200) and
- (2) Carmel River near Carmel (No. 11143250).

The upper or "Robles" gage is immediately downstream of Esquiline Bridge (River Mile 14.4) and the lower or "Carmel" gage is immediately downstream of Via Mallorca Bridge (River Mile 3.6). The Monterey Peninsula Water Management District (District) relies on the flow data from both of these stations to support a variety of programs and studies. It should be noted that the Robles del Rio station is funded by the Monterey County Water Resources Agency.

RECOMMENDATION: Authorize the General Manager to execute the agreement with the USGS providing cooperative investigation of the water resources within the District for Water Year (WY) 2016 for an amount not-to-exceed \$14,250. The Administrative Committee reviewed this item on September 14, 2015 and recommended this agreement be approved by a vote of 2 to 0.

BACKGROUND: The District has funded a cooperative water resources program with the USGS to monitor Carmel River streamflow since the late 1980s. Other than the District, the USGS is the only other independent agency that monitors continuous Carmel River streamflow. The Carmel station provides a long-term streamflow record that began in 1962. The USGS streamflow data provide a valuable cross check for the District's streamflow data when verifying the daily, annual, and peak flows that occur on the Carmel River. The USGS Carmel River streamflow data also support the District's implementation of Aquifer Storage and Recovery (ASR) operations in the Seaside Groundwater Basin in that the data are utilized in real-time to assist in scheduling when to commence or cease injection, given current trends in streamflow conditions. In addition, as a cooperator with the USGS, the District has an improved ability to

request and obtain various streamflow information including annual reports, current flow conditions, and historical flood flow information.

IMPACT TO STAFF/RESOURCES: The District's share for continuation of streamflow monitoring at the Carmel River near Carmel station for WY 2016 (October 1, 2015 - September 30, 2016) is \$14,250, as indicated on **Exhibit 4-A**, which represents a four percent increase over the WY 2015 cost.

EXHIBIT

4-A Draft Joint Funding Agreement for Water Year 2016

U:\staff\Boardpacket\2015\20150915\ConsentCIndr\04\Item4.docx

California Water Science Center
6000 J Street, Placer Hall
California State University
Sacramento, California 95819-6129
Phone: (916) 278-3000 Fax: (916) 278-3070
<http://water.wr.usgs.gov>

DRAFT

Mr. David Stoldt, General Manager
Monterey Peninsula Water Management District
Post Office Box 85
Monterey, California 93942-0085

Subject: Carmel River near Carmel Gage, Joint Funding Agreement, Water Year 2016

Dear Mr. Stoldt:

This letter confirms discussions between our respective staffs, concerning the continuation of the cooperative water resources program between the Monterey Peninsula Water Management District (District) and the U.S. Geological Survey (USGS) for the period November 1, 2015 to October 31, 2016.

The proposed program and associated costs are as follows:

<u>Station number and name</u>		District	USGS	Total
		<u>Funds</u>	<u>Funds</u>	<u>Funds</u>
11143250	Carmel River near Carmel	<u>\$14,250</u>	<u>\$7,200</u>	<u>\$21,450</u>
TOTAL		<u>\$14,250</u>	<u>\$7,200</u>	<u>\$21,450</u>

Total cost of the proposed program is \$21,450. Cost to the District is \$14,250, and subject to the availability of Federal matching funds, the USGS will provide \$7,200.

Enclosed are two originals of Joint Funding Agreement (JFA) 16WSCA14300, signed by our agency, for your approval. If you are in agreement with this proposed program, please return one fully executed JFA to our office. Work performed with funds from this agreement will be conducted on a fixed-price basis. Billing for this agreement will be rendered annually.

The USGS is required to have an agreement in place prior to any work being performed on a project. We request that a fully executed JFA be returned prior to November 1, 2015. If it is not received by November, we will be required to suspend operations until an agreement is received.

Mr. David Stoldt, General Manager- Monterey Peninsula WMD

If you have any questions concerning this program, please contact Anthony Guerriero, in our Santa Cruz Field Office, at (831) 460-7494. If you have any administrative questions, please contact Tammy Seubert, in our Sacramento Office, at (916) 278-3040.

Sincerely,

Eric G. Reichard
Director, USGS California Water Science Center

Enclosure

cc: Mr. Greg James
Monterey Peninsula Water Management District
Post Office Box 85
Monterey, California 93942-0085
Anthony Guerriero, USGS CAWSC

Form 9-1366
(April 2015)

Page 1 of 2

U.S. Department of the Interior
U.S. Geological Survey
Joint Funding Agreement
FOR
Water Resource Investigations

Agreement#: 16WSCA14300
Customer#: 6000000949
Project #: ZG009J5
TIN #: 94-2535586
USGS DUNS #: 1761-38857

Fixed Cost Agreement YES[X] NO[]

THIS AGREEMENT is entered into as of the November 1, 2015, by the U.S. GEOLOGICAL SURVEY, California Water Science Center, UNITED STATES DEPARTMENT OF THE INTERIOR, party of the first part, and the MONTEREY PENINSULA WATER MANAGEMENT DISTRICT party of the second part.

1. The parties hereto agree that subject to the availability of appropriations and in accordance with their respective authorities there shall be maintained in cooperation for cooperative water resources investigations in the Monterey Peninsula Water Management District area, herein called the program. The USGS legal authority is 43 USC 36C; 43 USC 50, and 43 USC 50b.

2. The following amounts shall be contributed to cover all of the cost of the necessary field and analytical work directly related to this program. 2(b) include In-Kind-Services in the amount of \$0.00

- (a) \$7,200.00 by the party of the first part during the period November 1, 2015 to October 31, 2016
- (b) \$14,250.00 by the party of the second part during the period November 1, 2015 to October 31, 2016
- (c) Contributions are provided by the party of the first part through other USGS regional or national programs, in the amount of : \$0.00

Description of the USGS regional/national program:
Not Applicable

- (d) Additional or reduced amounts by each party during the above period or succeeding periods as may be determined by mutual agreement and set forth in an exchange of letters between the parties
- (e) The performance period may be changed by mutual agreement and set forth in an exchange of letters between the parties.

3. The costs of this program may be paid by either party in conformity with the laws and regulations respectively governing each party.

4. The field and analytical work pertaining to this program shall be under the direction of or subject to periodic review by an authorized representative of the party of the first part.

5. The areas to be included in the program shall be determined by mutual agreement between the parties hereto or their authorized representatives. The methods employed in the field and office shall be those adopted by the party of the first part to insure the required standards of accuracy subject to modification by mutual agreement.

6. During the course of this program, all field and analytical work of either party pertaining to this program shall be open to the inspection of the other party, and if the work is not being carried on in a mutually satisfactory manner, either party may terminate this agreement upon 60 days written notice to the other party.

7. The original records resulting from this program will be deposited in the office of origin of those records. Upon request, copies of the original records will be provided to the office of the other party.

8. The maps, records or reports resulting from this program shall be made available to the public as promptly as possible. The maps, records or reports normally will be published by the party of the first part. However, the party of the second part reserves the right to publish the results of this program and, if already published by the party of the first part shall, upon request; be furnished by the party of the first part; at cost, impressions suitable for purposes of reproduction similar to that for which the original copy was prepared. The maps, records or reports published by either party shall contain a statement of the cooperative relations between the parties.

9. USGS will issue billings utilizing Department of the Interior Bill for Collection (form DI-1040). Billing documents are to be rendered annually. Payments of bills are due within 60 days after the billing date. If not paid by the due date, interest will be charged at the current Treasury rate for each 30 day period, or portion thereof, that the payment is delayed beyond the due date. (31 USC 3717; Comptroller General File B-212222, August 23, 1983.).

Form 9-1366
(April 2015)

Page 2 of 2

U.S. Department of the Interior
U.S. Geological Survey
Joint Funding Agreement
FOR
Water Resource Investigations

Agreement#: 16WSCA14300
Customer#: 600000949
Project #: ZG009J5
TIN #: 94-2535586
USGS DUNS #: 1761-38857

USGS Technical Point of Contact

Name: Anthony Guerriero
Supervisory Hydrologic Technician
Address: 400 Natural Bridges Drive
Santa Cruz, CA 95060
Telephone: (831) 460-7494
Fax: (831) 427-4475
Email: aguerrie@usgs.gov

Customer Technical Point of Contact

Name: David Stoldt
General Manager
Address: Post Office Box 85
Monterey, CA 93942-0085
Telephone:
Fax:
Email:

USGS Billing Point of Contact

Name: Tamara Seubert
Budget Analyst
Address: Placer Hall 6000 J Street
Sacramento, CA 95819
Telephone: (916) 278-3040
Fax: (916) 278-3070
Email: tseubert@usgs.gov

Customer Billing Point of Contact

Name:
Address:
Telephone:
Fax:
Email:

U.S. Geological Survey
United States
Department of Interior

MONTEREY PENINSULA
WATER MANAGEMENT DISTRICT

Signature

Signatures

By _____ Date: _____
Name: Eric G. Reichard
Title: Director, USGS California Water Science
Center

By _____
Name: _____
Title: _____

By _____
Name: _____
Title: _____

By _____ Date: _____
Name: _____
Title: _____



ITEM: CONSENT CALENDAR**5. CONSIDER EXPENDITURE FOR ADDITIONS TO WATERWISE WEBSITE BY GARDENSOFT**

Meeting Date:	September 21, 2015	Budgeted:	Yes
From:	David Stoldt General Manager	Program/ Line Item No.:	Water Conservation 4-2-3
Prepared By:	Stephanie Locke	Cost Estimate:	\$4,000

General Counsel Review: N/A**Committee Recommendation: The Administrative Committee reviewed this item on September 14, 2015 and recommended approval.****CEQA Compliance: N/A**

SUMMARY: In 2004, District staff worked with GardenSoft to create a Water-Wise Gardening CD-rom and web application which promotes drought tolerant and low water use landscaping. This software is an interactive program that allows the user to view images of mature drought tolerant landscapes, select plant species from the images and load them into a printable shopping list. Features include a design tool for planning a new landscape, irrigation efficiency principles, maintenance tips and a basic water guide.

Upgrades to the Water-Wise Gardening program are now available through GardenSoft. These upgrades would add features such as a landscape watering schedule calculator and streamline the site navigation for an improved user experience. The Water Calculator will allow home owners to plug in their location, plant type, sprinkler type, slope, exposure, and local watering restrictions to create an accurate watering schedule for their landscape. For a cost of \$4,000 the following changes would be made (**Exhibit 5-A**):

- Rebuild cascading menu across all pages
- Build a Water Calculator based on local ETo Zones
- Float the message panel
- Add hotlink toggle switch
- Switch backgrounds

RECOMMENDATION: Authorize staff to enter into contract with GardenSoft for menu upgrades, design improvements, and the addition of a Water Calculator in the amount of \$4,000. The funding for this is reimbursable through the CPUC approved Conservation budget.

EXHIBITS**5-A GardenSoft Scope of Work**



Scope of Work/Web Contract

Client: Monterey Peninsula Water Management District
 Description: New Additions to Water Wise Web Site
 Contract ID: WWG0064
 Date Revised: July 30, 2015
 Contact: Gerry Kiffe
 Phone: 805-499-9689

INSTRUCTIONS

1. Review the information contained within this proposal.
 2. Sign, date, and include a purchase order number (if applicable) in the Work Acceptance section below.
 3. Fax the agreement to GardenSoft (805-492-0146) Attn: Anne
-

Contents

I. Signatures of Acceptance	2
II. Synopsis.....	3
III. Scope of Work and Deliverables.....	3
IV. Delivery Date, Costs, Payment Schedule, License	7
V. Addendum.....	8
VI. Agency Obligations	9
VII. Contacting GardenSoft.....	9
VIII. Terms and Conditions.....	10

I. Acceptance of Agreement

By signing this agreement, we mutually accept all of the provisions presented in the Contents of this document. Payment for work completed based on this agreement will be invoiced as per the terms and conditions set forth in this document.

MPWMD AGENCY representative

Date Signed

Gerry Kiffe, General Manager GardenSoft

Date Signed

II. Synopsis

GardenSoft will add a group of features to the MPWMD Water Wise Web Site. The major addition is a Water Calculator. The scope of work will be itemized below.

III. Scope of Work and Deliverables

Web Improvements List:

1. Rebuild Menu: Create cascading menus and all menu options available on all pages:
2. Float Message Panel.
3. Add hotlink toggle switch, replace and improve Add to project button,
4. Switch backgrounds to the color choice by client.
4. Build a Water Calculator with multiple ETo Zones

Total Cost: \$4000

IV. Delivery Date, Review, Costs, Payment Schedule, License

Delivery Date

Delivery will be provided within 4 weeks of signing date or purchase order. The project can begin with the issuance of a purchase order, commitment email or a signed contract. The items listed will be done all at once and invoice when all are completed.

Review Opportunities

Review of web site prior to going live will be provided on a private site for client.

Payment Schedule Components:

Cost: \$4000 Billed upon completion 30 days for payment

License

This project does not alter or amend the current license agreement for the MPWMD Water Wise Gardening Web site.

V. Addendum**Addendum: Intellectual Property Clause**

All photos or intellectual property taken or owned by AGENCY remain the property of the AGENCY and may not be used in any way without written permission of AGENCY. Conversely, all photographs, content, software and or intellectual properties provided by GardenSoft in the course of this project will remain the property of GardenSoft and may not be used in any way without written permission of GardenSoft. If pictures used in the system are desired for promotion of the web site or CD systems, or for other water conservation brochures or flyers they will be made available upon request.

Addendum: Termination Clauses

Should GardenSoft go out of business before the license agreement term is completed then GardenSoft will turn over the software system to the client in CDROM or DVD formats for further use. Should AGENCY desire to suspend use of the website during the license period then GardenSoft will take down the site but the payment terms will be completed as agreed upon in this contract.

VI. AGENCY Obligations

The AGENCY and its staff will:

1. Provide feedback to work when requested
2. Review all completed work within 7 days of delivery

VII. Contacting GardenSoft

For Project Questions and horticultural Issues:

Gerry Kiffe
General Manager
2686 Velarde Dr.
Thousand Oaks, CA 91360
805-499-9689
Fax: 805-499-9689
Email: gerry@gardensoft.com
World Wide Web: www.gardensoft.com

For technical questions and support:

Mark Chilcott
Director of Engineering
2686 Velarde Dr.
Thousand Oaks, CA 91360
Telephone: 805-492-0120
Fax: 805-492-0146
Email: Mark@gardensoft.com
www.gardensoft.com

ITEM: CONSENT CALENDAR**6. CONSIDER EXPENDITURE FOR RENEWAL OF STANDARD LICENSE AGREEMENT WITH CORELOGIC INFORMATION SOLUTIONS, INC.**

Meeting Date:	September 21, 2015	Budgeted:	Yes
From:	David J. Stoldt, General Manager	Program/ Line Item No.:	Services & Supplies 26-05-761000
Prepared By:	Stephanie Pintar	Cost Estimate:	\$12,000.00

General Counsel Approval: N/A

Committee Recommendation: The Administrative Committee reviewed this item on September 14, 2015 and recommended approval.

CEQA Compliance: N/A

SUMMARY: The District has contracted with CoreLogic Information Solutions to license its online RealQuest Professional services since 2001. The RealQuest service supports the District's programs by providing property information needed for noticing, deed restriction preparation and enforcement of the District's water efficiency standards. The service is utilized daily by the Water Demand Division, and occasionally by the Water Resources Division and the Planning and Engineering Division. There are no other reasonably accessible alternative sources for the information provided by RealQuest.

The RealQuest license includes:

- Property Profile/Reports
- Street Map Search
- Parcel Maps
- Street Maps Plus
- User sign-on and passwords for eight staff (six in Water Demand; one in Water Resources and one in Planning and Engineering)
- Access to recorded documents and associated document imaging

Staff is requesting authorization to spend \$12,000.00 to continue the license for RealQuest services. Funding for this expenditure was included in the Fiscal Year 2015-2016 budget.

RECOMMENDATION: Staff recommends the Administrative Committee ratify this item with a recommendation that the Board authorize staff to expend up to \$12,000.00 for the standard license agreement and deposit.

IMPACT TO STAFF/RESOURCES: None.

EXHIBIT

None

ITEM: CONSENT CALENDAR**7. CONSIDER EXTENSION OF MEMORANDUM OF UNDERSTANDING REGARDING SOURCE WATERS AND WATER RECYCLING**

Meeting Date:	September 21, 2015	Budgeted:	N/A
From:	David J. Stoldt General Manager	Program/ Line Item No.:	Groundwater Replenishment Project 1-5-1
Prepared By:	David J. Stoldt	Cost Estimate:	N/A

General Counsel Approval: N/A
Committee Recommendation: N/A
CEQA Compliance: N/A

SUMMARY: On October 8, 2014 Monterey Regional Water Pollution Control Agency, the Monterey County Water Resources Agency, the City of Salinas, the Marina Coast Water District, and Monterey Peninsula Water Management District, collectively the "Parties" entered into a Memorandum of Understanding (MOU) for the development of permanent agreements in support of the Pure Water Monterey groundwater replenishment project. The MOU anticipated agreements in place by March 31, 2015. While progress is being made on multiple fronts, it became clear that the March 31 deadline could not be met. On April 20, 2015, the Board approved an extension to June 30, 2015. The deadline was extended again on July 20, 2015, to September 30, 2015. Amendment 3 attached as **Exhibit 7-A** would extend the deadline to December 31, 2015.

RECOMMENDATION: The General Manager recommends that the Board of Directors approve Amendment 3 to the MOU.

EXHIBIT

7-A Amendment 3 to Memorandum of Understanding Regarding Source Waters and Water Recycling

**AMENDMENT 3
TO
MEMORANDUM OF UNDERSTANDING REGARDING
SOURCE WATERS AND WATER RECYCLING**

THIS AMENDMENT 3 TO THE MEMORANDUM OF UNDERSTANDING (“Amendment”) is made this ____ day of September 2015, by and between Monterey Regional Water Pollution Control Agency, the Monterey County Water Resources Agency, the City of Salinas, the Marina Coast Water District, and Monterey Peninsula Water Management District, collectively the “Parties.”

Sections 4 and “MISCELLANEOUS” Item 7 are amended to read as follows:

4. Accounting Protocols

PCA to enter into agreement with WRA by December 31, 2015 to achieve the following:

- a. PCA’s adoption of activity-based costing for all its CSIP, SRDF and SVRP activities.
- b. Revision of the various financial protocols currently utilized to achieve one standard protocol for each of CSIP, SRDF and SVRP.
- c. Allocation methodologies for costs associated with CSIP, SRDF, and SVRP.
- d. An annual audit of PCA’s financial transactions related to CSIP, SRDF and SVRP at WRA expense.
- e. PCA to credit to the CSIP and SVRP accounts any pro rata revenues it receives from byproducts of tertiary treated wastewater.
- f. A third-party agreed upon by both PCA and WRA to be hired to design and implement these Accounting Protocols.

MISCELLANEOUS

7. This Memorandum of Understanding will expire the earlier of (i) execution of a Definitive Agreement, or (ii) December 31, 2015.

#####

WITNESS, the Monterey Regional Water Pollution Control Agency, the Monterey County Water Resources Agency, the City of Salinas, Marina Coast Water District, and the Monterey Peninsula Water Management District entered into this Memorandum of Understanding as of the date first written above.

MONTEREY REGIONAL WATER POLLUTION CONTROL AGENCY

By: _____

Its: _____

MONTEREY COUNTY WATER RESOURCES AGENCY

By: _____

Its: Chair of the Monterey County Water Resources Agency Board of Supervisors

CITY OF SALINAS

By: _____

Its: _____

MARINA COAST WATER DISTRICT

By: _____

Its: _____

MONTEREY PENINSULA WATER MANAGEMENT DISTRICT

By: _____

Its: _____

ITEM: PUBLIC HEARING**13. CONSIDER ADOPTION OF RESOLUTION 2015-17 – ESTABLISH MPWMD AS GROUNDWATER SUSTAINABILITY AGENCY FOR THE CARMEL VALLEY ALLUVIAL AQUIFER**

Meeting Date:	September 21, 2015	Budgeted:	N/A
From:	David J. Stoldt, General Manager	Program/ Line Item No.:	N/A N/A
Prepared By:	David J. Stoldt	Cost Estimate:	N/A

General Counsel Review: N/A**Committee Recommendation: On September 8, 2015 the Water Supply Planning Committee voted unanimously to recommend approval.****CEQA Compliance: N/A**

SUMMARY: The Sustainable Groundwater Management Act (SGMA) was signed into law on September 16, 2014 and was comprised of three separate bills, AB 1739, SB 1168, and SB 1319. SGMA provides for local or regional management of groundwater. Section 10723 of SB 1168 states, “the following agencies created by statute to manage groundwater shall be deemed the exclusive local agencies within their respective statutory boundaries with powers to” become a groundwater sustainability agency (GSA) and specifically lists 15 local agencies of which Monterey Peninsula Water Management District is one.

GSAs must be formed by June 30, 2017 although many have already been formed across the state. At its August 17th meeting, the Board determined to start the process to elect the District to become GSA for the Carmel Valley Alluvial Aquifer now, and after consultation with other affected parties, to become GSA for the Seaside Groundwater Basin at a later date. The Water Supply Planning Committee considered this issue on September 8, 2015, and recommended that the Board of Directors adopt Resolution 2015-17 and proceed with the process to become GSA for the Carmel Valley Alluvial Aquifer.

The process to become a GSA requires a public hearing whereupon the Board would adopt a resolution electing to become the GSA. A copy of proposed Resolution 2015-17 is attached as **Exhibit 13-A**. The public hearing was noticed in the newspaper for two successive weeks on September 7 and September 14, 2015 as required by law. A copy of the text of the public notice is attached as **Exhibit 13-B**. Subsequent to the hearing the District will file notice of intent with the Department of Water Resources, as well as file basin boundaries and a list of interested parties. A draft notice of intent is attached as **Exhibit 13-C**.

RECOMMENDATION: The Board should adopt Resolution 2015-17, and direct the General Manager to file Notice of Intent with the State Department of Water Resources to become GSA for the Carmel Valley Alluvial Aquifer.

BACKGROUND: 80 percent of Californians rely, in part, on groundwater. Groundwater storage is 10-times the water stored in surface reservoirs, but until SGMA was signed into law California did not have a framework for the regulation of groundwater. SGMA defines sustainable groundwater management and requires that medium- and high-priority basins form GSAs by June 30, 2017 and adopt Groundwater Sustainability Plans (GSPs) within 5-7 years. The GSPs will provide detailed physical descriptions, monitoring and management provisions, and describe interaction with other plans such as general plans. The GSP must indicate a path to sustainability within 20 years of adoption. “Sustainable” as described in SGMA includes no “surface water depletions that have significant and unreasonable adverse impacts on beneficial users.”

There are 515 basins in California, of which 127 are medium- or high-priority. The basins and their boundaries are described in DWR Bulletin 118. The Carmel Valley Alluvial Aquifer is a “high-priority” basin and the Seaside Groundwater Basin is “medium-priority”. Adjudicated basins do not require a GSP and have reduced reporting requirements.

EXHIBITS

- 13-A** Proposed Resolution 2015-17 “Establish MPWMD as Groundwater Sustainability Agency for the Carmel Valley Alluvial Aquifer”
- 13-B** Text of Public Notice
- 13-C** Draft Notice of Intent

EXHIBIT 13-A**RESOLUTION NO. 2015-17****A RESOLUTION OF THE BOARD OF DIRECTORS OF THE MONTEREY PENINSULA WATER MANAGEMENT DISTRICT TO ESTABLISH MPWMD AS GROUNDWATER SUSTAINABILITY AGENCY FOR THE CARMEL VALLEY ALLUVIAL AQUIFER**

WHEREAS, on September 16, 2014 the Sustainable Groundwater Management Act (SGMA) was signed into law and adopted into the California Water Code, commencing with Section 10720; and

WHEREAS, the legislative intent of SGMA is to provide for the sustainable management of groundwater basins, to enhance local management of groundwater, to establish minimum standards for sustainable groundwater management, and to provide local groundwater agencies with the authority and the technical and financial assistance necessary to sustainably manage groundwater; and

WHEREAS, Water Code Sections 10725 and 10726 detail additional new powers and authorities granted to Groundwater Sustainability Agencies (GSAs) to implement sustainable groundwater management in the basins under their jurisdictions; and

WHEREAS, Water Code Section 10723(c)1(I) specifically identifies the Monterey Peninsula Water Management District (District) as one of several agencies created by statute to manage groundwater that shall be deemed the exclusive local agencies within their respective statutory boundaries with powers to become the Groundwater Sustainability Agency for basins within their jurisdictions; and

WHEREAS, the District's boundaries wholly overlies the Carmel Valley Alluvial Aquifer (also referred to as the Carmel Valley Basin by the California Department of Water Resources (DWR) Bulletin 118); and

WHEREAS, the Carmel Valley Basin is deemed to be a "high-priority" basin by DWR and therefore requiring a Groundwater Sustainability Plan (GSP); and

WHEREAS, Establishing the District as the Groundwater Sustainability Agency will enable the District to prepare and implement a Groundwater Sustainability Plan for the Carmel Valley Basin, or in the alternative to best work with DWR and the State Water Resources Control Board to resolve groundwater and surface water issues related to the Carmel Valley Basin; and

WHEREAS, the District is committed to its legislatively created mandate to manage the surface water and groundwater resources in its jurisdiction; and

WHEREAS, adoption of this Resolution does not constitute a "project" under California Environmental Quality Act Guidelines Section 15738(b)(5) including organizational and

administrative activities of government because there would be no direct or indirect physical change in the environment; and

WHEREAS, prior to adopting a resolution of intent to establish the District as a GSA, Water Code Section 10723 requires the local agency to hold a public hearing, after publication of notice pursuant to California Government Code Section 6066, on whether or not to adopt a resolution to establish a GSA; and

WHEREAS, pursuant to Government Code 6066, notices of a public hearing on whether or not to adopt a resolution to establish a GSA were published on September 7, 2015 and September 14, 2015; and

WHEREAS, on September 21, 2015 this District held a public hearing regarding the adoption of a resolution to establish the District as GSA for the Carmel Valley Alluvial Aquifer (also referred to as the Carmel Valley Basin);

NOW, THEREFORE, BE IT RESOLVED that the Board of Directors of the Monterey Peninsula Water Management District:

1. Hereby establishes the District as the Groundwater Sustainability Agency for the Carmel Valley Alluvial Aquifer; and
2. Hereby authorizes the General Manager or his designee to provide a copy of this resolution and a Notice of Intent to the California Department of Water Resources within 30 days and to otherwise comply with the requirements of Water Code Section 10723.8(a); and
3. All the recitals in this Resolution are true and correct and the District so finds, determines, and represents.

On motion of Director _____, and second by Director _____, the foregoing resolution is duly adopted this ___ day of September, 2015 by the following votes:

AYES:

NAYS:

ABSENT:

I, David J. Stoldt, Secretary to the Board of Directors of the Monterey Peninsula Water Management District, hereby certify that the foregoing is a resolution duly adopted on the ___ day of September, 2015.

Witness my hand and seal of the Board of Directors this ___ day of September, 2015.

David J. Stoldt
Secretary to the Board

EXHIBIT 13-B**Notice of Public Hearing**

NOTICE OF PUBLIC HEARING: Monday, September 21, 2015 – 7:00 pm, Conference Room of the Monterey Peninsula Water Management District, 5 Harris Court, Bldg. G, Monterey, CA 93940, at a Regular Meeting of the Monterey Peninsula Water Management District Board of Directors: Public Hearing, discussion, and possible action to establish the Monterey Peninsula Water Management District (MPWMD) as the Groundwater Sustainability Agency for the Carmel Valley Alluvial Aquifer, located within the County of Monterey and the boundaries of the MPWMD pursuant to California Water Code Section 10723. Draft copies of the proposed resolution to establish MPWMD as the Groundwater Sustainability Agency for the Carmel Valley Alluvial Aquifer, the detailed agenda and related files will be available at least 72 hours before the scheduled meeting at the MPWMD website <http://www.mpwmd.net/asd/board/boardpacket/2015/2015.htm> or by calling 831-658-5610.

All interested parties are invited to attend the public hearing and present their views. Individuals who are unable to attend the public hearing may submit written comments regarding the subject of the hearing to the MPWMD by the time the proceedings begin on September 21, 2015. Submit written comments to the MPWMD office at 5 Harris Court Bldg., G Monterey, or mail them to PO Box 85, Monterey, CA, 93942; email to arlene@mpwmd.net or fax to 831-644-9560. These comments will be brought to the attention of the Board of Directors and will become part of the official public record. In accordance with Water Code Section 10723.4, any person that would like to receive notice regarding Groundwater Sustainability Plan preparation, meeting announcements, or availability of draft plans, maps and other relevant documents, please submit a written request to Arlene Tavani at the address, fax or email address listed above.

If you have questions regarding this notice or the matters to be heard, please contact Arlene Tavani at (831) 658-5652 or arlene@mpwmd.net. Please refer to the MPWMD website <http://www.mpwmd.net/SGMA/CVAA/CVAAPage.htm> for updates throughout the process of establishment of the Groundwater Sustainability Agency and development of a Groundwater Sustainability Plan for the Carmel Valley Alluvial Aquifer.

EXHIBIT 13-C**Draft Notice of Intent**

September 25, 2015

Mark Nordberg, GSA Project Manager
California Department of Water Resources
P.O., Box 942836
Sacramento, California 94236

Re: Notice of Intent to Become a Groundwater Sustainability Agency (GSA) and to Prepare a Groundwater Sustainability Plan for the Carmel Valley Alluvial Aquifer (Carmel Valley Basin)

Dear Mr. Nordberg,

Pursuant to Water Code Section 10723.8, the Monterey Peninsula Water Management District (District) hereby notifies the California Department of Water Resources (DWR) of its intent to undertake sustainable groundwater management of Carmel Valley Basin with boundaries as identified in DWR Bulletin 118, Update 2003. This basin is also referred to as the Carmel Valley Alluvial Aquifer. This basin is classified by DWR as a high-priority basin under the Sustainable Groundwater Management Act.

The District service area boundary wholly encompasses the Carmel Valley Alluvial Aquifer. There are no other GSAs operating within the groundwater basin. The District's service area boundaries and our understanding of the Aquifer's boundaries are contained as GIS shapefiles on the CD-ROM enclosed.

After a September 21, 2015 public hearing held in accordance with Water Code Section 10723(b), the District adopted the attached Resolution No. 2015-17 establishing the District as GSA. No new bylaws, ordinances, or other authorities were adopted in conjunction with the establishment of the GSA. A copy of the resolution is attached. Public notices published prior to the September 21, 2015 public hearing provided information regarding how interested parties can participate in the development and implementation of the GSP, in accordance with Water Code Section 10727.8. In addition, the District's website provides information on how to participate in the process. Pursuant to Water Code Section 10727.8, a written statement regarding how interested parties can participate in the development and implementation of a Groundwater Sustainability Plan has been provided to the Monterey County Board of Supervisors.

In accordance with Water Code Section 10723.2, the District will consider the interests of all beneficial uses, users of groundwater within its management areas, and other interested parties. In accordance with Water Code Section 10723.4, a list of Interested Parties has been established and will be maintained. Pursuant to Water Code Section 10723.8(a)(4), these Parties' interests will be considered in the operation of the GSA and the development and implementation of Groundwater Sustainability Plans (GSPs) as attached hereto:

If you require further information regarding these matters or have any questions, please contact Joe Oliver of my staff at 831-658-5640 or joe@mpwmd.net.

Sincerely,

General Manager

Attachments:

List of Interested Parties
District Resolution No. 2015-17

Enclosure: 1 CD

DRAFT

**Carmel Valley Alluvial Aquifer
Groundwater Sustainability Plan**

List of Interested Parties

Monterey Peninsula Water Management District
California American Water Company
State Water Resources Control Board
Carmel River Advisory Committee
Carmel Valley Association
Carmel River Steelhead Association
Monterey County Department of Environmental Health
(TO COME Develop List of all CVAA Pumpers)

DRAFT

ITEM: PUBLIC HEARING**14. CONSIDER ADOPTION OF RESOLUTION NO. 2015-18 MODIFYING RULE 162 – REGULATORY WATER PRODUCTION TARGETS FOR CALIFORNIA AMERICAN WATER SYSTEMS****Meeting Date:** September 21, 2015 **Budgeted:** N/A**From:** David J. Stoldt,
General Manager **Program/** N/A
Line Item No.:**Prepared By:** Joe Oliver **Cost Estimate:** N/A**General Counsel Review:** N/A**Committee Recommendation:** N/A**CEQA Compliance:** N/A

SUMMARY: District Rule 162 specifies the regulatory water production targets that are used in the District’s *Expanded Water Conservation and Standby Rationing Plan* to trigger higher stages of water conservation to facilitate California American Water (Cal-Am) compliance with the production limits set by State Water Resources Control Board (SWRCB) Orders 95-10 and 2009-0060 and the Seaside Groundwater Basin adjudication decision, as amended. Specifically, Table XV-1 in **Exhibit 14-A** shows monthly and year-to-date at month-end targets for all Cal-Am systems that derive their source of supply or rely on production offsets from the Monterey Peninsula Water Resource System (MPWRS). Similarly, Table XV-2 in **Exhibit 14-A** breaks out monthly and year-to-date at month-end targets for Cal-Am satellite systems that derive their source of supply from the Laguna Seca Subarea of the Seaside Groundwater Basin, which is part of the MPWRS. In addition, Table XV-3 in **Exhibit 14-A** breaks out monthly and year-to-date at month-end targets for Cal-Am Carmel River system sources and is included to provide additional clarification as to the production target maximums for this component of the MPWRS.

Rule 162 authorizes modifications to Tables XV-1, XV-2 and XV-3 to account for changes in the amount of water that Cal-Am is allowed to divert from the Carmel River System under the pertinent SWRCB Orders and the amount of water that Cal-Am is allowed to produce from the Seaside Groundwater Basin under the Seaside Basin Decision, as administered by the Seaside Basin Watermaster. Any modifications to these tables must be made by Board resolution.

Resolution 2015-18 (**Exhibit 14-A**) modifies Tables XV-1, XV-2 and XV-3 of Rule 162 to account for the projected change in allowable diversions by Cal-Am from the Carmel River and Seaside Groundwater Basins for Water Year 2016.

RECOMMENDATION: District staff recommends adoption of Resolution 2015-18 (**Exhibit 14-A**) modifying Rule 162.

EXHIBIT

14-A Resolution 2015-18 Modifying Rule 162 – Regulatory Water Production Targets for California American Water Systems



EXHIBIT 14-A

**RESOLUTION NO. 2015-18
A RESOLUTION OF THE BOARD OF DIRECTORS OF THE
MONTEREY PENINSULA WATER MANAGEMENT DISTRICT
MODIFYING RULE 162 – REGULATORY PRODUCTION TARGETS FOR
CALIFORNIA AMERICAN WATER SYSTEMS**

WHEREAS, the Monterey Peninsula Water Management District has developed a set of rules to facilitate compliance by California American Water systems with the regulatory and legal water production limits set by the State Water Resources Control Board and the Seaside Basin Adjudication as administered by the Seaside Groundwater Basin Watermaster;

WHEREAS, District Rule 162 specifies the regulatory water production targets that are used to trigger higher stages of water conservation to ensure compliance with these legal and regulatory water production limits;

WHEREAS, these limits are subject to change by action of the State Water Resources Control Board and Seaside Groundwater Basin Watermaster;

WHEREAS, the State Water Resources Control Board adopted Order WR 2009-0060 on October 20, 2009, which requires California American Water to divert no more than 9,703 acre-feet in Water Year 2016 from its Carmel River system sources;

WHEREAS, the Monterey County Superior Court adopted an Amended Decision in the Seaside Groundwater Basin Adjudication on February 9, 2007 (*California American Water v. City of Seaside, et al.*, Case No. M66343), which requires California American Water to divert no more than 2,251 acre-feet from the Coastal Subareas and 48 acre-feet from the Laguna Seca Subarea of the Seaside Groundwater Basin in Water Year 2016;

WHEREAS, the Seaside Groundwater Basin Watermaster has not yet determined the amount of carryover credit, if any, that California American Water has from Water Year 2015 that will be available for diversion in Water Year 2016; and

WHEREAS, it is necessary to modify the monthly and year-to-date at month-end water production targets in Tables XV-1, XV-2 and XV-3 to reflect the projected quantities of production available to California American Water for diversion from the Carmel River and Seaside Groundwater Basins for Water Year 2016.

NOW THEREFORE, BE IT RESOLVED:

1. District staff shall modify Tables XV-1, XV-2 and XV-3 of District Rule 162 to reflect the projected quantities of production available to California American Water for diversion from the Carmel River and Seaside Groundwater Basins for Water Year 2016.
2. Specifically, District staff shall replace the monthly and year-to-date at month-end values presently shown in Tables XV-1, XV-2 and XV-3 of Rule 162 with the monthly and year-to-date at month-end values shown on the attached tables (**Attachment 1**).

On motion of Director _____, and second by Director _____, the foregoing resolution is duly adopted this 21st day of September 2015, by the following votes:

AYES:

NAYES:

ABSENT:

I, David J. Stoldt, Secretary of the Board of Directors of the MPWMD, hereby certify that the foregoing is a full, true and correct copy of a resolution duly adopted on the 21st day of September 2015.

Witness my hand and seal of the Board of Directors, this _____ day of September, 2015.

David J. Stoldt, Secretary to the Board

Attachment 1

Table XV-1
Regulatory Water Production Targets
for All California American Water Systems from Sources
Within the Monterey Peninsula Water Resource System

(All Values in Acre-Feet)

Month	Monthly Target	Year-to-Date at Month-End Target
October	1,076	1,076
November	904	1,980
December	796	2,776
January	797	3,573
February	748	4,321
March	850	5,171
April	914	6,085
May	1,112	7,197
June	1,157	8,354
July	1,258	9,612
August	1,239	10,851
September	1,151	12,002
TOTAL	12,002	---

Notes:

Monthly and year-to-date at month-end production targets are based on the annual production limit specified for the California American Water (Cal-Am) systems for Water Year (WY) 2016 from Carmel River sources per State Water Resources Control Board Order WR 2009-0060 (9,703 acre-feet) and adjusted annual production limits specified for the Cal-Am satellite systems from its Coastal Subarea sources (2,251 acre-feet) and Laguna Seca Subarea sources (48 acre-feet) of the Seaside Groundwater Basin per the Seaside Basin adjudication decision. These values do not include consideration of any carryover credit in the Seaside Basin for WY 2016. This combined total (12,002 acre-feet) was distributed monthly based on Cal-Am's reported monthly average production for its main and satellite systems during the WY 2006 through 2013 period.

Attachment 1

Table XV-2
Regulatory Water Production Targets
for California American Water Satellite Systems from Sources
Within the Monterey Peninsula Water Resource System

(All Values in Acre-Feet)

Month	Monthly Target	Year-to-Date at Month-End Target
October	5	5
November	3	8
December	3	11
January	3	14
February	2	16
March	3	19
April	3	22
May	5	27
June	5	32
July	6	38
August	5	43
September	5	48
TOTAL	48	---

Notes:

Monthly and year-to-date at month-end production targets are based on the adjusted annual production limit specified for the California American Water (Cal-Am) satellite systems for Water Year 2016 from its sources in the Laguna Seca Subarea of the Seaside Groundwater Basin per the Seaside Basin adjudication decision. This Laguna Seca Subarea total (48 acre-feet) was distributed monthly based on Cal-Am's reported monthly average production for its satellite systems during the WY 2006 through 2013 period.

Attachment 1

Table XV-3
Regulatory Water Production Targets
for California American Water Systems from Carmel River Sources
Within the Monterey Peninsula Water Resource System

(All Values in Acre-Feet)

Month	Monthly Target	Year-to-Date at Month-End Target
October	869	869
November	730	1,599
December	644	2,244
January	645	2,889
February	605	3,494
March	687	4,181
April	740	4,920
May	899	5,820
June	934	6,754
July	1,017	7,771
August	1,002	8,773
September	930	9,703
TOTAL	9,703	---

Notes:

Monthly and year-to-date at month-end production targets are based on the annual production limit specified for California American Water (Cal-Am) for Water Year (WY) 2016 from its Carmel River system sources per State Water Resources Control Board Order WR 2009-0060 (9,703 acre-feet). This amount was distributed monthly based on Cal-Am's reported monthly average production for its Main system sources during the WY 2006 through 2013 period. These values incorporate consideration of the triennial reductions specified for the Cal-Am systems in the Seaside Basin adjudication decision, in setting the monthly maximum production targets from each source as part of the MPWMD Quarterly Water Supply Budget Strategy.

ITEM: PUBLIC HEARING**15. CONSIDER ADOPTION OF OCTOBER THROUGH DECEMBER 2015 QUARTERLY WATER SUPPLY STRATEGY AND BUDGET**

Meeting Date:	September 21, 2015	Budgeted:	N/A
From:	David J. Stoldt, General Manager	Program/ Line Item No.:	N/A
Prepared By:	Kevan Urquhart & Jonathan Lear	Cost Estimate:	N/A

General Counsel Review: N/A**Committee Recommendation: N/A****CEQA Compliance: Notice of Exemption, CEQA, Article 19, Section 15301 (Class 1)****ESA Compliance: Consistent with the 2001 Conservation Agreement, 2009 Settlement Agreement between the National Marine Fisheries Service and California American Water to minimize take of listed steelhead in the Carmel River, and SWRCB WR Order Nos. 95-10, 98-04, 2002-0002, and 2009-0060.**

SUMMARY: The Board will accept public comment and take action on the October through December 2015 Quarterly Water Supply Strategy and Budget for California American Water's (Cal-Am) Main and Laguna Seca Subarea Water Distribution Systems (WDS). The proposed budgets, are included as **Exhibit 15-A and 15-B**, and show monthly production by source of supply that is required to meet projected customer demand in CalAm's Main and Laguna Seca Subarea systems (i.e., Ryan Ranch, Bishop, and Hidden Hills) during the October through December 2015 period. The proposed strategy and budgets are designed to maximize the long-term production potential and protect the environmental quality of the Seaside Groundwater and Carmel River Basins.

RECOMMENDATION: The Board should receive public input, close the Public Hearing, and discuss the proposed quarterly water supply budget. District staff will recommend adoption of the proposed budget. The budgets will be described in greater detail in **Exhibit 15-C**, Quarterly Water Supply Strategy Report: October - December 2015

BACKGROUND: The Quarterly Water Supply Strategy and Budget pertains to production within Cal-Am's Main and Laguna Seca Subarea systems for the three-month period of October, November, and December 2015. Staff from the District and Cal-Am met to cooperatively review, refine and approve this strategy on September 10, 2015. Staff from the California Department of Fish and Wildlife (CDFW), National Marine Fisheries Service (NMFS), and State Water Resources Control Board's, Division of Water Rights (SWRCB-DWR) attended.

Rule 101, Section B of the District Rules and Regulations requires that a Public Hearing be held at the time of determination of the District water supply management strategy. Adoption of the quarterly water supply strategy and budget is categorically exempt from the California

Environmental Quality Act (CEQA) requirements as per Article 19, Section 15301 (Class 1). A Notice of Exemption will be filed with the Monterey County Clerk's office, pending Board action on this item.

EXHIBITS

- 15-A** Quarterly Water Supply Strategy and Budget for CAW Main System: October - December 2015
- 15-B** Quarterly Water Supply Strategy and Budget for CAW Laguna Seca Subarea: October - December 2015
- 15-C** Quarterly Water Supply Strategy and Budget Report: October - December 2015

U:\staff\Boardpacket\2015\20150915\PublicHrngs\15\Item15.docx

**California American Water Main Distribution System
Quarterly Water Supply Strategy and Budget: October - December 2015**

Proposed Production Targets by Source and Projected Use in Acre-Feet

SOURCE/USE	MONTH			YEAR-TO-DATE		
	Oct-15	Nov-15	Dec-15	Oct-14 - Aug-15	% of YTD	% of Annual Budget
Source						
Carmel Valley Aquifer						
Upper Subunits (95-10)	0	0	35	965	NA	NA
Lower Subunits (95-10)	646	575	633	5,416	60.5%	55.7%
Lower Subunits (ASR)	0	0	145	215	14.9%	14.9%
Upper and Lower (Table 13)	0	0	24			
Total	646	575	837			
Seaside Groundwater Basin						
Coastal Subareas	400	300	100	2,209	122.7%	98.1%
ASR Recovery	0	0	0	0	NA	NA
Sand City Desalination	25	25	25	220	80.0%	73.3%
Total	425	325	125			
Use						
Customer Service (95-10 & SGB)	1,071	900	793			
ASR Injection	0	0	145			
Customer Service (Table 13)	0	0	24			
Total	1,071	900	962			

Notes:

1. The budget reflects "Average" inflow conditions and assumes that the monthly unimpaired inflows at the Sleepy Hollow Weir during the October-December 2015 period will equal 237, 637, and 2,324 AF, respectively. El Nino conditions have been observed heading onto WY 2016.
2. The annual budget period corresponds to the Water Year, which begins on October 1 and ends on September 30 of the following Calendar Year.
3. Total monthly production for "Customer Service" in CAW's main system was calculated by multiplying total annual production (11,954 AF) times the average percentage of annual production for October, November, and December (9.0%, 7.5%, and 6.6%, respectively). The annual production total was based on the assumption that production from the Coastal Subareas of the Seaside Groundwater Basin would not exceed 2,251 AF and production from Carmel River sources would not exceed 9,703 AF in WY 2016. The average production percentages were based on monthly data for customer service from WY 2006 to 2013.
4. Anticipated production for ASR injection is based on an average diversion rate of approximately 4,500 gallons per minute (gpm) or 19.9 AF per day from CAW's sources in the Carmel River Basin. "Total" monthly CAW "Use" includes water for customer service and water for injection into the Seaside Basin. This value is assumed in the event the WY becomes normal or wet through Dec 2015.
5. The production targets for CAW's wells in the Upper Subunits of the Carmel Valley Aquifer are set at 0 except as shown, based on CAW's goal to avoid use of these wells, during low flow periods. However, production could be higher under existing State water rights and interagency operating agreements.
6. The production target for CAW's wells in the Seaside Coastal Subareas in December is based on the assumption that sufficient flow will occur in the Carmel River at the targeted levels, to support ASR injection. It is planned that Coastal Subarea pumping will not occur, or will be proportionally reduced, if ASR injection does not occur at targeted levels.
7. The production targets for CAW's wells in the Seaside Coastal Subareas are based on the need for CAW to produce its full native water allocation during WY 2016 to be in compliance with SWRCB WRO No. 95-10.
8. It should be noted that monthly totals for Carmel Valley Aquifer sources may be different than those shown in MPWMD Rule 162, Table XV-3. These differences result from monthly target adjustments needed to be consistent with SWRCB WRO 98-04, which describes how the Cal-Am Seaside Wellfield is to be used to offset production in Carmel Valley during low-flow periods. Adjustments are also made to the Quarterly Budgets to ensure that compliance is achieved on an annual basis with MPWMD Rule 162 totals.
9. Table 13 values reflect source/use estimates based on SWRCB Permit 21330, which allows diversions from the CVA for "in Basin use" (3.25 AFD) when flows in the River exceed threshold values.

**California American Water Laguna Seca Subarea Distribution Systems
Quarterly Water Supply Strategy and Budget: October - December 2015**

Proposed Production Targets by Source and Projected Use in Acre-Feet

SOURCE/USE	MONTH			YEAR-TO-DATE		
	Oct-15	Nov-15	Dec-15	Oct-14 - Aug-15	% of YTD	% of Annual Budget
Source						
Seaside Groundwater Basin						
Laguna Seca Subarea	5	3	3	295	226.9%	200.7%
Other	0	0	0			
Use						
Customer Service	5	3	3	295		

Notes:

1. The annual budget period corresponds to the Water Year, which begins on October 1 and ends on September 30 of the following Calendar Year.
2. Total monthly production for "Customer Service" in CAW's Laguna Seca Subarea systems was calculated by multiplying total annual production (48 AF) times the average percentage of annual production October, November, and December (9.5%, 7.3%, and 5.7%, respectively). The annual production total was based on the assumption that production from the Laguna Seca Subarea of the Seaside Groundwater Basin would not exceed 48 AF. The average production percentages were based on monthly data for customer service from WY 2006 to 2013. The 48 AF annual production limit is specified in the Seaside Basin Adjudication Decision and is subject to change.
3. It should be noted that, based on recent historical use, actual monthly use will likely exceed the proposed monthly production target. In this context, the production targets represent the maximum monthly production that should occur so that CAW remains within its Standard Production Allocation for the Laguna Seca Subarea specified in the Seaside Decision. Accordingly, actual production beyond these production targets will be subject to replenishment assessment by the Seaside Basin Watermaster.
4. "Other" production sources refer to supplies transferred to Laguna Seca Subarea customers from CAW's Carmel River sources or water rights acquired from other producers in the Seaside Basin to produce additional water. For example, under emergency conditions, water can be transferred from sources that serve customers in CAW's main system, via an existing interconnection, to customers in CAW's Ryan Ranch system.

EXHIBIT 15-C**Quarterly Water Supply Strategy and Budget Report
California American Water
Main Water Distribution System: October - December 2015****1. Management Objectives**

The Monterey Peninsula Water Management District (District) desires to maximize the long-term production potential and protect the environmental quality of the Carmel River and Seaside Groundwater Basins. In addition, the District desires to maximize the amount of water that can be diverted from the Carmel River Basin and injected into the Seaside Groundwater Basin while complying with the instream flow requirements recommended by the National Marine Fisheries Service (NMFS) to protect the Carmel River steelhead population. Similarly, during the low-flow season, the District desires to recover most or all of the water that was previously injected into the Seaside Groundwater Basin, as well as a seasonally balanced amount of California American Water's (Cal-Am) full allocation of Seaside native groundwater. By meeting customer demand with as much as feasible of these two groundwater sources, Cal-Am will be able to maximally reduce its diversion from its Carmel River sources during the low-flow season. To accomplish these goals, a water supply strategy and budget for production within the Cal-Am Main and Laguna Seca Subarea water distribution systems is reviewed quarterly to determine the optimal strategy for operations, given the current hydrologic and system conditions.

2. Quarterly Water Supply Strategy: October - December 2015

On September 10, 2015, staff from the District, Cal-Am, the California Department of Fish and Wildlife (CDFW), and National Marine Fisheries Service (NMFS), and State Water Resources Control Board's – Division of Water Rights (SWRCB-DWR) met and discussed the proposed water supply strategy and related topics for the remainder of September 2015, and the October through December 2015 period. Currently, flow in the Carmel River is regulated by releases from storage at Los Padres Reservoir, though there was 0.53 cubic feet per second (cfs) of surface flow coming into the reservoir on September 1, 2015, it is likely being fully offset by surface evaporation off the reservoir. The intent under the original 2015 CDFW/Cal-Am/District Low Flow MOA was to sustain 1.6 cfs or more of flow to the Sleepy Hollow Weir at River Mile (RM) 17.64 through October 2015 and in November 2015, return to un-supplemented flows, i.e., run-of-the river conditions, estimated then to potentially be as much as 4.0 cfs.

Due major construction field dewatering and river re-route activities at the San Clemente Dam Reroute Project (SCDRRP), the interagency signatories to the 2015 Low Flow MOA agreed to continue to shift the flow target compliance point from its historic location at the MPWMD Sleepy Hollow Weir Gage (SHW) to the MPWMD Below Los Padres Gage (BLP) at RM 24.70. Because of the widely varying rates of supplemental flows being pumped out of the construction dewatering zone of the SCDRRP, it was not possible for Cal-Am to maintain a steady flow target at the SHW Gage. Additionally, the current lack of significant Los Padres Reservoir (LPR) inflow, higher than historical levels of flow depletion between reservoirs, and depleted LPR storage conditions due to the draw down required to install the new Steelhead Smolt Emigration Facility on Los Padres Dam, precluded the District recommending better flow targets and planning to supplement river flows past

EXHIBIT 15-C**Quarterly Water Supply Strategy and Budget Report
California American Water
Main Water Distribution System: October - December 2015**

the end of October. Flow in the Carmel River is continuous from the headwaters only to the vicinity of the Esquiline Road Bridge, in east Carmel Valley Village (RM 14.45). Flow goes subsurface for over two miles until it re-emerges above Boronda Road Bridge (RM 12.69), with approximately 2.1 cfs measured at the MPWMD Don Juan Gage in Garland Park (RM 10.8) on September 13, 2015, after which the wetted river front ends once again just below Robinson Canyon Road Bridge (RM 8.46). The river is becoming intermittent near Boronda Road Bridge, and we expect gradual dewatering to continue through at least September. Rainfall during Water Year (WY) 2015 to date through the end of August at San Clemente Dam in the upper watershed has totaled 16.04 inches or 76% of the long-term average at this site. Further, unimpaired runoff at San Clemente Dam for WY 2015 to date through the end of August has totaled approximately 22,158 acre-feet (AF) or about 33% of the long-term average for this site. WY 2015 represents the fourth year in the eighth hydrologic drought since 1902, with two consecutive “Dry” or “Critically Dry” years, and the second one with four consecutive “Dry” or “Critically Dry” years. The January to August 2015 flow conditions categorize near to median for a “Dry” year and are similar to conditions seen in 2012, which was the first year of the current four-year drought. However, weather forecasts are continuing to predict a high probability of WY 2016 being an El Nino Year.

Carmel River Basin: Given these conditions, it was agreed that it would be appropriate to use historical “Average” inflow conditions to assess Cal-Am’s operations during the October through December 2015 period. Thereafter, the rainfall-to-date through November 2015 will be used to select a Water Year Type for the following quarter, so as to more accurately assess Cal-Am’s operations and set monthly production targets for Cal-Am’s systems from January through September 2016.

To meet customer demand, Cal-Am would operate its wells in the Lower Carmel Valley in a downstream-to-upstream sequence, as needed. For the quarterly budget, it was agreed that Cal-Am would produce approximately 0 AF of groundwater for the months of October and November, and 35 AF for the month of December 2015 from its wells in the Upper Carmel Valley. These amounts are consistent with the interagency Low Flow Season MOA and Cal-Am management’s intent to minimize production in the Upper Carmel Valley at all times. However, production could legally be higher under Cal-Am’s existing State water rights, and the interagency Low Flow Season MOA, if the requisite minimum flow triggers are exceeded for five consecutive days.

Cal-Am may also be able to produce an estimated 24 AF in December for its customers under its recently acquired Table 13 Water Rights, identified for future approval in SWRCB Water Rights Decision 1632.

In addition, it was agreed that Cal-Am would produce approximately 646, 575, and 778 AF of groundwater from its wells in the Lower Carmel Valley during October, November, and December 2015, respectively.

EXHIBIT 15-C**Quarterly Water Supply Strategy and Budget Report
California American Water
Main Water Distribution System: October - December 2015**

Lastly, it was assumed that 145 AF of the total of 778 AF water planned to be diverted from the Carmel River Basin in December would be injected into the Seaside Groundwater Basin, if flows are sufficient to allow diversions, since the diversion season for the Aquifer Storage and Recovery (ASR) projects ended May 31, and resumes on December 1, 2015. The remainder of the long-term average diversions of 920 AF and 1050 AF per WY for ASR Phases 1 and 2 respectively, will be addressed in the Quarterly Water Budgets for January to May, 2016. If the minimum bypass flows defined in the joint MPWMD/Cal-Am Water Right for ASR Phase 1 and 2 are sufficient for any significant length of time after December 1, diversion to storage may begin.

Table 1 shows actual releases to date and projected monthly releases below Los Padres and San Clemente Reservoirs for the September through December 2015 period.

Seaside Groundwater Basin: It was also agreed that Cal-Am would produce 400, 300, and 100 AF of Seaside native groundwater in October, November, and December 2015, respectively, in order to better avoid having any unutilized carry-over water at the end of WY 2016. The 215 AF of water injected for storage in WY 2015 by ASR Phases 1 and 2 will be banked for recovery in the second half of WY 2016, in case the drought continues. The amount of ASR storage recovered in WY 2016 will depend the aforementioned banked amount and on the future ability to divert to storage for ASR in WY 2016. There is also a goal of producing an additional 25 AF of treated brackish groundwater from the Sand City Desalination Plant in each of these three months. If the Sand City Desalination Plant cannot make its monthly production targets, any of that amount of water that is needed to meet customer demand will be produced from a combination of Cal-Am wells in Seaside or the Lower Subunits of the Carmel Valley Aquifer.

It was also agreed that Cal-Am should produce only 5, 3, and 3 AF per month of groundwater from its wells in the Laguna Seca Subarea of the Seaside Basin for customers in the Ryan Ranch, Bishop, and Hidden Hills systems during October, November, and December 2015, respectively. It is recognized that, based on recent historical use, Cal-Am's actual production from the Laguna Seca Subarea during this period will likely exceed the proposed monthly targets, which are based on Cal-Am's allocation specified in the Seaside Basin Adjudication Decision. For example, in the October, November, and December 2014 period, Cal-Am actually produced 32, 23, and 20 AF from the Laguna Seca Subarea to meet customer demand in the Ryan Ranch, Bishop, and Hidden Hills systems. In this context, the production targets represent the maximum monthly production that should occur so that Cal-Am remains within its adjudicated allocation for the Laguna Seca Subarea. Accordingly, actual production beyond these production targets will be subject to a replenishment assessment by the Seaside Basin Watermaster.

ITEM: INFORMATIONAL ITEMS/STAFF REPORTS**17. LETTERS RECEIVED****Meeting Date:** September 21, 2015 **Budgeted:** N/A**From:** David J. Stoldt,
General Manager **Program/** N/A
Line Item No.:**Prepared By:** Arlene Tavani **Cost Estimate:** N/A**General Counsel Review:** N/A**Committee Recommendation:** N/A**CEQA Compliance:** N/A

A list of letters that were submitted to the Board of Directors or General Manager and received between August 12, 2015 and September 14, 2015 is shown below. The purpose of including a list of these letters in the Board packet is to inform the Board and interested citizens. Copies of the letters are available for public review at the District office. If a member of the public would like to receive a copy of any letter listed, please contact the District office. Reproduction costs will be charged. The letters can also be downloaded from the District's web site at www.mpwmd.net.

Author	Addressee	Date	Topic
Eric Sabolsice	David Stoldt	9/8/15	City of Monterey MPWMD Local Water Project Grant Application for Monterey Regional Water Recovery Study
Andrew Bell	MPWMD Board	9/2/15	Recommendations and Comments Regarding Rates Proposed by California American Water in A.15-07-019
Christina DeMaria	MPWMD Board	9/1/15	Request Appeal of Water Waste Violation
Nancy & Larry Foy	MPWMD Board	9/1/15	Vegetation Removal in Carmel River
Andy Bell	MPWMD Board	8/21/15	Recommendation Regarding Monterey Peninsula Water Supply Project; Recommendation Regarding Rates Proposed in A.15-07-019
Simón Salinas	David Stoldt	8/19/15	City of Monterey MPWMD Local Water Project Grant Application for Monterey Regional Water Recovery Study

ITEM: INFORMATIONAL ITEMS/STAFF REPORTS**18. COMMITTEE REPORTS****Meeting Date:** September 21, 2015 **Budgeted:** N/A**From:** David J. Stoldt,
General Manager **Program/
Line Item No.:** N/A**Prepared By:** Arlene Tavani **Cost Estimate:** N/A**General Counsel Review:** N/A**Committee Recommendation:** N/A**CEQA Compliance:** N/A

Attached for your review as **Exhibits 18-A through 18-C** are final minutes of the committee meetings listed below.

EXHIBITS**18-A** Final Minutes of August 4, 2015 Water Supply Planning Committee Meeting**18-B** Final Minutes of July 23, 2015 Water Demand Committee Meeting**18-C** Final Minutes of July 13, 2015 Administrative Committee Meeting



EXHIBIT 18-A

FINAL MINUTES Water Supply Planning Committee of the Monterey Peninsula Water Management District *August 4, 2015*

Call to Order The meeting was called to order at 3:05 pm in the MPWMD conference room.

Committee members present: Robert S. Brower, Sr. - Committee Chair
Jeanne Byrne
David Pendergrass

Committee members absent: None

Staff members present: David Stoldt, General Manager
Larry Hampson, Planning & Engineering Division Manager
Joe Oliver, Water Resources Division Manager
Arlene Tavani, Executive Assistant

Comments from the Public: No comments.

Action Items

1. **Consider Adoption of May 21, 2015 Committee Meeting Minutes**
On a motion by Pendergrass and second of Byrne, the May 21, 2015 committee meeting minutes were approved unanimously on a vote of 3 – 0 by Pendergrass, Byrne and Brower.

2. **Consider Development of Recommendation to the Board of Directors on Agreement with California American Water for Los Padres Dam Long-Term Plan**
On a motion by Byrne and second of Pendergrass, the committee recommended that the Board of Directors support an agreement with California American Water for completion of studies as outlined under items 1, 2, 3 and 4 of the staff report. The motion was approved unanimously on a vote of Byrne, Pendergrass and Brower.

Public Comment: Ian Crooks of California American Water (Cal-Am) expressed support for co-funding the feasibility study.

Discussion Items

3. **Discuss Process to Become Groundwater Sustainability Agency within Jurisdiction of MPWMD**
Stoldt recommended that the Water Management District take on the responsibility of Groundwater Sustainability Agency for the Carmel Valley Alluvial Aquifer, and delay

inclusion of the Seaside Groundwater Basin. The District believes that the Seaside Groundwater Basin boundary is different from the basin as defined by the Department of Water Resources. There are issues related to the boundary of the Seaside Groundwater Basin which must be resolved, before the District would take on the responsibility as GSA for that area. The District should not expand its boundaries to include all areas it considers to be within the Seaside Groundwater Basin. The District should coordinate with Monterey County Water Resources Agency to determine what the boundaries of the Seaside Groundwater Basin will be. It was suggested by a committee member that the Water Management District should form a GSA that includes the Seaside Groundwater Basin and Carmel Valley Alluvial Aquifer, and then later remove areas as appropriate. The resolution to form the GSA could state that in the future the District will seek to modify the boundary. No public comment was directed to the committee on this item.

4. Update on Pure Water Monterey Project

The estimated costs for the Pure Water Monterey project (PWM) should be available within a week. Those costs will be compared to Cal-Am's estimates for the desalination project that were specified in its application to the California Public Utilities Commission (CPUC). The best outcome would be that PWM costs are lower than desalination project costs, including operation and maintenance. Phase 1 of the CPUC process relates to desalination, Phase 2 is PWM, and Phase 3 is return flows and associated alternatives. If Phase 1 is delayed, decisions will need to be made regarding how to proceed with Phase 2.

5. Update on California-American Water Desalination Plant

Stoldt reported that the California Coastal Commission should consider the amended permit for the test slant well in September in Eureka, California. It may be preferable for Cal-Am to request the issue be heard at the October meeting in Long Beach. The CPUC has extended the comment period for the desalination project EIR, but the project timeline has not been adjusted. This causes uncertainty with respect to the timeline for the Pure Water Monterey Project.

6. Update on Local Water Projects

Stoldt updated the committee on the status of projects that may be submitted for grant funding by: Monterey Peninsula Airport District, Pebble Beach Company, the City of Pacific Grove and the Monterey County Fairgrounds.

Luke Coletti addressed the committee during the public comment period on this item. He stated that the State Water Resources Control Board (SWRCB) identified the Pacific Grove project financing plan as controversial, so the financing will be considered by the SWRCB in October.

7. Update on Alternative Desalination Project

No report. A representative from DeepWater Desal will present an update at the August 17, 2015 Board meeting.

Suggestions from the Public on Water Supply Project Alternatives

No comments.

Set Next Meeting Date

No date set.

Adjournment

The meeting was adjourned at 4:25 p.m.

U:\staff\Boardpacket\2015\20150915\InfoItems\18\Item18_Exhibit18-A.docx



EXHIBIT 18-B

FINAL MINUTES Water Demand Committee of the Monterey Peninsula Water Management District *July 23, 2015*

Call to Order

The meeting was called to order at 3:35 pm in the MPWMD conference room.

Committee members present: Kristi Markey, Chair
Jeanne Byrne
Brenda Lewis (arrived at 3:40 pm)

Committee members absent: None

Staff members present: David J. Stoldt, General Manager
Stephanie Locke, Water Demand Division Manager
Sara Reyes, Office Services Supervisor

District Counsel present: David Laredo

Comments from the Public: No comments.

Action Items

1. **Consider Adoption of April 30, 2015 Committee Meeting Minutes**
On a motion by Byrne and second of Markey, the committee approved the April 30, 2015 minutes on a vote of 2 – 0 by Byrne and Markey.

Director Lewis joined the meeting during discussion of item 2.A.

2. **Consider Actions Related to the Rebate Program**
 - A. **Lawn Removal Rebate for Del Mesa Carmel**
The committee discussed this issue and requested that staff collect more information for discussion at a future committee meeting. A summary of the committee discussion follows. (a) In the past, payment of rebates for replacement of fixtures was delayed until additional rebate funding could be obtained. The fund had been depleted by issuance of turf rebates. Funding should be utilized for rebates that will save the most water. (b) Our Rules and Regulations must be amended to allow issuance of rebates for multi-family residential complexes. (c) The greatest amount of water savings will be achieved through development of incentives for apartment complexes to retrofit washing machines. (d) A limit on the amount of rebate funds available for multi-family residential turf replacement could be established. That limit should be high enough to encourage turf replacement. (e) Suggest that for multi-family residential complexes the rebate could be based on a

2,500 square foot limit, or possibly a rebate of \$500 per unit up to a maximum of 50 units. (f) How many complexes in the District could take advantage of a turf rebate? That would help staff develop a budget. (g) Are there additional funds from the State of California that could be utilized for this type of rebate?

Public Comment: (a) Blake Joplin, Rana Creek Design, stated that Del Mesa Carmel has proposed several water saving methods including a laundry to landscape project, and replacement of turf and sprinkler heads. For development of a long-term plan for water reduction at Del Mesa Carmel, it would be helpful to know if a turf replacement rebate will be available. (b) Sal Francis, Maintenance Supervisor for Del Mesa Carmel, briefed the committee on water savings that have been achieved through turf replacement and installation of cisterns.

B. Lawn Removal Rebate in Areas that Overlie the Carmel Valley Alluvial Aquifer

The committee discussed this issue and determined that this should be incorporated into future consideration of rules regarding turf rebates for multi-family residential complexes. There was discussion about how these rebates could be funded. It was suggested that mitigation program funds or the Proposition 218 Water Supply Charge funds might be an appropriate funding source. It was also proposed that at the close of each year, any unspent rebate funds might be utilized for this purpose.

Discussion Items

3. Discuss Disbursement of Surplus Ultra High Efficiency Toilets to Local Recipients

The following suggestions were made during the committee discussion regarding distribution of the toilets. (a) Identify local public and non-profit housing agencies and send them letters offering the toilets. (b) Offer these toilets to low-income senior housing units. (c) Consider Habitat for Humanity, Beacon House, The Bridge, Interim, or senior housing in Seaside such as Del Monte Manor.

4. Update on Draft Water Conservation and Rationing Plan

The committee reviewed the draft plan and provided comments to staff. There was discussion about page 20 of the draft regulation, section 2.i related to maximum daily ration amounts. The committee agreed that the 65 gallons for a multi-family dwelling unit was too low. That amount should only be applied if the unit has no laundry. Staff noted that the 22 gallons per person ration was based on Cal-Am's recommendation that water use for multi-family should be set at two-thirds of single family use. The District's rule could abandon the multi-family category and assign 90 gallons per day per household. The committee discussed concerns with California American Water's proposal to move from a per-person rationing plan to a per-household plan.

5. Modification of Commercial Laundry Efficiency Standard

The committee requested that additional information be provided for consideration at a future meeting. During the committee discussion of this item, Stephanie Kister, Conservation Representative 1, explained that the water efficiency standard for installation of high-efficiency clothes washers in non-residential projects must be updated. Our regulations require a water factor of 5.0, but laundromats utilize top-loading

residential type washers and also multi-load machines called washer extractors. The 5.0 water factor cannot accurately be applied to washer extractors.

6. Development of Rule Amendment Ordinance

No discussion of this item. Staff will develop a draft ordinance and submit it to the committee at a future meeting.

Other Items: No discussion of other items.

Set Next Meeting Date: The committee members agreed to meet on Friday, August 28, 2015 at 2 pm.

Adjournment

The meeting was adjourned at 5:10 pm.

U:\staff\Boardpacket\2015\20150915\InfoItems\18\Item18_Exhibit18-B.docx



EXHIBIT 18-C

FINAL MINUTES **Monterey Peninsula Water Management District Administrative Committee July 13, 2015**

Call to Order

The meeting was called to order at 3:37 PM in the District Conference Room.

Committee members present: Andrew Clarke
 David Pendergrass

Committee members absent: Brenda Lewis

Staff present: David Stoldt, General Manager
 Suresh Prasad, Administrative Services Manager/Chief Financial Officer
 Stephanie Kister, Water Demand Manager
 Sara Reyes, Office Services Supervisor

Oral Communications

None

Approve Minutes of June 8, 2015 Committee Meeting

On a motion by Pendergrass and second by Clarke, the minutes of the June 8, 2015 meeting were approved on a vote of 2 to 0.

Items on Board Agenda for July 20, 2015

Consider Awarding \$125 Scholarships for Attendance at American Rainwater Catchment Systems Association (ARCSA) Rainwater Harvesting Workshop to Residents/Landscape Professionals within the MPWMD Boundaries

On a motion by Pendergrass and second by Clarke, the committee voted 2 to 0 to recommend the Board support District-issued scholarships for attendance at the American Rainwater Harvesting and Accreditation 200 Level Workshop August 26-27 at a not-to-exceed cost of \$2,100.

Consider Contract for Public Outreach and Communications Services with Thomas Brand Consulting for Fiscal Year 2015-2016

On a motion by Pendergrass and second by Clarke, the committee voted 2 to 0 to recommend the Board approve a contract with Thomas Brand Consulting for outreach services for the current fiscal year.

Consider Adoption of Resolution 2015-14 for State Revolving Fund Application for Pure Water Monterey Project

On a motion by Clarke and second by Pendergrass, the committee voted 2 to 0 to recommend the Board approve Resolution 2015-14.

Consider Adoption of Resolution 2015-15 Restating Intent to Reimburse Expenditures for Pure Water Monterey Project

On a motion by Clarke and second by Pendergrass, the committee voted 2 to 0 to recommend the Board approve Resolution 2015-15.

Consider Extension of Memorandum of Understanding Regarding Source Waters and Water Recycling – Amendment No. 2

On a motion by Clarke and second by Pendergrass, the committee voted 2 to 0 to recommend the Board approve Amendment 2 to the Memorandum of Understanding.

Other Business

Review Draft July 20, 2015 Board Meeting Agenda

The committee made no changes to the agenda.

Adjournment

The meeting was adjourned at 4:22 PM.

U:\staff\Boardpacket\2015\20150915\InfoItems\18\Item18_Exhibit18-C.docx

ITEM: INFORMATIONAL ITEM/STAFF REPORTS**19. MONTHLY ALLOCATION REPORT****Meeting Date:** September 21, 2015 **Budgeted:** N/A**From:** David J. Stoldt,
General Manager **Program:** N/A
Line Item No.:**Prepared By:** Gabriela Ayala **Cost Estimate:** N/A**General Counsel Review:** N/A**Committee Recommendation:** N/A**CEQA Compliance:** N/A

SUMMARY: As of August 31, 2015, a total of **25.830** acre-feet (**7.5%**) of the Paralta Well Allocation remained available for use by the Jurisdictions. Pre-Paralta water in the amount of **35.861** acre-feet is available to the Jurisdictions, and **30.479** acre-feet is available as public water credits.

Exhibit 19-A shows the amount of water allocated to each Jurisdiction from the Paralta Well Allocation, the quantities permitted in August 2015 (“changes”), and the quantities remaining. The Paralta Allocation had no debits in August 2015.

Exhibit 19-A also shows additional water available to each of the Jurisdictions and the information regarding the Community Hospital of the Monterey Peninsula (Holman Highway Facility). Additional water from expired or canceled permits that were issued before January 1991 are shown under “PRE-Paralta.” Water credits used from a Jurisdiction’s “public credit” account are also listed. Transfers of Non-Residential Water Use Credits into a Jurisdiction’s Allocation are included as “public credits.” **Exhibit 19-B** shows water available to Pebble Beach Company and Del Monte Forest Benefited Properties, including Macomber Estates, Griffin Trust. Another table in this exhibit shows the status of Sand City Water Entitlement.

BACKGROUND: The District’s Water Allocation Program, associated resource system supply limits, and Jurisdictional Allocations have been modified by a number of key ordinances. These key ordinances are listed in **Exhibit 19-C**.

EXHIBITS**19-A** Monthly Allocation Report**19-B** Monthly Entitlement Report**19-C** District’s Water Allocation Program Ordinances

EXHIBIT 19-A

**MONTHLY ALLOCATION REPORT
Reported in Acre-Feet
For the month of August 2015**

Jurisdiction	Paralta Allocation*	Changes	Remaining	PRE-Paralta Credits	Changes	Remaining	Public Credits	Changes	Remaining	Total Available
Airport District	8.100	0.000	5.197	0.000	0.000	0.000	0.000	0.000	0.000	5.197
Carmel-by-the-Sea	19.410	0.000	1.397	1.081	0.000	1.081	0.910	0.000	0.182	2.660
Del Rey Oaks	8.100	0.000	0.000	0.440	0.000	0.000	0.000	0.000	0.000	0.000
Monterey	76.320	0.000	0.203	50.659	0.000	0.030	38.121	0.000	3.661	3.894
Monterey County	87.710	0.000	10.284	13.080	0.000	0.000	7.827	0.000	1.891	12.175
Pacific Grove	25.770	0.000	0.000	1.410	0.000	0.312	15.874	0.000	0.228	0.540
Sand City	51.860	0.000	0.000	0.838	0.000	0.000	24.717	0.000	23.373	23.373
Seaside	65.450	0.000	8.749	34.438	0.000	34.438	2.693	0.000	1.144	44.331
TOTALS	342.720	0.000	25.830	101.946	0.000	35.861	90.142	0.000	30.479	92.170

Allocation Holder	Water Available	Changes this Month	Total Demand from Water Permits Issued	Remaining Water Available
Quail Meadows	33.000	0.000	32.199	0.801
Water West	12.760	0.000	8.352	4.408

* Does not include 15.280 Acre-Feet from the District Reserve prior to adoption of Ordinance No. 73.

EXHIBIT 19-B

**MONTHLY ALLOCATION REPORT
ENTITLEMENTS
Reported in Acre-Feet
For the month of August 2015**

Recycled Water Project Entitlements

Entitlement Holder	Entitlement	Changes this Month	Total Demand from Water Permits Issued	Remaining Entitlement/and Water Use Permits Available
Pebble Beach Co. ¹	241.240	0.040	11.736	229.504
Del Monte Forest Benefited Properties ² (Pursuant to Ord No. 109)	123.760	0.369	39.534	84.226
Macomber Estates	10.000	0.000	9.595	0.405
Griffin Trust	5.000	0.000	4.809	0.191
CAWD/PBCSD Project Totals	380.000	0.409	65.674	314.326

Entitlement Holder	Entitlement	Changes this Month	Total Demand from Water Permits Issued	Remaining Entitlement/and Water Use Permits Available
City of Sand City	165.00	0.000	3.572	161.428

Increases in the Del Monte Forest Benefited Properties Entitlement will result in reductions in the Pebble Beach Co. Entitlement.

EXHIBIT 19-C

District's Water Allocation Program Ordinances

Ordinance No. 1 was adopted in September 1980 to establish interim municipal water allocations based on existing water use by the jurisdictions. Resolution 81-7 was adopted in April 1981 to modify the interim allocations and incorporate projected water demands through the year 2000. Under the 1981 allocation, Cal-Am's annual production limit was set at 20,000 acre-feet.

Ordinance No. 52 was adopted in December 1990 to implement the District's water allocation program, modify the resource system supply limit, and to temporarily limit new uses of water. As a result of Ordinance No. 52, a moratorium on the issuance of most water permits within the District was established. Adoption of Ordinance No. 52 reduced Cal-Am's annual production limit to 16,744 acre-feet.

Ordinance No. 70 was adopted in June 1993 to modify the resource system supply limit, establish a water allocation for each of the jurisdictions within the District, and end the moratorium on the issuance of water permits. Adoption of Ordinance No. 70 was based on development of the Paralta Well in the Seaside Groundwater Basin and increased Cal-Am's annual production limit to **17,619** acre-feet. More specifically, Ordinance No. 70 allocated 308 acre-feet of water to the jurisdictions and 50 acre-feet to a District Reserve for regional projects with public benefit.

Ordinance No. 73 was adopted in February 1995 to eliminate the District Reserve and allocate the remaining water equally among the eight jurisdictions. Of the original 50 acre-feet that was allocated to the District Reserve, 34.72 acre-feet remained and was distributed equally (4.34 acre-feet) among the jurisdictions.

Ordinance No. 74 was adopted in March 1995 to allow the reinvestment of toilet retrofit water savings on single-family residential properties. The reinvested retrofit credits must be repaid by the jurisdiction from the next available water allocation and are limited to a maximum of 10 acre-feet. This ordinance sunset in July 1998.

Ordinance No. 75 was adopted in March 1995 to allow the reinvestment of water saved through toilet retrofits and other permanent water savings methods at publicly owned and operated facilities. Fifteen percent of the savings are set aside to meet the District's long-term water conservation goal and the remainder of the savings are credited to the jurisdictions allocation. This ordinance sunset in July 1998.

Ordinance No. 83 was adopted in April 1996 and set Cal-Am's annual production limit at **17,621** acre-feet and the non-Cal-Am annual production limit at **3,046** acre-feet. The modifications to the production limit were made based on the agreement by non-Cal-Am water users to permanently reduce annual water production from the Carmel Valley Alluvial Aquifer in exchange for water service from Cal-Am. As part of the agreement, fifteen percent of the historical non-Cal-Am production was set aside to meet the District's long-term water conservation goal.

Ordinance No. 87 was adopted in February 1997 as an urgency ordinance establishing a community benefit allocation for the planned expansion of the Community Hospital of the Monterey Peninsula (CHOMP). Specifically, a special reserve allocation of 19.60 acre-feet of production was created exclusively for the benefit of CHOMP. With this new allocation, Cal-Am's annual production limit was increased to **17,641** acre-feet and the non-Cal-Am annual production limit remained at **3,046** acre-feet.

Ordinance No. 90 was adopted in June 1998 to continue the program allowing the reinvestment of toilet retrofit water savings on single-family residential properties for 90-days following the expiration of Ordinance No. 74. This ordinance sunset in September 1998.

Ordinance No. 91 was adopted in June 1998 to continue the program allowing the reinvestment of water saved through toilet retrofits and other permanent water savings methods at publicly owned and operated facilities.

Ordinance No. 90 and No. 91 were challenged for compliance with CEQA and nullified by the Monterey Superior Court in December 1998.

Ordinance No. 109 was adopted on May 27, 2004, revised Rule 23.5 and adopted additional provisions to facilitate the financing and expansion of the CAWD/PBCSD Recycled Water Project.

Ordinance No. 132 was adopted on January 24, 2008, established a Water Entitlement for Sand City and amended the rules to reflect the process for issuing Water Use Permits.

EXHIBIT 19-A

MONTHLY ALLOCATION REPORT
Reported in Acre-Feet
For the month of August 2015

Jurisdiction	Paralta Allocation*	Changes	Remaining	PRE-Paralta Credits	Changes	Remaining	Public Credits	Changes	Remaining	Total Available
Airport District	8.100	0.000	5.197	0.000	0.000	0.000	0.000	0.000	0.000	5.197
Carmel-by-the-Sea	19.410	0.000	1.397	1.081	0.000	1.081	0.910	0.000	0.182	2.660
Del Rey Oaks	8.100	0.000	0.000	0.440	0.000	0.000	0.000	0.000	0.000	0.000
Monterey	76.320	0.000	0.203	50.659	0.000	0.030	38.121	0.000	3.661	3.894
Monterey County	87.710	0.000	10.284	13.080	0.000	0.000	7.827	0.000	1.891	12.175
Pacific Grove	25.770	0.000	0.000	1.410	0.000	0.312	15.874	0.000	0.228	0.540
Sand City	51.860	0.000	0.000	0.838	0.000	0.000	24.717	0.000	23.373	23.373
Seaside	65.450	0.000	8.749	34.438	0.000	34.438	2.693	0.000	1.144	44.331
TOTALS	342.720	0.000	25.830	101.946	0.000	35.861	90.142	0.000	30.479	92.170

Allocation Holder	Water Available	Changes this Month	Total Demand from Water Permits Issued	Remaining Water Available
Quail Meadows	33.000	0.000	32.199	0.801
Water West	12.760	0.000	8.352	4.408

* Does not include 15.280 Acre-Feet from the District Reserve prior to adoption of Ordinance No. 73.

EXHIBIT 19-C

District's Water Allocation Program Ordinances

Ordinance No. 1 was adopted in September 1980 to establish interim municipal water allocations based on existing water use by the jurisdictions. Resolution 81-7 was adopted in April 1981 to modify the interim allocations and incorporate projected water demands through the year 2000. Under the 1981 allocation, Cal-Am's annual production limit was set at 20,000 acre-feet.

Ordinance No. 52 was adopted in December 1990 to implement the District's water allocation program, modify the resource system supply limit, and to temporarily limit new uses of water. As a result of Ordinance No. 52, a moratorium on the issuance of most water permits within the District was established. Adoption of Ordinance No. 52 reduced Cal-Am's annual production limit to 16,744 acre-feet.

Ordinance No. 70 was adopted in June 1993 to modify the resource system supply limit, establish a water allocation for each of the jurisdictions within the District, and end the moratorium on the issuance of water permits. Adoption of Ordinance No. 70 was based on development of the Paralta Well in the Seaside Groundwater Basin and increased Cal-Am's annual production limit to **17,619** acre-feet. More specifically, Ordinance No. 70 allocated 308 acre-feet of water to the jurisdictions and 50 acre-feet to a District Reserve for regional projects with public benefit.

Ordinance No. 73 was adopted in February 1995 to eliminate the District Reserve and allocate the remaining water equally among the eight jurisdictions. Of the original 50 acre-feet that was allocated to the District Reserve, 34.72 acre-feet remained and was distributed equally (4.34 acre-feet) among the jurisdictions.

Ordinance No. 74 was adopted in March 1995 to allow the reinvestment of toilet retrofit water savings on single-family residential properties. The reinvested retrofit credits must be repaid by the jurisdiction from the next available water allocation and are limited to a maximum of 10 acre-feet. This ordinance sunset in July 1998.

Ordinance No. 75 was adopted in March 1995 to allow the reinvestment of water saved through toilet retrofits and other permanent water savings methods at publicly owned and operated facilities. Fifteen percent of the savings are set aside to meet the District's long-term water conservation goal and the remainder of the savings are credited to the jurisdictions allocation. This ordinance sunset in July 1998.

Ordinance No. 83 was adopted in April 1996 and set Cal-Am's annual production limit at **17,621** acre-feet and the non-Cal-Am annual production limit at **3,046** acre-feet. The modifications to the production limit were made based on the agreement by non-Cal-Am water users to permanently reduce annual water production from the Carmel Valley Alluvial Aquifer in exchange for water service from Cal-Am. As part of the agreement, fifteen percent of the historical non-Cal-Am production was set aside to meet the District's long-term water conservation goal.

Ordinance No. 87 was adopted in February 1997 as an urgency ordinance establishing a community benefit allocation for the planned expansion of the Community Hospital of the Monterey Peninsula (CHOMP). Specifically, a special reserve allocation of 19.60 acre-feet of production was created exclusively for the benefit of CHOMP. With this new allocation, Cal-Am's annual production limit was increased to **17,641** acre-feet and the non-Cal-Am annual production limit remained at **3,046** acre-feet.

Ordinance No. 90 was adopted in June 1998 to continue the program allowing the reinvestment of toilet retrofit water savings on single-family residential properties for 90-days following the expiration of Ordinance No. 74. This ordinance sunset in September 1998.

Ordinance No. 91 was adopted in June 1998 to continue the program allowing the reinvestment of water saved through toilet retrofits and other permanent water savings methods at publicly owned and operated facilities.

Ordinance No. 90 and No. 91 were challenged for compliance with CEQA and nullified by the Monterey Superior Court in December 1998.

Ordinance No. 109 was adopted on May 27, 2004, revised Rule 23.5 and adopted additional provisions to facilitate the financing and expansion of the CAWD/PBCSD Recycled Water Project.

Ordinance No. 132 was adopted on January 24, 2008, established a Water Entitlement for Sand City and amended the rules to reflect the process for issuing Water Use Permits.

ITEM: INFORMATIONAL ITEM/STAFF REPORTS**20. WATER CONSERVATION PROGRAM REPORT**

Meeting Date:	September 21, 2015	Budgeted:	N/A
From:	David J. Stoldt, General Manager	Program/ Line Item No.:	N/A
Prepared By:	Michael Boles	Cost Estimate:	N/A

Committee Recommendation: N/A**CEQA Compliance: N/A**

I. MANDATORY WATER CONSERVATION RETROFIT PROGRAM

District Regulation XIV requires the retrofit of water fixtures upon Change of Ownership or Use with High Efficiency Toilets (HET) (1.28 gallons-per-flush), 2.0 gallons-per-minute (gpm) Showerheads, 2.2 gpm faucet aerators, and Rain Sensors on all automatic Irrigation Systems. Property owners must certify the Site meets the District's water efficiency standards by submitting a Water Conservation Certification Form (WCC), and a Site inspection is often conducted to verify compliance.

A. Changes of Ownership

Information is obtained monthly from *Realquest.com* on properties transferring ownership within the District. The information is entered into the database and compared against the properties that have submitted WCCs. Details on **168** property transfers that occurred in August 2015 were entered into the database.

B. Certification

The District received **23** WCCs between August 1, 2015 and August 31, 2015. Data on ownership, transfer date, and status of water efficiency standard compliance were entered into the database.

C. Verification

In August, **76** properties were certified to verify compliance with Rule 144 (Retrofit Upon Change of Ownership or Use). Of the **76** inspections certified, **65 (86%)** were in compliance. **One** of the properties that passed inspection involved more than one visit to verify compliance with all water efficiency standards.

District inspectors are tracking toilet replacement with High Efficiency Toilets (HET) in place of ULF toilets. These retrofits are occurring in remodels and new construction, and are the toilet of choice for Rule 144 compliance. State law mandated the sale and installation of HET by January 1, 2014, with a phase-in period that began in 2010. The majority of toilets sold in California are HET.

Savings Estimate

Water savings from HET retrofits triggered by Rule 144 verified in August 2015 are estimated at **0.100** acre-feet annually (AFA). Water savings from retrofits that exceeded requirements (i.e., HETs to Ultra High Efficiency Toilets) is estimated at **0.220** AFA (22 toilets). Year-to-date estimated savings occurring as a result of toilet retrofits is **8.430** AFA.

D. Water Waste Enforcement

In response to the State's drought emergency conservation regulation effective August 1, 2014, the District has increased its Water Waste enforcement. The District has a Water Waste Hotline 831-658-5653 or an online form to report Water Waster occurrences at www.mpwmd.net or www.montereywaterinfo.org. There were **21** Water Waste responses during the past month. There was **one** repeated incident that resulted in a fine.

II. WATER DEMAND MANAGEMENT

A. Permit Processing

District Rule 23 requires a Water Permit application for all properties that propose to expand or modify water use on a Site, including New Construction and Remodels. District staff processed and issued **46** Water Permits in August 2015. **Four** Water Permits were issued using water entitlements (Macomber, Pebble Beach Company, Griffin Estates, etc). No Water Permit involved a debit to a Public Water Credit Account.

All Water Permits have a disclaimer informing applicants of the Cease and Desist Order against California American Water and that MPWMD reports Water Permit details to California American Water. All Water Permit recipients with property supplied by a California American Water Distribution System will continue to be provided with the disclaimer.

District Rule 24-3-A allows the addition of a second Bathroom in an existing Single-Family Dwelling on a Single-Family Residential Site. Of the **46** Water Permits issued in August, **seven** were issued under this provision.

B. Permit Compliance

District staff completed **46** Water Permit final inspections during August 2015. **Nine** of the final inspections failed due to unpermitted fixtures. Of the **33** properties that were in compliance, **32** passed on the first visit. In addition, **four** pre-inspections were conducted in response to Water Permit applications received by the District.

C. Deed Restrictions

District staff prepares deed restrictions that are recorded on the property title to provide notice of District Rules and Regulations, enforce Water Permit conditions, and provide notice of public access to water records. In April 2001, the District Board of Directors adopted a policy regarding the processing of deed restrictions. In the month of August, the District prepared **48** deed restrictions. Of the **46** Water Permits issued in August, **30 (65%)** required deed restrictions. District staff provided Notary services for **65** Water Permits with deed restrictions.

III. JOINT MPWMD/CAW REBATE PROGRAM

The Water Conservation Rebate Program is available for purchase of Qualifying Devices.

Participation in the rebate program is detailed in the following chart. The table below indicates the program summary for California American Water Company.

REBATE PROGRAM SUMMARY		August-2015				2015 YTD	1997 - Present	
I. Application Summary								
A.	Applications Received	168				1312	20057	
B.	Applications Approved	126				1043	15754	
C.	Single Family Applications	149				1212	18047	
D.	Multi-Family Applications	14				75	1017	
E.	Non-Residential Applications	5				25	238	
II. Type of Devices Rebated		Number of devices	Rebate Paid	Estimated AF	Gallons Saved	YTD Quantity	YTD Paid	YTD Est AF
A.	High Efficiency Toilet (HET)	19	1872.99	0.793212	258468.923	187	27216.91	7.806876
B.	Ultra Low Flush to HET	24	2349.98	0.240000	78204.240	387	22128.20	3.87
C.	Ultra HET	3	448.00	0.030000	9775.530	72	9662.83	0.72
D.	Toilet Flapper	0	0.00	0.000000	0.000	3	31.95	0
E.	High Efficiency Dishwasher	18	2250.00	0.054000	17595.954	129	16125.00	0.387
F.	High Efficiency Clothes Washer	59	29402.98	0.949900	309525.865	394	196526.86	6.3434
G.	Instant-Access Hot Water System	2	400.00	0.000000	0.000	12	2366.99	0
H.	On Demand Systems	1	100.00	0.000000	0.000	4	400.00	0
I.	Zero Use Urinals	0	0.00	0.000000	0.000	1	300.00	0.02
J.	High Efficiency Urinals	0	0.00	0.000000	0.000	0	0.00	0
K.	Pint Urinals	0	0.00	0.000000	0.000	2	492.12	0.04
L.	Cisterns	2	883.75	0.000000	0.000	25	7957.50	0
M.	Smart Controllers	3	460.00	0.000000	0.000	5	730.00	0
N.	Rotating Sprinkler Nozzles	0	0.00	0.000000	0.000	88	352.00	0
O.	Moisture Sensors	0	0.00	0.000000	0.000	0	0.00	0
P.	Lawn Removal & Replacement	2	3281.00	0.269042	87667.605	16	22461.00	1.91338
Q.	Graywater	0	0.00	0.000000	0.000	2	200.00	0
R.	Ice Machines	0	0.00	0.000000	0.000	0	0.00	0
III. Totals: Month; AF; Gallons; YTD		133	41448.70	2.336154	761238.117	1327	306951.36	21.100656
						2015 YTD	1997 - Present	
IV. Total Rebated: YTD; Program						306951.36	4717477.65	
V. Estimated Water Savings in Acre-Feet Annually*						21.100656	475.16449	

* Retrofit savings are estimated at 0.041748 AF/HET; 0.01 AF/UHET; 0.01 AF/ULF to HET; 0.003 AF/dishwasher, 0.0161 AF/residential washer; 0.116618 AF/commercial washer; 0.0082 AF/100 square feet of lawn removal.

ITEM: INFORMATIONAL ITEMS/STAFF REPORTS**21. CARMEL RIVER FISHERY REPORT****Meeting Date:** September 21, 2015 **Budgeted:** N/A**From:** David J. Stoldt,
General Manager **Program/** N/A
Line Item No.:**Prepared By:** Beverly Chaney **Cost Estimate:** N/A**General Counsel Review:** N/A**Committee Recommendation:** N/A**CEQA Compliance:** N/A

AQUATIC HABITAT AND FLOW CONDITIONS: During August 2015, flow conditions in the lower river were inadequate for migration of all steelhead life stages. Mean daily streamflow at the MPWMD Highway 1 (HW 1) gage was 0.0 cubic feet-per-second (cfs) with 0.0 total acre-feet (AF) of runoff, while flow at the Sleepy Hollow Weir ranged from 2 to 10 cfs (mean 5 cfs) and 337 AF of runoff.

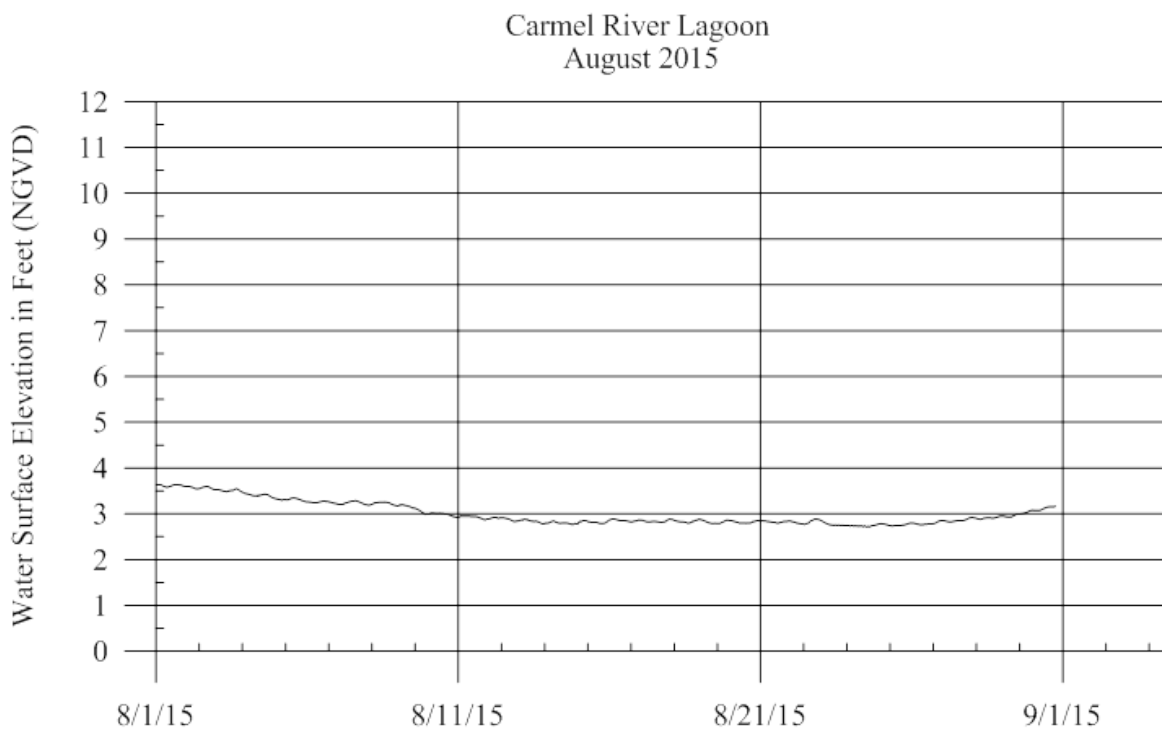
By the end of August, the lower Carmel River was mostly dry to California American Water's (Cal-Am) Berwick Wells in mid-valley, at river mile (RM) 8.2. The 1.2 mile reach between Boronda Road Bridge (RM 12.7) and upper DeDampierre Park (RM 13.9) was also dry or intermittent. All major tributaries below San Clemente Dam (SCD) remained dry at their confluences with the Carmel River.

During August, 0.05 inches of rainfall were recorded at Cal-Am's SCD gage. The rainfall total for WY 2015 (which started on October 1, 2014) is 16.04 inches, or 76% of the long-term year-to-date average of 21.03 inches.

CARMEL RIVER LAGOON: On December 12, 2014, the lagoon filled and opened to the sea for the first time since May 24, 2013. After a final breaching in late March 2015, the beach berm built up and the lagoon started slowly filling. The lagoon's water-surface elevation (WSE) in August ranged from 2.8 to 3.6 feet above mean sea level due to evaporation and wave overtopping (see graph below).

Water-quality profiles were conducted in mid-August at five lagoon sites. Conditions were generally "poor" for steelhead rearing with water temperatures between 70 - 75 degrees Fahrenheit. Dissolved oxygen (DO) was variable, ranging from 0.1 - 17 mg/L, and salinity levels ranged from 2 - 11 parts per thousand (ppt).

JUVENILE STEELHEAD RESCUES: Rescues began on May 22, 2015 as flow at the HW 1 Gage dropped below 10 cfs. Through the end of August, 1,557 steelhead have been rescued between HW1 and DeDampierre Park in Carmel Valley Village including: 1,333 YOY, 150 age 1+ juveniles, 66 resident adults, and eight mortalities (0.5%). All rescued fish were transported and released into the Carmel River in the Cachagua reach below Los Padres Dam.



U:\staff\Boardpacket\2015\20150915\InfoItems\21\Item21.docx

ITEM: INFORMATIONAL ITEMS/STAFF REPORT**22. MONTHLY WATER SUPPLY AND CALIFORNIA AMERICAN WATER PRODUCTION REPORT****Meeting Date: September 21, 2015** **Budgeted: N/A****From: David J. Stoldt,** **Program/ N/A**
General Manager **Line Item No.:****Prepared By: Jonathan Lear** **Cost Estimate: N/A****General Counsel Review: N/A****Committee Recommendation: N/A****CEQA Compliance: N/A**





Exhibit 22-A shows the water supply status for the Monterey Peninsula Water Resources System (MPWRS) as of **September 1, 2015**. This system includes the surface water resources in the Carmel River Basin, the groundwater resources in the Carmel Valley Alluvial Aquifer and the Seaside Groundwater Basin. **Exhibit 22-A** is for Water Year (WY) 2015 and focuses on four factors: rainfall, runoff, storage, and steelhead. The rainfall and Streamflow values are based on measurements in the upper Carmel River Basin at San Clemente Dam.

Water Supply Status: As shown, rainfall through **August 2015** totaled **0.05 inches** and brings the cumulative rainfall total for WY 2015 to **16.04 inches**, which is **76%** of the long-term average through **August**. Estimated unimpaired runoff during **August 2015** totaled **0 acre-feet (AF)** and brings the cumulative runoff total for WY 2015 to **22,158 AF**, which is **33%** of the long-term average through **August**. Usable storage, which includes surface and groundwater, was **28,250 AF**, or **97%** of the long-term average through **August**. This storage equates to **75%** of system capacity. In addition, **7 adult steelhead** were counted in the fish ladder at San Clemente Dam through **August**.

Production Compliance: Under State Water Resources Control Board (SWRCB) Cease and Desist Order No. 2009-0060, California American Water (Cal-Am) is allowed to produce no more than 9,945 AF of water from the Carmel River in WY 2015. In addition, under the Seaside Basin Decision, Cal-Am is allowed to produce 2,259AF of water from the Coastal Subareas and 48 AF from the Laguna Seca Subarea of the Seaside Basin in WY 2015. Altogether, Cal-Am is currently allowed to produce 12,196 AF from Carmel River and Seaside Coastal sources for customers in its main Monterey system and 48 AF from the Laguna Seca Subarea for customers in Ryan Ranch, Hidden Hills, and Bishop Systems (not adjusted for ASR recovery or Sand City Desalination). For WY 2015 through **August**, Cal-Am has produced **9,105 AF** from the Carmel River, Seaside Basin, Sand City Desalination, and ASR recovery, for customer use. This water production is **1,965 AF** or **17.8 % less** than the target specified for Cal-Am's production from the MPWRS for WY 2015 through **August**. A breakdown of Cal-Am's production for WY 2015 through **August** is included as **Exhibit 22-B**. Cal-Am's production from the Carmel River Basin is reduced for diversions that are made for injection into the Seaside Basin; Cal-Am's "native" Seaside Basin production is reduced for injected water recovery. For WY 2015 through **August**, **215 AF** of Carmel River Basin groundwater have been diverted for Seaside Basin injection; **0 AF** have been recovered for customer use. **Exhibit 22-C** shows production breakdown from all sources for all uses. Some of the values in this report may be revised in the future as Cal-Am finalizes their production values and monitoring data.

EXHIBITS**22-A** Water Supply Status: **September 1, 2015****22-B** Monthly Cal-Am Diversions from Carmel River and Seaside Groundwater Basins:
Water Year 2015**22-C** Monthly Cal-Am production by source: WY 2015

EXHIBIT 22-A

Monterey Peninsula Water Management District Water Supply Status September 1, 2015					
Factor	Water Year 2015 Oct - Aug 15	Average To Date	Percent of Average	Water Year 2014 Oct - Aug 14	
	Rainfall (Inches)	16.04	21.03	76%	10.42
	Runoff (Acre-Feet)	22,158	67,681	33%	6,970
	Storage (Acre-Feet)	28,250	29,030	97%	26,030
	Steelhead (Adults) (Juveniles)	7	383 ---	1.7% ---	0 --

Notes:

1. Rainfall and runoff estimates are based on measurements at San Clemente Dam. Annual rainfall and runoff at San Clemente Dam average 21.3 inches and 68,400 acre-feet, respectively. Annual values are based on the water year that runs from October 1 to September 30 of the following calendar year. The rainfall and runoff averages at the San Clemente Dam site are based on records for the 1922-2014 and 1902-2014 periods, respectively.
2. The rainfall and runoff totals are based on measurements through **August 2015**.
3. Storage estimates refer to usable storage in the Monterey Peninsula Water Resources System (MPWRS) that includes surface water in Los Padres and San Clemente Reservoirs and ground water in the Carmel Valley Alluvial Aquifer and in the Coastal Subareas of the Seaside Groundwater Basin. The storage averages are end-of-month values and are based on records for the 1989-2014 period. The storage estimates are end-of-month values for **August 2015**.
4. The maximum usable storage capacity for the MPWRS at this time, with the flashboard in at Los Padres Dam and no capacity at San Clemente Dam, is 37,639 acre-feet.
5. The adult steelhead count refers to the number of sea-run adults (> 15 inches) that have migrated up the fish ladder at San Clemente Dam in Water Year 2015. The juvenile count refers to the number of juveniles that were rescued by District staff from drying reaches of the Carmel River and its tributaries in Water Year 2015. The adult count average is based on records for the 1994-2014 period.

California American Water Production Distributed by Associated Water Rights: Water Year 2015

(All Values in Acre-Feet)

	Carmel River Water Diverted by Cal-Am for Customer Service Under 95-10 Rights ¹	Seaside Groundwater Diverted by Cal-Am from Coastal Subareas for Customer Service Under Adjudicated Rights ⁴	Seaside Groundwater Diverted by Cal-Am from Laguna Seca Subarea for Customer Service Under Adjudicated Rights ⁴	Total Seaside Basin Adjudicated Diversions for Customer Service ⁴	Total Production Under 95-10 Rights and Seaside Basin Adjudicated Rights ^{1,3}	Carmel River Water Diverted by Cal-Am for ASR Injection Under 20808A and C Rights ²	Seaside Groundwater Recovered by Cal-Am for Customer Service Under ASR Rights ⁴	Desalinated Water from Sand City Plant
	Limit: 9,725 acre-feet ²	Limit: 2,251 acre-feet	Limit: 48 acre-feet	Limit: 2,299 acre-feet	Limit: 12,024 acre-feet	Limit: 5,326 acre-feet	Target: 215 acre-feet	Target: 300 acre-feet
Oct-14	614	279	32	311	925	0	0	17
Nov-14	559	149	23	172	731	0	0	20
Dec-14	470	159	20	179	649	113	0	8
Jan-15	681	32	24	56	737	0	0	26
Feb-15	541	117	20	137	678	102	0	14
Mar-15	688	53	26	79	767	0	0	29
Apr-15	574	223	26	249	823	0	0	18
May-15	699	88	26	114	813	0	0	29
Jun-15	449	374	30	405	854	0	0	26
Jul-15	475	440	33	473	948	0	0	10
Aug-15	632	296	33	330	961	0	0	24
Sep-15								
Total	6,381	2,209	295	2,504	8,885	215	0	220

California American Water Limit Adjustments to Comply with Associated Water Rights : Water Year 2015

(All Values in Acre-Feet)

	Carmel River Water Diverted by Cal-Am for Customer Service Under 95-10 Rights ¹	Carmel River Water Diverted by Cal-Am for ASR Injection Under 20808 Rights ³	Total Water Diverted from Carmel River for Customer Service and Injection	Seaside Groundwater Recovered by Cal-Am for Customer Service Under ASR Rights ⁵	Desalinated Water from Sand City Plant ²	Total Adjustment to 95-10 Water Right	95-10 Water Right Adjusted Monthly	Total Production for Customer Service from MPWRS and Sand City Desal
	acre-feet	acre-feet	acre-feet	acre-feet	acre-feet	acre-feet	acre-feet	acre-feet
Oct-14	614	0	614	0	17	17	9,928	942
Nov-14	559	0	559	0	20	20	9,907	751
Dec-14	470	113	583	0	8	8	9,899	657
Jan-15	681	0	681	0	26	26	9,873	763
Feb-15	541	102	643	0	14	14	9,859	691
Mar-15	688	0	688	0	29	29	9,830	796
Apr-15	574	0	574	0	18	18	9,813	841
May-15	699	0	699	0	29	29	9,784	841
Jun-15	449	0	449	0	26	26	9,758	879
Jul-15	475	0	475	0	10	10	9,749	958
Aug-15	632	0	632	0	24	24	9,725	985
Sep-15								
Total	6,381	215	6,596	0	220	220		9,105

Notes:

- "95-10 Rights" refer to water rights that were recognized by the State Water Resources Control Board (SWRCB) in Order No. WR 95-10 in July 1995 and assigned to California American Water. The rights total 3,376 acre-feet annually (AFA).
- "20808A Rights" refer to water rights that are held jointly by MPWMD and Cal-Am for the Phase 1 ASR project. "ASR" refers to Aquifer Storage and Recovery. "20808A" refers to Water Right Permit 20808A that was issued by the SWRCB in November 2007, for a maximum annual diversion of 2,426 AF. "20808C" refers to water rights permit 20808C, issued in November 2011 for a maximum annual diversion of 2,900AF.
- "Adjudicated Rights" refer to groundwater rights determined by the Superior Court of Monterey County in March 2006 and a mended in February 2007. These limits are subject to change by action of the Seaside Basin Watermaster and were updated by the Watermaster on November 30, 2011.

Quarterly Water Budget Targets vs. Rule 162: Water Year 2015

(All Values in Acre Feet)

Quarterly Budget											Rule 162		Production
95-10 Monthly Budget	ASR Diversion for Injection	Total Carmel River Diversions for Customer Service and ASR Injection	Seaside Adjudication Monthly Budget (Coastal)	Seaside Adjudication Monthly Budget (Laguna Seca)	Seaside Adjudication Monthly Budget Combined	ASR Recovery Budget	Sand City Desal Budget	Monthly Production for Customer Use Target ⁵	End of Month Production Adopted	End of Month Cumulative to date	MPWRS to date		
acre-feet	acre-feet	acre-feet	acre-feet	acre-feet	acre-feet	acre-feet	acre-feet	acre-feet	acre-feet	acre-feet	acre-feet		
1st Oct-14	667	0	667	400	5	405	0	25	1,097	1,097	1,097	942	
Qtr Nov-14	593	0	593	300	3	303	0	25	921	921	2,019	751	
Dec-14	684	145	829	100	3	103	0	25	812	812	2,831	657	
2nd Jan-15	686	230	916	100	3	103	0	25	814	814	3,643	763	
Qtr Feb-15	635	320	955	100	2	102	0	25	762	762	4,406	691	
Mar-15	739	345	1,084	100	3	103	0	25	867	867	5,273	796	
3rd Apr-15	905	100	1,005	0	3	3	0	25	933	933	6,206	841	
Qtr May-15	1,106	100	1,206	0	5	5	0	25	1,136	1,136	7,341	841	
Jun-15	1,149	0	1,149	0	5	5	0	25	1,179	1,179	8,521	879	
4th Jul-15	953	0	953	301	6	307	0	25	1,285	1,285	9,805	958	
Qtr Aug-15	834	0	834	400	5	405	0	25	1,264	1,264	11,069	985	
Sep-15											12,243		

California American Water Production vs. Water Budget and Water Right Limits: Water Year 2015

(All Values in Acre Feet)

Cal-Am Production vs. Quarterly Water Budget Targets												Cal-Am Production vs. EOM Totals	
95 - 10 Production for Customer Use vs. Monthly Targets		Seaside Coastal		Laguna Seca		Seaside Combined		Sand City Desal		Cal-Am Production vs. Rule 162			
Monthly Comparison		Monthly Comparison		Monthly Comparison		Monthly Comparison		Monthly Comparison		Year to Date			
acre-feet under	% Under	acre-feet under	% under	acre-feet under	% under	acre-feet under	% under	acre-feet under	% under	acre-feet under	% under		
1st Oct-14	53	0	121	0	-27	-5	94	0	8	0	155	14.1%	
Qtr Nov-14	34	0	151	1	-20	-7	131	0	5	0	170	18.4%	
Dec-14	214	0	-59	0	-17	-6	-76	-1	17	1	155	19.1%	
2nd Jan-15	5	0	68	2	-21	-7	47	0	-1	0	51	6.3%	
Qtr Feb-15	94	0	-17	0	-18	-9	-35	0	11	0	71	9.3%	
Mar-15	51	0	47	1	-23	-8	24	0	-4	0	71	8.2%	
3rd Apr-15	331	0	-223	-1	-23	-8	-246	-82	7	0	92	9.9%	
Qtr May-15	407	0	-88	-1	-21	-4	-109	-22	-4	0	295	25.9%	
Jun-15	700	1	-374	-1	-25	-5	-400	-80	-1	0	300	25.4%	
4th Jul-15	478	1	-139	0	-27	-5	-166	-1	15	1	327	25.5%	
Qtr Aug-15	202	0	104	0	-28	-6	75	0	1	0	279	22.1%	
Sep-15													
Annual Statistics	AF Remaining 3,344	% Remaining 34.4%	AF Remaining 42	% Remaining 1.9%	AF Remaining -247	% Remaining -513.7%	AF Remaining -205	% Remaining -8.9%	AF Remaining 80	% Remaining 26.7%	1,965	17.8%	

- "Target" refers to the maximum amount of water that Cal-Am will try to recover each year for customer service as part of the Phase 1 and 2 ASR Project. The actual amount of water that is recovered will depend on the amount injected during a particular water year and previous water years.
- Monthly Budget Target numbers from Quarterly Budget Meetings.
- Budget Target vs. Rule 162 used for the purpose of tracking compliance with MPWMD water rationing rules.
- Water Production vs. Water Budget and Water Rights Limits are tracked for compliance with Order 2009-0060 and Seaside Adjudication.
- Production from ASR and Sand City Desalination plant reduce 95-10 water right.

California American Water Production by Source: Water Year 2015

	Carmel Valley Wells ¹						Seaside Wells ²						Total Wells			Sand City Desal		
	Actual		Anticipated ³		Under Target		Actual		Anticipated		Under Target		Actual	Anticipated	Acre-Feet Under Target	Actual	Anticipated	Under Target
	Upper acre-feet	Lower acre-feet	Upper acre-feet	Lower acre-feet	Upper acre-feet	Lower acre-feet	Coastal acre-feet	LagunaSeca acre-feet	Coastal acre-feet	LagunaSeca acre-feet	Coastal acre-feet	LagunaSeca acre-feet	acre-feet	acre-feet	acre-feet	acre-feet	acre-feet	acre-feet
Oct-14	0	614	0	667	0	53	279	32	400	5	121	-27	925	1,072	147	17	25	8
Nov-14	0	559	0	593	0	34	149	23	300	3	151	-20	731	896	165	20	25	5
Dec-14	87	497	35	649	-52	152	159	20	100	3	-59	-17	762	787	25	8	25	17
Jan-15	136	546	0	686	-136	140	32	24	100	3	68	-21	737	789	52	26	25	-1
Feb-15	153	490	0	635	-153	145	117	20	100	2	-17	-18	780	737	-43	14	25	11
Mar-15	175	513	35	739	-140	226	53	26	100	3	47	-23	767	877	110	29	25	-4
Apr-15	117	457	0	918	-117	461	223	26	100	3	-123	-23	823	1,021	198	18	25	7
May-15	182	517	0	1,094	-182	577	88	26	125	5	37	-21	813	1,224	411	29	25	-4
Jun-15	17	431	0	1,112	-17	681	374	30	150	5	-224	-25	854	1,267	414	26	25	-1
Jul-15	98	377	0	1,352	-98	975	440	33	208	6	-232	-27	948	1,566	618	10	25	15
Aug-15	0	632	0	1,140	0	508	296	33	400	5	104	-28	961	1,545	584	24	25	1
Sep-15																		
To Date	965	5631	70	9585	-895.01	3954	2209	295	2083	43	-126	-252	9100	11781	2681	220	275	55

Total Production: Water Year 2015

	Actual	Anticipated	Acre-Feet Under Target
Oct-14	942	1,097	155
Nov-14	751	921	170
Dec-14	770	812	42
Jan-15	763	814	51
Feb-15	793	762	-31
Mar-15	796	902	106
Apr-15	841	1,046	205
May-15	841	1,249	408
Jun-15	879	1,292	413
Jul-15	958	1,591	633
Aug-15	985	1,570	585
Sep-15			
To Date	9,320	12,056	2,736

1. Carmel Valley Wells include upper and lower valley wells. Anticipate production from this source includes monthly production volumes associated with SBO 2009-60, 20808A, and 20808C water rights. Under these water rights, water produced from the Carmel Valley wells is delivered to customers or injected into the Seaside Groundwater Basin for storage.
2. Seaside wells anticipated production is associated with pumping native Seaside Groundwater (which is regulated by the Seaside Groundwater Basin Adjudication Decision) and recovery of stored ASR water (which is prescribed in a MOA between MPWMD, Cal-Am, California Department of Fish and Game, National Marine Fisheries Service, and as regulated by 20808C water right).
3. Current "anticipated" water budget reflects "Normal" Carmel River inflow conditions and monthly distribution of production based on long-term averages for the Cal-Am system.



Supplement to 9/21/2015 MPWMD Board Packet

Attached are copies of letters received between August 11, 2015 and September 14, 2015 . These letters are also listed in the September 21, 2015 Board packet under Letters Received.

Author	Addressee	Date	Topic
Eric Sabolsice	David Stoldt	9/8/15	City of Monterey MPWMD Local Water Project Grant Application for Monterey Regional Water Recovery Study
Andrew Bell	MPWMD Board	9/2/15	Recommendations and Comments Regarding Rates Proposed by California American Water in A.15-07-019
Christina DeMaria	MPWMD Board	9/1/15	Request Appeal of Water Waste Violation
Nancy & Larry Foy	MPWMD Board	9/1/15	Vegetation Removal in Carmel River
Andy Bell	MPWMD Board	8/21/15	Recommendation Regarding Monterey Peninsula Water Supply Project; Recommendation Regarding Rates Proposed in A.15-07-019
Simón Salinas	David Stoldt	8/19/15	City of Monterey MPWMD Local Water Project Grant Application for Monterey Regional Water Recovery Study

U:\Arlene\word\2015\BoardMeetings\StaffNotes\LettersReceived\20150921.docx



511 Forest Lodge Rd. Suite 100
Pacific Grove, CA 93950

P 831.646.3291
F 831.375.4367

September 8, 2015

*Recvd.
SEP 11 2015*

David J. Stoldt
General Manager
Local Project Application
Monterey Peninsula Water Management District
PO Box 85
Monterey, CA 93942-0085

RE: City of Monterey MPWMD Local Water Project Grant Application for Monterey
Regional Water Recovery Study

Dear Mr. Stoldt:

This letter is written in support of the City of Monterey's application for grant funding to conduct a Monterey Regional Water Recovery Study to examine the feasibility of creating a Peninsula-wide water recovery and reclamation system and possibilities for sources, including finding uses of storm water flows to reduce ocean pollution. This study is the first step toward implementing capital improvements to accomplish the task of providing a reliable local source of water and will positively impact the cities of Pacific Grove, Monterey, and Seaside, Presidio of Monterey, Naval Post Graduate School, Monterey Peninsula Regional Parks District, Monterey County, and the PCA.

We strongly support this application and request that you do the same.

Sincerely,

A handwritten signature in blue ink, appearing to read "Eric Sabolsice".

Eric Sabolsice
Director of Operations
Coastal Division

3079 Hermitage Road
Pebble Beach, CA 93953

September 2, 2015

California Public Utilities Commission:

**The Commissioners
and
Administrative Law Judge Gary Weatherford**

via:

CPUC Public Advisor
505 Van Ness Avenue, Room 2103
San Francisco, CA 94102

SUBJECT: Recommendations and Comments Regarding Rates Proposed by California American Water in A.15-07-019

Dear Commissioners:

I wish to comment on California American Water's (Cal-Am) Application 15-07-019 (Application).

Rates Proposed in A.15-07-019

Recommendations: In order for Cal-Am to recover costs in a more reasonable manner, I suggest that the Public Utilities Commission first determine what amount of costs not recouped due to conservation is reasonable for Cal-Am to recover. This is an extremely important first step. Water conservation was demanded not only by the State Water Resources Control Board via its 2009 Cease and Desist Order against Cal-Am (Order WR 2009-0060) but also statewide by order of the Governor of California due to the ongoing drought. Prudence should be used in balancing the mandates of conservation and the obedience of Cal-Am customers against the bottom line of Cal-Am. Then, I recommend that the proposed service charge and commodity rate increases be instituted in a more equitable way. One manner of doing so would be to propose the same percentage increases for all service charges and commodity rates, for all classes of customers. I also recommend that the current rules regarding the number of water use units allowed a residential customer in each tier based on number of occupants, lot size, etc., should be sustained.

Background

The drastic increase in the service charge proposed for residential users unfairly places the burden of additional costs on users who are conserving water and are therefore billed in the lower tiers. For Single Family Residential Users with a 5/8" meter, Table 8 of the July 8, 2015

Public Utilities Commission
September 2, 2015
Page 2

Direct Testimony of Sherrene P. Chew shows a current charge of \$9.67/month + a proposed increase of \$6.86 = \$16.53/month total, an increase of 70.94%. Table 1 of Ms. Chew's Direct Testimony indicates that charges for residential meter rates are proposed to increase from 70.94% for a 5/8" meter to 350% for 6" and 8" meters. Having the percentage increase of the service charge be so much greater than the commodity charge increase causes the total monthly cost to customers in lower use categories to increase precipitously, particularly when compared with those customers who use more water.

In addition, proposing rates that would result in average increases for residential users of between 21.84% and 28.97% while average non-residential rates would **decrease** by 14.38% is an affront to the majority of users in the Monterey Peninsula areas. *[Source of percentage increases: "Notice of California American Water's Request To Increase Water Rates and Change the Emergency Conservation and Rationing Plan (A.15-07-019)," mailed to Cal-Am customers and received by me on July 27, 2015]* This discrepancy is not adequately explained in the Application.

The Notice cited in the previous paragraph states that the proposed changes to the rate design are intended to encourage more efficient water use. Having the service charge increase by between 71% and 350% while the commodity rates are proposed to be increased by 33.7% (as indicated in Table 4 of Ms. Chew's Direct Testimony) would mean that those using less water would pay a higher percentage increase than those using more. This, in effect, would unfairly punish those using less water.

Cal-Am Incorrectly Claims the Current Rate Design Is Overly Complex and Bills Are Difficult To Understand

Recommendations: The application process itself is complex enough without adding complexities introduced by Cal-Am. In order to make it possible for the public and anyone else other than Cal-Am, I suggest the following:

1. Have Cal-Am prepare and provide tables clearly showing the following information:
 - a. Current and proposed service charge for each category of water user (Single-Family Residential, Multi-Family Residential, Low Income Customers, and Non-Residential), by meter size, for each of the two seawater desalination project production capacities shown in the current application (dollars per month).
 - b. Current and proposed water commodity costs for each category of water user, for each tier (dollars per 100 cubic feet and/or dollars per 100 gallons).
 - c. Current and proposed units of water use proposed to be charged at each tier for each category of water user. For Single-Family Residential users, a listing of factors such as household size (number of occupants), lot size and numbers of

Public Utilities Commission
September 2, 2015
Page 3

livestock, and how these factors affect the number of units allowed a customer for each tier, should be provided. I believe the current rules should be sustained. The above information will allow customers and others to make independent calculations of the costs that would result from Cal-Am's proposals. It will also allow customers and others to check Cal-Am's calculations.

- 2. Direct Cal-Am to switch back to a water unit measure of 100 cubic feet, in place of the current 10 cubic feet.**
- 3. Have Cal-Am correct all references to water use based on "cfs" to "cf." Thus, "cfs," "10 cfs," "tens of cfs", and "\$/tens of cfs" should be changed to "cf", "100 cf" or "CCF", "100s of cf", and "\$/CCF", respectively. Perhaps also have Cal-Am spell out "cubic feet" for clarity.**
- 4. Have Cal-Am clearly state and use a consistent factor for converting from cubic feet to gallons and vice-versa (7.50 gallons per cubic foot, 7.48 gallons per cubic foot, or a more accurate factor if Cal-Am desires). This factor should be shown on each table that contains water use and/or commodity charges in terms of both gallons and cubic feet.**
- 5. Direct Cal-Am to restore to its customer bills a bar graph showing monthly use for the most recent 13 months. Such a graph was shown on Cal-Am bills prior to about December 2013.**

Background

Cal-Am states in its Application that "[t]he [current] rate design is far too complex, which makes bills difficult to understand and causes customer concern and outcry" (Application, page 4, first full paragraph). The current rate design and bills are not complex and difficult to understand for the majority of Cal-Am customers. Cal-Am's Monterey Peninsula area residents are well-informed of the current rate structure. They understand the current rate structure and the reasons for it and are well accustomed to it, even though many believe the costs are too high.

One major factor that makes Cal-Am's Application difficult to understand is that the rates being proposed are difficult to locate. Having the various proposals shown in a format that is accessible and understandable would be a significant improvement.

Whatever complexities exist on Cal-Am bills are not related to the current rate design. Instead, they are self-imposed by Cal-Am. For instance, in all of my bills prior to my bill dated February 16, 2010 for the period January 8 to February 8, 2010, the unit of water consumption shown was 100 cubic feet. Starting with that bill, the unit of water consumption was changed to 10 cubic feet. This change caused unnecessary "complexity." Customers were accustomed to the 100-cubic-foot measure. If Cal-Am wants to have a more detailed measure of water use, they should use a decimal point, so that water use can be reported to the nearest tenth of a 100-cubic-foot (CCF) accuracy (0.1 CCF = 10 cubic feet). The 100-cubic-foot measure is the standard measure employed by water utilities in the United States. I can find no other water utility in the world that uses a 10-cubic-foot measure.

Public Utilities Commission
 September 2, 2015
 Page 4

A more recent significant change in Cal-Am bills occurred with my bill dated November 15, 2013 for service from October 9 to November 7, 2013. Prior bills provided a bar graph showing the most recent 13 months of "Water Usage Consumption." This graph allowed me to see the variations in my consumption amounts. Starting with my November 15, 2013 bill, water use for only the same billing period in the prior year is provided. Thus, if I wish to see my pattern of use, I must refer to each monthly bill to find the water use amount. The bar graph that was formerly provided was a handy and useful feature.

Other sources of complexity instituted by Cal-Am appear in its Application. In several places in the Direct Testimony of Jeffrey T. Linam and the Direct Testimony of Sherrene P. Chew, consumption quantities are shown in terms of "cfs", "10 cfs," "tens of cfs" and "\$/tens of cfs". *[These appear in Attachment 1 to the Direct Testimony of Jeffrey T. Linam and in Tables 4, 5, 6, and 7 in the Direct Testimony of Sherrene P. Chew.]* I believe what is meant is cubic feet or ten cubic feet: "cf", "10 cf", "tens of cf" and "\$/tens of cf." "Cfs" is an acronym commonly used in water science and industry to indicate "cubic feet per second," a measure of flow rate, not volume.

In addition, when converting from cubic feet to gallons, Cal-Am appears to use different conversion factors in various places in its Application and in information mailed to customers. The calculations appear to be based on a conversions varying from of 7.48 gallons per cubic foot 7.50 gallons per cubic foot. And in at least one place in the Application the calculation is clearly inaccurate: In Table 4 of the Direct Testimony of Sherrene P. Chew, for Tier 3, the conversion for a current rate of \$1.6768 per ten cubic feet (not "tens of cfs"!) should probably yield a rate of \$2.2417 per CGL (100 gallons), not \$2.4217 per CGL.

Thank you for your attention.

Sincerely,



Andrew M. Bell

cc: ✓ Board of Directors
 Monterey Peninsula Water Management District
 P.O. Box 85
 Monterey, CA 93942-0085

Carmel Woman's Club
P.O. Box 2674
Carmel, CA 93921

RECEIVED
SEP 14 2015
MPWMD

Monterey Peninsula Water Management District
5 Harris Court
Monterey, CA 93940

September 1, 2015

To the District Board,

We respectfully request to appeal the flagrant Water Waste violation imposed on the Carmel Woman's Club. We work very hard to be good neighbors within our community and take water conservation very seriously.

Unfortunately several of the emitters within our irrigation system malfunctioned allowing water to spray onto the hardscape and run into the street. The amount of water lost was fairly small as demonstrated by our water bill. Once the problem was brought to our attention we corrected it immediately. We are dedicated to water conservation during this drought.

We are a non-profit organization whose primary purpose is to provide charitable benefit to our community. We raise money through membership and fundraising. We provide the use of our club house to other non-profits, award scholarships to women returning to college, and provide grants to non-profits which help children and the elderly. We run our club on a small budget and paying this additional fine would be a hardship for us.

Thank you for your consideration.

Sincerely,



Christina DeMaria, Treasurer
Carmel Woman's Club

Re: 08172015002

September 1, 2015

Water Management District of the Monterey Peninsula
5 Harris Court, Bldg. G
Monterey, CA. 93940


Dear Board President and Directors:

As a resident of Carmel Valley, Hacienda Carmel to be exact, I am pleased to learn from our association manager, Robert Hedberg that you have agreed to begin work on the invasive vegetation along overgrown areas of the Carmel River, and the sandbars that have built up along the river. This issue is of great concern to me personally, and many of our residents. We experienced the 100 year flood in 1995 and only hope that this does not occur again.

This senior community of three (300) condominiums lost the use of 240 condominiums for many months after the last flood because of flood damage caused by the Carmel River. Your prompt attention into this matter is most important. We have done our due diligence and are putting you on notice that a real problem exists in the Carmel River with an abundance of vegetation that you have allowed to exist for several years. Since your agency has the authority to do work in the Carmel River we are putting you on notice of the potential damage that could happen to our property.

Thank you in advance for taking this issue seriously and performing your duties. We can only pray for rain, but hopefully, not a flood situation.

Regards,


Nancy and Larry Foy
182 Hacienda Carmel
Carmel, CA 93923

cc: Robert Hedberg, Carmel Community Association General Manager
Hacienda Carmel Board of Directors
Farmers Insurance - Monterey

3079 Hermitage Road
Pebble Beach, CA 93953

August 21, 2015

Board of Directors
California American Water
1033 B Avenue, Suite 200
Coronado, CA 92118

**SUBJECT: Recommendation Regarding Monterey Peninsula Water Supply Project;
Recommendation Regarding Rates Proposed in A.15-07-019**

Dear President MacLean and Board Members Lynch, Murray, Norton, Vallejo, and Zarazua:

I wish to add my comments below to those made during the August 19, 2015 forum you hosted at Chautauqua Hall in Pacific Grove, California.

Recommendation Regarding Monterey Peninsula Water Supply Project

Given that there are a number of uncertainties with the success of the Monterey Peninsula Water Supply Project (MPWSP), I suggest you do more to assure a back-up plan in case of failure, most importantly a failure of the slant well intake. Failure of the proposed subsurface intake system could be due to a failure of the intake facilities themselves, excessive groundwater drawdowns near the intake facilities, low salinity intake water, a successful legal challenge by Salinas Valley groundwater users, or other reason.

One clear way of reducing the risk of pursuing a single project is to **formally meet with the proponents of one or both of the seawater desalination projects now being pursued in Moss Landing, DeepWater Desal and The People's Moss Landing Water Desalination Project. If Cal-Am were to gain an understanding of these projects, it would allow a smoother transition to an alternative to its seawater desal project Cal-Am is currently pursuing in the Marina area, were the MPWSP not to succeed.** Of course, either of the Moss Landing projects would require ownership and operation by a public entity, in compliance with Monterey County regulations, and Cal-Am would then be a customer, not an owner, of the project.

Recommendation Regarding Rates Proposed in A.15-07-019

The drastic increase in the service charge for residential users (example for 5/8" meter as shown in Table 8 of the July 8, 2015 Direct Testimony of Sherrene P. Chew: current charge of \$9.67/month + proposed increase of \$6.86 = \$16.53/month total, an increase of 70.94%) unfairly places the burden of additional costs on users who are currently in the lower tiers and those who are conserving water.

Board of Directors, California American Water
August 21, 2015
Page 2

In addition, proposing rates that would result in average increases for residential users of between 21.84% and 28.97% while average non-residential rates would decrease by 14.38% is an affront to the majority of users in the Monterey Peninsula areas.

In order to recover costs in a more reasonable manner, I suggest that you realign your proposed service charge and commodity rate increases in a more equitable way. One manner of doing so would be to propose the same percentage increases for all service charges and commodity rates, for all classes of customers.

Thank you for your attention.

Sincerely,



Andrew M. Bell

cc: ✓ Board of Directors
Monterey Peninsula Water Management District
P.O. Box 85
Monterey, CA 93942-0085

MONTEREY COUNTY



BOARD OF SUPERVISORS

FERNANDO ARMENTA, *District 1*

JOHN M. PHILLIPS, *District 2*

SIMÓN SALINAS, *Chair, District 3*

JANE PARKER, *Vice Chair, District 4*

DAVE POTTER, *District 5*

August 19, 2015

David J. Stoldt
General Manager
Local Project Application
Monterey Peninsula Water Management District
PO Box 85
Monterey, CA 93942-0085

RECEIVED

AUG 25 2015

MPWMD


RE: City of Monterey MPWMD Local Water Project Grant Application for Monterey Regional Water Recovery Study

Dear Mr. Stoldt:

This letter is written in support of the City of Monterey's application for grant funding to conduct a Monterey Regional Water Recovery Study to examine the feasibility of creating a Peninsula-wide water recovery and reclamation system and possibilities for sources, including finding uses of storm water flows to reduce ocean pollution. This study is the first step toward implementing capital improvements to accomplish the task of providing a reliable local source of water and will positively impact the cities of Pacific Grove, Monterey, and Seaside, Presidio of Monterey, Naval Post Graduate School, Monterey Peninsula Regional Parks District, Monterey County, and the PCA.

We strongly support this application and request that you do the same.

Sincerely,


Simón Salinas
Chair, Board of Supervisors

Cc Monterey County Board of Supervisors
Lew C. Bauman, CAO, Monterey County
Nicholas E. Chiulos, Assistant CAO, Monterey County
Carl Holm, Acting Director Resources Management Agency, Monterey County
Robert Murdoch, RMA-Public Works Director, Monterey County
Charles J. McKee, County Counsel, Monterey County
David Chardavoyne, General Manager, Monterey County Water Resources Agency
Clerk of the Board, Monterey County