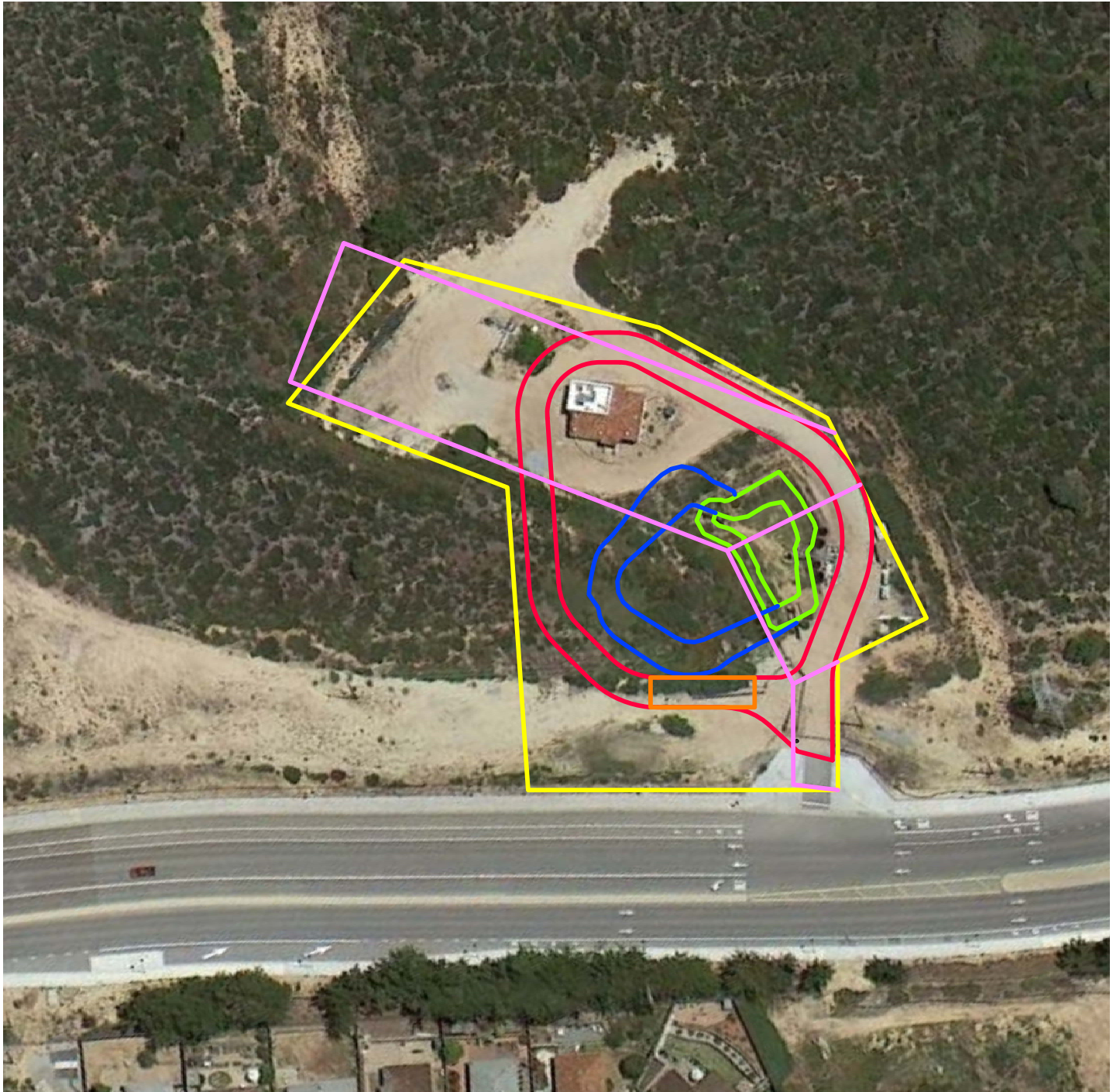
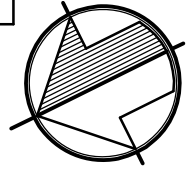


LEGEND

- PROPOSED MPWMD PARCEL ———
- EXISTING MPWMD PARCEL ———
- ALT 5 ACCESS ROAD ———
- CHEMICAL LOADING RACK ———
- EXISTING POND ———
- NEW POND ———

NEW LAND ACQUIRED	0.88 ACRES
LAND DEEDED BACK TO CITY	0.06 ACRES



Creegan+D'Angelo
INFRASTRUCTURE
ENGINEERS

225 Cannery Row, Suite H
Monterey, CA 93940
Tel (831) 373-1333
Fax (831) 373-0733

www.cdengineers.com

PROPOSED EXPANSION

SANTA MARGARITA WELL SITE

DATE: 06-20-13
C+D JOB: 710005.00

SCALE: 1"=100'
SHEET 1 OF 1