

EXHIBIT 24-A

District Organization Chart
June 2016

District Financial Structure

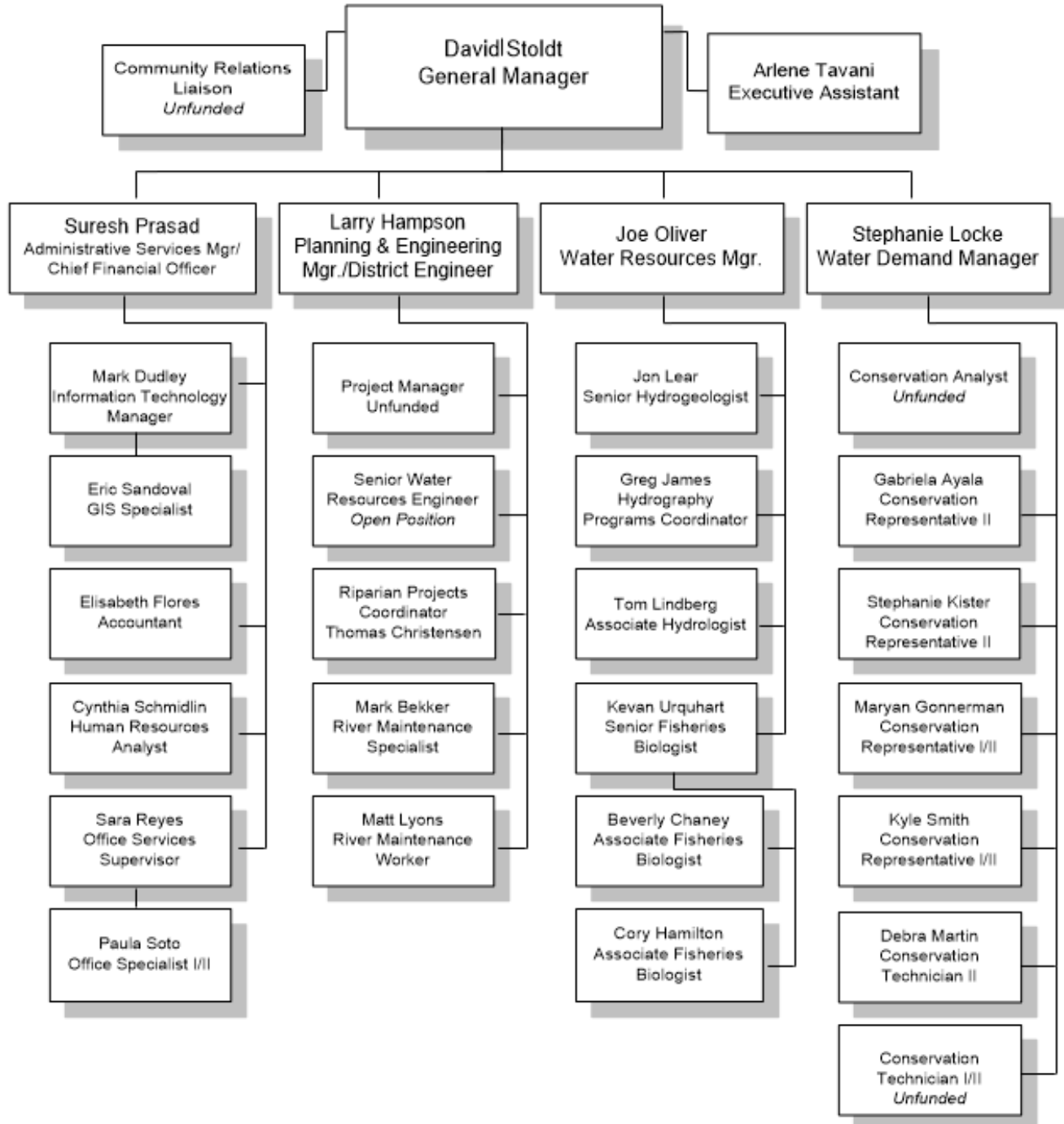


EXHIBIT 24-A

Current

MONTEREY PENINSULA WATER MANAGEMENT DISTRICT
STATEMENT OF REVENUES, EXPENDITURES AND CHANGES IN FUND BALANCES –
GOVERNMENTAL FUNDS
FOR THE YEAR ENDED JUNE 30, 2018
(WITH SUMMARIZED TOTALS FOR JUNE 30, 2017)

	Water Supply	Conservation	Mitigation	2018 Total	2017 Total
REVENUES:					
Property taxes	\$ 1,924,320	\$ –	\$ –	\$ 1,924,320	\$ 1,817,206
Water supply charge	3,405,008	–	–	3,405,008	3,391,354
User fees	808,039	1,378,362	2,972,424	5,158,825	1,156,364
Connection charges, net of refunds	522,167	–	–	522,167	370,255
Permit fees	–	296,502	20,810	317,312	243,787
Project reimbursements	5,583,786	461,641	19,776	6,065,203	1,390,561
Investment income	31,347	15,940	14,049	61,336	35,111
Legal fee reimbursements	–	5,370	–	5,370	–
Recording fees	–	17,887	–	17,887	–
Mitigation revenue	–	–	–	–	–
Miscellaneous	2,258	–	19,251	21,509	–
Grants	–	20,000	135,021	155,021	–
Total revenues	<u>12,276,925</u>	<u>2,195,702</u>	<u>3,181,331</u>		
EXPENDITURES:					
Personnel:					
Salaries	918,724	598,311			
Employee benefits and other personnel	367,183				
Travel and supplies:					

Three Cost Centers:

- Water Supply
- Conservation
- Mitigation

Goal was to have organizational structure better match financial structure

EXHIBIT 24-A

District Organization Chart
June 2019

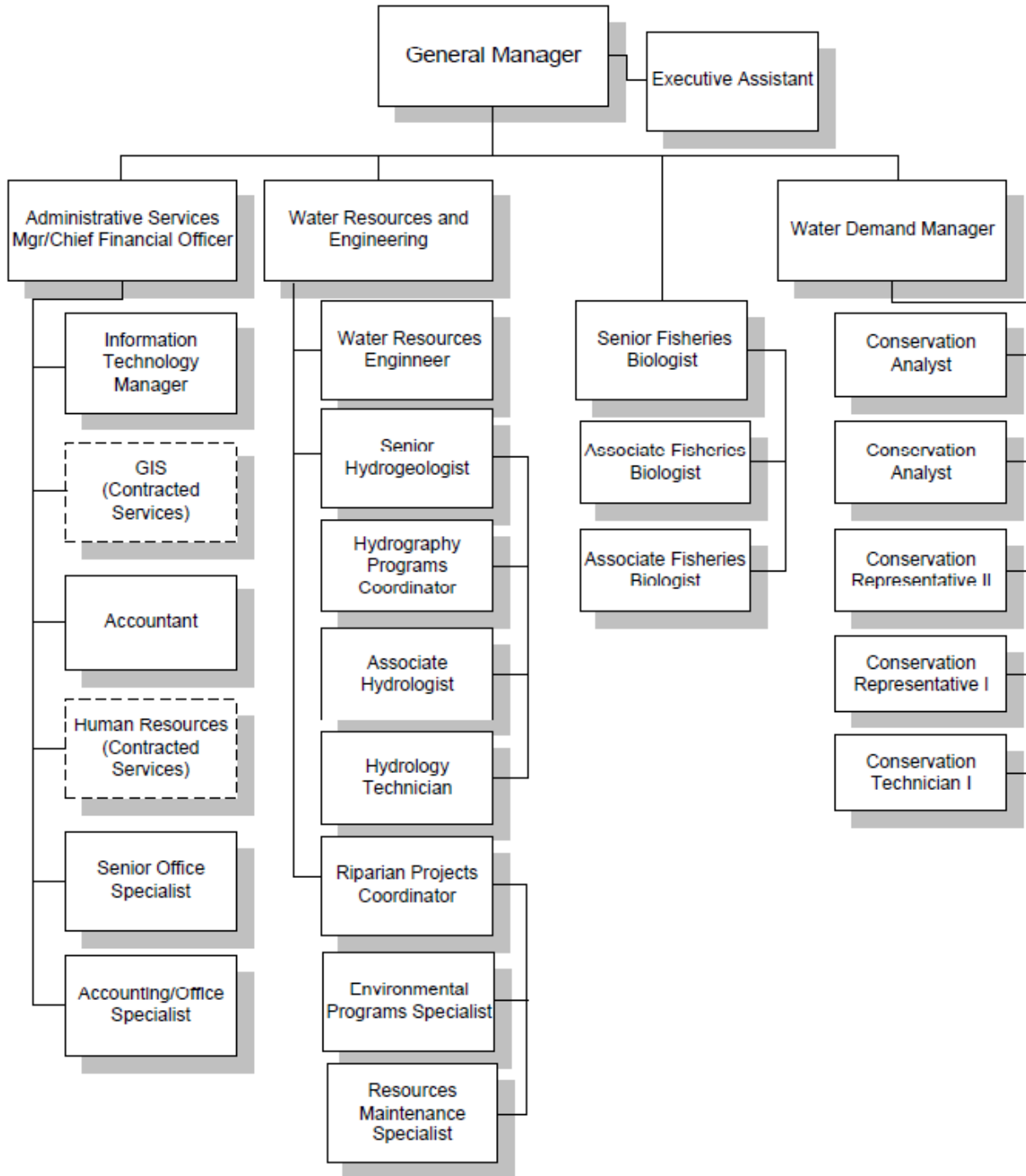


EXHIBIT 24-A

District Organization Chart
Proposed – 2020

