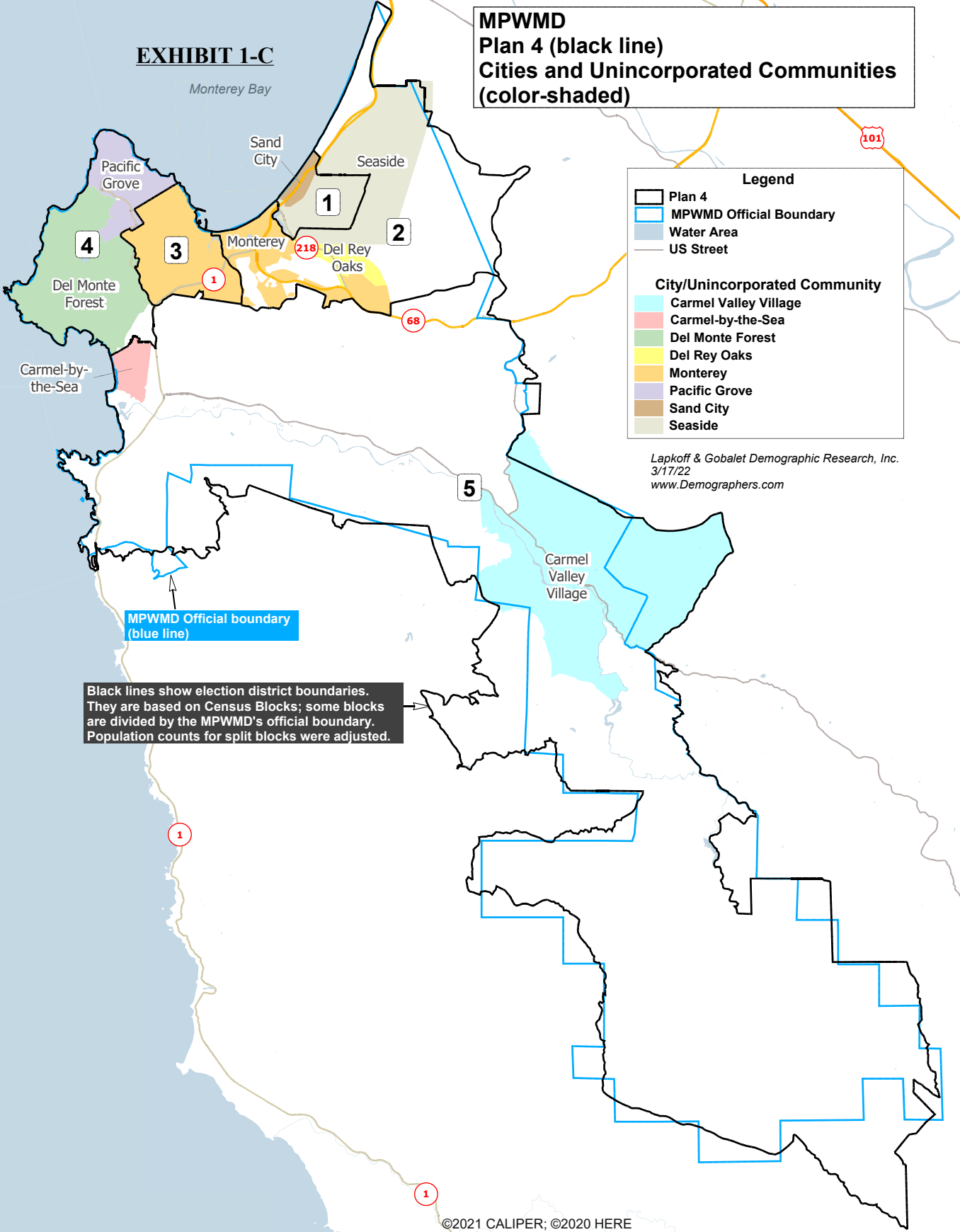


EXHIBIT 1-C

Monterey Bay

MPWMD Plan 4 (black line) Cities and Unincorporated Communities (color-shaded)



Legend

- Plan 4
- MPWMD Official Boundary
- Water Area
- US Street

City/Unincorporated Community

- Carmel Valley Village
- Carmel-by-the-Sea
- Del Monte Forest
- Del Rey Oaks
- Monterey
- Pacific Grove
- Sand City
- Seaside

Lapkoff & Gobalet Demographic Research, Inc.
3/17/22
www.Demographers.com

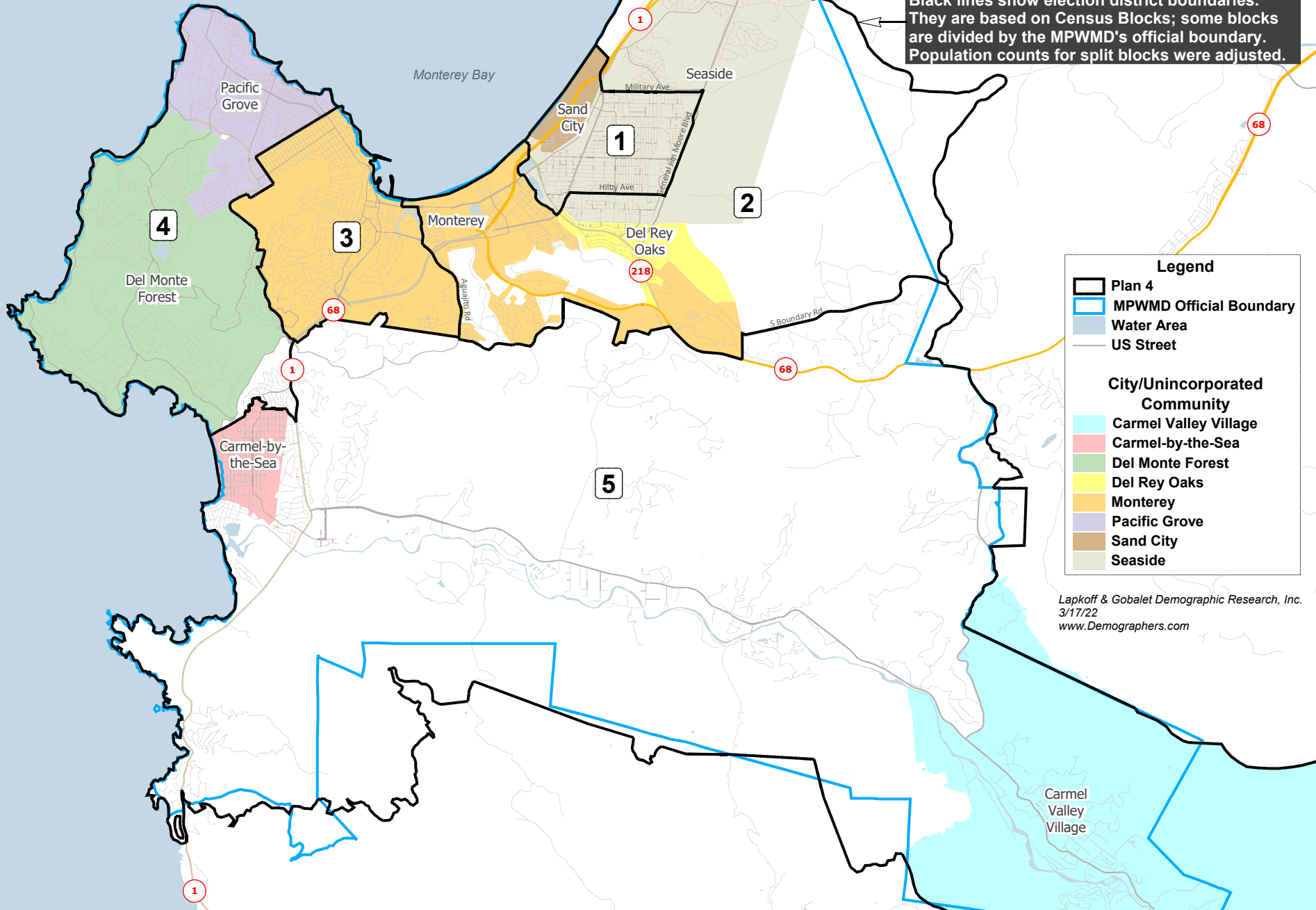
MPWMD Official boundary (blue line)

Black lines show election district boundaries. They are based on Census Blocks; some blocks are divided by the MPWMD's official boundary. Population counts for split blocks were adjusted.

**MPWMD
 Cities and Unincorporated Communities (color-shaded)
 Plan 4 (black line)**

Blue line shows the MPWMD's official boundary

Black lines show election district boundaries. They are based on Census Blocks; some blocks are divided by the MPWMD's official boundary. Population counts for split blocks were adjusted.



Legend

- Plan 4
- MPWMD Official Boundary
- Water Area
- US Street

City/Unincorporated Community

- Carmel Valley Village
- Carmel-by-the-Sea
- Del Monte Forest
- Del Rey Oaks
- Monterey
- Pacific Grove
- Sand City
- Seaside

Lapkoff & Gobalet Demographic Research, Inc.
 3/17/22
www.Demographers.com

MPWMD Director Divisions Adopted 2002 (color-shaded) Plan 4 (black line)

Legend

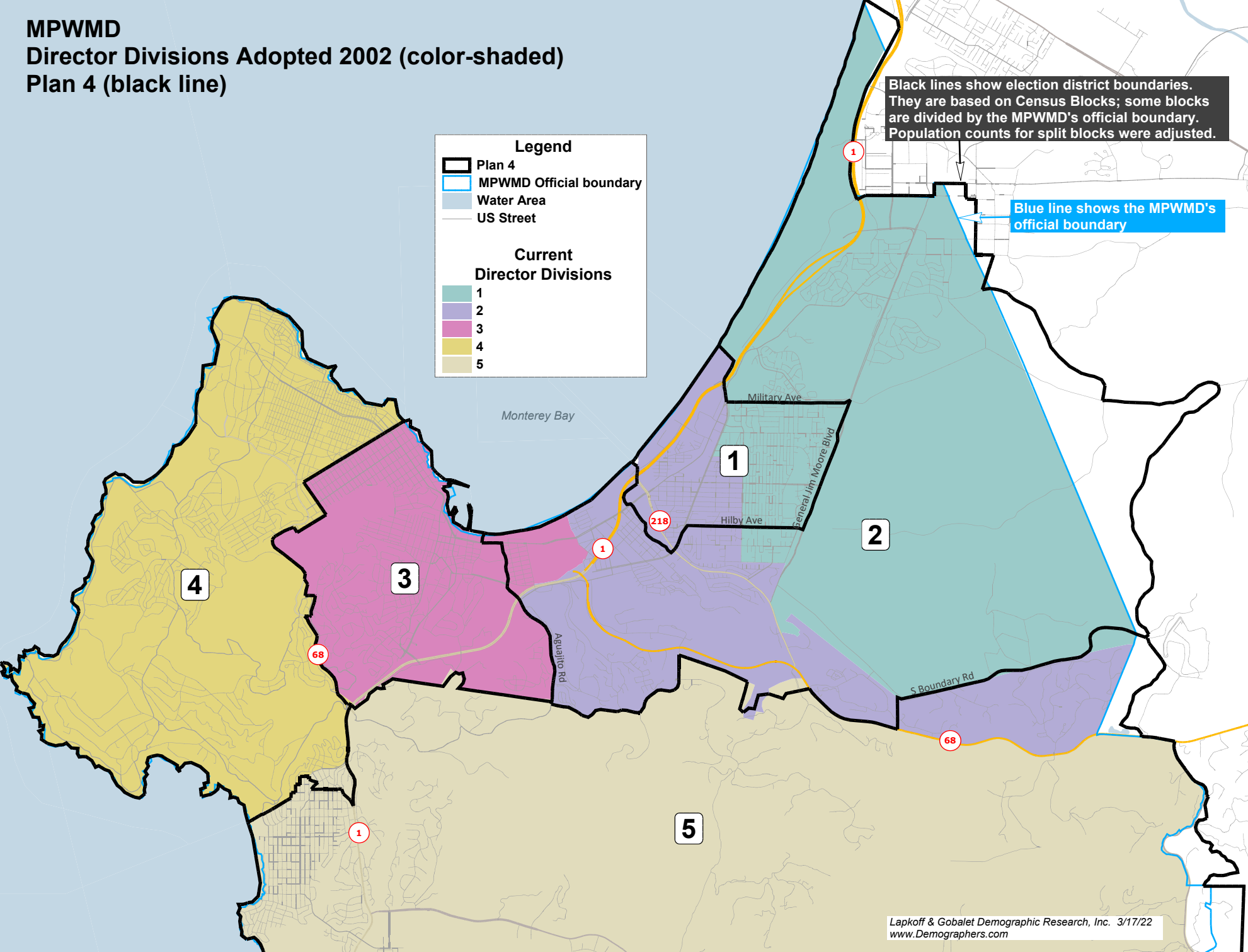
- Plan 4
- MPWMD Official boundary
- Water Area
- US Street

Current Director Divisions

- 1
- 2
- 3
- 4
- 5






Black lines show election district boundaries. They are based on Census Blocks; some blocks are divided by the MPWMD's official boundary. Population counts for split blocks were adjusted.

Blue line shows the MPWMD's official boundary







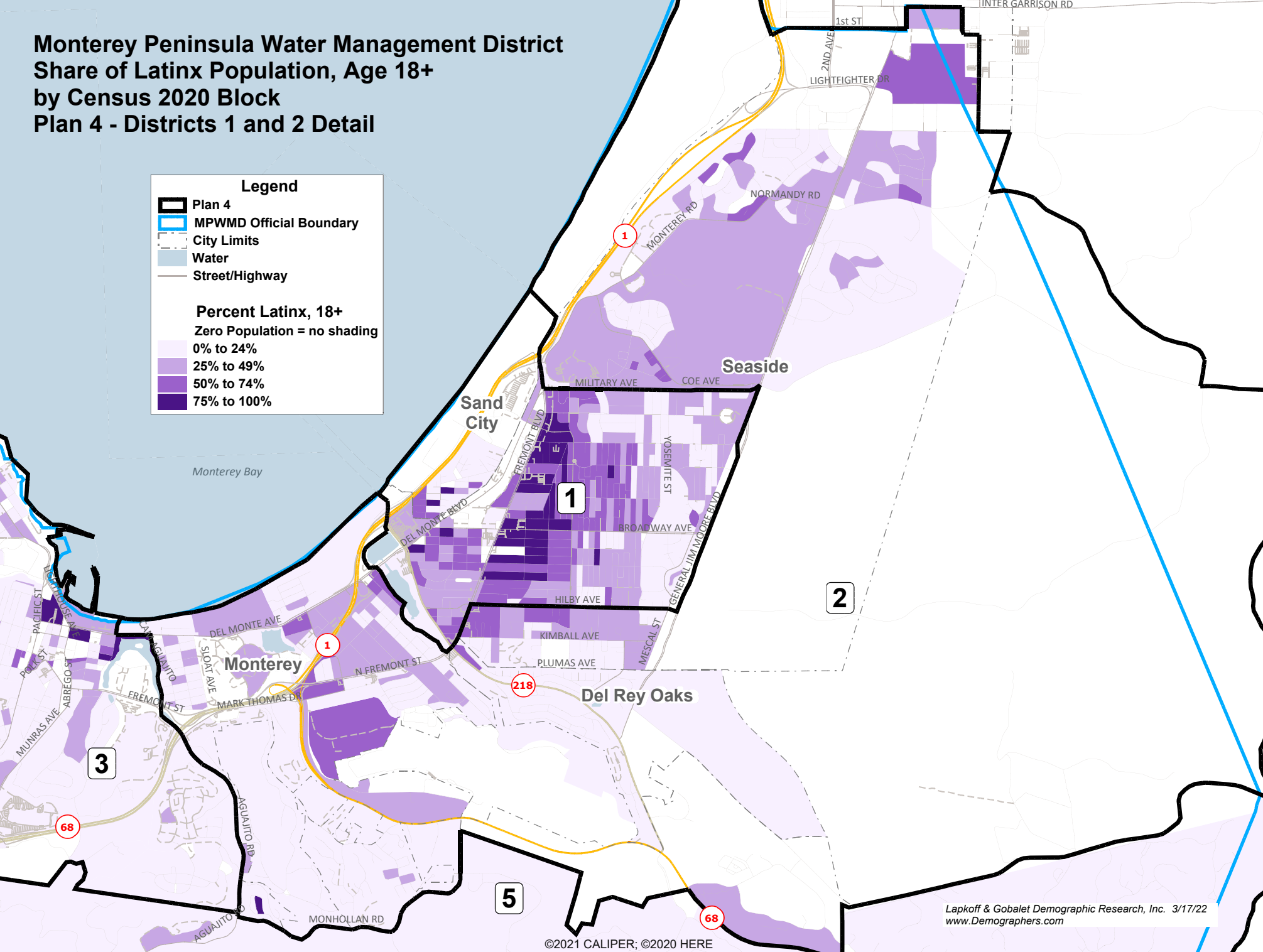
Monterey Peninsula Water Management District Share of Latinx Population, Age 18+ by Census 2020 Block Plan 4 - Districts 1 and 2 Detail

Legend

-  Plan 4
-  MPWMD Official Boundary
-  City Limits
-  Water
-  Street/Highway




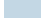

Percent Latinx, 18+
Zero Population = no shading

-  0% to 24%
-  25% to 49%
-  50% to 74%
-  75% to 100%

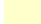




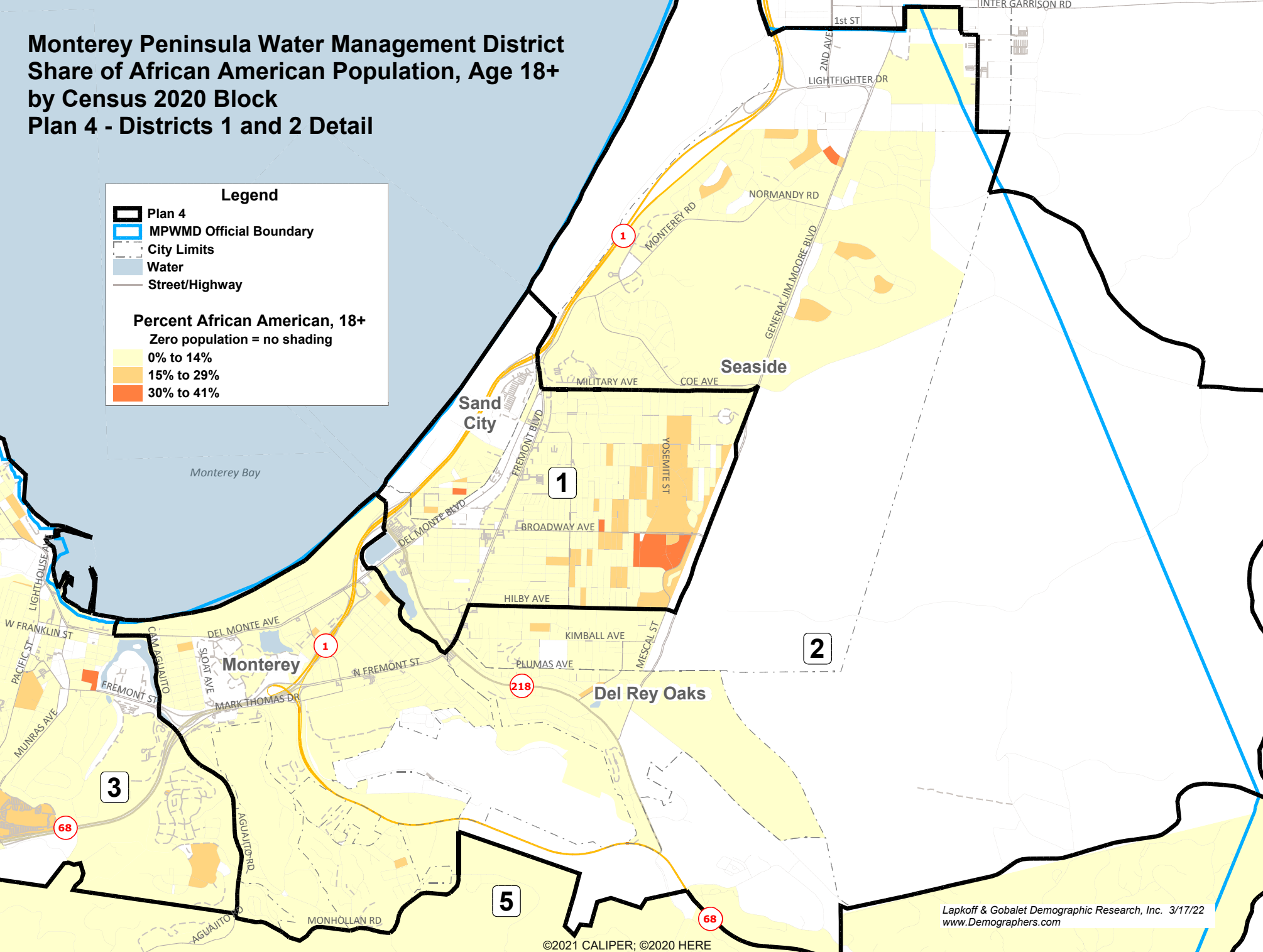
Monterey Peninsula Water Management District Share of African American Population, Age 18+ by Census 2020 Block Plan 4 - Districts 1 and 2 Detail

Legend

-  Plan 4
-  MPWMD Official Boundary
-  City Limits
-  Water
-  Street/Highway

**Percent African American, 18+
Zero population = no shading**

-  0% to 14%
-  15% to 29%
-  30% to 41%



MPWMD Plan 4

MPWMD Plan 4

District	Total Population	Latino/ Hispanic	Non-Hispanic				Total
			White	Black	Asian	Other	
Total Population Percentages							
1	21,398	56%	21%	7%	10%	5%	100%
2	22,125	28%	52%	4%	11%	6%	100%
3	21,161	15%	66%	4%	10%	4%	100%
4	20,488	12%	72%	2%	10%	4%	100%
5	20,739	9%	81%	1%	6%	4%	100%
Total	105,911	24%	58%	4%	9%	5%	100%

District	Total Population	Latino/ Hispanic	Non-Hispanic				Total
			White	Black	Asian	Other	
Age 18+ (Voting Age) Population Percentages							
1	16,451	50%	25%	8%	11%	5%	100%
2	17,661	25%	55%	4%	11%	5%	100%
3	18,676	14%	68%	4%	10%	4%	100%
4	16,981	10%	76%	2%	8%	4%	100%
5	17,768	7%	83%	1%	6%	3%	100%
Total	87,537	21%	62%	4%	9%	4%	100%

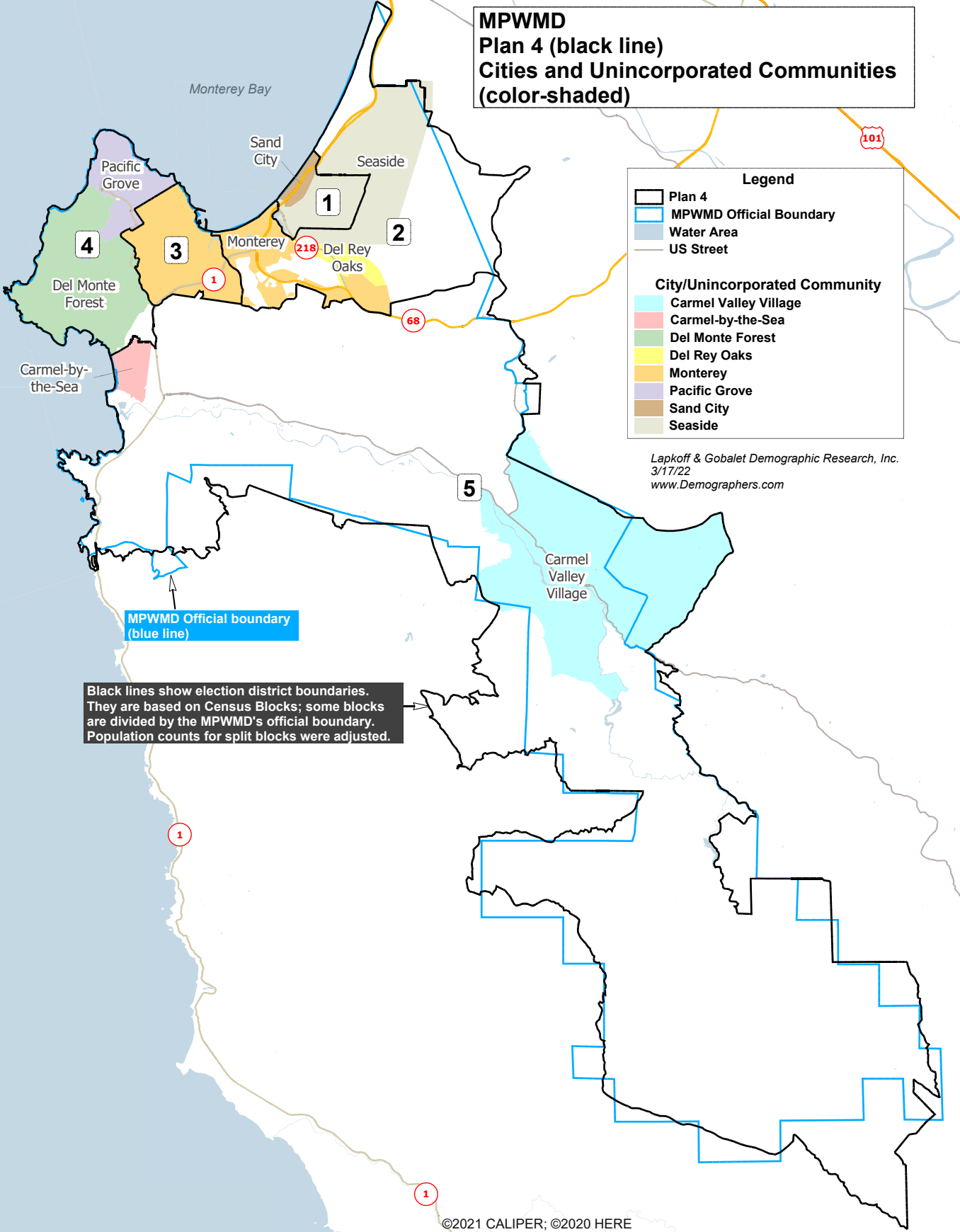
District	Total Population	Latino/ Hispanic	Non-Hispanic				Total
			White	Black	Asian	Other	
Citizens of Voting Age (CVAP) Percentages							
1	12,957	30%	34%	13%	14%	9%	100%
2	15,522	18%	62%	5%	9%	6%	100%
3	16,306	10%	72%	4%	8%	6%	100%
4	16,533	8%	79%	2%	6%	5%	100%
5	17,511	6%	86%	0%	4%	4%	100%
Total	78,829	13%	68%	4%	8%	6%	100%

District	Total Population	Latino/ Hispanic	Non-Hispanic			
			White	Black	Asian	Other
Registered Voters						
1	10,408	31%	n/a	n/a	8%	n/a
2	11,968	16%	n/a	n/a	6%	n/a
3	11,311	9%	n/a	n/a	6%	n/a
4	15,112	7%	n/a	n/a	4%	n/a
5	16,541	5%	n/a	n/a	4%	n/a
Total	65,340	12%	n/a	n/a	5%	n/a

District	Total Population	Latino/ Hispanic	Non-Hispanic			
			White	Black	Asian	Other
Actual Voters						
1	8,184	29%	n/a	n/a	8%	n/a
2	10,139	15%	n/a	n/a	6%	n/a
3	9,775	9%	n/a	n/a	5%	n/a
4	13,509	6%	n/a	n/a	4%	n/a
5	14,903	5%	n/a	n/a	4%	n/a
Total	56,510	11%	n/a	n/a	5%	n/a

District	Total Pop	Deviation	% Deviation
1	21,398	216	1.0%
2	22,125	943	4.5%
3	21,161	-21	-0.1%
4	20,488	-694	-3.3%
5	20,739	-443	-2.1%
Total	105,911		
Ideal	21,182	1,637	7.7%

**MPWMD
Plan 4 (black line)
Cities and Unincorporated Communities
(color-shaded)**



Legend

- Plan 4
- MPWMD Official Boundary
- Water Area
- US Street

City/Unincorporated Community

- Carmel Valley Village
- Carmel-by-the-Sea
- Del Monte Forest
- Del Rey Oaks
- Monterey
- Pacific Grove
- Sand City
- Seaside

Lapkoff & Gobalet Demographic Research, Inc.
3/17/22
www.Demographers.com

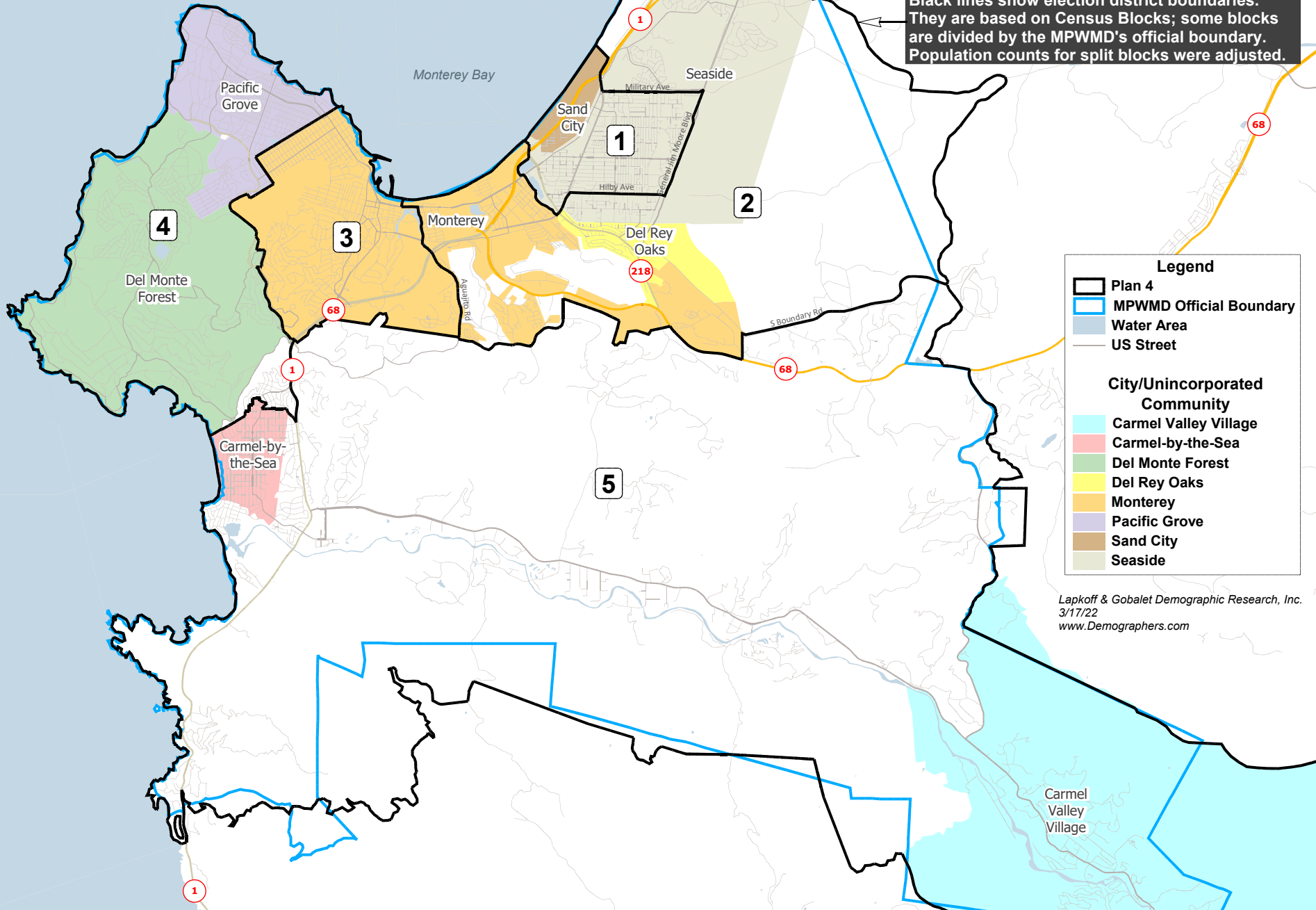
MPWMD Official boundary
(blue line)

Black lines show election district boundaries. They are based on Census Blocks; some blocks are divided by the MPWMD's official boundary. Population counts for split blocks were adjusted.

**MPWMD
 Cities and Unincorporated Communities (color-shaded)
 Plan 4 (black line)**

Blue line shows the MPWMD's official boundary

Black lines show election district boundaries. They are based on Census Blocks; some blocks are divided by the MPWMD's official boundary. Population counts for split blocks were adjusted.



Legend

- Plan 4
- MPWMD Official Boundary
- Water Area
- US Street

City/Unincorporated Community

- Carmel Valley Village
- Carmel-by-the-Sea
- Del Monte Forest
- Del Rey Oaks
- Monterey
- Pacific Grove
- Sand City
- Seaside

Lapkoff & Gobalet Demographic Research, Inc.
 3/17/22
www.Demographers.com

MPWMD Plan 4

MPWMD Plan 4

District	Total Population	Latino/ Hispanic	Non-Hispanic				Total
			White	Black	Asian	Other	
Total Population Percentages							
1	21,398	56%	21%	7%	10%	5%	100%
2	22,125	28%	52%	4%	11%	6%	100%
3	21,161	15%	66%	4%	10%	4%	100%
4	20,488	12%	72%	2%	10%	4%	100%
5	20,739	9%	81%	1%	6%	4%	100%
Total	105,911	24%	58%	4%	9%	5%	100%

District	Total Population	Latino/ Hispanic	Non-Hispanic				Total
			White	Black	Asian	Other	
Age 18+ (Voting Age) Population Percentages							
1	16,451	50%	25%	8%	11%	5%	100%
2	17,661	25%	55%	4%	11%	5%	100%
3	18,676	14%	68%	4%	10%	4%	100%
4	16,981	10%	76%	2%	8%	4%	100%
5	17,768	7%	83%	1%	6%	3%	100%
Total	87,537	21%	62%	4%	9%	4%	100%

District	Total Population	Latino/ Hispanic	Non-Hispanic				Total
			White	Black	Asian	Other	
Citizens of Voting Age (CVAP) Percentages							
1	12,957	30%	34%	13%	14%	9%	100%
2	15,522	18%	62%	5%	9%	6%	100%
3	16,306	10%	72%	4%	8%	6%	100%
4	16,533	8%	79%	2%	6%	5%	100%
5	17,511	6%	86%	0%	4%	4%	100%
Total	78,829	13%	68%	4%	8%	6%	100%

District	Total Population	Latino/ Hispanic	Non-Hispanic			
			White	Black	Asian	Other
Registered Voters						
1	10,408	31%	n/a	n/a	8%	n/a
2	11,968	16%	n/a	n/a	6%	n/a
3	11,311	9%	n/a	n/a	6%	n/a
4	15,112	7%	n/a	n/a	4%	n/a
5	16,541	5%	n/a	n/a	4%	n/a
Total	65,340	12%	n/a	n/a	5%	n/a

District	Total Population	Latino/ Hispanic	Non-Hispanic			
			White	Black	Asian	Other
Actual Voters						
1	8,184	29%	n/a	n/a	8%	n/a
2	10,139	15%	n/a	n/a	6%	n/a
3	9,775	9%	n/a	n/a	5%	n/a
4	13,509	6%	n/a	n/a	4%	n/a
5	14,903	5%	n/a	n/a	4%	n/a
Total	56,510	11%	n/a	n/a	5%	n/a

District	Total Pop	Deviation	% Deviation
1	21,398	216	1.0%
2	22,125	943	4.5%
3	21,161	-21	-0.1%
4	20,488	-694	-3.3%
5	20,739	-443	-2.1%
Total	105,911		
Ideal	21,182	1,637	7.7%